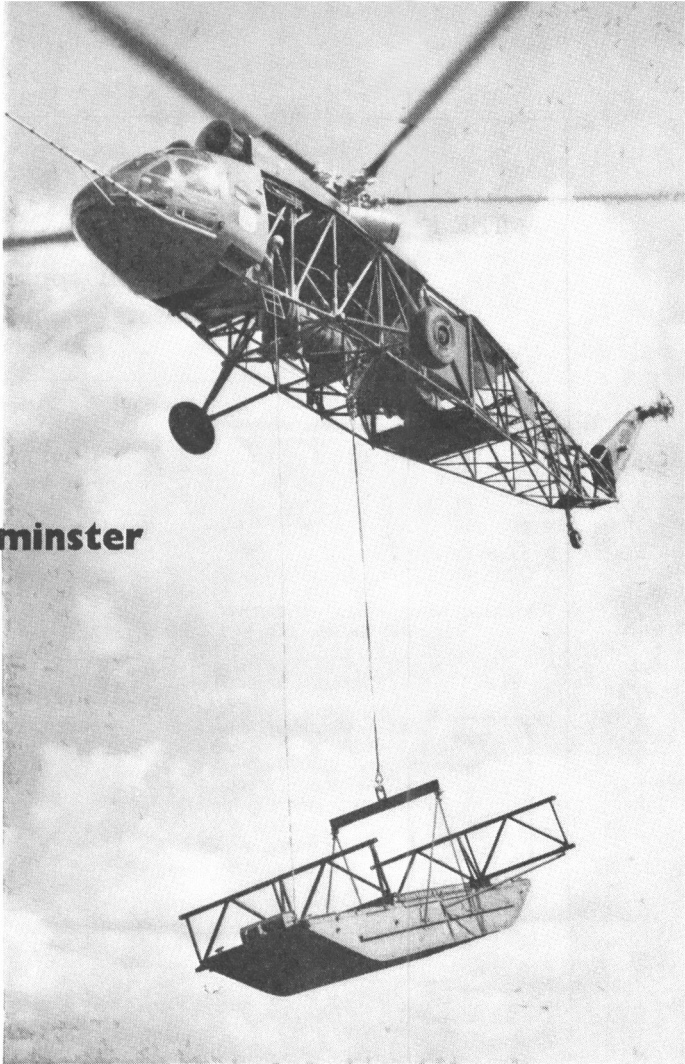


**Air mobility  
with the  
Westminster**



The Westminster is the largest conventional helicopter in the Western world

It has the ability to transport as many as 51 fully equipped troops and to convey mobile field units such as hospitals, food kitchens, living huts, vehicle servicing centres and operations rooms from supply bases to assault areas. It may also be used to recover unserviceable aircraft and ground vehicles and to transport complete missiles from storage units to firing sites.

All these capabilities meet the requirements of modern army, naval and air operations.

The Westminster is powered by two Napier Eland ' gas turbine engines and can operate with full payload on one of them if need be.

The picture shows a section of an assault floating bridge weighing 6736 lb being transported.

**WESTLAND**

*a great name in* **HELICOPTERS**

THE COUNCIL OF  
THE HELICOPTER ASSOCIATION OF GREAT BRITAIN

wish to record their appreciation  
of Advertisers' support

ALVIS LIMITED



HOLYHEAD ROAD COVENTRY  
Telephone Coventry 5501

*Pioneers of Rotating Wing Aircraft*



ELECTRO-HYDRAULICS LIMITED



Undercarriages  
Hydraulic  
Electro Hydraulic and  
Pneumatic Equipment

LIVERPOOL ROAD  
WARRINGTON

Telephone Warrington 2244

THE FAIREY AVIATION CO. LTD.



*Hordern-Richmond Ltd.*

MANUFACTURERS OF

Helicopter Rotor Blades

HYDULIGNUM WORKS HADDENHAM BUCKS  
TELEPHONE AYLESBURY 1100 1102



KELVIN & HUGHES (AVIATION) LTD.



NEW NORTH ROAD BARKINGSIDE ESSEX  
TEL HAINAULT 2601  
WINCHESTER ROAD BASINGSTOKE HANTS  
TEL BASINGSTOKE 690

ALL-BRITISH  
**Lockheed**  
MADE IN GREAT BRITAIN

AIRCRAFT EQUIPMENT

# Redifon

FLIGHT  
SIMULATOR  
DIVISION

CRAWLEY SUSSEX ENGLAND

COMPLETE  
ELECTRICAL SYSTEMS  
for AIRCRAFT by

# ROTAX



**SAUNDERS-ROE Helicopter Division**

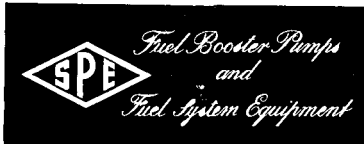
EASTLEIGH Southampton Phone Eastleigh 2731  
● Head Office OSBORNE EAST COWES ISLE OF WIGHT Phone COWES 2211



Symbols of service to  
Aviation  
throughout the years



SPE COMPANY LTD



SLOUGH BUCKS Tel SLOUGH 23277

THE SPERRY GYROSCOPE CO  
LTD



# SMITHS

SMITHS AIRCRAFT INSTRUMENTS LTD

STANDARD TELEPHONES & CABLES  
LIMITED

# Standard Radio

NEW SOUTHGATE LONDON N11  
Telephone Enterprise 1234



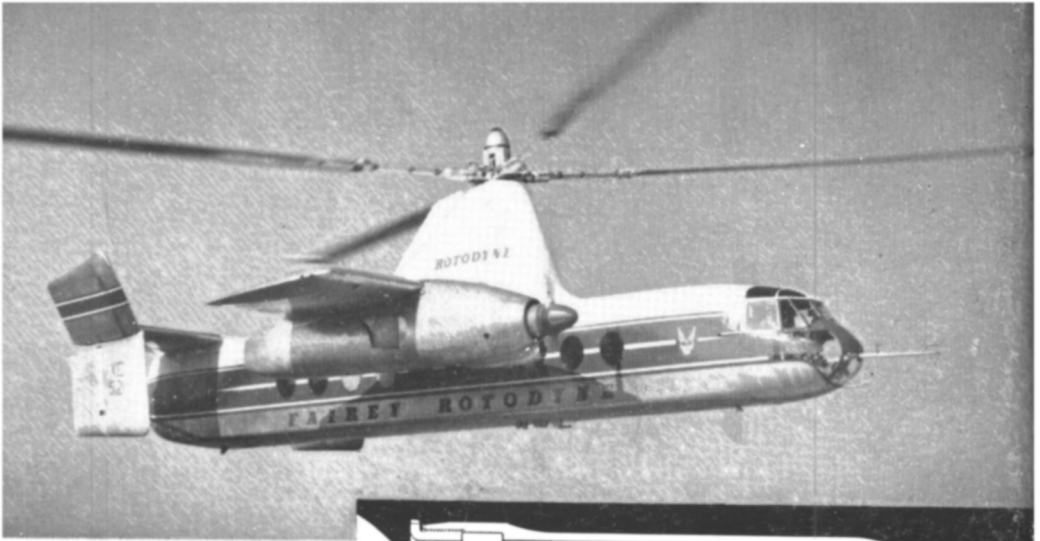
# WESTLAND

The Hallmark of British Helicopters

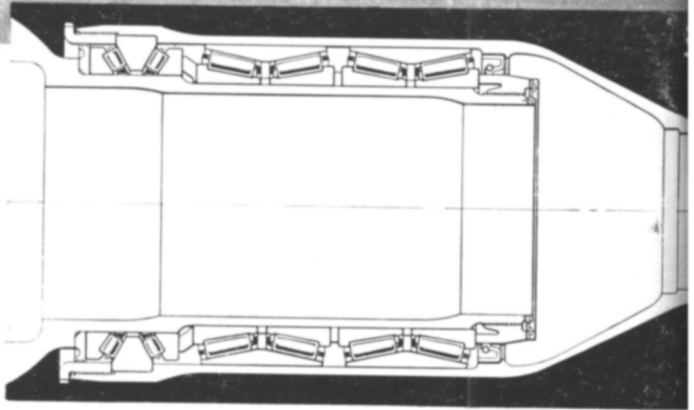
Westland Aircraft Limited Yeovil England



Published for The Helicopter Association of Great Britain Ltd by J M P PUBLISHING SERVICES at  
Effingham House, Arundel Street London, W C 2 Entered at Stationers Hall.



On the  
feathering  
hinges of the  
**FAIREY**  
Rotodyne



On this, the world's first vertical take-off airliner, Timken tapered-roller bearings are used in important situations

The sectional drawing shows the arrangement of the Timken bearings, journal and thrust, in the rotor-blade feathering hinges. Timken bearings are also used on the rotor head (where they carry the entire weight during vertical take-off and a considerable share during forward flight), and in the pitch control mechanism

The blade roots of the Rotor propellers also have Timken bearings, so have the main and nose wheels

**TIMKEN** Regd  
Trade  
Mark

TAPERED-ROLLER BEARINGS MADE IN ENGLAND BY

**BRITISH TIMKEN**  
LIMITED