
Microscopy AND Microanalysis

VOLUME 16, 2010

**AUTHOR INDEX
SUBJECT/KEYWORD INDEX**



Microscopy AND Microanalysis

An International Journal for the Biological and Physical Sciences

THE OFFICIAL JOURNAL OF

MICROSCOPY SOCIETY OF AMERICA
MICROBEAM ANALYSIS SOCIETY
MICROSCOPICAL SOCIETY OF CANADA /
SOCIÉTÉ DE MICROSCOPIE DU CANADA
MEXICAN MICROSCOPY SOCIETY
BRAZILIAN SOCIETY FOR MICROSCOPY AND MICROANALYSIS
VENEZUELAN SOCIETY OF ELECTRON MICROSCOPY
EUROPEAN MICROBEAM ANALYSIS SOCIETY
AUSTRALIAN MICROSCOPY AND MICROANALYSIS SOCIETY
PORTUGUESE SOCIETY FOR MICROSCOPY

PUBLISHED IN AFFILIATION WITH

ROYAL MICROSCOPICAL SOCIETY
GERMAN SOCIETY FOR ELECTRON MICROSCOPY
BELGIAN SOCIETY FOR MICROSCOPY
MICROSCOPY SOCIETY OF SOUTHERN AFRICA

Editor in Chief

Editor, Biological Applications

Robert L. Price
Department of Cell and Developmental
Biology and Anatomy
School of Medicine
University of South Carolina
6439 Garner's Ferry Road, Bldg. 1 B-60
Columbia, SC 29209
Phone: (803) 733-3392
Fax: (803) 733-3212
e-mail: Bob.Price@uscmed.sc.edu

Editor, Materials Applications

David J. Smith
Department of Physics
School of Materials
Arizona State University
Tempe, Arizona 85287-1504
Phone: (480) 965-4540
Fax: (480) 965-9004
e-mail: david.smith@asu.edu

Editor, Materials Applications

Elizabeth Dickey
Materials Science and Engineering
Pennsylvania State University
223 MRL Building
University Park, PA 16802-7003
Phone: (814) 865-9067
Fax: (814) 863-8561
e-mail: ecd10@psu.edu

Editor, Light and Scanning Probe Microscopies

Brian Herman
Cellular and Structural Biology
University of Texas at San Antonio
7703 Floyd Curl Drive
San Antonio, Texas 78284-7762
Phone: (210) 567-3800
Fax: (210) 567-3803
e-mail: hermanb@uthsca.edu

Editor, Biological Applications

Heide Schatten
Veterinary Pathobiology
University of Missouri-Columbia
1600 E. Rollins Street
Columbia, Missouri 65211-5030
Phone: (573) 882-2396
Fax: (573) 884-5414
e-mail: schattenh@missouri.edu

Editor, Microanalysis

John Mansfield
Electron Microbeam Analysis Lab
North Campus, 417 SRB
University of Michigan
2455 Hayward
Ann Arbor, MI 48109-2143
Phone: (734) 936-3352
Fax: (734) 763-2282
e-mail: jfmjfm@umich.edu

Special Issues and Reviews Editor

Jay Jerome
Vanderbilt University Medical Center
Nashville, TN 37232
e-mail: jay.jerome@vanderbilt.edu

Book Review Editor

Cynthia S. Goldsmith
Centers for Disease Control
Atlanta, GA 30333
e-mail: csg1@cdc.gov

Calendar Editor

Nan Yao
Princeton University
Princeton, NJ 08540
e-mail: nyao@Princeton.edu

Expo Editor

Richard E. Edelmans
Miami University
Oxford, OH 45056
e-mail: edelmare@muohio.edu

Proceedings Editor

John Shields
University of Georgia
Athens, GA 30602
e-mail: jpshield@uga.edu

AUTHOR INDEX TO VOLUME 16

- A**
Agnely, Florence, 764
Agnew, Sean R., 831
Albrecht, Ralph M., 33
Allard, Lawrence F., 375, 425
Allen-Hoffmann, B. Lynn, 117
Almeida, Eduardo, 327
Almeida, Henrique, 661
Alwood, Joshua S., 327
Amaral, A.L., 166, 561
Anantharamaiah, N., 282
Andrews, Joy C., 327
Anusavice, Kenneth, 531
Aoki, Toshihiro, 183
Attenborough, Karen, 291
Aubert, Pascal, 764
Aymes-Chodur, Caroline, 764
- B**
Baddeley, David, 64
Bals, Sara, 210
Barlow, Andrew L., 710
Batchelor, A.D., 282
Batista, Marcia R., 337
Baudino, Troy A., 73
Baylou, Pierre, 273
Bedenbaugh, Adam, 73
Beil, Michael, 462
Bell, David C., 386
Bello, Valentina, 456
Bender, Hugo, 210
Benner, Gerd, 386
Bernas, Tytus, 550
Bhethanabotla, Venkat R., 725
Blanc, Rémi, 273
Blavette, D., 643
Bloebaum, Roy D., 143
Boriga, Radu, 515
Borsella, Elisabetta, 456
Botton, Gianluigi A., 416
Bouttier, Sylvie, 764
Brewer, Luke N., 259
Brunelle, A., 91
Burdiková, Zuzana, 735
Burdin, Steve, 183
- C**
Calado, Gonçalo, 688
Campbell, Helen, 821
Cannell, Mark B., 64
Čapek, Martin, 735
Carragher, Bridget, 43
Carrara, Márcia A., 337
Carreras, Alejo C., 583
Charlet, Karine, 175
Chen, Jie, 327
Chen, Xiaojun, 488
Chiu, Tai-Yu, 313
Chobpattana, Varistha, 183
Chowdhury, Sanchari, 725
Cirillo, John, 239
Clarke, Samuel, 153
Coelho, Rita, 688
Consolaro, Márcia E.L., 337
Cordeiro, Ana Lúcia, 699
Corrias, Anna, 200
Costa, Sônia Soares, 576
Cott, Daire, 210
Cotte, M., 91
Craciunescu, Oana, 137
Cuif, J.P., 91
- D**
Da Costa, Jean-Pierre, 273
Dahmen, Uli, 365
Damke, Edilson, 337
da Silva, Marcos Aurélio Bomfim, 779
da Silva Júnior, José Ginaldo, 779
Dauphin, Y., 91
Davis, Ryan W., 478
Davis, Timothy J., 13
de Almeida, Henrique, 699
De Geuser, Frederic, 99
De Hosson, Jeff T.M., 291
de Jonge, Niels, 54, 622, 795
Demers, H., 795
Dhara, Sujoy K., 80
Dias, O., 166, 561
Diebold, Alain C., 194
Ding, Yi, 488
Dodla, Mahesh C., 80
Domenges, Bernadette, 175
Donatti, Lucélia, 337, 537
dos Reis, José Ivo Limeira, 779
Dravid, Vinayak P., 300
Dries, Manuel, 785
Drouin, D., 795
Duerstock, Bradley S., 239
Dvorak, Ann M., 653
- E**
Elias, R.A.V., 561
Eliceiri, Kevin W., 117
Elmore, Susan A., 502
Etcheberry, Arnaud, 764
- F**
Falqui, Andrea, 200
Farias Paiva, Luciene C., 537
Farre, B., 91
Fernandes, M.H., 670
Ferreira, E.C., 166, 561
Ferreira, Íris, 688
Ferreira, P.J., 614
Ferrell, N., 670
Feser, Michael, 327
Figueiredo, António, 699
Flytzani-Stephanopoulos, Maria, 375
Franquinho, Filipa, 677
Frindt, Nicole, 785
Froese, Duane G., 218
Fu, Ying-Hsien, 755
Fuseler, John W., 73
- G**
Gallego-Perez, D., 670
Gamm, Bjoern, 785
Ganesh, K.J., 614
Gasco, Paolo, 456
Gault, Baptiste, 99
Gauvin, Raynald, 821
Geiger, Dorin, 434
Gelb, Jeff, 327
Germain, Christian, 273
Gerthsen, Dagmar, 604, 785
Gill, Erin M., 117
Giuliani, Alexandre, 507
Glenn, A. Matthew, 13
Gmur, Aleksander, 550
Gorustovich, Alejandro A., 132
Gravesteijn, Dirk J., 291
Griffin, Brendan, 599
Griffis, D.P., 282
Gruber, Maria, 643
Guérin, Christopher J., 710
Gunawan, Lina, 416
Gunther, Luciene S.A., 337
Gupta, Vipul K., 831
Gwynn, Iolo ap, 358
- H**
Haider, M., 393
Haigh, Sarah J., 409
Haley, Daniel, 99
Hansford, D., 670
Hanson, Hugo H., 747
Hantschel, Thomas, 210
Hartel, P., 393
Hashimoto, Ayako, 233
Haslauer, C.M., 282
Heckman, Carol A., 472
Hill, Raymond, 599
Höhn, Katharina, 462
Holden, Patricia, 153
Horný, Paula, 821
Hristu, Radu, 515
Hu, D.Z., 604
Hu, Yaojun, 488
Huang, Ping-Chun, 313
Hughes, Anthony E., 13
Hull, Robert, 194
- I**
Idee, Jean Marc, 456
Irie, Mary M.T., 337
- J**
Jamme, Frederic, 507
Janssen, William G., 747
Jones, Howland D.T., 478
Joy, David, 599
- K**
Kaiser, Julia N., 478
Kao, Fu-Jen, 313
Karcz, Jagna, 550
Kawasaki, M., 614
Ke, Xiaoxing, 210
Keenan, Michael R., 810
Kirkland, Angus I., 409
Klinedinst, Donna, 1
Knowles, W. Ralph, 805
Kooi, Bart J., 291
Kubínová, Lucie, 735
Kuehn, Stephen C., 218
- L**
La Fontaine, Alex, 99
Lagarde, Bruno, 507
Lage, Celso Luiz Salgueiro, 576
Lai, Hsin-Chih, 755
Lane, Todd W., 478
Laprévôt, O., 91
Lau, Deborah, 13
Lazar, Sorin, 416
Leal-Costa, Marcos Vinicius, 576
Lee, Chialing, 327
Lee, Rebecca, 747
Lee, Shih-Yuan, 755
Lehmann, Michael, 434

Lei, Changhui, 183
 Leigh, Stefan D., 1
 Lichte, Hannes, 434
 Lifshin, Eric, 821
 Liliensiek, Sara J., 117
 Limandri, Silvina P., 583
 Lin, Chih-Chen, 755
 Lin, Shiming, 755
 Linck, Martin, 434
 Liu, Chih-Hao, 755
 Liu, Jingyue, 425
 Liu, Shunan, 488
 Liu, Yijin, 327
 Llovet, Xavier, 21
 Lobo-da-Cunha, Alexandre, 677, 688
 Lopes-Consolaro, Márcia E., 537
 Loyola-Rodríguez, Juan P., 531
 Lück, Sebastian, 462

M

Mabon, James, 183
 Machač, Jiří, 735
 Machacek, Dave, 80
 MacLeod, Alasdair, 710
 Malhão, Fernanda, 677
 Marinenko, Ryna B., 1
 Marko, Michael, 366
 Martínez-Castanon, Gabriel A., 531
 Massover, William H., 346
 Masters, Barry R., 226
 Mattei, Giovanni, 456
 Mazzoldi, Paolo, 456
 McVey, Sean M., 599
 Meibom, A., 91
 Meier, Douglas C., 1
 Meirer, Florian, 327
 Melo, Rossana C.N., 653
 Merlet, Claude, 21
 Mesquita, D.P., 166, 561
 Meyer, Daryl A., 33
 Mielke, Randall E., 153
 Mishina, Satoshi, 183
 Mitchell, Edward A.D., 735
 Mitsuishi, Kazutaka, 233
 Moldovan, Lucia, 137
 Monteiro, F.J., 670
 Monteiro, Rogério A.F., 677
 Moody, Michael P., 99
 Moran, Ken, 594
 Moreira, Nattacha dos Santos, 576
 Mountjoy, Gavin, 200
 Mrad, Omar, 764
 Muller, David A., 445
 Müller, E., 604
 Müller, H., 393
 Mumaw, Jennifer L., 80
 Muster, Tim H., 13

N

Nadeau, Jay L., 153
 Nascimento, Luana Beatriz dos Santos, 576

Neal, Andrea, 153
 Nechache, Riad, 416
 Nelson, Florence, 194
 Neves, Delminda, 699
 Newbury, Dale E., 1
 Nizami, Zehra F., 649
 Noppen, Samuel, 710
 Northan, Brian M., 54
 Notte, John, IV, 599
 Nowak, Agnieszka, 550

O

Oliveira, Elsa, 688
 Oliveira, Guilherme José Pimentel Lopes de, 779
 Oliver, Julie A., 33
 Oosthoek, Jasper L.M., 291
 Ostašov, Pavel, 735
 Overbury, Steven H., 375

P

Pan, Lei, 488
 Parish, Chad M., 259
 Patiño-Marín, Nuria, 531
 Patussi, Eliana V., 337, 537
 Paul, Rick L., 1
 Pelaez-Vargas, A., 670
 Pelc, Radek, 735
 Pennycook, Stephen J., 54, 111
 Pereira, Helena, 569
 Petrov, Ivan, 183
 Philippe, Thomas, 643
 Phillips, Greg R., 747
 Phillips, Matthew R., 594
 Pianetta, Piero, 327
 Pignolet, Alain, 416
 Poirier-Demers, N., 795
 Potter, Clinton S., 43
 Pourdeyhimi, B., 282

R

Rabb, Savelas A., 1
 Rajwa, Bartek, 239
 Ramachandra, Ranjan, 599
 Ramanujam, Nirmala, 117
 Ramos, A.S., 662
 Ran, Ke, 183
 Rasmussen, Cathy A., 117
 Réfrégiers, Matthieu, 507
 Reilly, James E., 747
 Reinert, Fernanda, 576
 Resende, Albina D., 677
 Richter, Lee J., 1
 Ring, Elisabeth A., 622
 Ringer, Simon P., 99
 Ritchie, Nicholas W.M., 1, 248
 Robic, Caroline, 456
 Rocha, Eduardo, 677
 Rose, Harald, 366
 Rosilio, Véronique, 764
 Rouam, Valerie, 507
 Rudati, Juana, 327
 Russo, Christopher J., 386

S

Sailer, Michaela, 462
 Salomé, M., 91
 Sammann, Ernie, 183
 Sanchez, Susana A., 842
 Sanderson, Jeremy, 710
 Santos, Lucineide de Melo, 779
 Saunier, Johanna, 764
 Sawada, Hidetaka, 409
 Schaadt, D.M., 604
 Schmidt, Volker, 462
 Schröder, Rasmus R., 785
 Schulteiss, Katrin, 785
 Scott, Keana C.K., 1
 Sen, Rajan, 725
 Shah, Amish B., 183
 Shao, Yang, 416
 Sheu, Bor-Ching, 755
 Shields, John P., 80
 Shimojo, Masayuki, 233
 Simões, S., 662
 Simons, David S., 1
 Sinclair, Michael B., 478
 Small, John A., 1
 Smith, David J., 365
 Snoeck, Etienne, 200
 Soeller, Christian, 64
 Sougrat, Rachid, 54
 Stanciu, George A., 515
 Stanciu, Stefan G., 515
 Stephenson, Leigh T., 99
 Sterbinsky, George E., 300
 Stice, Steve L., 80
 Stork, Christopher L., 810
 Storti-Filho, Agenor, 337
 Straseski, Joely A., 117
 Sundararajan, Sriram, 636
 Svidzinski, Terezinha I.E., 337, 537
 Swatland, Howard J., 306

T

Takayanagi, Kunio, 409
 Takeguchi, Masaki, 233
 Tavares, Eliana Schwartz, 576
 Teixeira, Rita Teresa, 569
 Teng, Hsiao-Chuan, 313
 Terrones, Humberto, 531
 Thiel, Bradley L., 805
 Thomas, Paul, 594
 Timlin, Jerilyn A., 478
 Tkachuk, Andrei, 327
 Tomada, Inês, 699
 Tonholo, Josealdo, 779
 Toth, Milos, 805
 Tourek, Christopher J., 636
 Trincavelli, Jorge C., 583
 Tsai, Jui-Chang, 755
 Turner, Shirley, 1
 Typke, Dieter, 441

U

Uhlemann, S., 393
 Uppal, Sonal O., 472

V

van der Meulen, Marjolein C.H., 327
 Van Tendeloo, Gustaaf, 210
 Viana, F., 662
 Vieira, M.F., 662
 Santos, Lucineide de Melo, 779
 Saunier, Johanna, 764
 Vigneron, Jacky, 764
 Villette, Sandrine, 507
 Vivenza, Nicoletta, 456
 Volkenandt, T., 604
 Voronine, Dmitri V., 472
 Vurpillot, François, 643

W

Walther, Paul, 462
 Wang, Fei, 630
 Wang, Li-Chun, 313
 Wang, Peng, 200
 Wang, Yue-Yu, 630
 Weller, Peter F., 653
 Wen, Jianguo, 183
 Wendt, Elizabeth, 472
 Wessels, Bruce W., 300
 White, John G., 117
 White, Rachel, 594
 Wien, Frank, 507
 Williams, C.T., 91
 Williams, Dustin L., 143
 Winchester, Michael R., 1
 Wolters, Rob A.M., 291
 Wong, K.C., 282
 Woznica, Andrzej, 550
 Wu, Qiongshui, 488
 Wu, Rung-Shin, 755
 Wuhler, Richard, 594

X

Xie, Sujing, 300
 Xin, Huolin L., 445

Y

Yagoubi, Najet, 764
 Yang, De-Ming, 313
 Yekkala, Krishna, 73
 Yoshioka, Craig, 43
 Yu, Lee L., 1
 Yun, Wenbing, 327

Z

Zach, Joachim, 393, 785
 Zarnescu, Otilia, 137
 Zavala-Alonso, Verónica, 531
 Zeisler, Rolf L., 1
 Zhang, Jiong, 183
 Zhao, Xue-Zeng, 630
 Zhou, Fa-Quan, 630
 Zhou, J.P., 614
 Zuo, Jian-Min, 183

SUBJECT/KEYWORD INDEX TO VOLUME 16

- A**
- Aberration-corrected electron microscopy, 445
 - Aberration-corrected scanning transmission electron microscopy, 183
 - Aberration-corrected STEM, 54
 - Aberration-corrected STEM imaging, 375
 - Aberration-corrected STEM of nanostructures, 425
 - Aberration-corrected TEM, 386
 - Aberration correction, 194, 366, 375, 409, 416, 434
 - Aberration corrector, 393
 - Aberration-free electron microscope, 425
 - Accurate calculation of Pearson's correlation coefficient, 710
 - Actin, 462
 - Activated sludge, 166, 561
 - Activated sludge morphological characterization, 166
 - Additives, 764
 - ADF-STEM, 445
 - ADF-STEM, 445
 - Adhesion, 537
 - Adhesion *in vivo*, 337
 - Affine detectors, 515
 - AFM, 91, 531, 670, 764
 - Aggregates, 166, 561
 - Aging, 699
 - Algorithm, 710
 - Algorithm to eliminate ambiguities in EBSD orientation mapping, 831
 - Amorphous-crystalline interface, 291
 - Amorphous dried sodium phosphate buffer, 346
 - Amorphous thin films, 13
 - Ang1, Ang2, and Tie2 in the corpus cavernosum of the rat during aging, 699
 - Angiogenesis, 73, 699
 - Angiopoietins, 699
 - Annular bright field, 416
 - Annular dark-field (ADF) detector, 795
 - Annular dark-field imaging, 233
 - Apc^{Min/+}* mice, 73
 - Aperture nanobeam diffraction, 183
 - Aperture synthesis, 409
 - Artist's pigments, 594
 - As-deposited and annealed Ni/Al multilayer thin film, 662
 - Assessing the complex surface of polyurethane catheters, 764
 - Atomic force microscope (AFM), 630, 636
 - Atomic force microscopy (AFM), 755, 779
 - Atomic resolution, 366, 434
 - Atom probe microscope, 636
 - Atom probe tomography, 99, 643
 - Au catalysts, 375
 - Autofluorescence, 478, 507
 - Automated TEM image analysis, 291
 - Automatic biodetector for water toxicity, 550
 - Autophagosome, 747
- B**
- Bacteria, 153
 - Bacterial adhesion, 764
 - Bacterial and mineral elements in an arctic biofilm, 153
 - Beam-induced movement, 43
 - Behavior of Au species in Au/Fe₂O₃ catalysts, 375
 - BF-STEM, 445
 - Biaxial cross section, 282
 - Bicomponent polymer fiber, 282
 - Bioactive glass, 132
 - Bioengineered skin, 117
 - Biofilm, 143, 153, 550
 - Biofilm matrix of *Staphylococcus epidermidis* ATCC 35984, 143
 - Biological electron microscopy, 54
 - Biominalization, 91
 - Blanket layer, 291
 - Blind scan region, 630
 - Blooming, 764
 - Blue light, 576
 - Bone mineral density, 327
 - Bone ultrastructure, 327
 - Bright field, 166
 - Bright field and phase-contrast image analysis techniques, 166
 - Brown trout (*Salmo trutta f. fario*) trunk kidney, 677
 - Bubbles, 346
- C**
- Cadmium yellow, 594
 - Cancer, 472
 - Candida albicans*, 337
 - Carbon coating, 583
 - Carbon deposition, 13
 - Carbon nanotubes, 210
 - Caveolin, 64
 - CDC biofilm reactor, 143
 - Cell adhesion and proliferation, 670
 - Cell secretion, 653
 - Cell shape, 472
 - Cellular biophysics, 507
 - Cellulose, 175
 - Cell wall, 175, 569
 - Channeling, 425
 - Characterization, 282
 - Characterization of SiGe films, 1
 - Characterization of the near apex region of an AFM tip, 636
 - Charging, 43
 - Chondroitin sulphate, 137
 - Chromatic aberration, 393
 - Chronic ischemia in bioengineered human skin, 117
 - Clathrin-coated pit, 54
 - CLSM, 550
 - Clustering, 643, 810
 - CoFe₂O₄, 200
 - Collagen, 137
 - Collagen-chondroitin sulphate-hydroxyapatite porous composites, 137
 - Colloidal gold, 33
 - Colloidal palladium, 33
 - Colloidal palladium particles for electron microscopy labeling, 33
 - Colocalization, 710
 - Colocalization analysis in fluorescence micrographs, 710
 - Combinations of microtubule-polymerizing and -depolymerizing agents, 472
 - Comparison between positive and negative staining, 456
 - Composite, 137
 - Composite resin, 779
 - Computer program XFILM, 21
 - Confocal microscopy, 735
 - Confocal scanning laser microscopy (CSLM), 515
 - Contact angle measurement, 764
 - Contrast transfer function, 366
 - Contributions of Otto Scherzer (1909–1982) to the electron microscope, 366
 - Core loss EELS mapping, 416
 - Cork, 569
 - Cork oak differ from other species, 569
 - Corpus cavernosum, 699
 - Correlative light and electron microscopy, 747
 - Crassulaceae, 576
 - Cryo-electron microscopy, 43
 - Cryomesh™, 43
 - Crystallization, 291
 - Crystal symmetry, 831
 - CSLM imaging of vaginal *Candida albicans* and non-*albicans* species, 537
 - Cytochemistry, 688
 - Cytokines, 653
 - Cytoskeleton, 54

- D**
- Deconvolution, 54
 - Dental curing light, 779
 - Dental marginal adaptation, 779
 - Dental surface analysis, 779
 - Depth sectioning, 375, 445
 - Detection of low levels of fluorescence in auto-fluorescent background, 478
 - Development, 80
 - Didymodon tophaceus*, 306
 - Differential sputtering, 282
 - Diffraction imaging in a He⁺ ion beam, 599
 - Diffusion model, 725
 - Digestive tract, 688
 - Digital video camera, 239
 - Dilution, 561
 - Dilution and magnification effects on image analysis, 561
 - Direct insights on flax fiber structure, 175
 - Discoloration, 594
 - Dislocation, 300
 - Doped SbTe, 291
 - Doped SbTe phase-change thin films, 291
 - DTSA-II, 248
- E**
- Ecophysiology, 735
 - EDS, 259
 - EDX, 200
 - EELS, 200
 - EELS mapping in aberration-corrected STEM, 416
 - Effects of a new plasma decontamination treatment, 764
 - Electron-beam-induced carbon contamination on silicon, 13
 - Electron beam-induced radiation damage, 346
 - Electron diffraction technique applied to nanomaterials, 614
 - Electron energy loss, 386
 - Electron energy loss spectroscopy, 183
 - Electron holography, 434
 - Electron microscope, 425
 - Electron microscope development, 366
 - Electron microscopy (EM), 13, 33, 153, 409, 462, 622
 - Electron optical theory, 366
 - Electron probe microanalysis, 1, 218, 583
 - Electron probe microanalysis of thin films, 21
 - Electron tomography, 210, 653
 - Electrostatic phase plate, 785
 - Electrostatic phase plate for phase-contrast TEM, 785
 - Embryonic stem cells, 80
 - Energy dispersive spectra from particles, 248
 - Energy dispersive X-ray spectroscopy, 810
 - Environmental scanning electron microscopy (SEM), 735, 805
 - Eosinophils, 653
 - Epithelial cells, 688
 - EPMA, 1, 21, 91
 - Erectile dysfunction, 699
 - Error, 630
 - ESEM, 153
 - Estimation of volume phase fraction, 273
 - Exit-wave reconstruction, 409
 - Exothermic reaction, 662
- F**
- Factor analysis, 810
 - Fatigue crack-tips/wakes in aluminum alloys, 831
 - Feedback, 805
 - Ferrite, 200
 - Ferroelectricity, 300
 - Ferromagnetism, 300
 - FIB, 210
 - Field emission scanning electron microscope, 821
 - Filaments, 166, 561
 - Fine particle analysis, 218
 - Fixation, 143
 - Flax, 175
 - Fluorescence, 64, 507
 - Fluorescence and electron microscopy, 153
 - Fluorescence imaging, 478
 - Fluorescence lifetime imaging microscopy (FLIM), 313
 - Fluorescence microscopy, 710
 - Fluorescence resonance energy transfer (FRET), 313
 - Fluorescent proteins, 478
 - Fluorotic enamel, 531
 - Focused ion beam, 282, 662
 - Focused ion beam on bicomponent polymer fibers, 282
 - Focused ion beam microscopy, 175
 - Foil lens, 441
 - Fractal analysis, 73, 472
 - Francisella*, 478
 - Francisella*-infected macrophage cells, 478
 - FTIR, 91
 - Functional coupling of Orail-STIM1, 313
- G**
- Gas cascade amplification, 805
 - Gastropoda, 688
 - Genital epithelium, 337
 - Gram negative, 153
 - Graphene, 194
 - Green fluorescent proteins (GFPs), 313, 747
 - Gridded glass-bottom imaging dishes, 747
 - Grid substrates, 43
 - Growth rate, 291
- H**
- HAADF, 375, 416, 425
 - HAADF-STEM, 194
 - Healthy and fluorotic enamel by AFM, 531
 - Healthy enamel, 531
 - Helium ion beams, 599
 - Heterogeneity, 1
 - High-angle annular dark-field imaging, 183
 - High resolution, 409
 - High-resolution TEM using tilted illumination and exit-wave restoration, 409
 - Histochemistry, 137
 - Histological and stereological characterization of brown trout, 677
 - HREM, 200
 - HRTEM, 194
 - HRTEM imaging of few-layer-graphene stacking, 194
 - Human, 80
 - Human embryonic stem cells at the ultrastructural level, 80
 - Hydroxyapatite, 137
 - Hyperspectral imaging, 810
 - Hypoxia, 117
- I**
- Ice core tephrochronology, 218
 - Image, 537
 - Image acquisition, 239
 - Image analysis, 73, 166, 561
 - Image modifications specific to CSLM, 515
 - Image processing, 291
 - Image processing visualization, 550
 - Imaging, 327
 - Imaging bone-bioactive glass interface by SEM, 132
 - Immune system, 653
 - Immunohistochemistry, 137
 - Inflammation, 653
 - Influence of blue light on leaf morphoanatomy, 576
 - Information limit, 393
 - InGaAs heterostructures, 604
 - In situ*, 375
 - In situ* heating, 291
 - In situ* heating techniques, 375
 - Insoluble polysaccharide, 488
 - Insoluble polysaccharides during pollen development in rice (*Oryza sativa* L.), 488
 - Interfacial structure, 300
 - Interferometry, 306
 - Intrauterine contraceptive device, 537
 - Invariant features, 515
 - In vitro* culture of medicinal plants, 576
 - In vitro Kalanchoe pinnata* (Lamarck) Persoon (Crassulaceae), 576
 - Ion diffraction, 599
 - Ion-induced secondary electron imaging, 282
 - Irradiation-induced bubbling response, 346
 - Ischemia, 117
 - Isotropic and anisotropic topographies, 670
- K**
- Kalanchoe pinnata*, 576
 - Keratin, 462
 - Keratin (intermediate) filaments, 462
- L**
- Labels, 33
 - Lacuna, 327
 - Lacuno-canalicular system, 132
 - Lamellae, 569
 - Lasers, 779
 - Lateral scan for reducing the error in topography, 630
 - Lattice curvature, 831
 - Leaf anatomy, 576
 - Lift-out technique, 662
 - Light elements imaging, 416
 - Light microscopy, 239

Lipid nanoparticles, 456
 Liquid flow, 622
 Liquid STEM, 795
 Live-cell fluorescence, 313
 Live imaging, 747
 Local feature descriptors, 515
 Localization microscopy, 64
 Local magnification effects, 643
 Low energy, 604
 Low-loss EELS mapping, 416
 Low vacuum SEM, 805
 Low-Z imaging, 366

M

Macrophage, 478
 Magnetic field enhancement, 805
 Magnification, 561
 Magnification effects in APT, 643
 Major-element analysis, 218
 Malachite, 594
 Mammalian mineralized tissue, 327
 Materials characterization, 810
 Measurement of oxygen diffusivity and permeability in polymers, 725
 Measurement uncertainty, 273
 Metallic multilayer, 662
 Metastables, 805
 Microanalysis, 248
 Microanalysis reference materials, 1
 Microelectronics, 1
 Microfluidic system for TEM, 622
 Microheterogeneity, 1
 Micrometers-thick substrates, 795
 Microscopic heterogeneity, 725
 Microscopic multispectral imaging, 488
 Microscopy of cells, 622
 Microspectroscopy, 507
 Microstamping, 670
 Microstructure, 175, 346
 Microtubule, 472
 Microvasculature fractal and image analysis, 73
 Missing wedge, 210
 MMP-2, 117
 Modeling of X-ray spectra, 583
 Mollusc shell, 91
 Monochromated, aberration-corrected TEM, 386
 Monochromator, 386
 Monte Carlo, 248
 Monte Carlo modeling, 599
 Monte Carlo simulations, 604, 795, 821
 Morphological fractal analysis of cancer cells, 472
 Multiphoton, 117
 Multivariate curve resolution, 478
 Multivariate statistics, 259

N

Nanobeam, 614
 Nanobeam diffraction, 183
 Nanoparticles, 33, 54, 200, 233, 614, 622, 795
 Nanoscale X-ray microscopic imaging, 327
 Nanoscopy, 64
 NanoSIMS, 91
 Nanostructure, 425

Nanowires, 614
 Nearest neighbor distances, 643
 Nephron, 677
 Neural, 80
 Neural differentiation, 80
 Niagara Escarpment, 306
 Nickel aluminides, 662
 Nickel base superalloy, 273
 NIST microanalysis reference material (RM 8905), 1
 Nitrifying bacteria, 550
 Nonlinearity, 725
 Novel camera rotating device, 239
 Nye tensor, 831

O

Omega filter, 386
 Operating method, 630
 Optical sectioning, 233
 Organelle, 747
 Organic membranes, 91
 Orientation map, 831
 Osteocytes, 132, 327
 OTR, 43
 Oxygen sensor, 725

P

Pancreas, 462
 Parallel electron diffraction, 614
 Parallel scan, 630
 Particle, 248
 Patterned nanostructures, 210
 PCA, 259
 Pearson's correlation, 710
 Phase-change material, 291
 Phase classification, 810
 Phase classification of hyperspectral materials images, 810
 Phase contrast, 166, 434, 785
 Phase detection limit, 434
 Phase fraction, 273
 Phase imaging, 366
 Phase plate, 785
 Photomicrography, 239
 Plant development, 576
 Plasma treatment, 764
 Platelets, 33
 Polarized light, 306
 Polarized-light interferometry of calcium carbonate deposition, 306
 Pollen abortion, 488
 Polymerization technique in composite resin restorations, 779
 Polyurethane, 764
 Posterior esophagus of *Bulla striata* (Mollusca, Opisthobranchia), 688
 PRAM, 291
 Prismatic layer of the shell of the pearl oyster *Pinctada margaritifera*, 91

Q

Quantitation, 710
 Quantitative analysis of STEM-EDS spectrum images, 259
 Quantitative composition analysis, 604

Quantitative X-ray microanalysis, 821
 Quantitative X-ray microanalysis for electron microscopy, 821
 Quantum dots, 153
 Quaternion, 831
Quercus suber, 569

R

Radiation damage, 346
 Raman spectroscopy, 13
 Rat, 699
 Rat genital epithelium, 337
 RCT, 43
 Relative transmittance value, 488
 Renal tubule, 677
 Resin-cast SEM, 132
 Resolution, 99
 Rice male sterility, 488
 RssC gene, 755

S

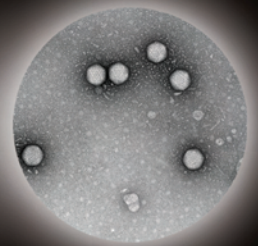
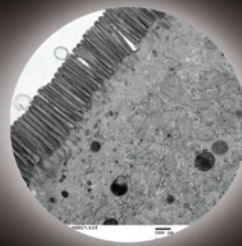
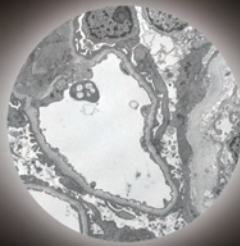
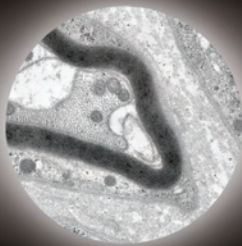
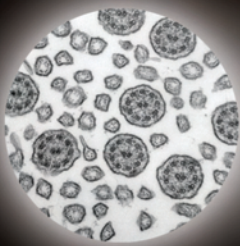
Sample thickness and in-concentration of InGaAs quantum wells, 604
 Scanning confocal electron microscopy, 233
 Scanning electron microscopy, 143, 218, 273
 Scanning transmission electron microscopy (STEM), 604, 622, 795
 Scanning transmission microscopy, 599
 Scatter diagram analysis, 594
 Secondary electron imaging, 805
 Secretory cells, 688
 SEM, 550, 670, 764
 SEM tomography, 462
 Serial registration of light microscopical images, 239
 Serial section registration, 239
Serratia marcescens, 755
 Shapes, 33
 Shot noise, 795
 SIFT, 515
 SiGe films, 1
 SiGe technology, 1
 Signal-to-noise ratio, 434
 Silica aerogel matrix, 200
 Silica sol-gel films, 670
 Silica thin films produced via microstamping, 670
 Simulations, 194, 248
 Single image in a nickel base superalloy, 273
 Single molecules, 64
 Single section stereology, 273
 Sodium phosphates, 346
 Soft lithography, 670
 Spatial architecture of nitrifying bacteria biofilm, 550
 Spatial distribution maps, 99
 Spatial resolution in atom probe tomography, 99
 Spatial statistics, 273
 Specimen preparation, 218
 Spectral crosstalk, 478
 Spectral imaging, 478
 Spectrum imaging, 248, 259
 Spherical correction, 441
 Spherically corrected foil lens, 441

- Spot diffraction patterns, 614
 Spreading and propagation of human bone marrow stem cells, 670
 Stacking configurations, 194
 Stage scanning, 233
 Staining process, 456
 Standardless microanalysis, 821
 STEM, 153, 259, 375, 416, 425
 STEM imaging of nanoparticles, 795
 STEM tomography, 462
 Stereology, 677
 Stern-Volmer equation, 725
 Store-operated calcium channels (SOCs), 313
 Streamlined embedding of cell monolayers, 747
 Structure of heteroepitaxial $\text{Fe}_3\text{O}_4/\text{BaTiO}_3$ bilayers, 300
 Sub-Ångstrom low voltage performance, 386
 Suberin, 569
 Suberized cell walls of cork, 569
 Submucosa and intestinal polyps in $Apc^{\text{Min/+}}$ mice, 73
 Substrate for cryo-electron microscopy, 43
 Super-resolution, 64
 Surface, 425
 Surface oxidation, 583
 Synchrotron, 507
 Synchrotron UV fluorescence microscopy, 507
- T**
- 3D analysis of carbon nanotube networks, 210
 3D atom probe tomography (APM), 636
 3D imaging, 445
 3D optical sectioning, 233
 3D reconstruction, 239
 3D STEM of biological specimens, 54
 Taxonomy, 735
 Teleost, 677
 TEM, 43, 137, 210, 291, 393, 434, 456, 688
 TEM corrected for spherical and chromatic aberration, 393
 TEM of lipid vesicles for drug delivery, 456
 TEM/STEM, 614
 TEM study of CoFe_2O_4 ferrite nanoparticles, 200
 Tephra, 218
 Testate amoebae, 735
 Testate amoebae examined by confocal and two-photon microscopy, 735
 Theta rotation, 239
 Thickness determination, 21, 604
 Thin film, 636
 Thin-film analysis, 21
 Thin sections, 54
 Three-dimensional electron microscopy, 54
 Three-dimensional imaging, 233
 Three-dimensional STEM, 795
 Tie2, 699
 Tilted illumination, 393
 Time-correlated single-photon counting (TCSPC), 313
 Tip-sample angle, 630
 Tip-sample angle in atomic force microscopy, 630
 TOF-SIMS, 91
 Tomographic methods to study keratin filament networks, 462
 Tomographic reconstruction, 99
 Topography, 755
 Trabeculae, 327
 Trafficking, 747
 Trajectory aberration, 99
 Transmission electron microscopy, 300, 346, 441, 653, 662, 785
 Travertine, 306
- U**
- Ulceration, 117
 Ultrastructural imaging of *Candida albicans*, 337
 Ultrastructure, 80, 337, 537, 569
 Unraveling the *RssC* gene of *Serratia marcescens*, 755
 Use of EM in secretion of immune mediators by human eosinophils, 653
- USPIO, 456
 UV microscopy, 507
- V**
- Vaginal yeasts, 537
 Vasculature, 73
 Vaterite, 306
 Vesicle, 747
 Vesicular transport, 653
 Viability, 537
 Visualization of localization microscopy data, 64
 Visualization of morphological and molecular features, 117
 Visualization of the Orai1 homodimer, 313
- W**
- Water, 622
 Wave-function reconstruction, 785
 Wrap-around, 831
- X**
- XANES, 91
 XPS, 764
 X-ray, 248, 259
 X-ray computed tomography, 550
 X-ray emission, 21
 X-ray mapping, 594
 X-ray mapping and scatter diagram analysis of artist's pigments, 594
 X-ray microscopy, 327
- Y**
- Young's fringe method, 393
- Z**
- Zernike phase contrast, 441
 Zernike phase contrast electron microscopy, 441
 ZnO, 425



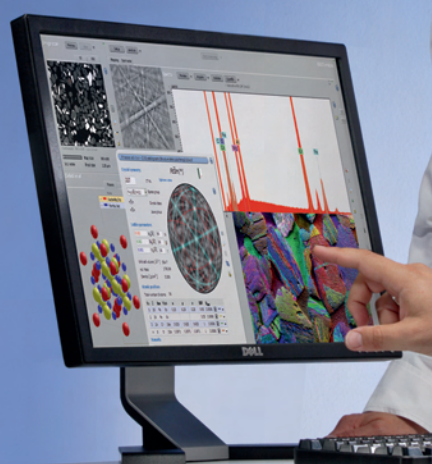
High Definition Digital
TEM Cameras with
1 to 16 Megapixels

- AMT SOLUTIONS
- Life Science Cameras
- Material Science Cameras
- Easy To Use Software
- Reliability and Services
- TEM Integration
- Extensive Support

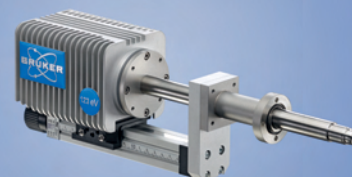


3 Electronics Avenue, Danvers, MA 01923 • Phone: 978.774.5550 • www.amtimaging.com

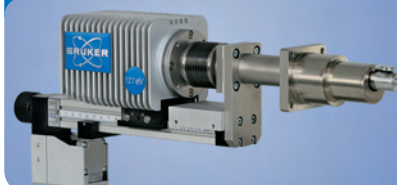
EDS and EBSD for Nanoscience



XFlash® 5000 series for SEM



XFlash® 5030T for S/TEM



eFlash¹⁰⁰⁰⁺ EBSD Detector



QUANTAX EDS for SEM

- Unique ESPRIT TQuant software for quantification at low acceleration voltages (< 5 kV)
- Unmatched resolution at all energies (Mn K α \leq 123 eV, F K α \leq 54 eV, C K α \leq 46 eV)

QUANTAX EDS for S/TEM

- Low weight, LN₂-free, large solid angle XFlash® SD Detector
- Optimum performance in conventional and Cs-corrected S/TEM

QUANTAX CrystAlign for EBSD

- High-speed indexing of 800 patterns/s (200 patterns/s simultaneous EBSD/EDS acquisition)
- Colored SEM images for better grain differentiation using forescattered electron detectors
- **NEW** dynamic simulation of diffraction patterns

www.bruker-nano.com

think forward

EDS/EBSD



Cooling Stages

Recirculating Heaters
and Chillers

Film Thickness Monitors

Sputter Coaters

SEM/TEM Carbon Coaters

Vacuum Evaporators

Glow Discharge Systems

RF Plasma Etchers/
Plasma Reactors

Critical Point Dryers

Freeze Dryers

Cryo-SEM Preparation
Systems

Vacuum Pumps & Accessories

Evaporation Supplies

well equipped...

EMS is committed to providing the highest quality products along with competitive pricing, prompt delivery and outstanding customer service.

not just products...

Electron Microscopy Sciences is pleased to announce that a new brochure for electron microscope specimen preparation equipment is available, including 20 pages of articles reviewing electron microscope preparation techniques. These are:

- Sputter Coating Techniques and Applications
- Silver as a Removable Coating for Scanning Electron Microscopy
- Carbon Coating Techniques and Applications
- Plasma Etching and Ashing Techniques and Applications
- A summary of the Critical Point Drying Method
- Freeze Drying Principles
- Cryo-SEM — the Advantages



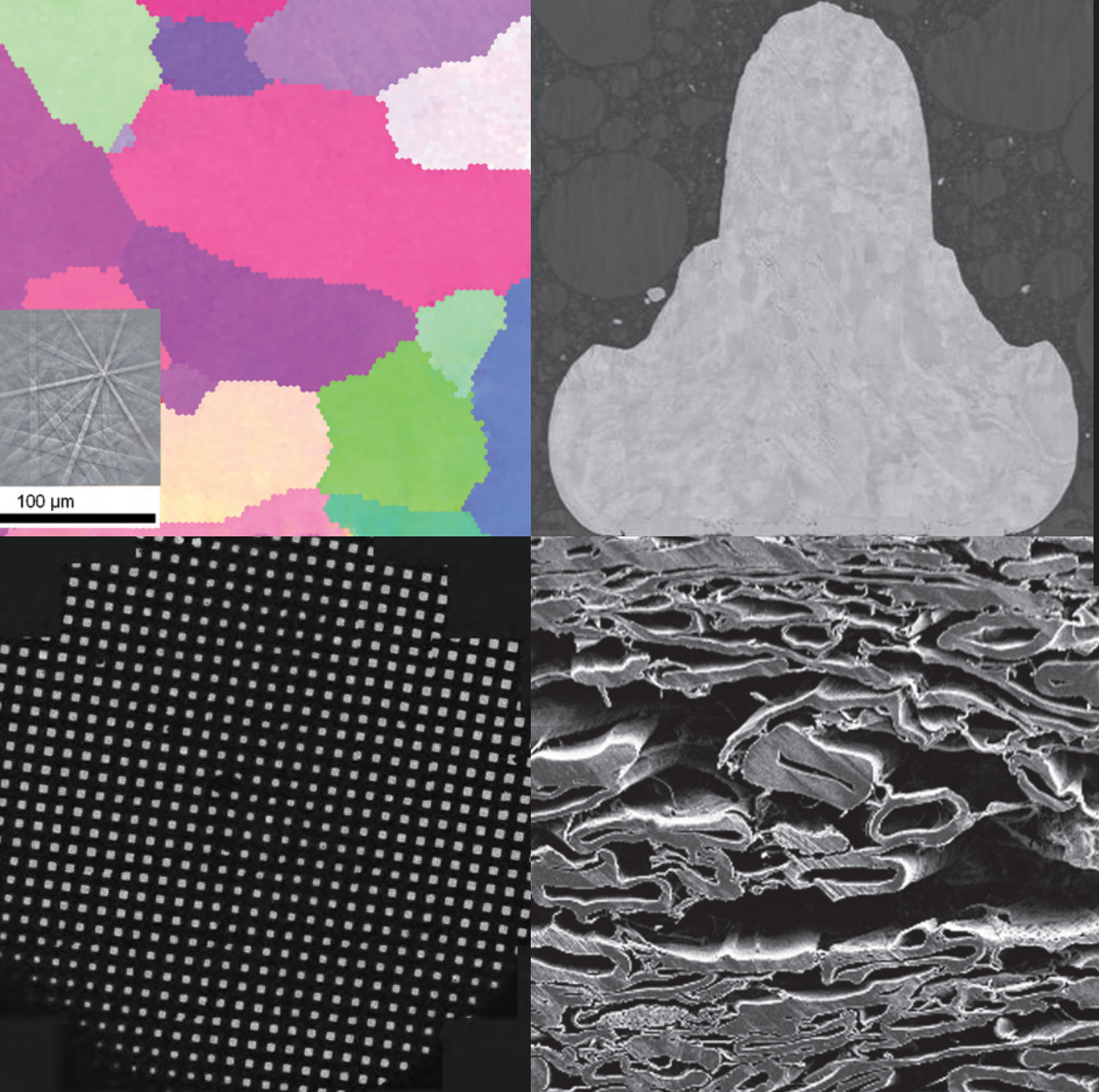
The new brochure as well as the EMS printed catalog and CD-ROM eBook can be ordered on line.

For more information, please visit our website at www.emsdiasum.com



**Electron
Microscopy
Sciences**

Electron Microscopy Sciences
P.O. Box 550 • 1560 Industry Rd. • Hatfield, Pa 19440
Tel: (215) 412-8400 • Fax: (215) 412-8450
email: sgkcck@aol.com • www.emsdiasum.com



Top images (left to right): Al-alloy; Gold wire bonding. Bottom images (left to right): Montage overview of plunge frozen grid; Paper.



Your Image Starts Here!

Innovative Sample Preparation for a Wide Range of Applications

Leica Microsystems offers the most comprehensive product portfolio for precise preparation of high-quality biological and industrial materials samples for TEM, SEM, LM, Confocal, and AFM. Our instruments meet the highest expectations for precision and ergonomomy in the field of nanotechnology.

Sample Preparation for Every Need

Sectioning, processing, staining, planing, target polishing, ion milling, contrasting, high pressure freezing, cryo processing and transfer, coating and drying are all expertly addressed by one or more of our innovative instruments.

www.leica-microsystems.com

Living up to Life

MICROSYSTEMS

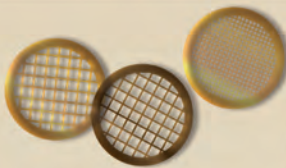


SPI Supplies.

**The complete source for
all your microscopy needs...**

just a click away.

2spi.com



Visit SPI Supplies to view the complete on-line catalog with
up-to-the-minute product and pricing information.



SPI Supplies Division of **STRUCTURE PROBE, Inc.**

P.O. Box 656 • West Chester, PA 19381-0656 USA

Phone: 1-610-436-5400 • 1-800-2424-SPI (USA and Canada) • Fax: 1-610-436-5755 • E-mail: sales@2spi.com



Evactron De-Contaminator

Helps you get the most out of your nanomanipulator



Contamination buildup after 45 minutes with no cleaning

Buildup of hydrocarbon contamination on nanomanipulators in SEMs and FIBs can lead to poor ohmic contact, as seen in the graph. After 60 minutes of exposure to the electron beam, the resistance on the nanomanipulator increases by two orders of magnitude. This increase in resistance is again observed even after the tip is sputter cleaned with a FIB.

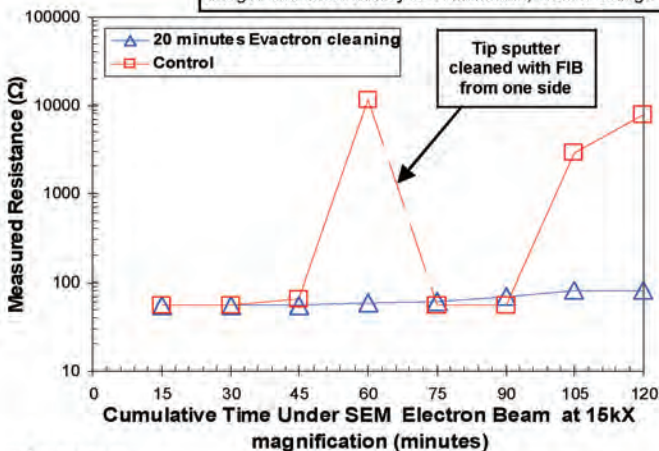
After installing the Evactron De-Contaminator on the FIB and performing a 20 minute clean, the ohmic contact remains below 100 Ω for 120 minutes. This means that you can do measurements longer and more reproducibly after Evactron cleaning. The Evactron De-Contaminator is a compact device which is easy to install and use on any SEM or FIB.



XEI Scientific, Inc.

1755 East Bayshore Rd., Suite 17, Redwood City, CA 94063
 Contact: PHONE 1.650.369.0133 or 1.800.500.0133
 E-MAIL information@evactron.com
 Website: www.evactron.com

Images and data courtesy of G. McMahon, Boston College



Minor contamination buildup after 120 minutes post cleaning



MICROSCOPY & MICROANALYSIS 2011
 August 7-11 ★ Nashville Tennessee

PLENARY SPEAKER:

Professor Stefan W. Hell

Director of the Max Planck Institute for Biophysical Chemistry
 Head of the Department of NanoBiophotonics
 Göttingen, Germany

Professor Hell is widely acknowledged for innovations that have shattered Abbe's diffraction-limited resolution barrier in a light-focusing microscope. His talk, "Nanoscopy with Focused Light" will be presented on Monday, August 8, 8:30 AM at the Nashville Convention Center.

M&M 2011 Symposia Topics include:

Biological

- Sub-diffraction Resolution Microscopy
- Protein Nanomachines
- Reflecting on Total Internal Reflection Fluorescence Microscopy

Physical

- X-ray Microanalysis – 60 Years after Castaing
- Albert Crewe Memorial Symposium: From Single-Atom Images to Atom-by-Atom Analysis
- 3D Quantitative Microanalysis of Complex Materials

Instrumentation & Techniques

- Applications of Focused Ion Beam to Physical and Life Sciences
- Aberration-Corrected Analytical Electron Microscopy
- Advances in Spatially-Resolved Electron Energy Loss Spectroscopy
- Metallographic Techniques and Materials Characterization



M&M 2011 Call for Papers

Abstract Submission Website OPEN: **October 20, 2010**

<http://www.microscopy.org/MandM/2011>

Mark your calendars now!



DiATOME

DIAMOND KNIVES

40 YEARS

OF DEVELOPMENT, MANUFACTURING, AND CUSTOMER SERVICE

What have we achieved in this period?

ultra 45° the first diamond knife with an absolutely score-free, hydrophilic cutting edge.

semi the first diamond knife for alternating sectioning ultrathin/semithin.

cryo the diamond knife for sectioning at low temperature.

histo the first diamond knife for semithin sections for light microscopy.

ultra 35° the diamond knife for optimized sectioning results in almost all applications.

STATIC LINE II the ionizer for eliminating electrostatic charging in ultramicrotomy.

cryo-P a cryo knife with a patented platform for section pick up.

cryo immuno the optimized cryo diamond knife for the Tokuyasu technique.

ultra sonic the oscillating diamond knife for room temperature sectioning.

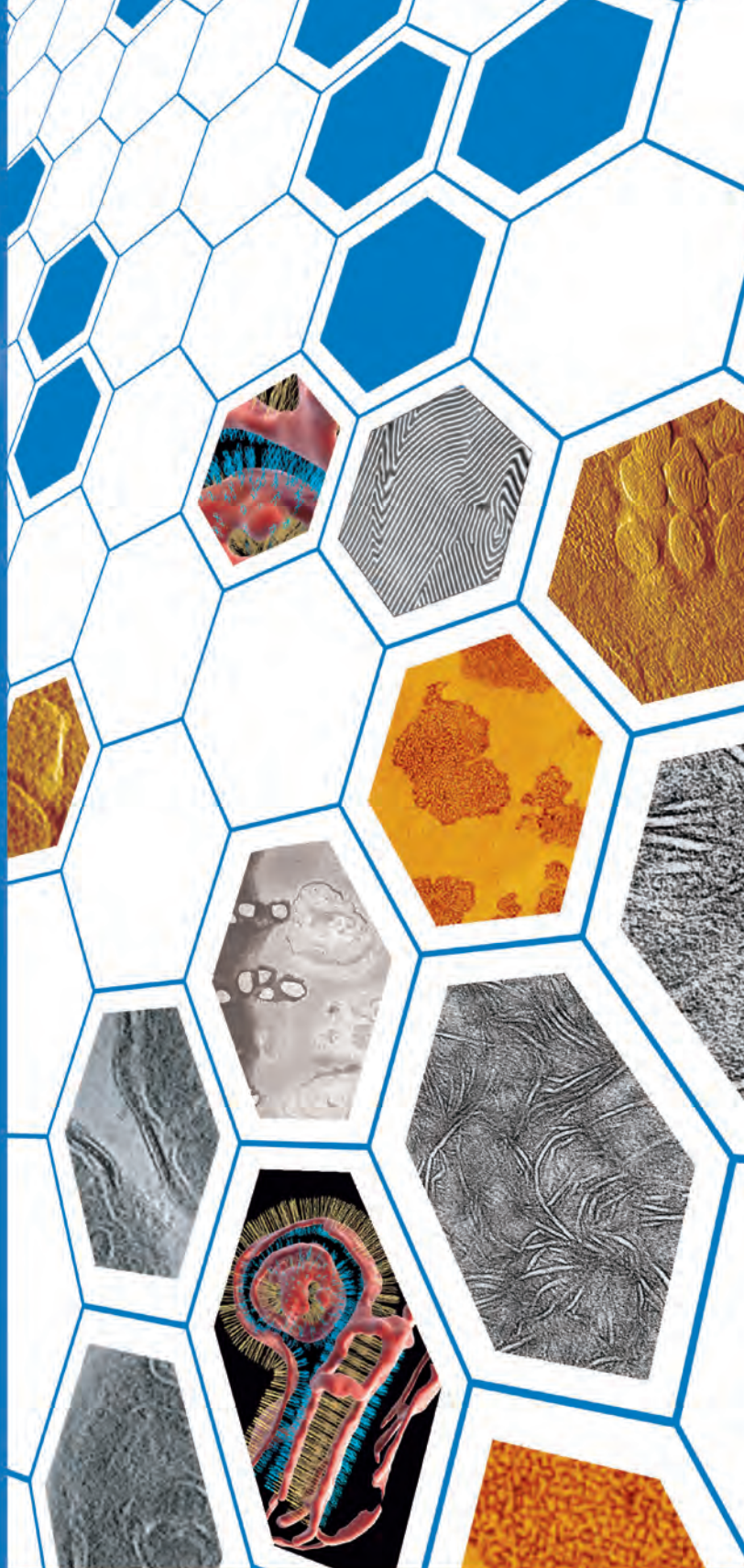
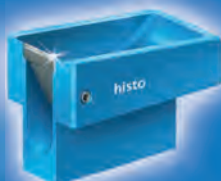
cryotrim 45 and 25 optimizing trimming with diamond blades.

ultra AFM & cryo AFM the first diamond knives for AFM at room and low temperatures.

cryo 25° for sectioning frozen hydrated specimens.

What services can we offer you?

- Technical assistance in all fields of ultramicrotomy.
- Free sectioning tests for all types of samples.
- Make use of our many years of experience in perfecting our knives.
- Custom knives, tools, and boats.
- Special purchase programs.
- Workshops and training.



DiATOME

for all your sectioning requirements

P.O. Box 550
1560 Industry Rd.
Hatfield, Pa 19440
Tel: (215) 412-8390
Fax: (215) 412-8450
email: sgkck@aol.com
www.emsdiasum.com

For more information, please call or write us today,
or visit us online at: www.emsdiasum.com



Only from

**MICRO
STAR**

**Flawless quality
proven with one year guarantee.**

MICRO STAR DIAMOND KNIVES 800 533 2509 FAX 936 294 9861 WWW.MICROSTARTECH.COM

INDEX TO ADVERTISERS

Advanced Microscopy Techniques, AMT	A3, A15
Brüker AXS	A9, A16
DiATOME	A11, A21
EDAX	A12
Electron Microscopy Sciences, EMS	A5, A17
Gatan	A6, Cover 3
JEOL	A10, Cover 4
Leica Microsystems	A18, Cover 2
Micro Star Diamond Knives	A13, A22
MSA Announcements	846, A20
SPI Supplies	A14, A19
Ted Pella	844, 845
XEI Scientific	A13, A20

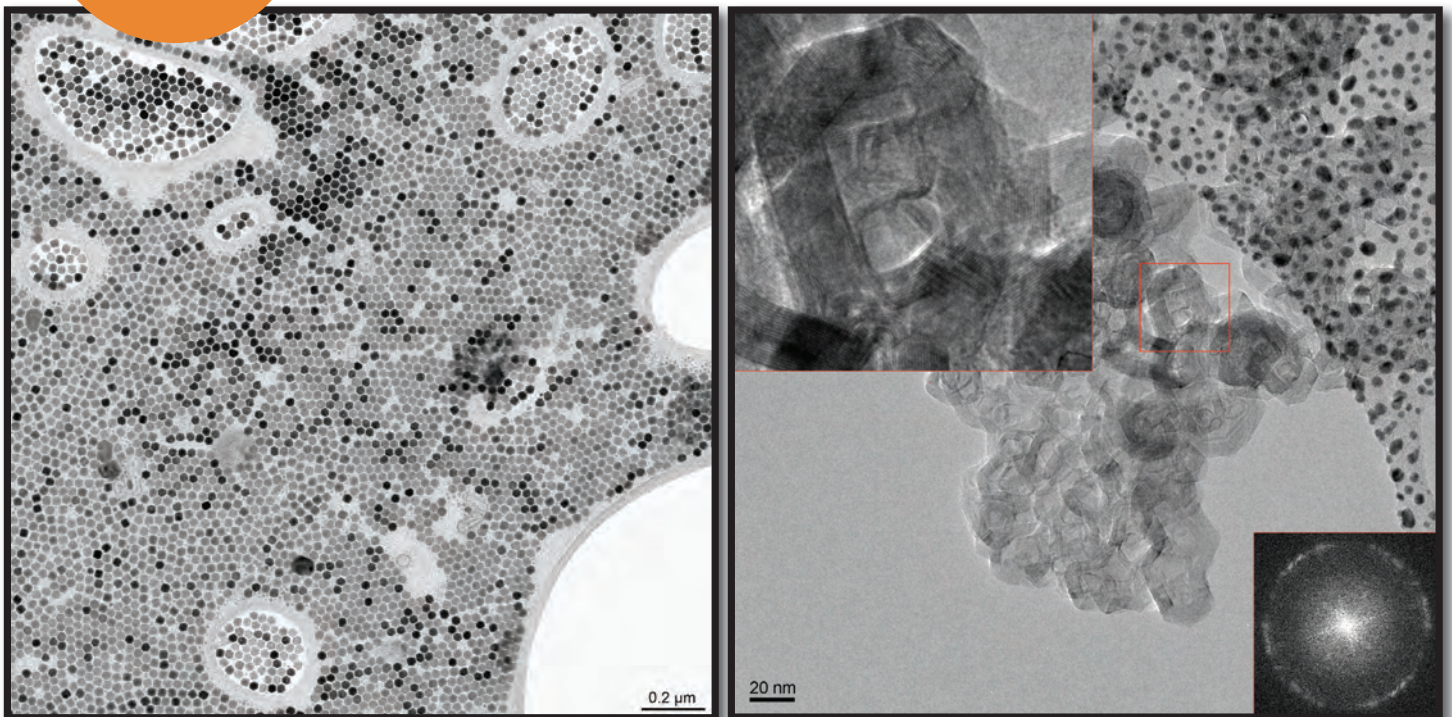
gatan gets it

UltraScan®
The benchmark
re-invented

Learn about the
NEW
UltraScan® 1000XP,
at
www.gatan.com/answers

**Higher
resolution
Now at
TV-rate**

**Model 994
UltraScan®
1000XP**



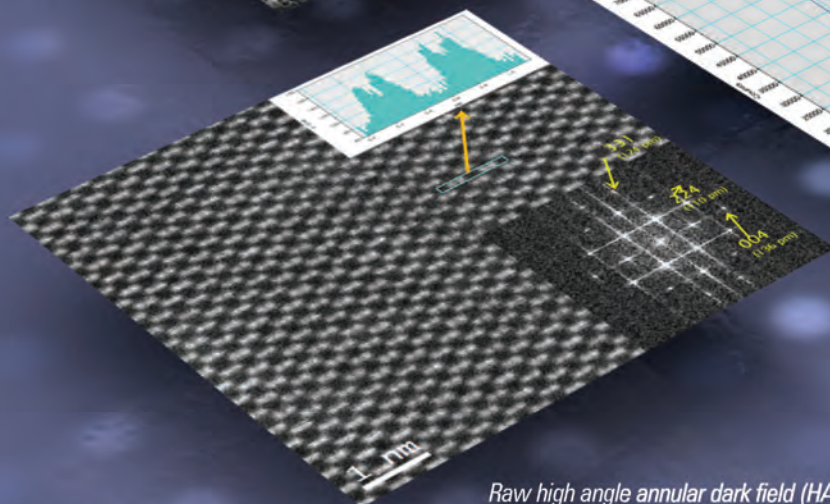
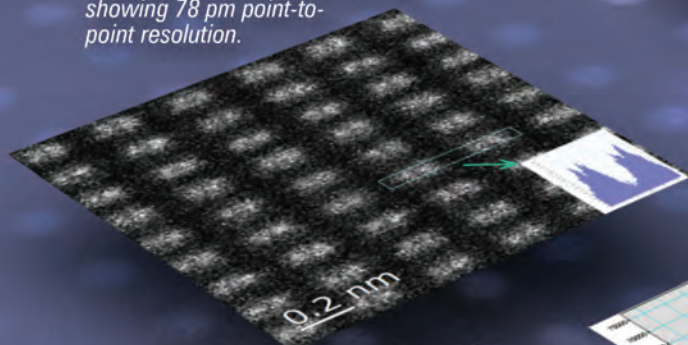
Left Image: Nano-crystals recorded with Gatan UltraScan® 1000XP CCD camera on a 120kV TEM. Image courtesy of Dr. Kent McDonald, University of California, Berkeley. Right Image: Graphitized carbon showing 0.34 nm lattice and FFT recorded with Gatan UltraScan® 1000XP CCD camera (200kV).



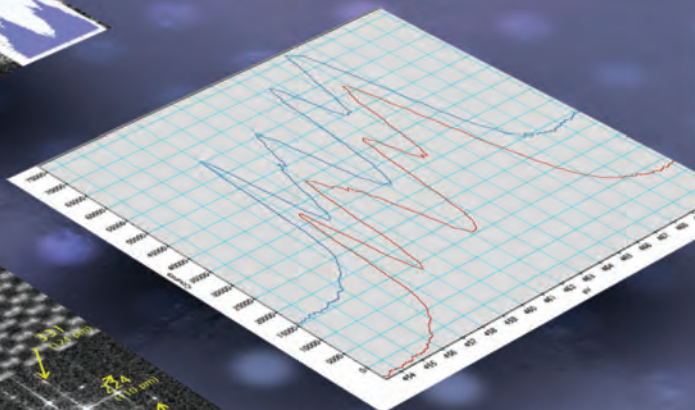
Unrivaled Raw Data You Can Believe.

Cold FEG S/TEM sets a new benchmark
for aberration-corrected imaging
and chemical mapping.*

Raw high angle annular darkfield (HAADF) STEM image of Si (112) showing 78 pm point-to-point resolution.



Raw high angle annular dark field (HAADF) STEM image of Si (110) at 80 kV.



EELS spectra of rutile and anatase TiO_2 showing fine structure differences in the Ti-L_{2,3} edge made visible by the low energy spread of Cold FEG.

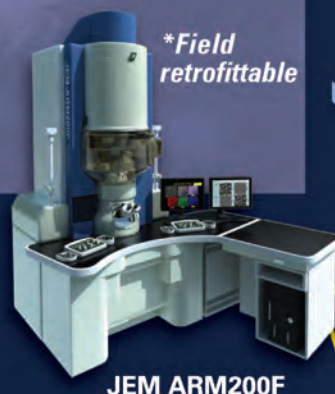
Contact us for a demo and the raw data is yours!



JEOL

Another
Extreme Imaging
Solution

Global Solutions Provider for Advanced Technology
www.jeolusa.com • salesinfo@jeol.com
978-535-5900



JEM ARM200F

**Field retrofittable*

Cold Atomic Resolution S/TEM