

ROMAN SOCIETY

HUGH LAST AND DONALD ATKINSON FUNDS

Applications for grants are invited for financial assistance towards the undertaking, completion or publication of work that relates to any of the general scholarly purposes of the Roman Society, which are to promote the study of the history, archaeology, literature and art of Italy and the Roman Empire, from the earliest times down to about A.D. 700. In addition, postgraduate students may apply for small grants for visits to conferences and for other research expenses. Grants for the organisation of conferences, colloquia and symposia will be considered only in exceptional circumstances.

Applications, together with two references, should be made before 15 January and sent to the Secretary, Roman Society, Senate House, Malet Street, London WC1E 7HU. It is the responsibility of applicants to arrange for their references to reach the Society by the same date. Application forms may be obtained from the Secretary.

SCHOOLS COMMITTEE

The Society's Schools Committee makes grants to schools to help promote the teaching of Latin and Roman studies. Most of the grants are awarded for the purchase of textbooks and other books on Roman topics, but the Committee also makes awards to groups and schools organising lectures or study days on Roman themes. Applications from schools planning to start courses in Latin are particularly welcome.

The annual budget is *c.* £6,000, and the usual level of award is £50 to £350. The Committee meets three times a year. Applications should be sent to the Secretary, Roman Society, Malet Street, London WC1E 7HU to arrive by 1 February, 1 July or 1 November in any year. There is no special application form, but applicants should provide information about the level of their departmental budget, the type of courses taught, and in the case of applications for books, a list of the books wanted with their prices.

REPRESENTATION AT OVERSEAS CONFERENCES

The Council of the Society invites applications from members to attend a conference of a sister body in another country as an official representative of the Society. The Society is willing to pay up to a maximum of £500 for a single conference, to help cover the conference fee and travel costs. The delegate will be required to submit a report to Council on the state of Roman studies in the country concerned. Preference will be given to a delegate going to a country where the subject may benefit from the Society's representation.

Applications should be sent to the Secretary, at least six months before the conference, for approval by Council.

ARCHAEOLOGY COMMITTEE

The Archaeology Committee was formed in 1993. Its original brief was to organise a regular conference to act 'as a forum where those interested in the archaeology of the Roman Empire and those more specifically concerned with Roman Britain' could come together. This initiative has led to a highly successful series of international, biennial conferences, the first three being held in the Universities of Reading, Nottingham and Durham respectively. The fourth will be in the University of Glasgow from 29 March to 1 April 2001; further details and a booking form are available from Dr W.S. Hanson, Dept of Archaeology, University of Glasgow, Glasgow G12 8QQ; e-mail: w.hanson@archaeology.gla.ac.uk; fax 0141 330 3544.

The Committee also acts as a conduit through which the Society's advisory role in archaeological matters, as one of the national period societies, can be fulfilled. It considers reports and responds as appropriate. The Committee plans to organise a series of lectures on Roman topics outside London in association with some of the regional societies.

The current members are: Dr I.P. Haynes (Chairman), Miss L. Allason-Jones (Secretary), Mr R.J. Brewer, Miss A.J. Claridge, Dr J. Davies, Dr A.S. Esmonde Cleary, Dr H.E.M. Cool, Dr W.S. Hanson, Dr R.C. Hingley, Dr S. James, Dr D. Jennings, Dr P.C. Roberts, Dr S.A. Scott, Mr A. Wilmott and a representative of the Theoretical Roman Archaeology Conference.

HELLENIC AND ROMAN SOCIETIES

SLIDES COLLECTION

The Slides Collection contains over 6,700 coloured 35 mm slides covering a wide variety of subjects, including sites on the Greek mainland, the Greek islands, Cyprus, Rome, Italy and the Roman Empire, Etruscan tomb paintings, Greek vases, Roman frescoes and mosaics, the Roman army, and Roman Britain. Slides of artefacts form a large part of the collection and include bronzes, jewellery and vases as well as maps, plans, models and reconstructions. A computerised subject index is available. A Greek Slide Catalogue is available at £7.50, a Roman Slide Catalogue at £6.50 *or* both for £12 (postage £1 extra for each catalogue).

Individual slides and sets with notes may be hired by members. Filmstrips are available for sale. Further details may be obtained from the Keeper of Slides or from the web-site: <http://www.sas.ac.uk/icls/library/slides.htm>.

ROMAN SOCIETY PUBLICATIONS

PERIODICALS BACK NUMBERS

Journal of Roman Studies ISSN 0075-4358

58-66, 68, 70, 72-8 (1968-76, 1978, 1980, 1982-8):
£15/US\$30/€30 - individuals, £16/US\$32/€32 -
institutions, £21/US\$42/€42 - booksellers
79 (1989):

£17/US\$34/€34 - individuals, £18/US\$36/€36 -
institutions, £25/US\$50/€50 - booksellers

81-2 (1991-2):

£20/US\$40/€40 - individuals, £25/US\$50/€50 -
institutions, £30/US\$60/€60 - booksellers

85-6, 88 (1995-6, 1998):

£25/US\$50/€50 - individuals, £30/US\$60/€60 -
institutions, £36/US\$72/€72 - booksellers

Indexes to vols 21-40 & 41-60 (1931-50 & 1951-70):
£5/US\$10/€10 each

Britannia ISSN 0068-113X

2-8 (1971-7):

£7.50/US\$15/€15 - individuals, £8/US\$16/€16 -
institutions, £10/US\$20/€20 - booksellers

11-14 (1980-3):

£12/US\$24/€24 - individuals, £13/US\$26/€26 -
institutions, £18/US\$36/€36 - booksellers

15-19 (1984-8):

£15/US\$30/€30 - individuals, £16/US\$32/€32 -
institutions, £21/US\$42/€42 - booksellers

21 (1990):

£17/US\$34/€34 - individuals, £18/US\$36/€36 -
institutions, £25/US\$50/€50 - booksellers

22-4 (1991-3):

£20/US\$40/€40 - individuals, £25/US\$50/€50 -
institutions, £30/US\$60/€60 - booksellers

25-30 (1994-9):

£25/US\$50/€50 - individuals, £30/US\$60/€60 -
institutions, £36/US\$72/€72 - booksellers

All prices per vol.

Index to Britannia I-XXV (1970-94)

1995, 226 pp. ISBN 0 907764 19 3 £20/US\$40/€40

OFFPRINTS

Journal of Roman Studies

67 (1977) *Air Reconnaissance in Roman
Britain, 1973-76*

J.K.S. St Joseph £1.50/US\$3/€3

69 (1979) *Elegiacs by Gallus from Qasr Ibrim*

R.D. Anderson, P.J. Parsons & R.G.M.

Nisbet £3/US\$6/€6

76 (1986) *The Lex Irnitana: A New Copy of
the Flavian Municipal Law (97 pp., 19 pls)*

Julián González £8/US\$16/€16

Britannia

9 (1978) *Production and Distribution of Tiles in
Roman Britain with particular reference to the
Cirencester region*

A. McWhirr & D. Viner £1/US\$2/€2

10 (1979) *Roman Timber Military Gateways in
Britain and on the German Frontier*

W.H. Manning & I.R. Scott £2/US\$4/€4

*Survey of Tile from the Roman Bath House at
Beauport Park, E. Sussex*

Gerald Brodribb £1/US\$2/€2

12 (1981) *The Excavation of a Romano-British
Farmstead and Cemetery on Bradley Hill,
Somerton, Somerset*

Roger Leech £1/US\$2/€2

20 (1989) *The Numeri of the Roman Imperial
Army*

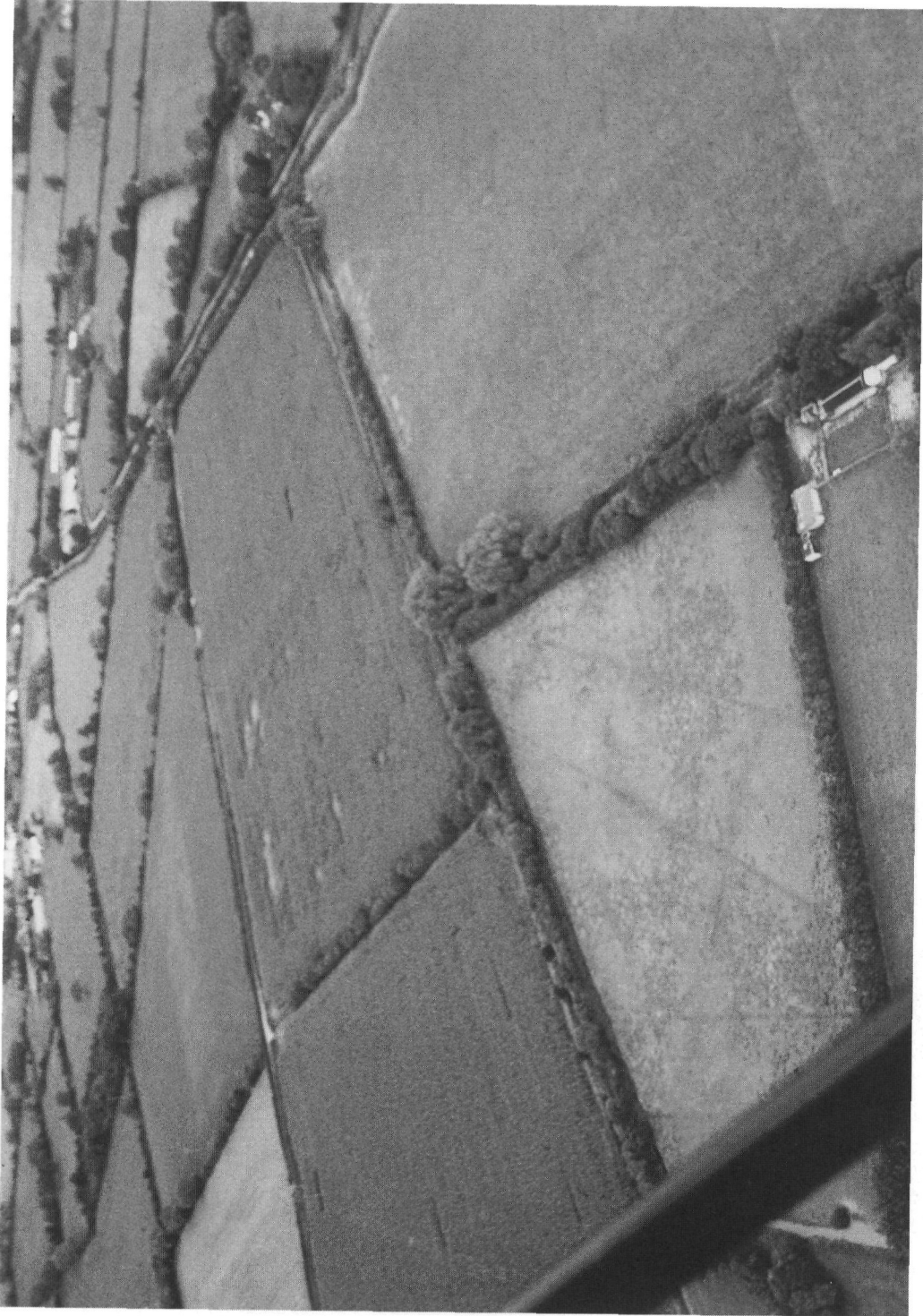
P. Southern £4.50/US\$9/€9

*Roman Britain in 1990 and for every year up to
1999* per copy £5/US\$10/€10

**For details of ordering
see inside back cover**

PLATE SECTION

PLATE I



Aerial view of Banwell Moor, looking NW. Trench I lies centre right in 'Twenty Acre' Field. Part of the relict landscape is showing as a vegetation mark in the pasture bottom left. (p. 73)

PLATE II



Aerial view of Kenn Moor (centre) looking NW towards Clevedon and the Severn Estuary (top). Parts of the relict landscape can be seen as earthworks (Fields 6-8: centre) and soil marks (Field 9: centre bottom). Trenches G-J (Field 5 can be seen centre right). (p. 81)

PLATE III



A. Southern end of Banwell Moor Trench II, showing box section through the modern topsoil/ploughsoil (top), sterile late/post-Roman alluvium, and the dark later Romano-British buried soil. One of the third-century ditches (F218) cuts diagonally across the trench and is sealed by the buried soil. (pp. 78–81)



B. Kenn Moor, Trench A: corn-drier, looking west. The plan of that part of the structure that was not excavated was established through probing. (p. 93)

PLATE IV



A. Kenn Moor, Trench A: box section across Ditch F7 on the eastern side of the corn-drier mound, looking south. (p. 95)



B. Dullatur: aerial view of the excavations from the south, looking towards Dullatur House at centre top and The Lane, the tree-lined avenue. (p. 249)

(Crown copyright: RCAHMS)

PLATE V



(Crown copyright: Historic Scotland)

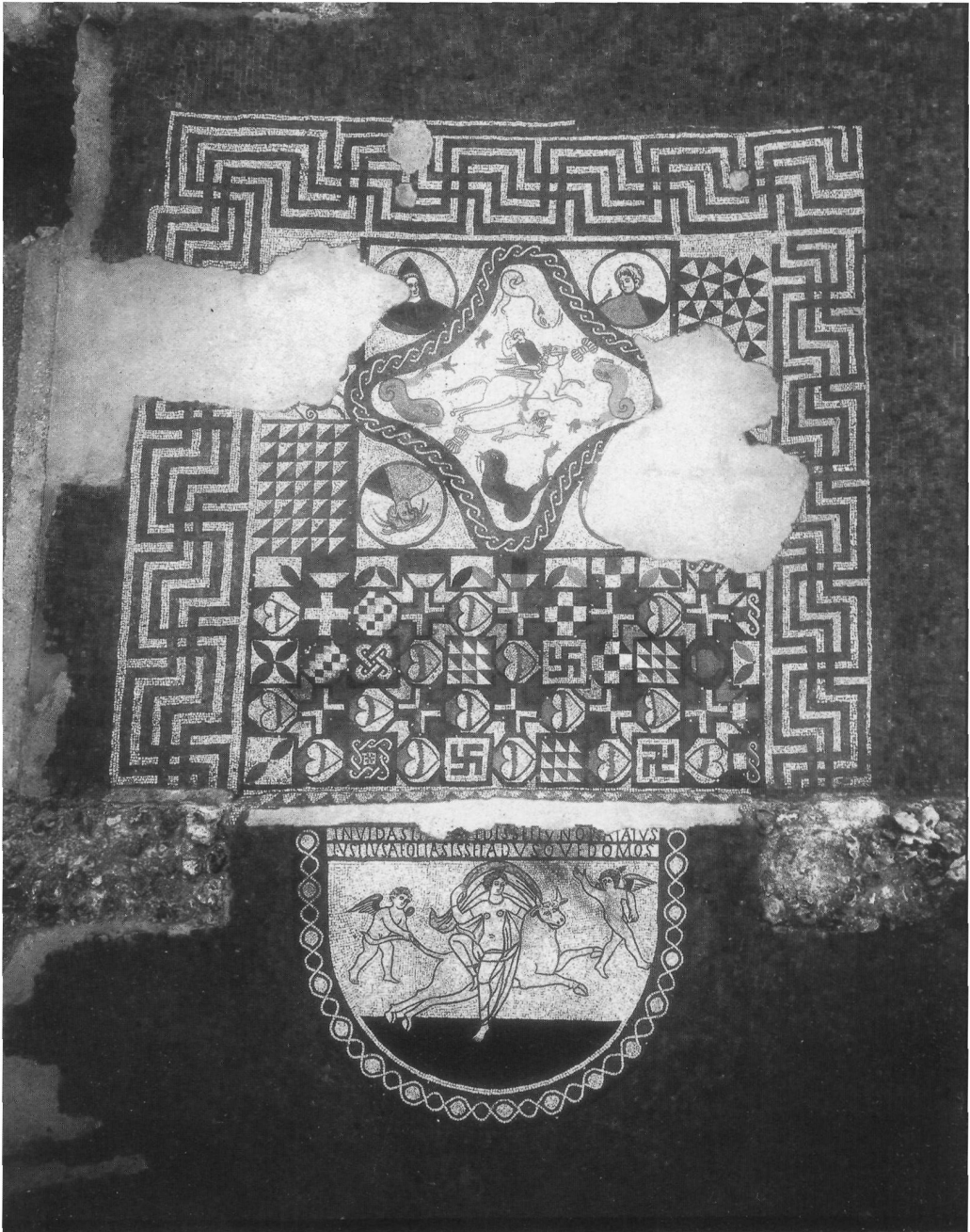
A. Blackhill Wood. Photograph taken from above showing tower posts and floor area. (p. 276)



(Crown copyright: Historic Scotland)

B. Blackhill Wood. Photograph of oven in Section E. (p. 277)

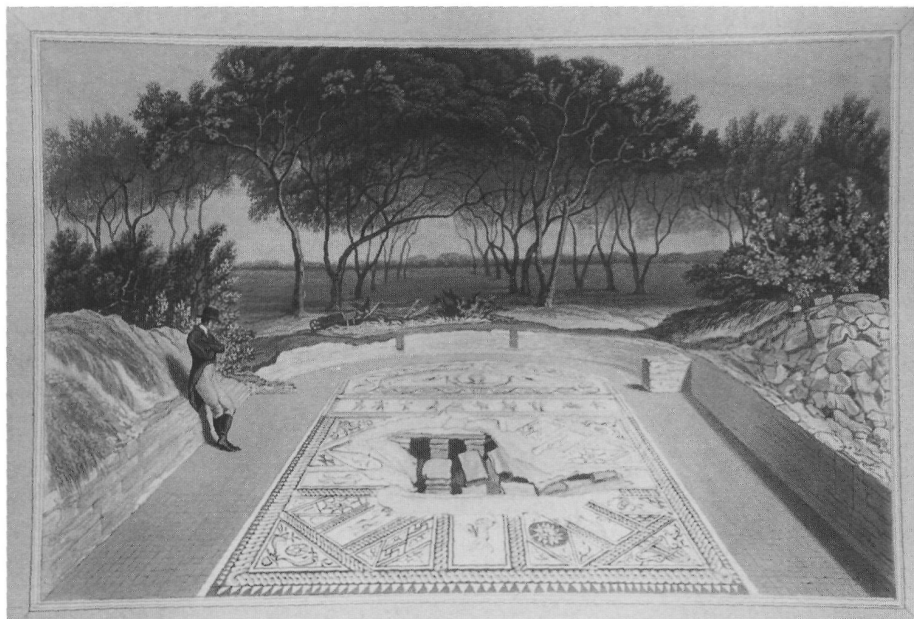
PLATE VI



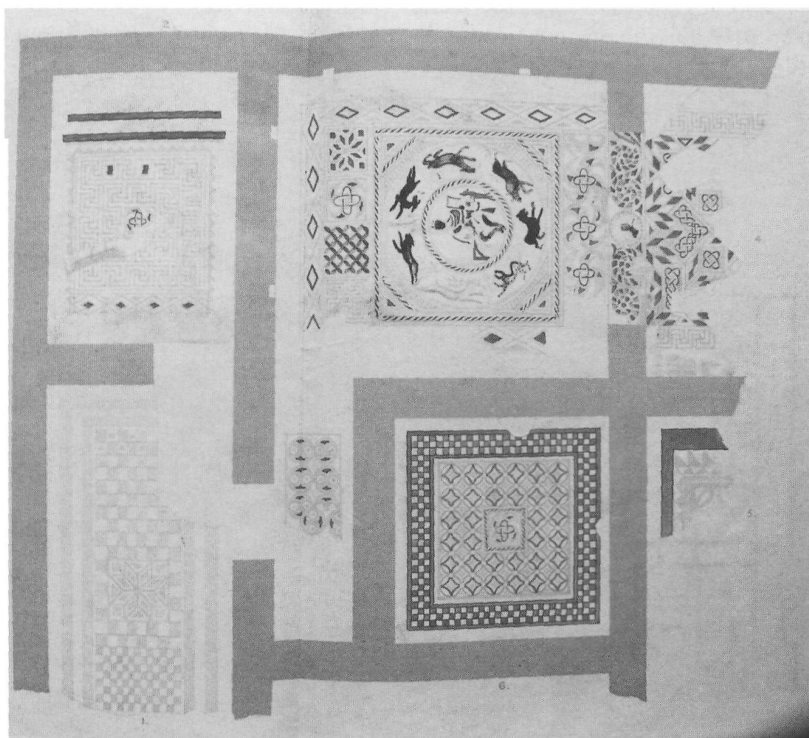
(Photo: English Heritage Photographic Library)

Lullingstone villa: mosaic pavement in Rooms 12/13 — Europa and the Bull; Bellerophon and the Chimaera. (p. 299)

PLATE VII



A. Bignor villa: mosaic pavement in Room 3 — Venus (S. Lysons, *Reliquiae Britannico-Romanae* III, frontispiece). (p. 296)



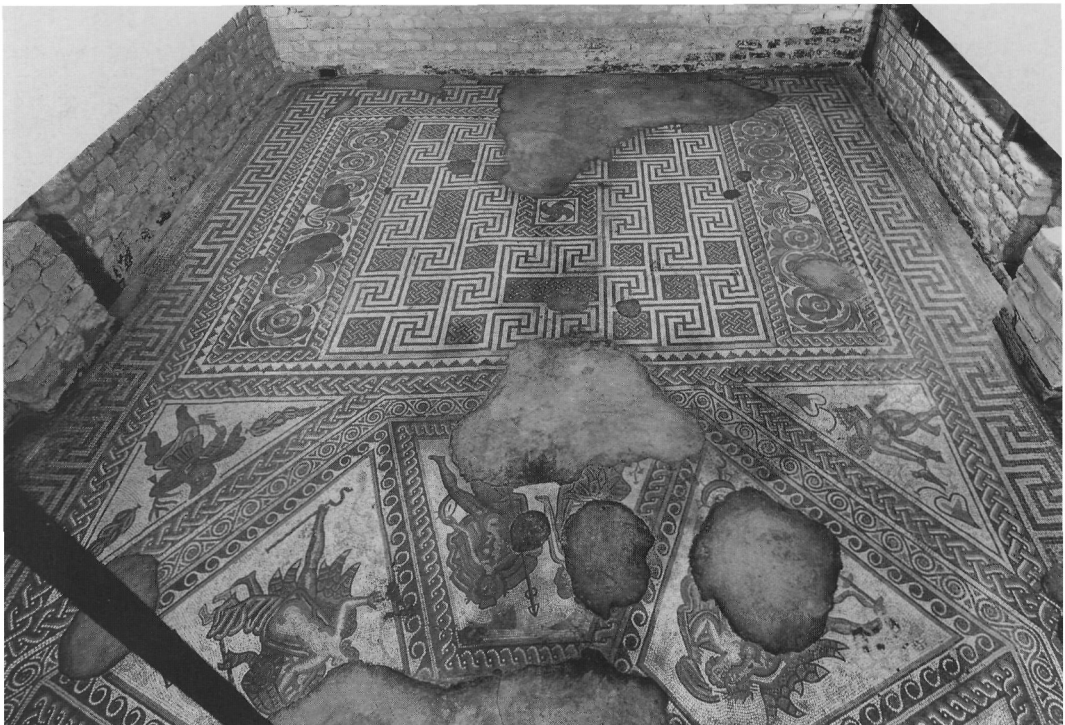
(Coloured lithograph, by kind permission of Bristol City Council Reference Library)
B. Newton St Loe villa: mosaic pavement in bipartite room — Orpheus. (p. 302)

PLATE VIII



(Photo: Bill Putnam, copyright Bournemouth University)

A. Dewlish villa: mosaic pavement in Room 11 — candelabrum motif and hunting scenes. (p. 299)



(Photo: RCHME. Crown copyright, BB70/3889)

B. Chedworth villa: mosaic pavement in Room 5 — Bacchic couples and Seasons. (p.302)

PLATE IX



(Reproduction of postcard by kind permission of Mr J.R. Tupper, Proprietor)

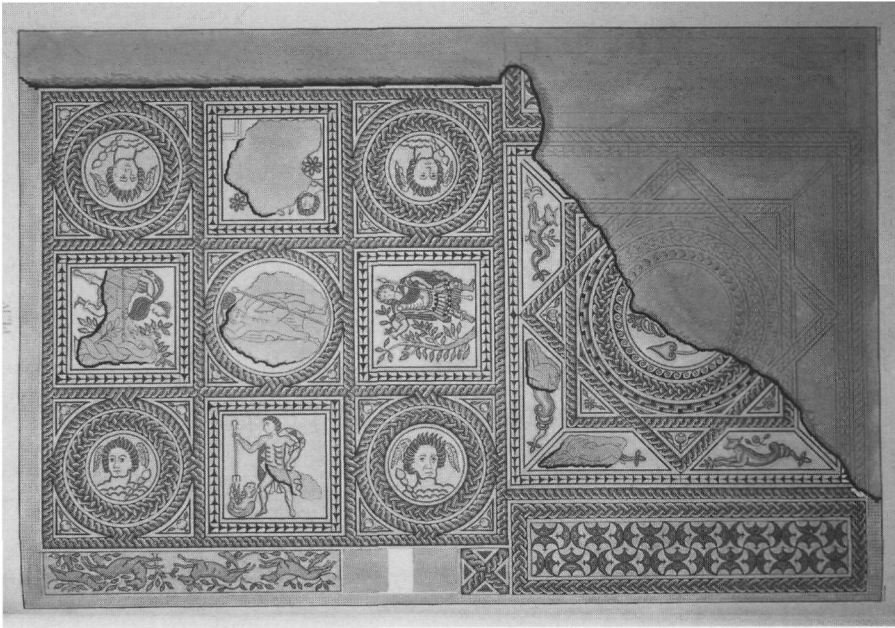
A. Bignor villa: mosaic pavement in Room 7 — Ganymede and the Eagle; dancing maenads. (p. 303)



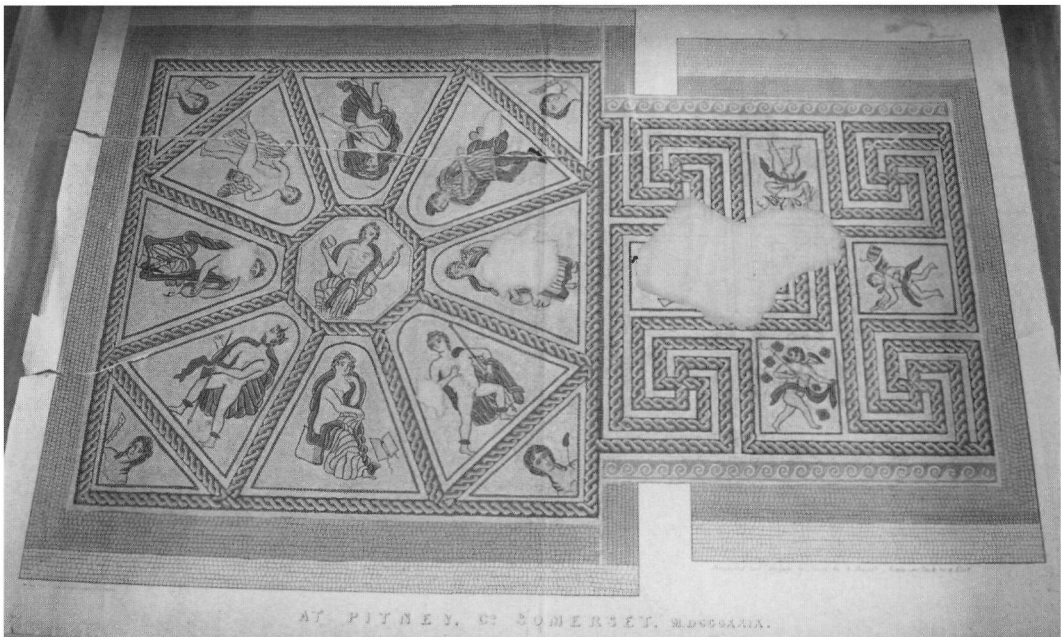
(By kind permission of the Trustees of the Oglander Roman Trust)

B. Brading villa: mosaic pavement in Room 11 — Medusa, mythological couples, Seasons and astronomer. (p. 307)

PLATE X



A. Frampton villa: mosaic pavement in Room A — Bacchus, Venus and mythological scenes (S. Lysons, *Reliquiae Britannico-Romanæ* 1, iii, pl. IV). (p. 304)



AT PITNEY, CO. SOMERSET, MONS. CXXXIX.

(Coloured lithograph, by kind permission of Somerset Archaeological and Natural History Society)
B. Pitney villa: mosaic pavement in Room A — Bacchus, mythological couples and Seasons. (p. 305)

PLATE XI



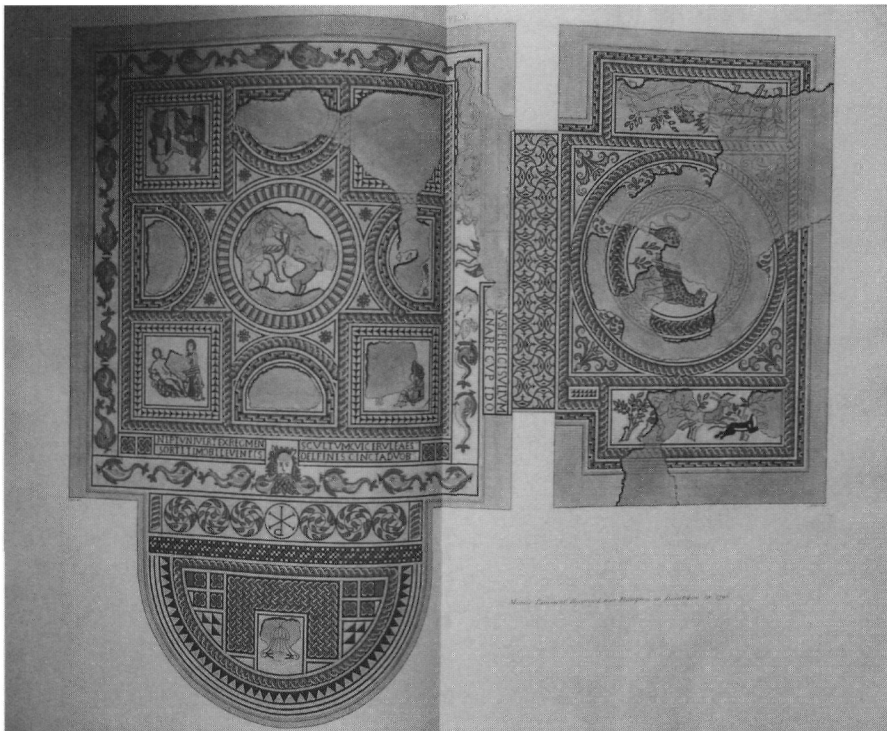
(Photo: RCHME, Crown copyright, CC71/603)
Hinton St Mary villa: mosaic pavement in bipartite room — bust with Chi-Rho, Bellerophon and the Chimaera. (p. 308)

PLATE XII

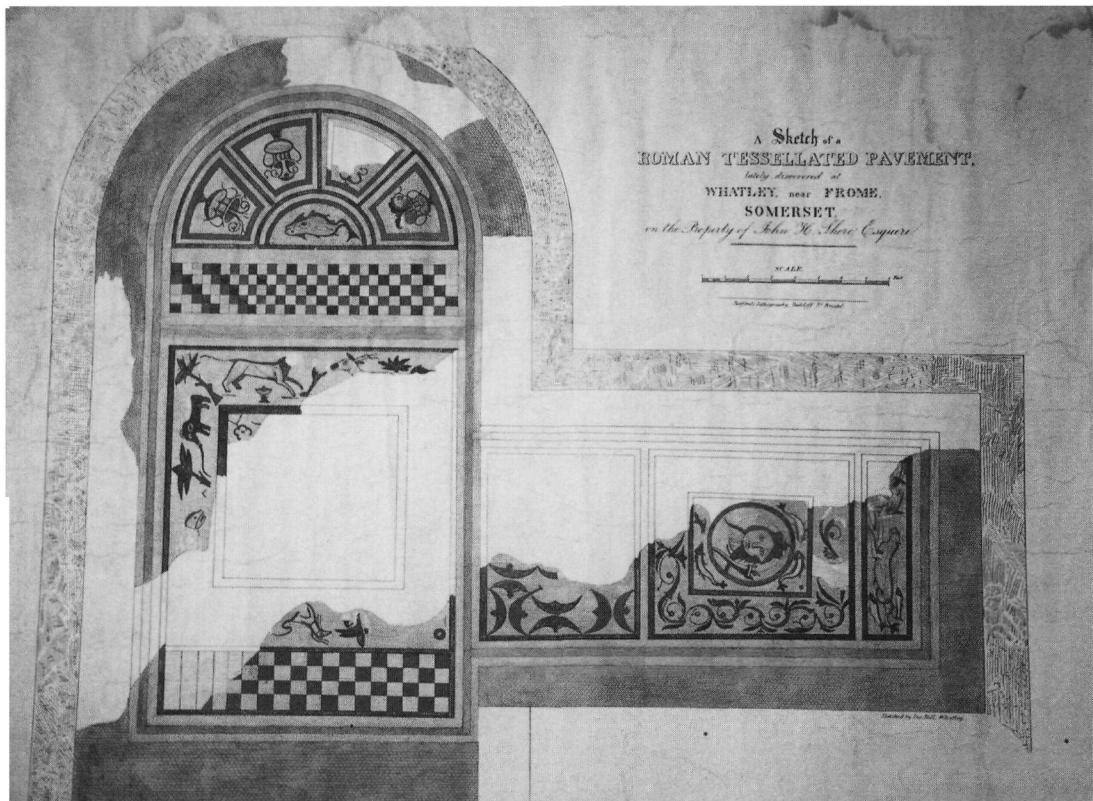


(Photo: Kingston upon Hull City Museums)

Rudston villa: mosaic pavement from House 8 — Victorious Charioteer. (p. 310)

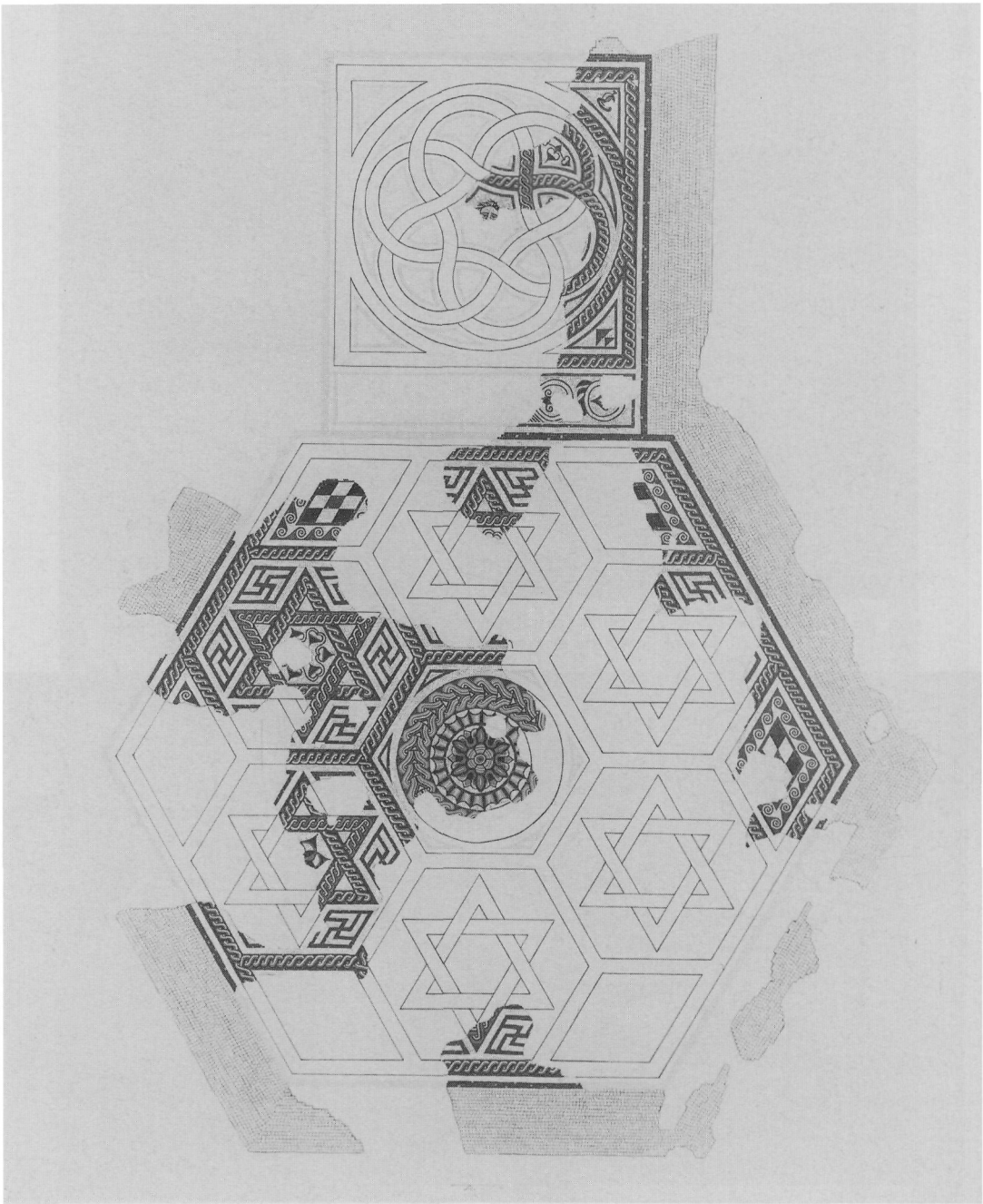


A. Frampton villa: mosaic pavement from Room B — Bacchus; Bellerophon and the Chimaera
(S. Lysons, *Reliquiae Britannico-Romanae* I, iii, pl. V). (p. 312)



(Coloured lithograph, by kind permission of Somerset Archaeological and Natural History Society)
B. Whatley villa: mosaic pavement from tripartite room — presumed Orpheus; bust with cornucopia. (p. 313)

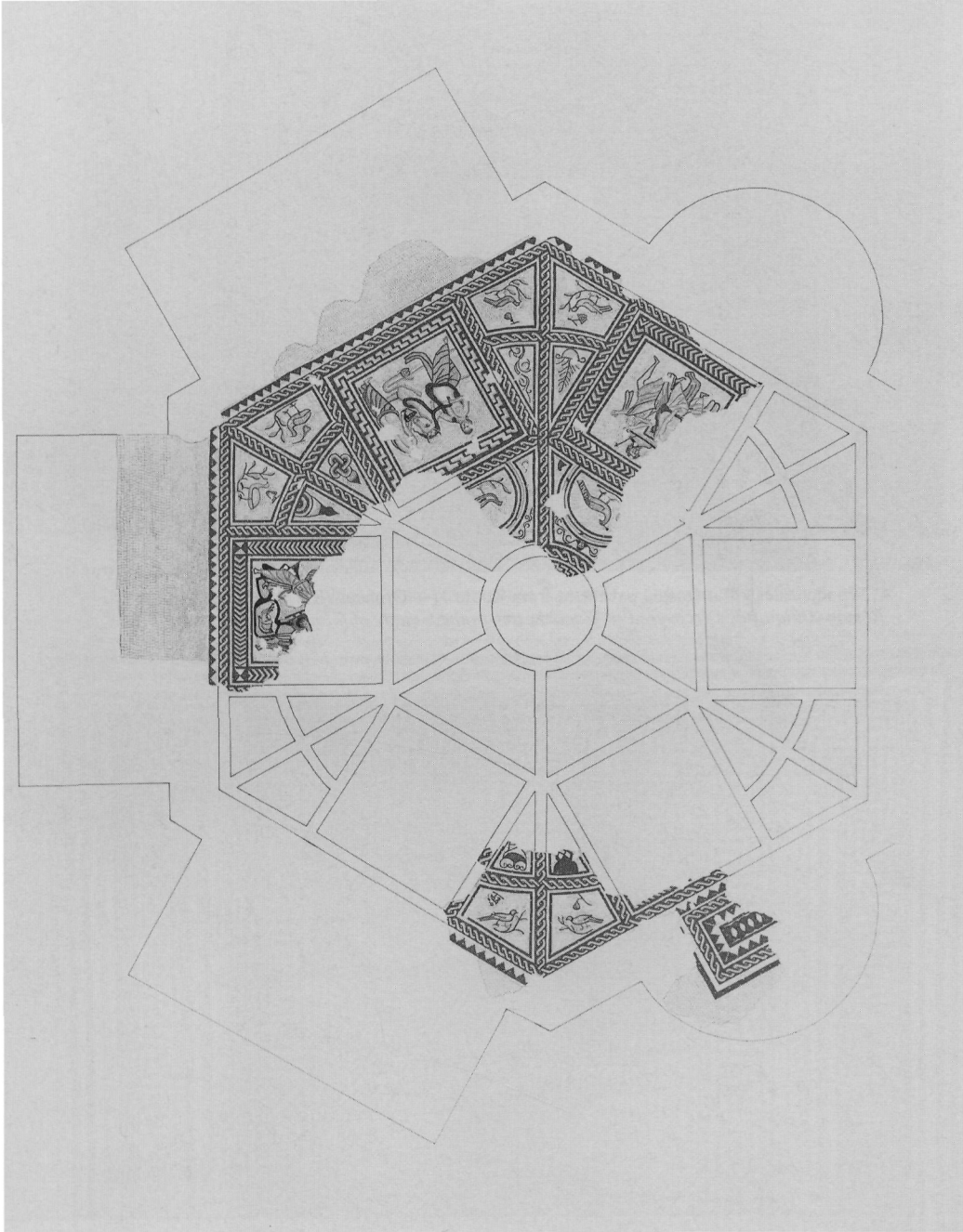
PLATE XIV



(Painting by Stephen Cosh, copyright S.R. Cosh)

Keynsham villa: mosaic pavement from Rooms J/K — Medusa. (p. 315)

PLATE XV

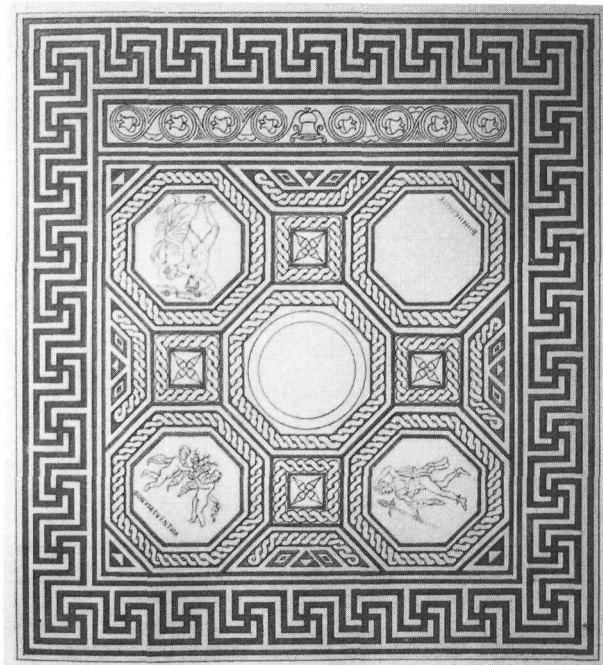


(Painting by Stephen Cosh, copyright S.R. Cosh)
Keynsham villa: mosaic pavement from Room W — mythological scenes. (p. 315)

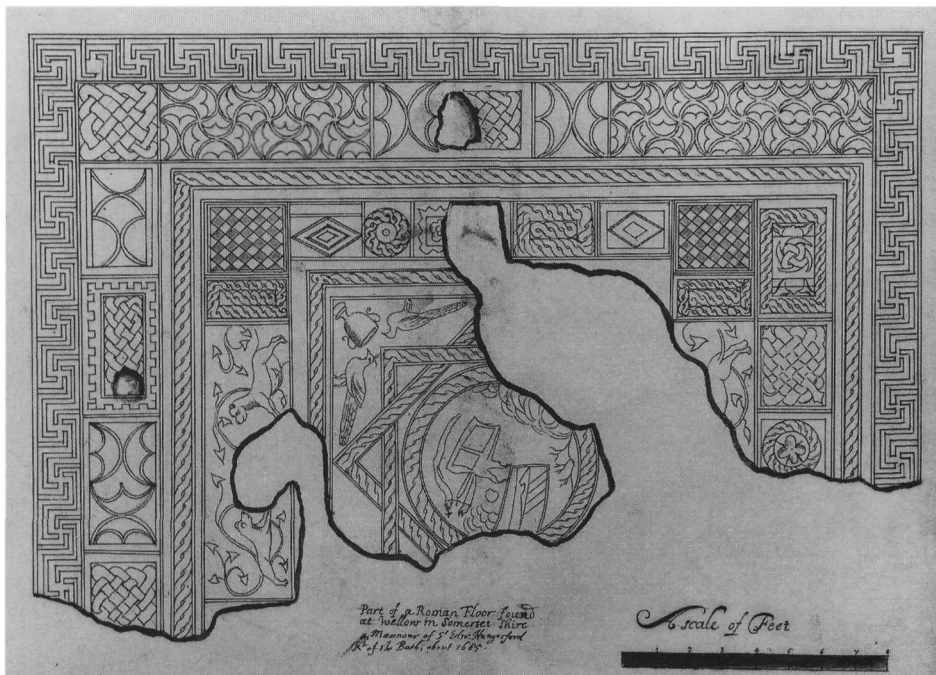
PLATE XVI



A. Woodchester villa: mosaic pavement from Room 1 — Orpheus (S. Lysons, *An Account of Roman Antiquities Discovered at Woodchester in the County of Gloucester*, pl. x). (p. 316)

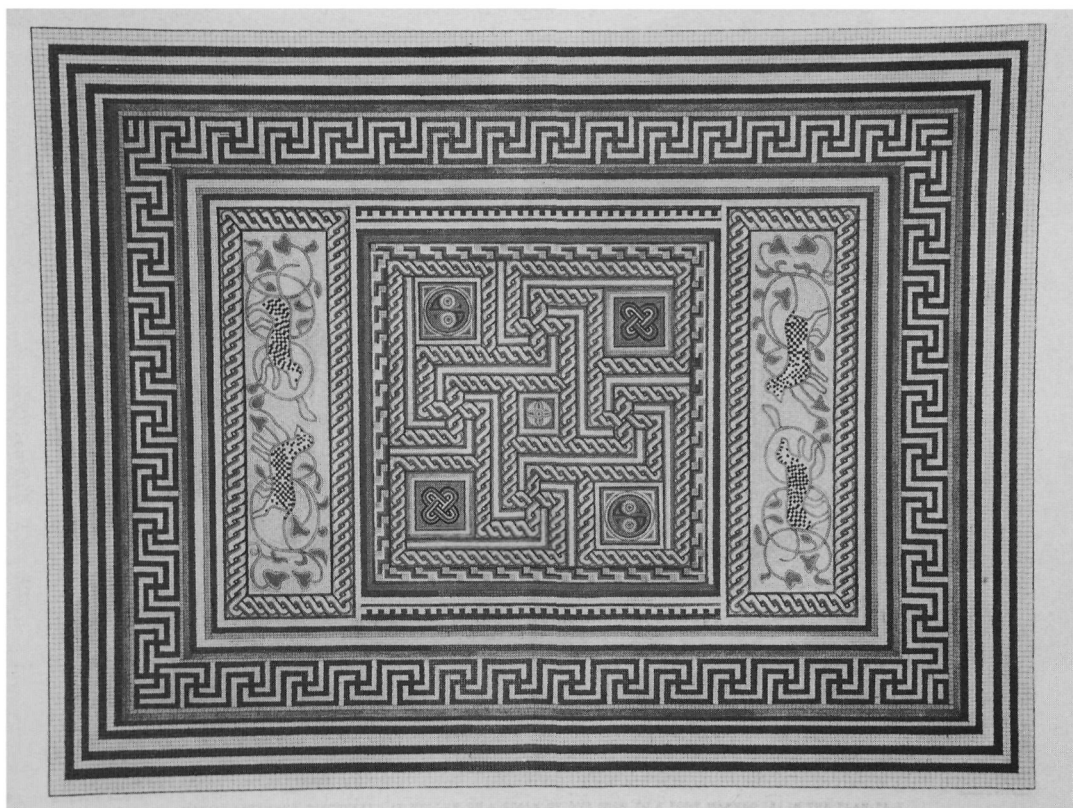


B. Woodchester villa: mosaic pavement in Room 10 — 'Bonus Eventus' mosaic (S. Lysons, *Reliquiae Britannico-Romanae* II, i, pl. XXIII). (p. 316)



(Drawing by John Aubrey, *Monumenta Britannica*, Bodleian Library, Oxford, MS. Top. Gen. c. 25, fol. 102a^r)

A. Wellow villa: mosaic pavement in Room A — Orpheus. (p. 318)



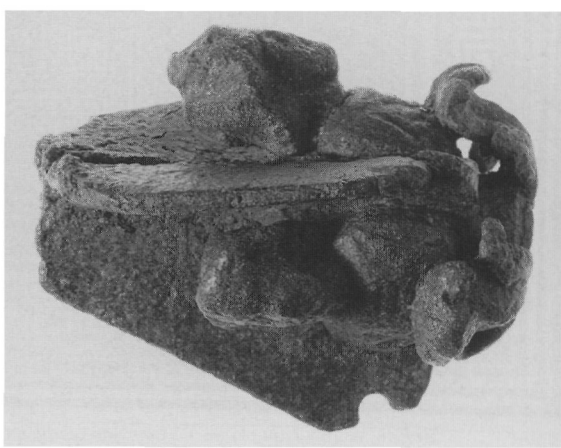
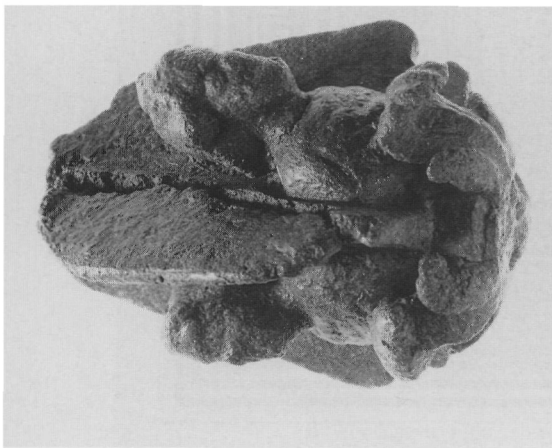
(Coloured engraving, by kind permission of Somerset Archaeological and Natural History Society)

B. Wellow villa: mosaic pavement in Room B — confronted felines. (p. 318)

PLATE XVIII

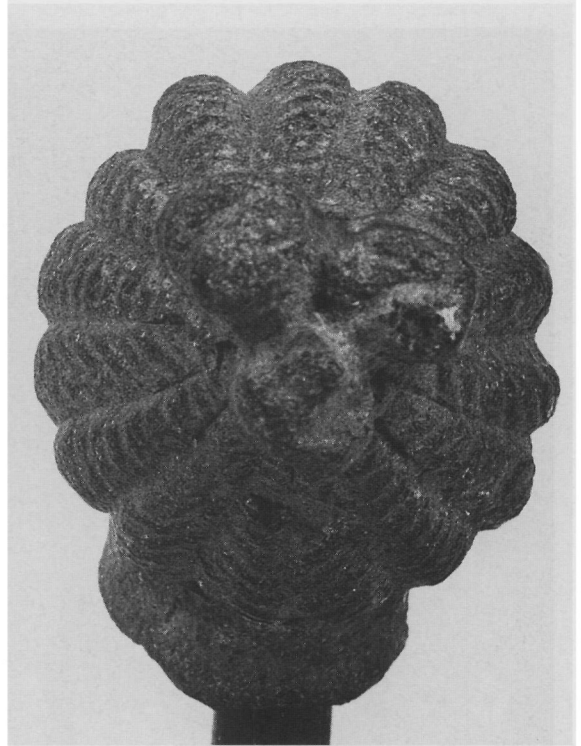


(Photo by permission of the National Museum of Wales)
B. A bronze figurine of Hercules from St Paul's Churchyard, London. Scale 2:1. (p. 363)



(Photo: R. Wilkins, FSA,
Institute of Archaeology, Oxford)
A. Sceptre-head for the Matres cult from
Aldworth, Berkshire. Scale 3:2. (p. 358)

PLATE XIX



(Photo: E.C. Paine Ltd)

Bust of Diana from Aldworth, Berkshire. Scale 2:1. (p. 361)

PLATE XX



A Roman relief of Mercury and Minerva from Aldsworth, Gloucestershire. Scale 1:2. (p. 362)

PLATE XXI



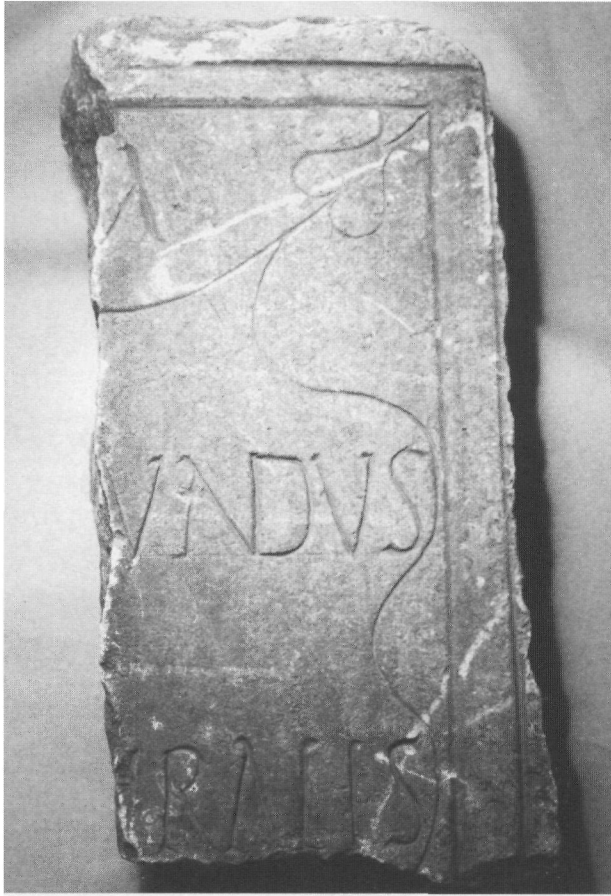
(Photo: National Museums of Scotland)

A. Statuette of Jupiter from Peebles (p. 384). Scale 1:1.



(Photo: Carlisle Archaeology Ltd)

B. Carlisle: the turf and timber rampart (indicated by the ranging poles) on the western side of the Flavian fort; facing south. To the left is the later Roman stone wall, and to the right is the medieval city wall. (p. 393)



(Photo: Mark Vine)

A. Wool: fragment of a tombstone (p. 433, No. 2), 0.21 m wide.



(Photo: Tyne and Wear Museums)

B. Hadrian's Wall, Wall Mile 22 (p. 436, No. 5), 0.35 m wide.



(Photo: Museum of London)

A. London. Fragment of an amphora with painted inscription (p. 440, No. 32).



(Photo: Institute of Archaeology, London)

B. Colchester. Fragment of an amphora with painted inscription (p. 438, No. 19).

PLATE XXIV



(Photo: Bonhams)

Inscribed altar (p. 448, *Alienum*), 0.17 m wide.

BRITANNIA MONOGRAPHS ISSN 0953-542X

Skeleton Green: A Late Iron Age and Romano-British Site No. 2
Clive Partridge 1981, 359 pp., 15 pls, paperback ISBN 0 907764 00 2 £6/US\$12/€12

Silchester: Excavations on the Defences 1974-80 No. 5
Michael Fulford 1984, 301 pp., 91 figs, paperback ISBN 0 907764 03 7 £9/US\$18/€18

Baldock: The Excavation of a Roman and Pre-Roman Settlement, 1968-72 No. 7
I.M. Stead and Valery Rigby
1986, 435 pp., 160 figs, paperback ISBN 0 907764 16 9 £10/US\$20/€20

Longthorpe II: The Military Works Depot: an Episode in Landscape History No. 8
G.B. Dannell and J.P. Wild
1987, 206 pp., 75 illus., paperback ISBN 0 907764 08 8 £8/US\$16/€16

Strageath: Excavations within the Roman Fort, 1973-86 No. 9
S.S. Frere and J.J. Wilkes 1989, 276 pp., 136 figs, 40 pls, paperback ISBN 0 907764 11 8 £10/US\$20/€20

The Silchester Amphitheatre: Excavations of 1979-85 No. 10
Michael Fulford 1989, 197 pp., 84 figs, 40 pls, paperback ISBN 0 907664 12 6 £10/US\$20/€20

Leucarum: Excavations at the Roman Auxiliary Fort at Loughor, W. Glamorgan, 1982-4 & 1987-8 No.12
A.G. Marvell & H.S. Owen-John 1997, 448 pp. incl. 155 figs, 26 pls, paperback ISBN 0 907664 21 5 £45/US\$90/€90

Roman Inscribed and Sculptured Stones in the Hunterian Museum, University of Glasgow No. 13
Lawrence Keppie 1998, 156 pp. incl. 100 line drawings, 24 pls, paperback ISBN 0 907764 22 3 £36/US\$72/€72

The Excavation of a Ceremonial Site at Folly Lane, Verulamium No. 14
Rosalind Niblett 1999, 456 pp. incl. 121 figs and 62 pls, paperback ISBN 0 907764 23 1 £45/US\$90/€90

Late Iron Age and Roman Silchester: Excavations on the Site of the Forum-Basilica No. 15
Michael Fulford and Jane Timby 2000, 613 pp., 242 figs, 113 tables, hardback ISBN 0 907764 24 X £52/US\$104/€104

The Caerleon Canabae: Excavations in the Civil Settlement No. 16
Edith Evans et al. 2000, 537 pp., 125 figs, 33 pls, paperback ISBN 0 907764 25 8 £52/US\$104/€104

Cannington Cemetery No. 17
P. Rahtz, S. Hirst & S.M. Wright 2000, 516 pp., 256 figs, 70 tables, paperback ISBN 0 907764 26 6 £56/US\$112/€112

JOURNAL OF ROMAN STUDIES MONOGRAPHS ISSN 0951-6549

Aphrodisias and Rome No. 1
Joyce Reynolds 1982, 214 pp., 32 pls, hardback ISBN 0 907764 00 2 £15/US\$30/€30

Excavations at Sabratha 1948-1951 No. 2
Philip M. Kenrick 1986, 326 pp., 64 pls, hardback ISBN 0 907764 07 X £15/US\$30/€30

Monumenta Asiae Minoris Antiqua (MAMA) IX: Monuments from the Aezanitis No. 4
Ed. B. Levick, S. Mitchell, et al. 1988, 209 pp., 48 pls, 2 maps, hardback ISBN 0 907764 10 X £15/US\$30/€30

Performers and Partisans at Aphrodisias No. 6
Charlotte Roueché 1993, 285 pp., 24 pls, hardback ISBN 0 907764 17 7 £34/US\$68/€68

Monumenta Asiae Minoris Antiqua (MAMA) X No. 7
Ed. B. Levick and S. Mitchell 1993, 248 pp., 56 pls, hardback ISBN 0 907764 18 5 £40/US\$80/€80
MAMA IX and MAMA X Nos 4 and 7 together £45/€90/€90

Nicopolis ad Istrum: a Roman, Late Roman & Early Byzantine City: Excavations 1985-92. Vol.1
No.8 Andrew Poulter 1995, 331 pp. incl. 118 figs, 46 pls, 3 fold-outs, hardback ISBN 0 907764 20 7 £42/US\$84/€84

The Writings of the Roman Land Surveyors No. 9
Brian Campbell 2000, c. 580 pp., incl. 54 pp. of line drawings, 6 pls, 1 map, hardback ISBN 0 907764 28 2
Till 30 June 2001: £58/US\$116/€116; thereafter: £78/US\$156/€156

Britannia monos 1, 3, 4, 6 and 11, and JRS monos 3 and 5 are out of print

The prices above apply only to orders made direct to:

The Roman Society, Senate House, Malet Street, London WC1E 7HU

Prices include postage & packing (overseas by surface mail). Cash with order or pro-forma invoice

Payment by cheque to the Roman Society or by Giro transfer to account no. 587434201



Published by the Society for the Promotion of Roman Studies
Senate House, Malet Street, London WC1E 7HU