

**PERIODICALS
BACK NUMBERS**

Journal of Roman Studies

ISSN 0075-4358

LVIII, LX–LXIII, LXV–LXVI,
LXXI–LXXVIII (1968, 1970–3,
1975–6, 1981–8): £15/US \$30
(individual members), £16/US \$32
(institutional members), £21/US \$42
(non-members & booksellers) — all
prices per vol.
Indexes to vols XXI–XL &
XLI–LX (1931–50 & 1951–70):
£5/US \$10 each.

Britannia ISSN 0068-113X

I–X (1970–9): £7.50/US \$15
(individual members), £8/US \$16 •
(institutional members), £10/US \$20
(non-members & booksellers)
XI–XIV (1980–3): £12/US \$24
(individual members), £13/US \$26
(institutional members), £18/US \$36
(non-members & booksellers)
XV–XIX (1984–8): £15/US \$30
(individual members), £16/US \$32
(institutional members), £21/US \$42
(non-members & booksellers) — all
prices per vol.

Index to vols I–X (1970–9):
£9/US \$18.

Complete set of vols I–X plus
index: £70/US \$140 (individual &
institutional members), £90/US \$180
(non-members & booksellers).

OFFPRINTS

Journal of Roman Studies

LXVII (1977) *Air
Reconnaissance in Roman
Britain, 1973–76*
J. K. S. St Joseph £1.50/US \$3
LXIX (1979) *Elegiacs by
Gallus from Qasr Ibrim*
R. D. Anderson, P. J. Parsons
& R. G. M. Nisbet £3/US \$6
LXXVI (1986) *The Lex
Irnitana: A New Copy of the
Flavian Municipal Law*
(97 pp., 19 pls)
Julián González £8/US \$16

Britannia

I (1970) *The Roman Theatre
at Canterbury*
Sheppard Frere £2/US \$4
I (1970) *Roman Finds from
non-Roman Sites in Scotland*
Anne Robertson £2/US \$4
III (1972) *The Roman Fort at
Nanstallon, Cornwall*
Aileen Fox & William
Ravenhill £3/US \$6
X (1979) *Roman Timber
Military Gateways in Britain
and on the German Frontier*
W. H. Manning & I. R. Scott
£2/US \$4
XI (1980) *Excavations at the
Roman Fort at Lympne, Kent
1976–78*
Barry Cunliffe £1/US \$2

**ROMAN
SOCIETY
PUBLICATIONS**

XII (1981) *The Excavation of
a Romano-British Farmstead
and Cemetery on Bradley
Hill, Somerton, Somerset*
Roger Leech £1/US \$2
XIII (1982) *The Roman Villa
at Woodchester*
Giles Clarke £2/US \$4
The Bignor Villa
Sheppard Frere £2/US \$4
XIV (1983) *The Seasons in
Romano-British Mosaic
Pavements*
Roger Ling £2/US \$4
XX (1989) *The Numeri of the
Roman Imperial Army*
P. Southern £4.50/US \$9
*Roman Britain in 1969, 1972,
1973, 1975 and for every
year up to 1988*
per copy £3/US \$6

**For details of ordering
see inside back cover**

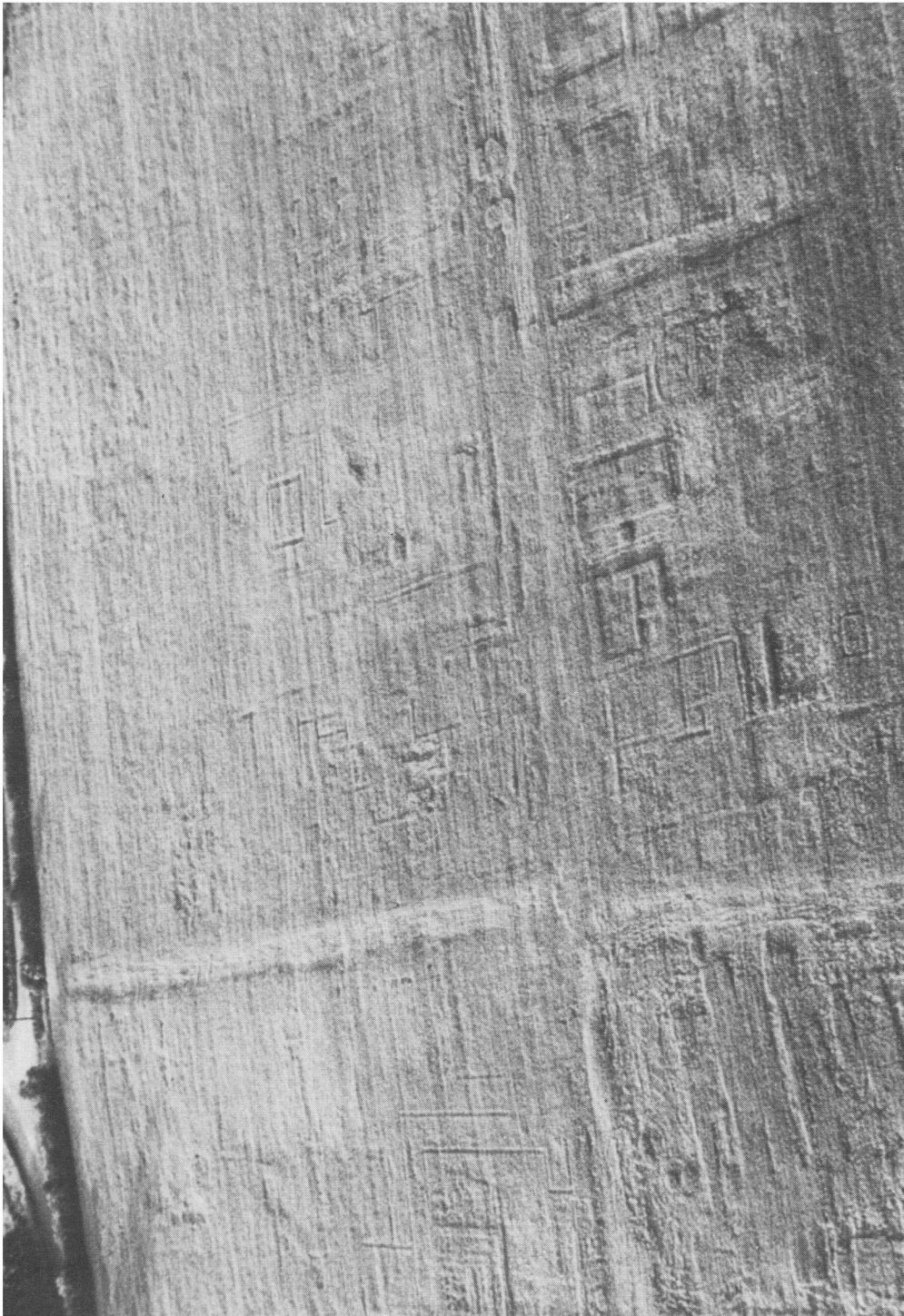
**SOCIETY FOR THE PROMOTION OF
ROMAN STUDIES
HUGH LAST AND DONALD ATKINSON
FUNDS**

Applications for grants are invited for financial assistance towards the undertaking, completion or publication of work that relates to any of the general scholarly purposes of the Roman Society, which are to promote the study of the history, archaeology, literature and art of Italy and the Roman Empire, from the earliest times down to about A.D. 700. Normally this assistance will be given to applicants of post-doctoral status. Grants will not normally be made towards expenses incurred in the preparation of a doctoral or similar thesis.

Applications should be made before 15th January. They should be sent to the Secretary, Society for the Promotion of Roman Studies, 31–34, Gordon Square, London, WC1H 0PP from whom further particulars may be obtained.

PLATE SECTION

PLATE I



(Photo: C. Stantley)

Alchester, Oxon: Looking North. (p. 141).

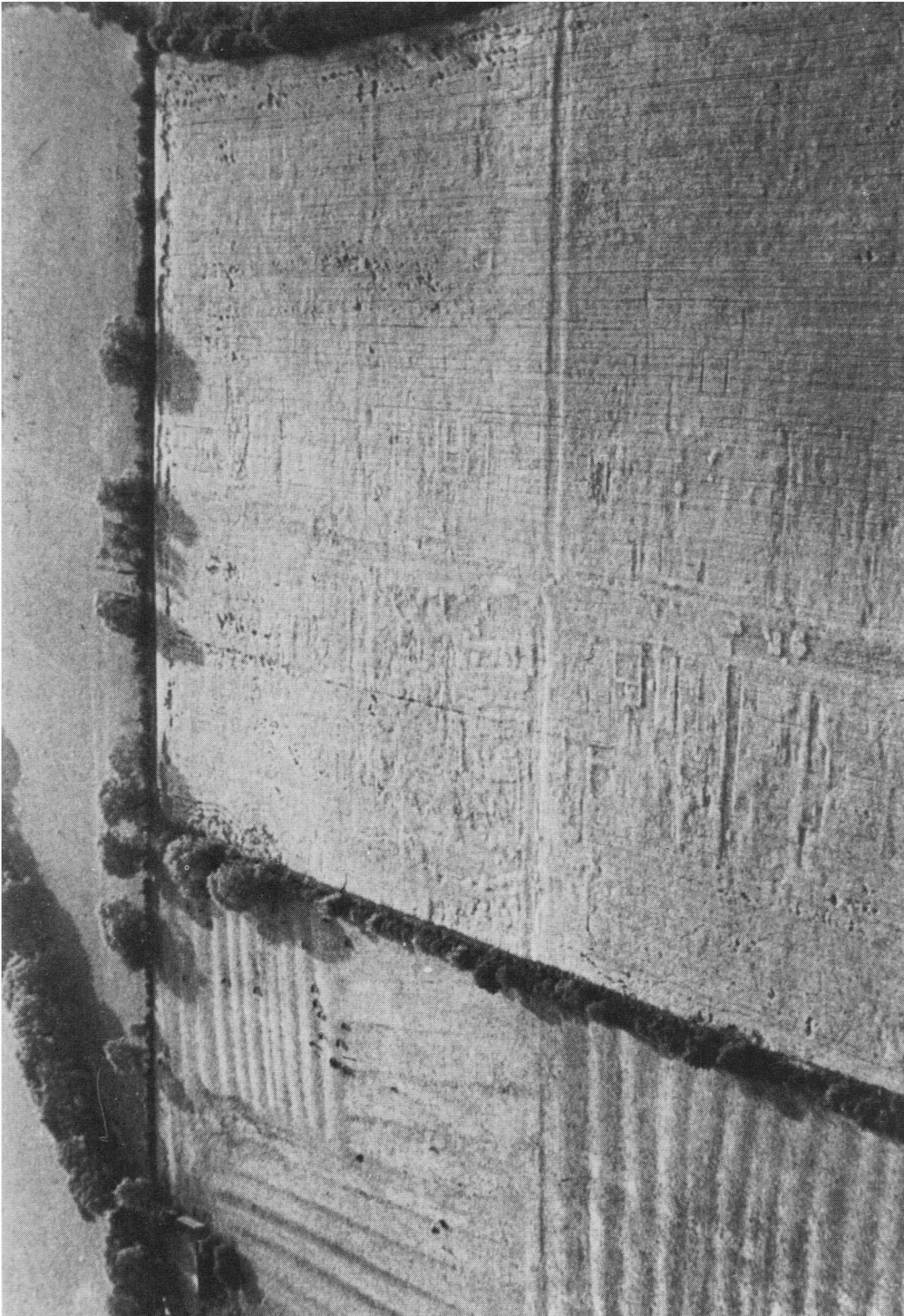
PLATE II



(Photo: C. Stanley)

Alchester, Oxon: Looking Northwest. (p. 141).

PLATE III



(Photo: C. Stanifey)

Alchester, Oxon: Looking west. (p. 141).

PLATE IV



(Copyright: English Heritage)

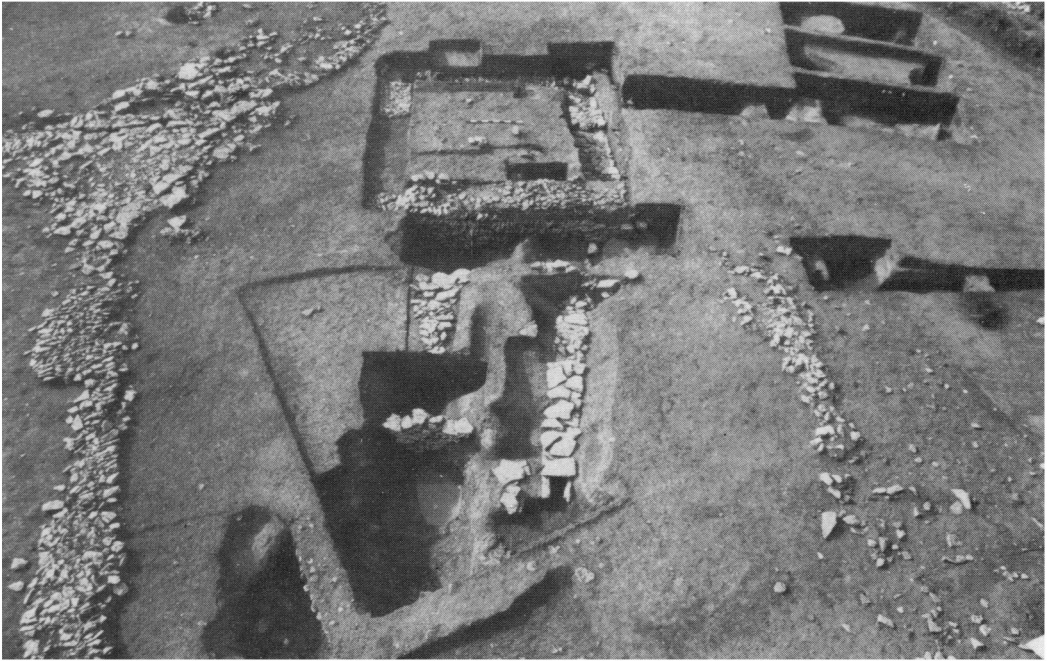
A. Stanwick: Temenos in Field I. (p. 156).



(Copyright: English Heritage)

B. Stanwick: View of 'Bailiff's House'. Looking west. (p. 160).

PLATE V



A. Stanwick: Water-tank in Enclosure D, Field 2 and associated culverts. (p. 160). *(Copyright: English Heritage)*



B. Stanwick: Large circular stone-built house in Field 3. (p. 160). *(Copyright: English Heritage)*

PLATE VI



(Copyright: English Heritage)

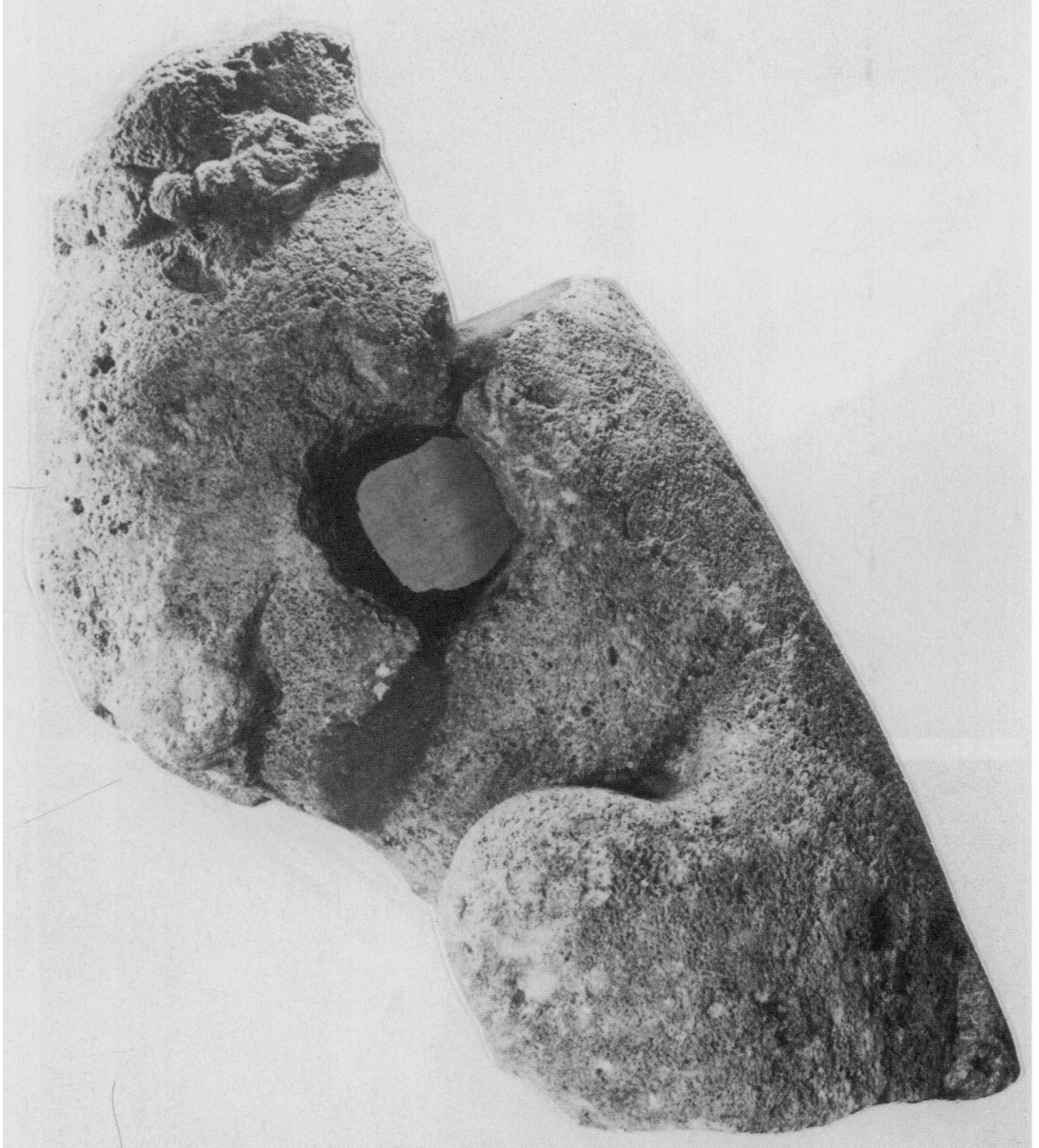
A. Stanwick: Worked bone eagle. (p. 165).



(Copyright: English Heritage)

B. Stanwick: Fragment of inscription. (p. 166).

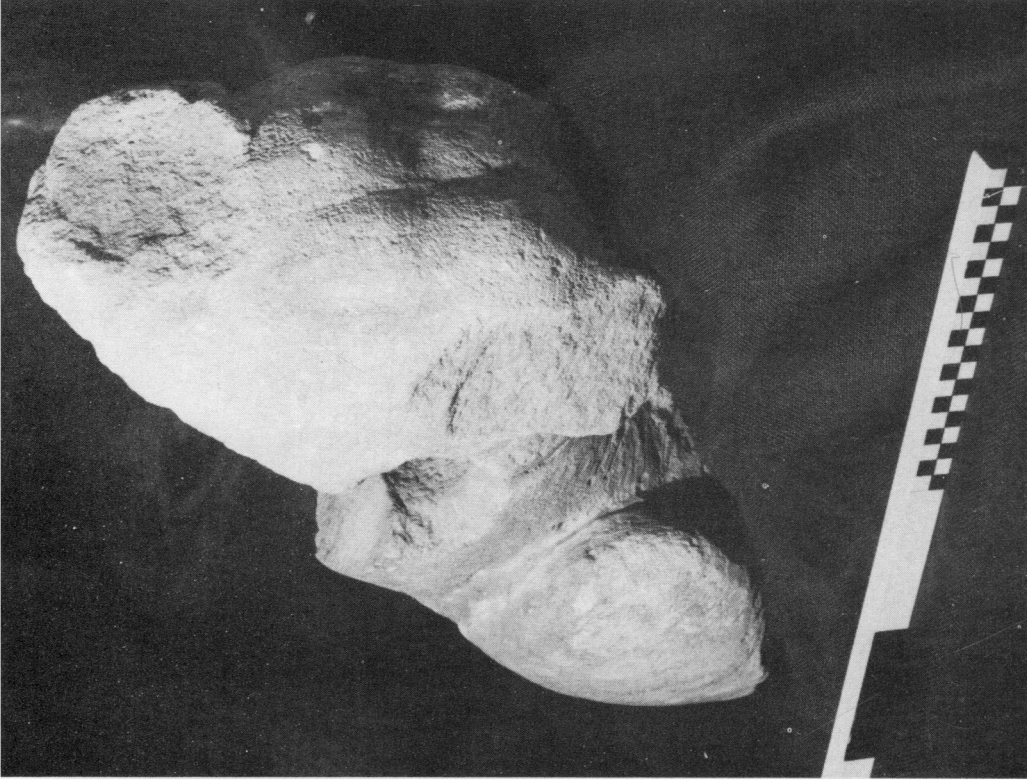
PLATE VII



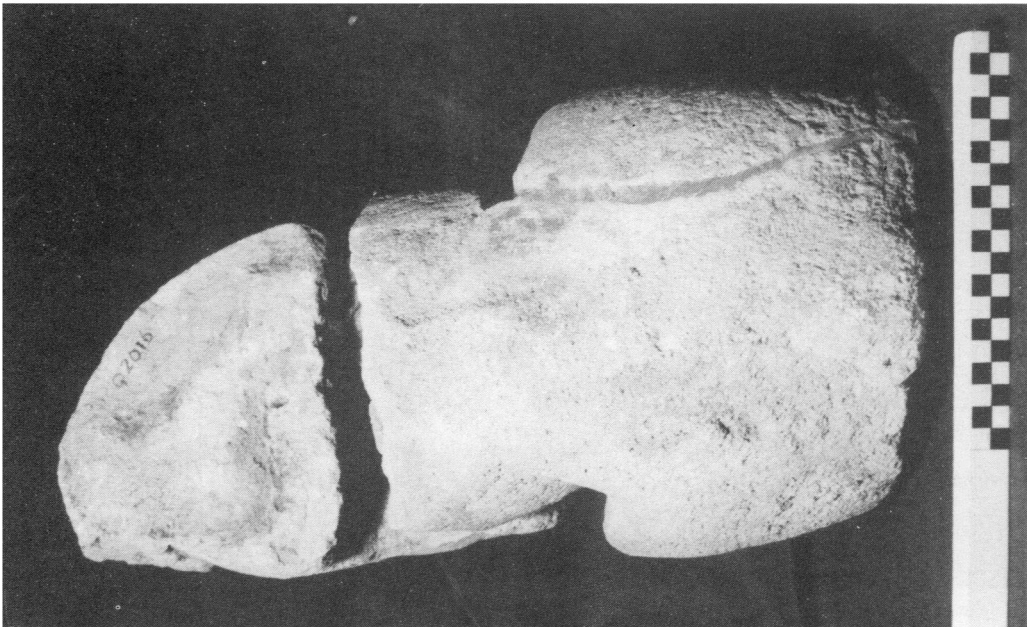
Left side of dog's torso. Pagans Hill temple-well, 1951. (p. 201).

(Photo: Studio Rahtz)

PLATE VIII



B. Pagans Hill: Right side of dog's torso showing shoulder musculature. (p. 201).
(Photo: City Museum, Bristol)

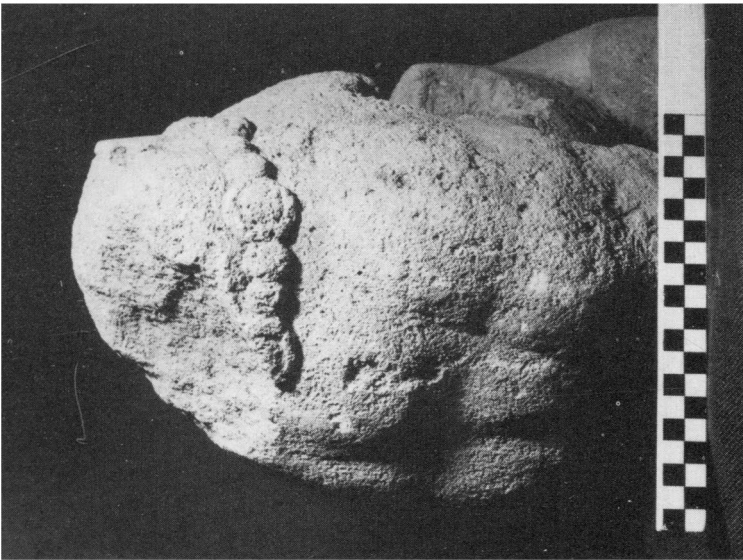


A. Pagans Hill: Back view of dog's torso showing inclination to left. (p. 201).
(Photo: City Museum, Bristol)

PLATE IX



B. Detail of the collar of a mastiff. Legionary Museum of Caerleon. (p. 205).



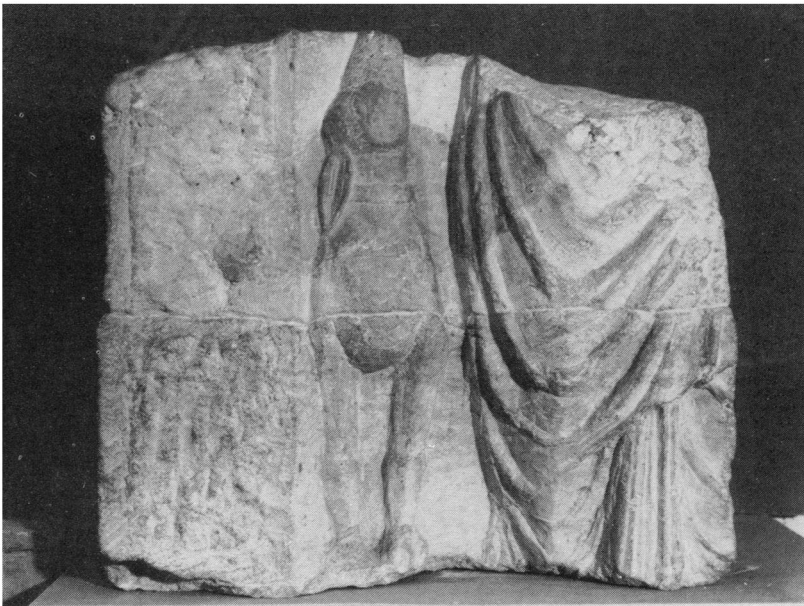
A. Pagans Hill: Close-up of dog's torso showing musculature and collar. (p. 201).

PLATE X



(Photo: British Museum)

A. Marble group; note posture and shoulder musculature. Rome, about first century A.D. (p. 205).



(Photo: City Museum, Bristol)

B. Part of a relief showing a standing female deity and adoring hound. Nettleton, Wilts. (p. 205).

PLATE XI

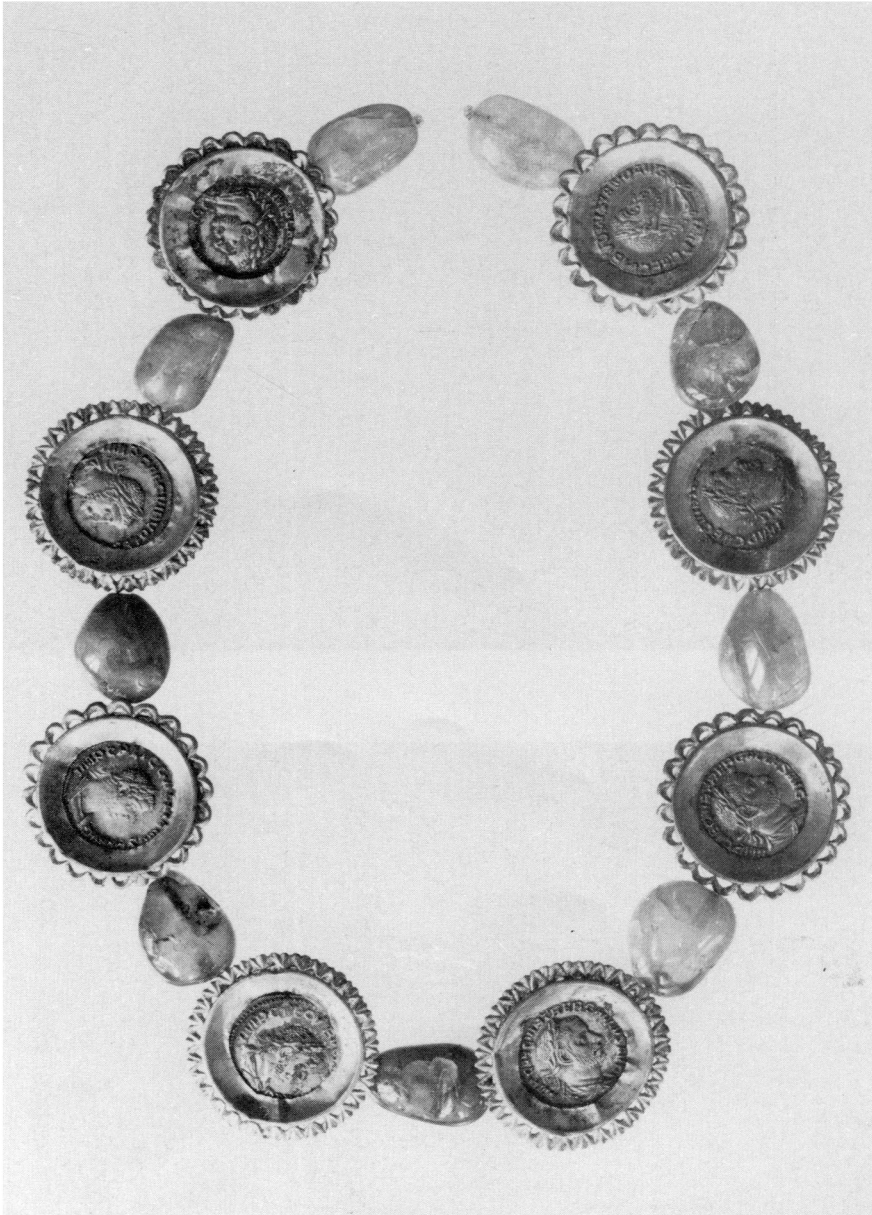


(Photo: M.J. Hammons, Museum of London)
B. Detail of the hound seated on the left side of the Southwark hunting-deity. (p. 205).



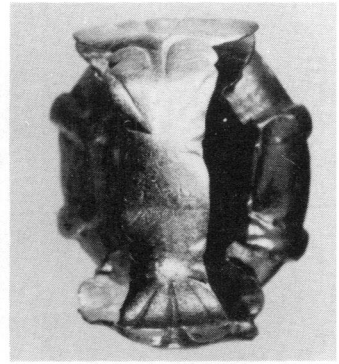
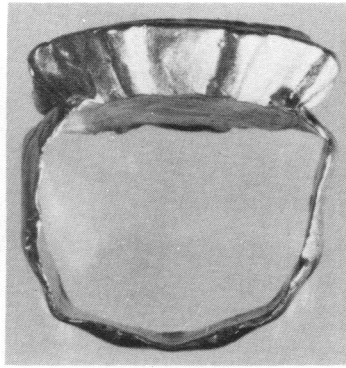
(Photo: M.J. Hammons, Museum of London)
A. Hunting-god wearing Phrygian cap; stag on his right, hound on his left. Southwark Cathedral. (p. 205).

PLATE XII

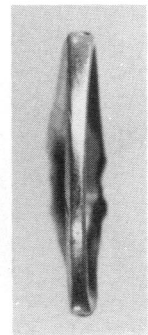
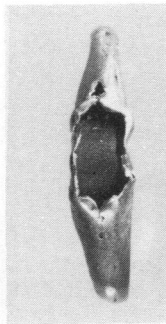


(Photo: Luckert; Copyright: Antiknmuseum, Staatliche Museen Preussischer, Kulturbesitz, Berlin)
Necklace consisting of *aurei* of Gallus, Volusian and Gallienus in contemporary gold settings, interspersed with emeralds and sapphires. Scale 1:1. (p. 206).

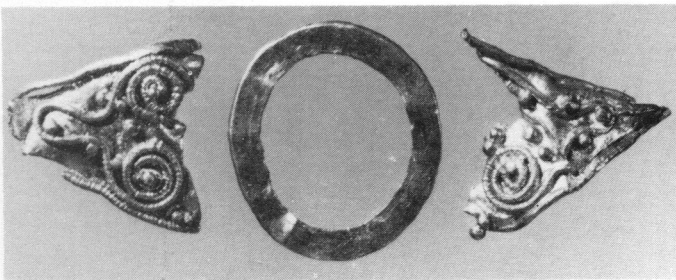
PLATE XIII



1



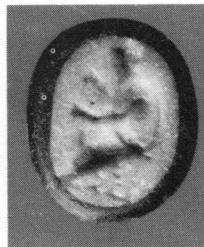
2



3



4a

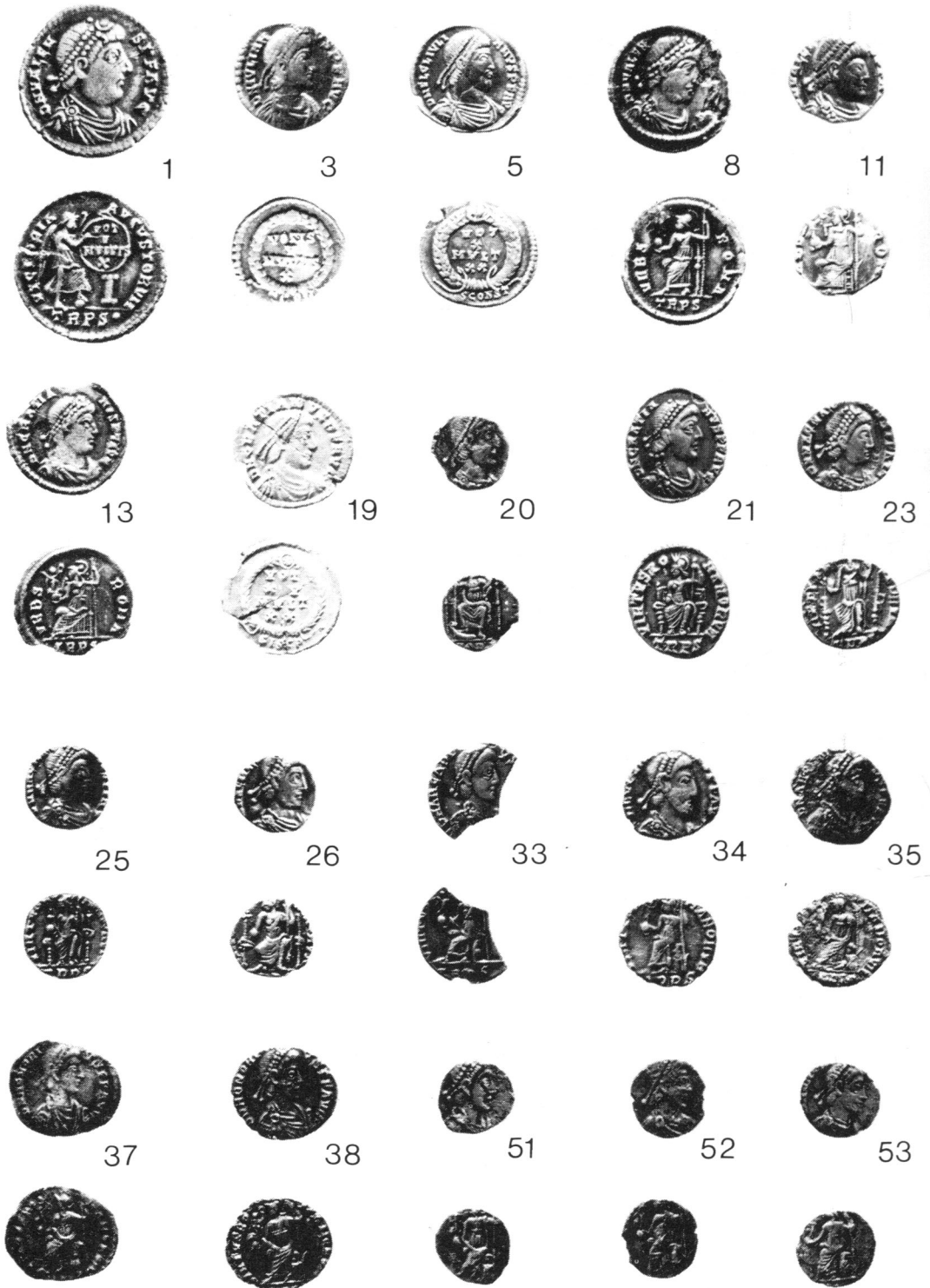


4b

(Photo: University of Reading)

Gold (Nos. 1-3) and silver (No. 4) finger-rings from Silchester, Hampshire. Scale 2:1. (p. 221).

PLATE XIV



Late Roman silver coins from Silchester, Hampshire. Scale 1:1. (p. 226).

(Photo: British Museum)

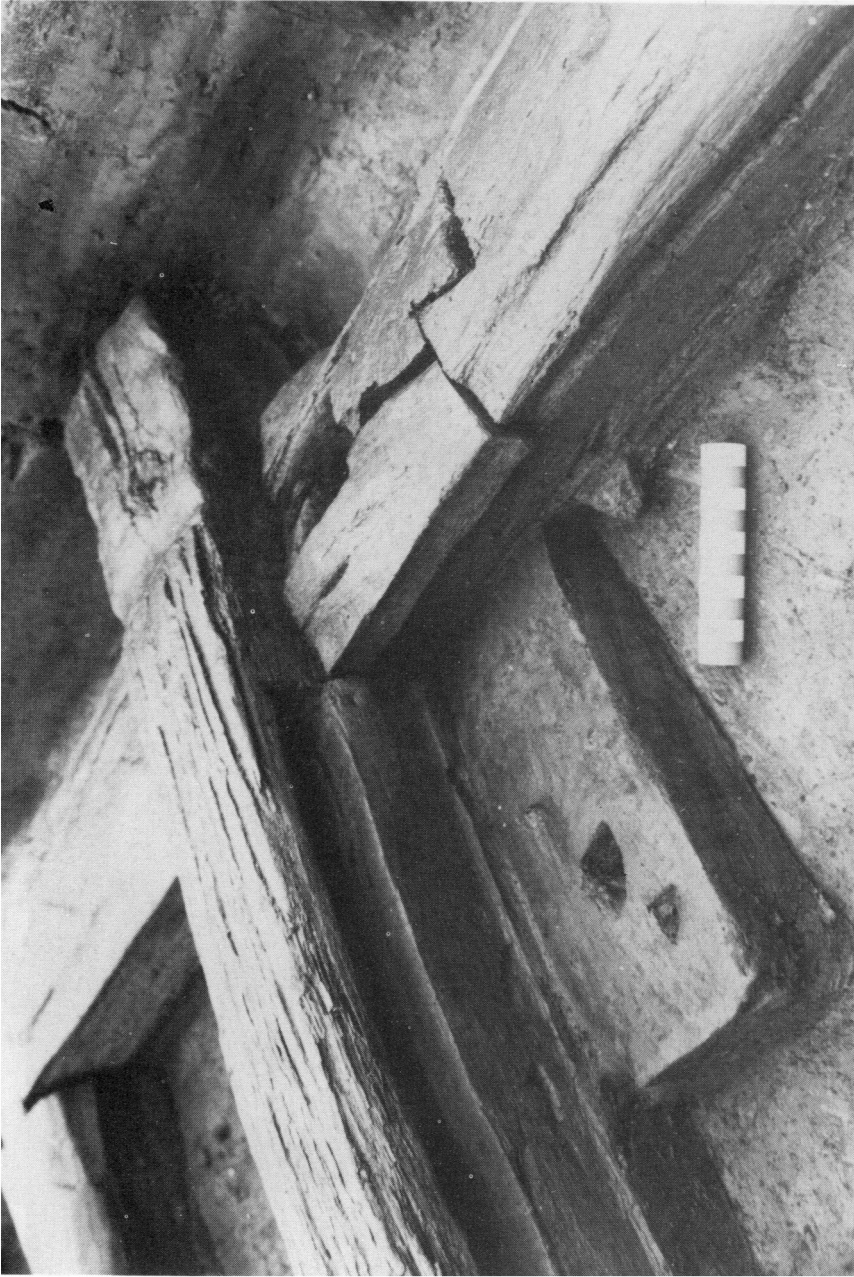
PLATE XV



Southwark: Timber building as initially uncovered. (p. 229).

(Photo: Museum of London)

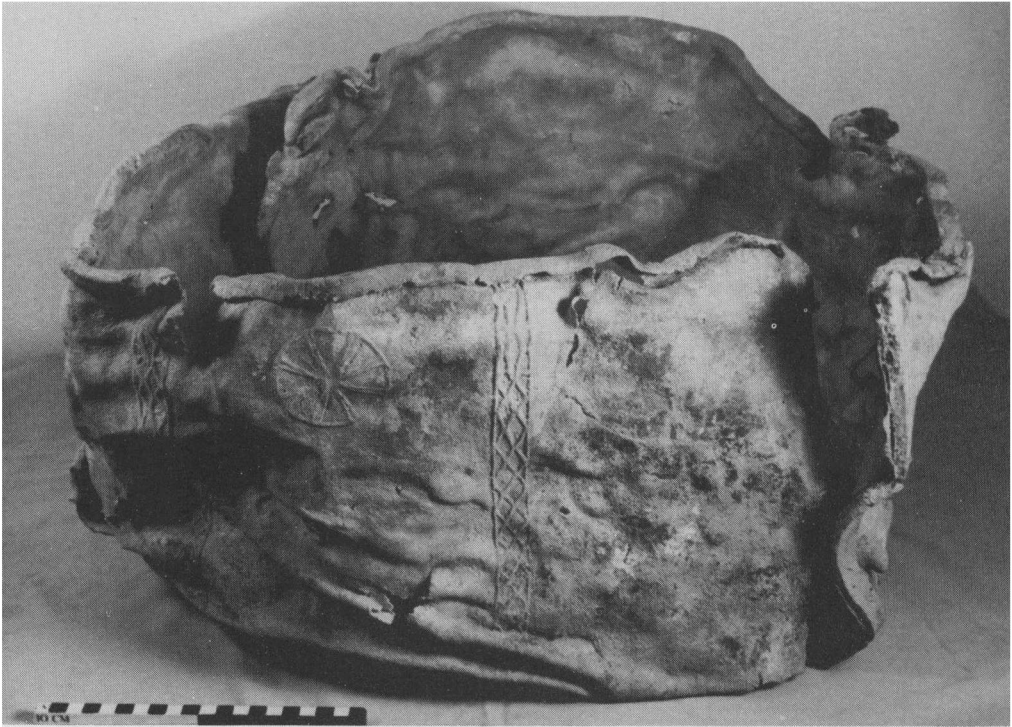
PLATE XVI



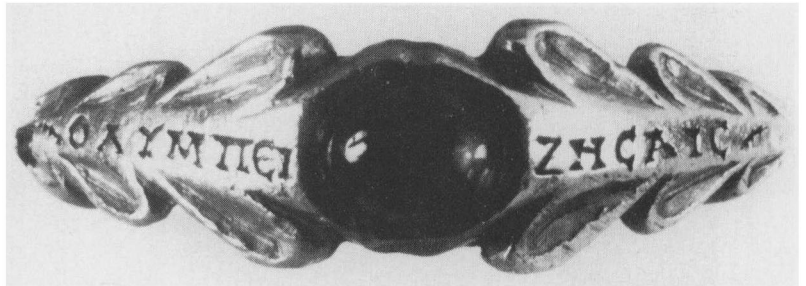
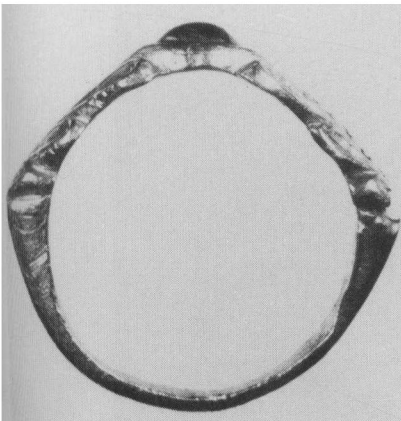
(Photo: Museum of London)

Southwark: Detail of the sill-beams joint and the central beam. (p. 229).

PLATE XVII



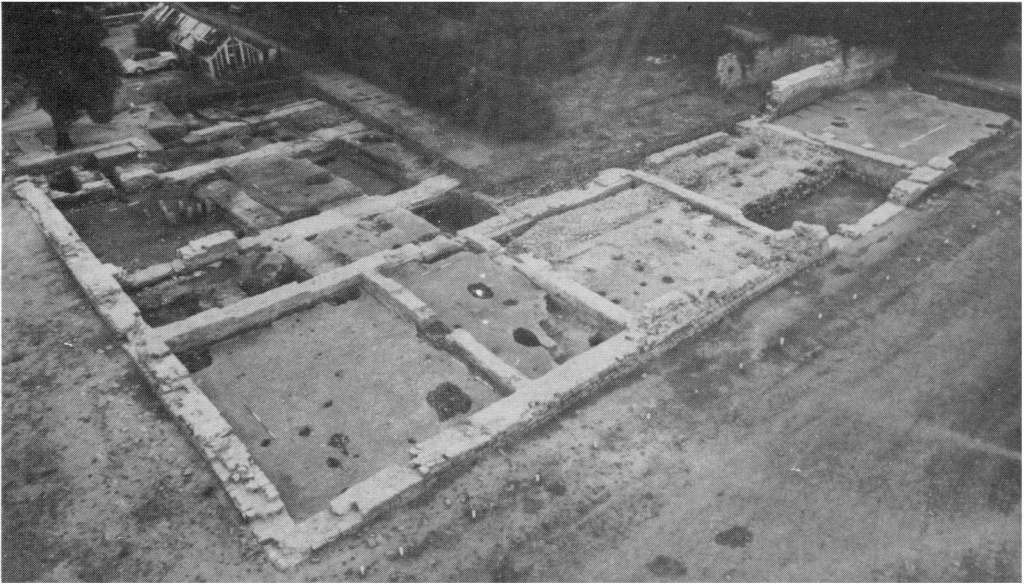
A. The Oxborough tank before conservation. (Photo: D. Wicks, Norfolk Archaeological Unit) (p. 234).



The Stonham Aspal Ring (B. Scale 2:1; C. Scale 4:1) (p. 237).

(Photo: R. Wilkins)

PLATE XVIII



(Photo: National Museum of Wales)

Caerwent: the forum-basilica excavations from the north-east, showing the *curia* (extreme right) and *aedes* next to it. The nave and aisles of the basilica lie in the centre left (p. 264).



(Photo: National Museum of Wales)

Caerwent: the *curia* from the north-west, showing remains of framework for seating-banks and stone supports for magistrate's dais (left) (p. 264).

PLATE XIX



(Photo: Glamorgan-Gwent Archaeological Trust)

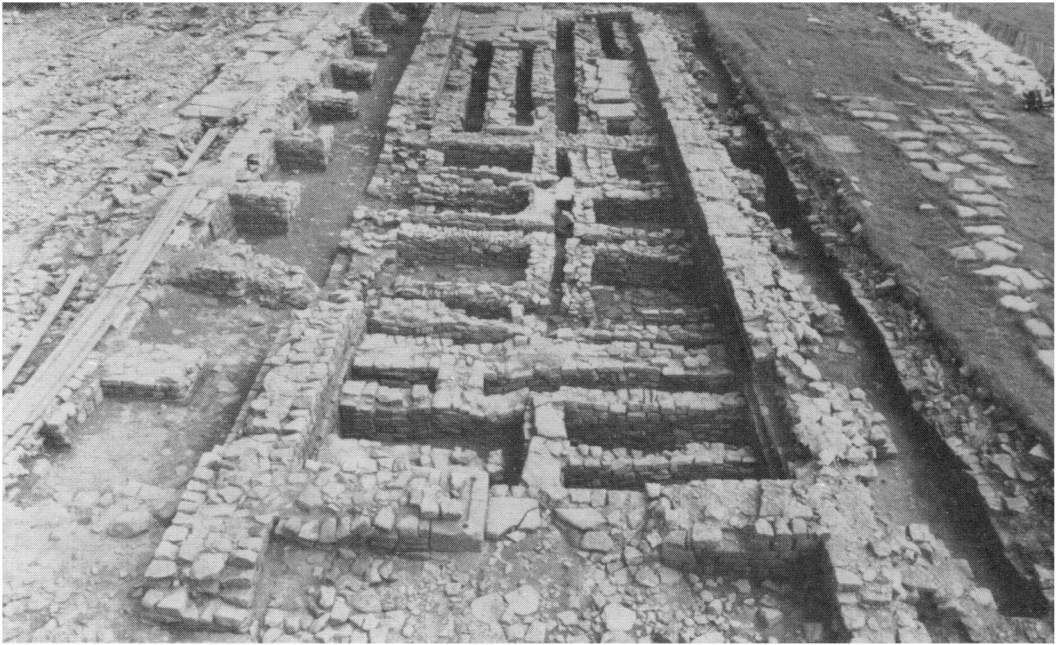
Usk: CV Primary School Site looking west, showing four *contubernia* with the central longitudinal wall cut by long narrow pits suggesting later use as stables (p. 265). Drain of *via sagularis* at right top.



(Photo: Glamorgan-Gwent Archaeological Trust)

Usk: Old Market Street Site looking south, showing the Flavian rampart (lower right) and industrial hearths and features (p. 265).

PLATE XX



(Photo: G.B. McDonnell)

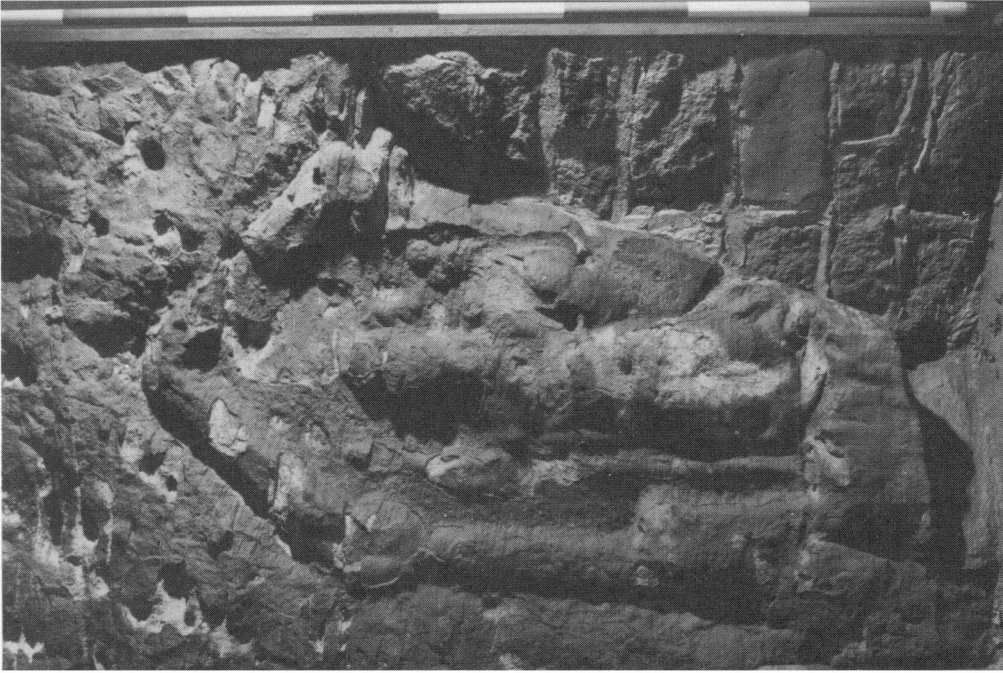
Birdoswald: the south granary looking east (p. 274).



(Photo: Grosvenor Museum, Chester)

Chester: cornice-stone from the fortress wall (p. 283), found some distance west of the North Gate, 1984.
Scale, 50 cm.

PLATE XXI



(Photo: Grosvenor Museum, Chester)
Chester: rock relief of Minerva at Edgar's Field: present state (p. 283).
Scale in lengths of 25 cm.



(Photo: G. B. McDonnell)
**Burrowswaid: the north wall of the fort and the interval tower
looking west (p. 275).**

PLATE XXII



(Photo: D. Rudling)

Preston Court Villa, Beddingham, East Sussex: the north wing and bath-suite looking west (p. 319).

PLATE XXIII



(Photo: Peter Dorrell)

London: funerary inscription (p. 327, No. 1).
Width of stone 0.245 m.

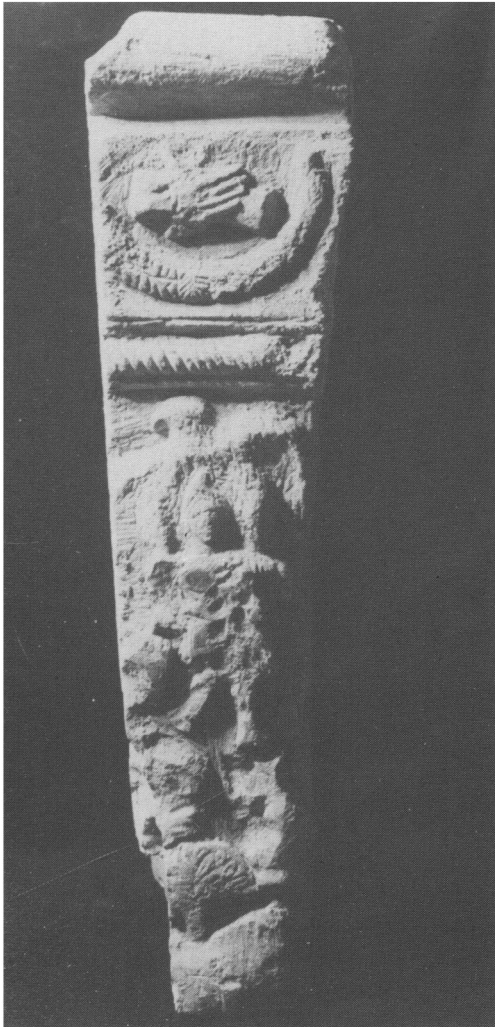
PLATE XXIV



(Photo: R.S.O. Tomlin by courtesy of Carlisle Archaeological Unit)

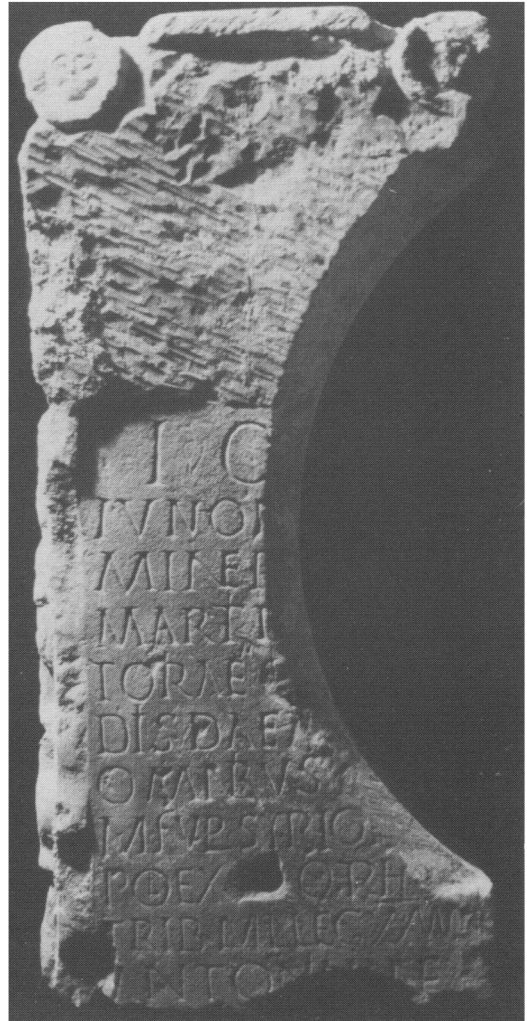
Carlisle: base of sculptured relief (p. 331, No. 4).
Width of stone 0.37 m.

PLATE XXV



(Photo: English Heritage)

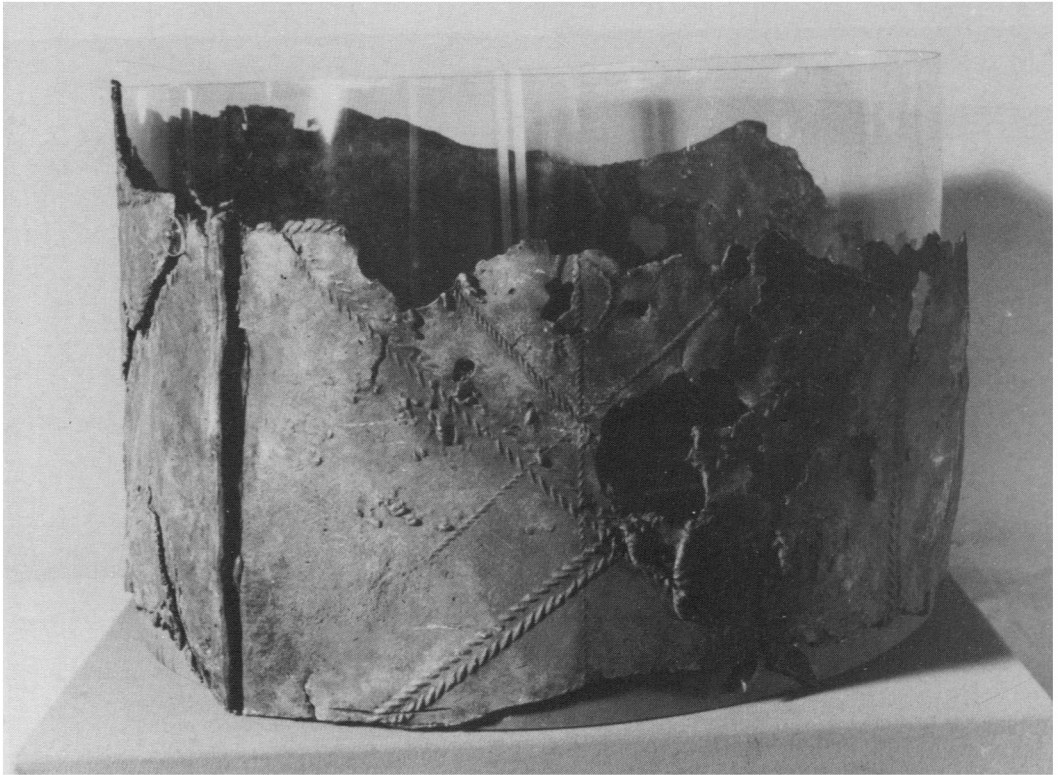
A. Carlisle: inscribed altar (p. 331, No. 5), L. face.
Height of stone 0.98 m.



(Photo: English Heritage)

B. Carlisle: inscribed altar (p. 331, No. 5), front face.
Height of stone 0.98 m.

PLATE XXVI



(Photo: Leslie Cram, Reading Museum)

Caversham: lead tank (p. 333, No. 13).
Height of tank 0.55 m.

BRITANNIA MONOGRAPHS ISSN 0953-542X

Roman Mosaics in Britain: An Introduction to their Schemes and a Catalogue of Paintings No. 1

David S. Neal 1981, 127 pp., 88 pls, 2 fiches
paperback ISBN 0 907764 14 2 £11.50/US \$23

Skeleton Green: A Late Iron Age and Romano-British Site No. 2

Clive Partridge 1981, 359 pp., 15 pls, paperback
ISBN 0 907764 00 2 £13/US \$26

Wall-Painting in Roman Britain No. 3

Norman Davey and Roger Ling 1982, 231 pp., 123 illus.,
1 fiche, paperback ISBN 0 907764 15 0 £15/US \$30

Vindolanda: The Latin Writing-Tablets No. 4

Alan K. Bowman and J. David Thomas
1983, 157 pp., 15 pls, paperback
ISBN 0 907764 02 9 £16.50/US \$33

Silchester: Excavations on the Defences

1974-80 No. 5
Michael Fulford 1984, 301 pp., 91 figs, paperback
ISBN 0 907764 03 7 £17.50/US \$35

Inchtuthil: The Roman Legionary Fortress —

Excavations 1952-65 No. 6
Lynn F. Pitts and J. K. S. St Joseph
1985, 344 pp., 47 pls, 102 figs,
paperback ISBN 0 907764 05 3 £19/US \$38

Baldock: The Excavation of a Roman and Pre-Roman

Settlement, 1968-72 No. 7
I. M. Stead and Valery Rigby
1986, 435 pp., 160 figs, paperback ISBN 0 907764 16 9 £22/US \$44

Longthorpe II: The Military Works Depot: an Episode in Landscape History No. 8

G. B. Dannell and J. P. Wild 1987, 206 pp., 75 illus., paperback ISBN 0 907764 08 8 £15.75/US \$31

Strageath: Excavations within the Roman Fort, 1973-86 No. 9

S. S. Frere and J. J. Wilkes 1989, 360 pp., 134 figs, 40 pls, paperback ISBN 0 907764 11 8
£26/US \$52

The Silchester Amphitheatre: Excavations of 1979-85 No. 10

Michael Fulford 1989, 248 pp., 84 figs, 40 pls, paperback ISBN 0 907764 12 6

NEW

Research on Roman Britain: 1960-89

Edited Malcom Todd 1989, approx. 230 pp., 60 illus., paperback ISBN 0 907764 13 4
£17/US \$34, after 30 June 1990 £19.50/US \$39

JOURNAL OF ROMAN STUDIES MONOGRAPHS ISSN 0951-6549

Aphrodisias and Rome No. 1

Joyce Reynolds 1982, 214 pp., 32 pls, hardback ISBN 0 907764 00 2 £26/US \$52

Excavations at Sabratha 1948-1951 No. 2

Philip M. Kenrick 1986, 326 pp., 64 pls, hardback ISBN 0 907764 07 X £30/US \$60

Arable Cultivation in Roman Italy No. 3

M. S. Spurr 1986, 159 pp., 4 pls, hardback ISBN 0 907764 06 1 £12.50/US \$25

Monumenta Asiae Minoris Antiqua (MAMA) IX: Monuments from the Aezanitis No. 4

Edited B. Levick, S. Mitchell, J. Potter and M. Waelkens 1988, 209 pp., 48 pls, 2 maps,
hardback ISBN 0 907764 10 X £30/US \$60

Aphrodisias in Late Antiquity No. 5

Charlotte Roueché 1989, 371 pp., 48 pls, hardback ISBN 0 907764 09 6 £35/US \$70

SPECIAL OFFERS

Journal of Roman Studies Monographs 1 and 5: £45/US \$90 1, 4 and 5: £60/US \$120

Britannia Monographs 5 and 10: £35/US \$70

Orders should be sent to: The Secretary, Roman Society, 31-34 Gordon Square, London WC1H 0PP

All prices include postage & packing. Cash with order or pro-forma invoice

Cheques payable to The Roman Society — Post Office Giro Account No. 58 743 4201

ROMAN SOCIETY



ROMA
PUBLICATIONS

