

JOURNAL OF MENTAL SCIENCE.

Asylum Reports have been received for 1909 from those marked with an asterisk:—COUNTY.—Beds, Berks, Bucks,* Cambridge, Carmarthen,* Chester, Chester (Parkside), Cornwall, Cumberland,* Denbigh, Derby* (Mickleover),* Devon, Dorset,* Durham, Essex, Glamorgan,* Gloucester, Hants, Isle of Wight, Hereford,* Hertford,* Kent (Barming),* (Chartham),* Lancashire (Lancaster), (Rainhill), (Prestwich),* (Whittingham), Leicester, Lincoln (Kesteven),* (Bracebridge), London (Colney Hatch), (Hanwell), (Banstead), (Canehill), (Claybury), (Bexley), (Stone, Dartford),* Middlesex, Monmouth,* Norfolk, Northampton, Northumberland, Nottingham, Oxford, Salop,* Somerset (Wells),* (Taunton), Stafford (Stichford),* (Lichfield),* (Leek),* Suffolk,* Surrey,* Sussex (East),* (Chichester), (Burntwood),* (Cheddleton),* Warwick, Wilts,* Worcester,* Yorkshire (Wakefield),* (Wadsley), (Menston), (Clifton), (Beverly); BOROUGH.—Birmingham (Winson Green), (Rubery Hill), Bristol,* Canterbury,* Cardiff,* Derby,* Exeter,* Hull, Hayward's Heath,* Ipswich, Leicester, Middlesbrough,* Newcastle, Norwich,* Nottingham,* Plymouth, Portsmouth, Sunderland, West Ham,* HOSPITALS.—Manchester, Woford,* Barnwood,* Albert, Lincoln,* St. Luke's, St. Andrew's, St. Ann's, Coppice,* Warneford,* Coton Hill, Bethlem,* Earlswood,* Bootham, Retreat,* Colchester,* Broadmoor, Isle of Man; Metropolitan Asylums Board (Belmont),* (Caterham),* (Darent),* (Leavesden),* (Tooting Bec),* (Rochester House);* Aberdeen,* Argyll,* Ayr,* Dumfries,* Edinburgh,* Midlothian, Fife,* Dundee, Montrose, Inverness,* Lanark,* Barony, Glasgow, (Royal),* (Lenzie), Govan,* Gartloch,* Kirklands, Perth,* Murthly, Roxburgh,* Stirling,* Baldovan, Armagh, Ballinasloe, Belfast,* Carlow, Castlebar, Cloamell, Cork, Downpatrick,* Ennis, Enniscorthy, Farnham, Kilkenny, Killarney, Letterkenny, Limerick,* Londonderry, Maryborough, Monaghan, Mullingar, Omagh, Palmerston, Richmond, St. Patrick's,* Sligo, Waterford.

The following Asylum Reports have also come to hand:—Egypt, Cape of Good Hope, Nova Scotia, New Brunswick, Victoria, New York, Massachusetts Hospital, Ontario, Verdun, Warren, Pennsylvania, Philadelphia Friends,* Binghamton, Willard, Northampton, Long View, South Australia, Cleveland, Matteawan, New South Wales, Agra and Oudh, Assam, Madras, Bengal, Bombay, Central Provinces, Rangoon, Punjab, North-Western Provinces, Tezpur, Mississippi, Pennsylvania Hospital, Washington, Utica, Long Island, Virginia Central, Illinois West, New Hampshire, Butler, Maryland, Pennsylvania West, South Mountain, Manhattan, Indiana East, Connecticut, Carolina N., Dakota N., Ohio, Carthage, Buffalo, Michigan East, Missouri, Alt Scherbitz, Massachusetts Board, Virginia West, Pennsylvania, Danville, Sheppard and Pratt Hospital, Baltimore, Pennsylvania, Harrisburgs, Pennsylvania, Norristown, Aarhus, Lebanon,* Hudson River, Rochester, Taunton, Iowa, Jamaica, Grahamstown, Pretoria, Egypt,* Albany,* Tarrytown, Straits Settlements, Lower Austria.

Authors of Original Papers receive 25 reprints of their articles free of cost if application be made on the slips when returning proof. If any *extra* reprints are required, notice should be at the same time sent to the Printers, Messrs. ADLARD and SON, Bartholomew Close, London, E.C., who will supply them at a fixed charge. Unless instructions are sent by authors of Papers when the proofs are returned, no copies can be guaranteed.

The copies of the *Journal of Mental Science* are regularly sent by carrier, who in every case obtains a receipt of delivery, to the Ordinary and Honorary Members of the Association. Complaints of non-receipt of the JOURNAL should be sent to Messrs. ADLARD. Any change of address should be intimated to the General Secretary.

MALE NURSES' (TEMPERANCE) CO-OPERATION LIMITED.

Only Addresses — { London: 10, THAYER STREET, MANCHESTER SQUARE, W.
Manchester: 235, BRUNSWICK ST. (Facing Owens College).
Edinburgh: 7, TORPICHEN STREET.

Superior Trained MALE NURSES for Medical, Surgical, Mental, Dipsomania, Fever, and Travelling Cases supplied at a moment's notice, Day or Night. All Nurses supplied by this Association are TOTAL ABSTAINERS. SKILLED MASSEURS supplied. Terms: £1 11s. 6d. to £2 2s. or upwards per week. Nurses to receive their own fees.

ALL NURSES fully insured against accident.

Telephones { (London), 538, Paddington.
(Manchester), 4699, Central.
(Edinburgh), 3715, Central.

Telegrams { "Assuaged, London."
"Assuaged, Manchester."
"Assuaged, Edinburgh."

W. WALSER, Secretary.

ALWAYS USE

REFLEX

FLOOR POLISH.

REQUIRES NO MIXING WHATEVER.

Brilliantly Polishes Floors, Linoleums, Floorcloths, &c.

Economical, Cleanly, Healthful; Maximum of Lustre for Minimum of Labour

GEO. T. COX & SONS, Ltd.,

9 & 10, ST. MARY-AT-HILL, EASTCHEAP, LONDON, E.C.

This Polish is specially adapted for use in Public Institutions and other large establishments. Samples Free on application.

Temperance Male Nurses' Co-operation.

London: 43, New Cavendish St., W.

Manchester: 176, Oxford Road.

Glasgow: 28, Windsor Terrace.

Superior trained Male Nurses for Medical, Surgical, Mental, Dipsomania, Travelling, and all cases. Nurses reside on the premises, and are always ready for urgent calls, Day or Night. Skilled Masseurs and good Valet Attendants supplied.

Terms from £1 11s. 6d. The Nurses are fully insured against accident.

TELEPHONE NOS.
London: 1472 Paddington.
Manchester: 5213 Central.
Glasgow { 949 Charing X (Nat.)
477 Central (P. O.)

TELEGRAMS:
"Tactear, London."
"Tactear, Manchester."
"Surgical, Glasgow."

M. D. GOLD, Sec.

NOTICE TO ADVERTISERS.

All communications concerning Advertisements in 'THE JOURNAL OF MENTAL SCIENCE' should be addressed to

Messrs. ADLARD & SON,
Bartholomew Close,
London, E.C.

TELEPHONE: HOLBORN 927.

A Pancreatised Food that can be made in a minute, the addition of boiling water only being necessary.



A PANCREATISED MILK AND CEREAL FOOD.

By the use of the "Allenburys" Diet all trouble of peptonising milk and farinaceous foods is overcome. In the sick room it will be found extremely useful as the food is easily digested and assimilated, is quickly made, and only the exact quantity required need be prepared at a time.

The "Allenburys" Diet is made from pure rich milk and whole wheat, both ingredients being largely pre-digested during manufacture. It can be taken by those who cannot digest cow's milk, and provides a light and very nourishing diet for Invalids, Dyspeptics and the Aged.

For travellers by sea or land this complete food will be found exceedingly valuable.

~~~~~  
**A Sample with full particulars sent free on request.**  
~~~~~

ALLEN & HANBURY'S Ltd.,
Plough Court, Lombard Street, London, E.C.

To His Most Excellent Majesty
KING GEORGE V.

May it please Your Majesty

We, the PRESIDENTS COUNCIL and the MEMBERS of the
MEDICO-PSYCHOLOGICAL ASSOCIATION
of Great Britain and Ireland

whose lives are specially devoted to the welfare and care of the Insane throughout all parts of Your Majesty's Dominions most respectfully tender to Your Majesty our heartfelt sympathy and Condolence in the grievous bereavement sustained by Your Majesty, Your Royal Consort and the much beloved Queen-Mother by the loss of

His Most Gracious Majesty King Edward

Stricken by an overwhelming sorrow this Empire mourns an all but irreparable loss; our Profession an illustrious Patron; and the Civilized World a Royal Emblem of Universal Peace, ever keenly anxious for the moral and hygienic welfare of His People, their intellectual enlightenment and happiness, the encouragement of all noble aspiration and effort, His reign has maintained in unbroken sequence the glory of His illustrious predecessor Queen Victoria.

No Monarch's heart ever beat more in unison with the heart throbs of suffering Humanity; no Monarch ever responded more eagerly to the claims of the humblest of His subjects; and His tender solicitude whenever pain, disease or sorrow cast their shadows has for ever enshrined Him in the memory of the affections of His People.

We, Your Majesty's devoted subjects, earnestly pray that you may long be spared to command the affections and loyalty of Your subjects, and to reign over the destinies of the United Peoples of a World-wide Empire.



June 1910.

W. Moran-Kent President.
H. Strain-Kenneth Treasurer.
W. G. Miller Registrar.
C. Huber-Bodley General Secretary.

SOUTH BEACON,

HADLOW DOWN, BUXTED, SUSSEX.

ESTABLISHED 1892.

Telegrams: Hadlow Down. Stations: Buxted, Mayfield, or Heathfield.

**40 Acres of
Farm and
Recreation
Ground.
Riding,**

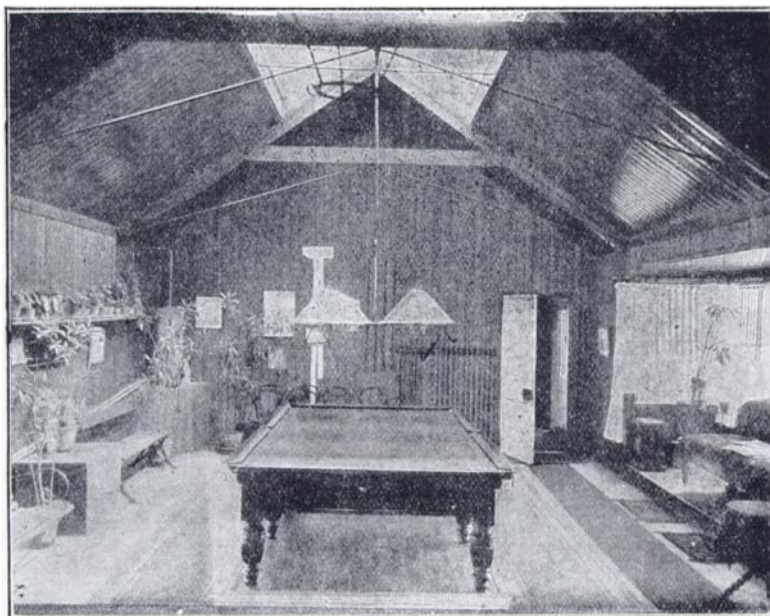


**Driving,
Motoring,
Golf
and all
Outdoor
recreations.**

For the Treatment of Nervous or slight Mental Breakdown.

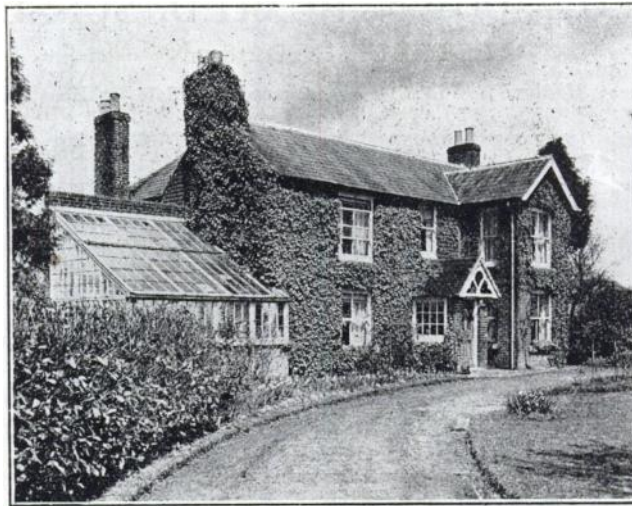
TERMS FROM 3 GUINEAS PER WEEK.

GENTLEMEN ONLY.



Full particulars from
PHILIP H. HARMER.

THE CROFT.



A comfortable cottage residence, where one gentleman can have special care and attention without necessarily coming into contact with other patients.

If desirable he can enjoy all the recreations provided at South Beacon—Motoring, Riding, Golf.

Terms 7 to 10 guineas per week.

For further particulars apply as

SOUTH BEACON.

JOURNAL OF MENTAL SCIENCE.

CONTENTS FOR OCTOBER, 1910.

Original Articles.—

Pages.

The Presidential Address on Conceptions of Insanity and Their Practical Results, delivered at the Sixty-ninth Annual Meeting of the Medico-Psychological Association, held in Edinburgh on July 21st and 22nd, 1910; by **John Macpherson, M.D., F.R.C.P.E.**—Lunacy Administration in Scotland, with Special Reference to the Royal Asylums; by **A. R. Urquhart, M.D., F.R.C.P.E.**—The Deviation of Complement in the Mental Diseases known as Mania; by **Lewis C. Bruce, M.D.**—The Infective Foci in General Paralysis and Tabes Dorsalis; by **W. Ford Robertson, M.D.**—A Bacteriological Investigation into General Paralysis of the Insane; by **Henry Lind.**—The Wassermann Reaction in the Blood and Cerebro-Spinal Fluid, and the Examination of the Cerebro-Spinal Fluid in General Paralysis and other Forms of Insanity; by **Winifred Muirhead, L.R.C.P. Edin.**—Certain Insane Conditions amongst the Criminal Classes; by **James P. Sturrock, M.A., M.D.**—Eugenics and Degeneracy; by **C. T. Ewart, M.D.**—The Viscosity of the Blood in Epilepsy; by **R. Dods Brown, M.D., M.R.C.P.E., D.P.H.**—A Clinical Study of Anæsthesia, Mental Confusion, and Moods, in Epilepsy, Confusional Insanity and Hysteria; by **Leonard D. H. Baugh, M.B., Ch.B. Edin.**—Treatment of Mental Excitement in Asylums; by **George M. Robertson, M.B.** 589—714

Occasional Notes.—

British Medical Association, Annual Meeting, 1910 715—720

Reviews and Notices.—

Mesmerism and Christian Science: a Short History of Mental Healing; by **FRANK PODMORE** 720—721

Epitome of Current Literature.—

1. Neurology.—2. Physiological Psychology.—3. Ætiology of Insanity.—4. Clinical Neurology and Psychiatry.—5. Treatment of Insanity.—6. Pathology of Insanity.—7. Sociology.—8. Asylum Reports, 1909 722—751

Notes and News.—

The Medico-Psychological Association of Great Britain and Ireland.—Irish Division.—Retirement of Sir George O'Farrell.—The Library of the Medico-Psychological Association.—Notices by the Registrar.—Notices of Meetings.—Appointments 752—780

ADLARD AND SON, IMPR., LONDON AND DORKING.