

THE MATHEMATICAL GAZETTE

EDITED BY

T. A. A. BROADBENT, M.A.

LONDON

G. BELL & SONS, LTD., PORTUGAL STREET, KINGSWAY, W.C. 2

Vol. XVII., No. 225. OCTOBER, 1933. 3s. Net.

CONTENTS.

	PAGE
FRONTISPIECE—EDWARD M. LANGLEY.	
EDWARD M. LANGLEY. I. J. P. KIRKMAN; II. E. T. BELL, - -	225
THE TREATMENT OF ELEMENTARY GEOMETRY BY A GROUP CALCULUS. G. THOMSEN, - - - - -	230
THE CONDITION FOR THE EQUALITY OF THE BISECTORS OF TWO ANGLES OF A TRIANGLE. W. J. DOBBS, - - - - -	243
THE GRAPHICAL EQUIVALENT OF THE PRINCIPLE OF MOMENTS. T. W. HALL AND A. C. WILLIAMS, - - - - -	246
THE TRANSFORMATION $y=f'(x)$. R. GARVER, - - - - -	251
THE PROBLEM OF THE CONSTANT COEFFICIENT LINEAR DIFFERENTIAL OPERATORS. D. K. PICKEN, - - - - -	257
“PRODUCTS” OF VECTORS. D. K. PICKEN, - - - - -	261
RELATIVE VELOCITY. H. E. PIGGOTT; C. O. TUCKEY, - - - - -	263
MATHEMATICAL NOTES (1081-1087). R. J. A. BARNARD; F. C. BOON; P. J. HARRIS; B. E. LAWRENCE; H. V. MALLISON; A. W. SIDDONS AND A. ROBSON; C. E. YOUNGMAN, - - - - -	266
REVIEWS. A. C. AITKEN; W. G. BICKLEY; C. E. O. BODY; F. G. W. BROWN; L. J. COMBIE; A. FERGUSON; W. V. D. HODGE; E. A. MILNE; E. H. NEVILLE; G. K. STANLEY; H. W. TURNBULL, - -	272
GLEANINGS FAR AND NEAR (933-945), - - - - -	229
INSET, - - - - -	xiii-xvi

Intending members are requested to communicate with one of the Secretaries. The subscription to the Association is 15s. per annum, and is due on Jan. 1st. It includes the subscription to “The Mathematical Gazette.”

Change of Address should be notified to C. Pendlebury, M.A., 39, Burlington Road, Chiswick, W.4. If Copies of the “Gazette” fail for lack of such notification to reach a member, duplicate copies can be supplied only at the published price.

Subscriptions should be paid to Mr. W. H. Jex, 27 Marlborough Road, Chiswick, London, W.4.

G. BELL & SONS

VOLUME I NOW READY

ELEMENTARY CALCULUS

By C. V. DURELL, M.A. and A. ROBSON, M.A.

Volume I covers all that is required for "additional" mathematics and mathematics "more advanced" in Certificate and Matriculation examinations, and also the additional pure mathematics of the London H.S.C. Volume II will deal comprehensively with other Higher Certificate work. **The book is available with or without an Appendix of additional examples.**

"This is definitely an important book, not only because of the established reputation of its authors, but because it contains new and attractive features."

JOURNAL OF EDUCATION.

Vol. I, 3s. 6d. With Appendix, 4s. 6d. Vol. II shortly.

NOW ISSUED IN TWO PARTS

GRAPH BOOK

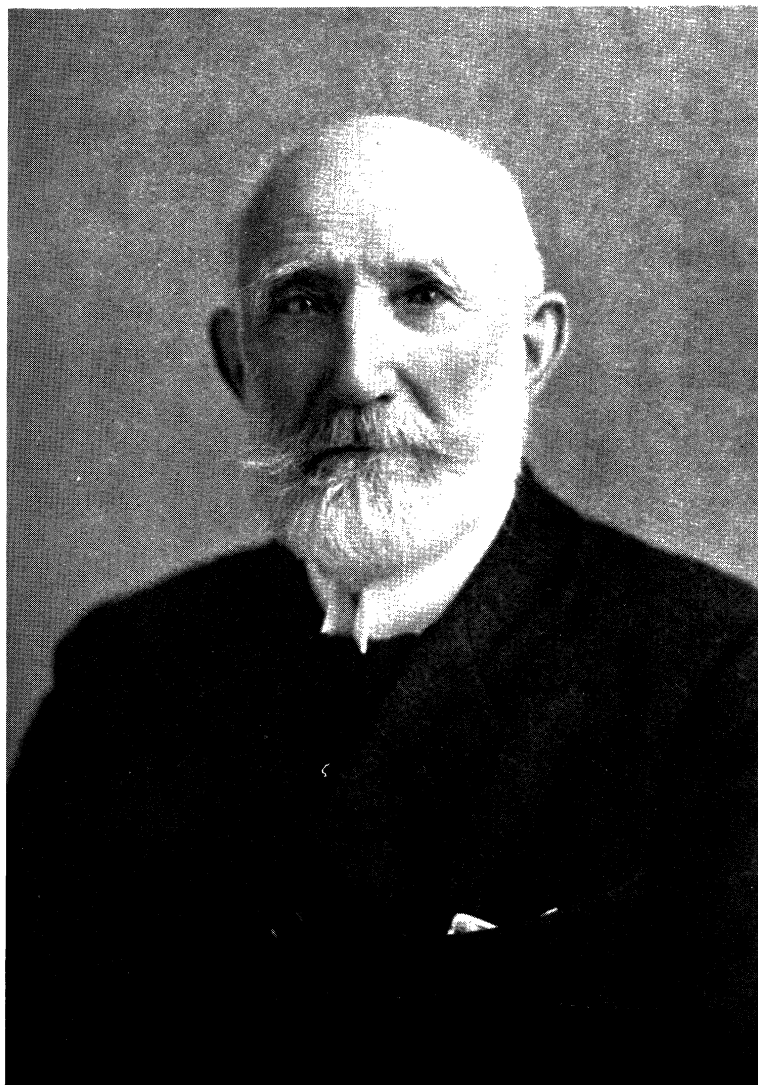
By C. V. DURELL, M.A. and A. W. SIDDON, M.A.

This well-known book has now been made available in 2 parts. For the latest impression a few pages have been simplified and amplified, while revision examples have been added. The price has also been reduced.

80 pages, size 10 × 7½ ins. Manilla, 1s. 6d.; boards, 1s. 9d.

Also issued in two parts, price 10d. each.

G. BELL & SONS, LTD., PORTUGAL ST., W.C. 2



EDWARD MANN LANGLEY