

The Journal of Laryngology & Otology

DIGITAL ARCHIVE (1887 TO PRESENT) – **FREE** TO ALL CURRENT SUBSCRIBERS



KEY PAPERS

Telehealth in treating tinnitus

Stereotactic radiosurgery as primary treatment for fast-growing vestibular schwannomas

Revision parathyroid surgery – challenges and considerations in comparison to primary surgery

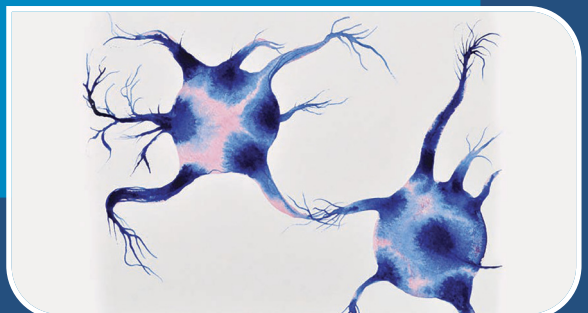
Cochlear implantation in advanced otosclerosis

Incidental findings on MRI of the internal auditory meatus for vestibular schwannoma: a systematic review

Neoadjuvant tyrosine kinase inhibitor therapy in locally advanced differentiated thyroid cancer

Covid-19-related parosmia: an exploratory survey of demographics and treatment strategies

Complications of cochlear implants



Founded in 1887
By Morell Mackenzie and Norris Wolfenden

The Journal of
Laryngology & Otology

Founded in 1887 by Morell Mackenzie and Norris Wolfenden

Editors

Edward Fisher (Worcestershire)
Jonathan Fishman (London)

Senior Assistant Editor

Ann-Louise McDermott (Birmingham)

Emeritus Editors

S S Musheer Hussain (Dundee)
Robin Youngs (Gloucester)

Book Review and Senior Assistant Editor

Liam Flood (Middlesbrough)

Assistant Editors

Kim Ah-See (Aberdeen)
Abir Bhattacharyya (London)
Sean Carrie (Newcastle)
Jayesh Doshi (Birmingham)
Quentin Gardiner (Dundee)
Joe Grainger (Birmingham)
Charlie Hall (Gloucester)
Andrew Harris (Newport)
Omar Hilmi (Glasgow)
Claire Hopkins (London)
Jonathan Hughes (London)
Richard Irving (Birmingham)
Hisham Khalil (Plymouth)
Bhik Kotecha (Essex)
Tristram Lesser (Halsall)
Prepageran Narayanan (Kuala Lumpur)

Paul Nix (Leeds)
Desmond Nunez (Vancouver)
Srinivasa Raghavan (Guildford)
Riaz Seedat (Bloemfontein)
Azhar Shaida (London)
Patrick Spielmann (Dundee)
Emma Stapleton (Manchester)
Iain Swan (Glasgow)
Vik Veer (London)
Tim Woolford (Manchester)

International Liaison Editors

David Morris (Halifax, Canada)
Rania Mehanna (Dublin, Eire)

Adviser in Audiology

Penny Feltham (Manchester)

Advisers in Pathology

Ketan Shah (Oxford)
Adrian Warfield (Birmingham)

Adviser in Radiology

Thiru Sudarshan (Dundee)

Adviser in Statistics

Wenyu Liu (Birmingham)

Website Editor

Stephen Jones (Dundee)

Cover images: (Upper left) Rhinovirus. Credit: David S. Goodsell, RCSB Protein Data Bank. Wellcome Images.
(Lower right) Hair cells in the utricle. Credit: Dr David Furness. Wellcome Images.

Email: managing-editor@jlo.co.uk. Website: <http://www.jlo.co.uk>

The Journal of Laryngology & Otology (ISSN 0022-2151) is published monthly in both print and electronic form and distributed on behalf of the proprietors, JLO (1984) Ltd, by Cambridge University Press
Registered Charity No 293063

SUBSCRIPTIONS, LICENSING, ADVERTISING AND REPRINTS

The Journal of Laryngology & Otology (ISSN 0022-2151) is published monthly in both print and electronic form and distributed on behalf of the proprietors, JLO (1984) Ltd, by Cambridge University Press.

Subscriptions: Volume 137, 2023 (Monthly)

Both standard and online-only subscription prices entitle subscribers to access all of the archival online content, which dates back to Volume 1 (1887). For further details please go to Cambridge University Press.

Institutions print and electronic: £828/\$1649. Institutions electronic only: £550/\$1088. Individuals print plus electronic: £420/\$837. Member rates available – please enquire. Special rates available for Trainees. Print ISSN 0022-2151. Electronic ISSN 1748-5460.

Orders are regarded as firm, and payments are not refundable. All orders and enquiries, including online licensing and consortia enquiries, should be sent to: Journals Subscription Department, Cambridge University Press.

*Periodicals postage paid at Rahway, NJ. US Postmaster: send address changes to *The Journal of Laryngology & Otology*, c/o Mercury Airfreight International Ltd, 365 Blair Road, Avenel, NJ 07001, USA.

Advertising sales

Contact: Ad sales, Journals, Cambridge University Press.

Tel: +44 (0)1223 325757

Fax: +44 (0)1223 325801

E-mail: UK: ad_sales@cambridge.org

US: USAdSales@cambridge.org

Other business correspondence

All other business correspondence, should be sent to: JLOProduction@cambridge.org Journals Department, Cambridge University Press. Enquiries about reprints should be sent to Ad sales: special_sales@cambridge.org

© 2023 JLO (1984) Limited

Apart from any fair dealing for the purposes of research or private study, or criticism or review, as permitted under the UK Copyright, Designs and Patents Act, 1988, no part of this publication may be reproduced, stored, or transmitted, in any form or by any means, without the prior permission in writing of the Editors, or in the case of reprographic reproduction in accordance with the terms of licences issued by the Copyright Licensing Agency in the UK, or in accordance with the terms of licences issued by the appropriate Reproduction Rights Organization outside the UK. Enquiries concerning reproduction outside the terms stated here should be sent to the publishers at the above address. Contributors and advertisers are responsible for the scientific content and the views expressed, which are not necessarily those of the Editors or of Cambridge University Press.

Typeset by Techset and printed in the UK by CPI Group (UK) Ltd.



This Journal issue has been printed on FSC™-certified paper and cover board. FSC is an independent, non-governmental, not-for-profit organization established to promote the responsible management of the world's forests. Please see www.fsc.org for information.

SUMMARY GUIDANCE FOR AUTHORS

The Journal of Laryngology & Otology (JLO) is a peer-reviewed publication, and is indexed/abstracted in most major databases including Index Medicus, MEDLINE/ PubMed, Science Citation Index, Current Contents and EMBASE.

Only a very brief summary of the submission requirements is presented here: when preparing their manuscripts, authors must consult and comply with the full Instructions for Authors on the JLO website at <http://www.jlo.co.uk/docs/submittingarticles.htm>. Adherence to these will speed up the editorial process.

All contributions are considered for publication on the understanding that they have been submitted solely to the JLO and that they have not previously been published. Contributions in the following categories will be considered: Main Articles (reporting clinical research or audit), Review Articles, Historical Articles, Short Communications (including 'How I do it'), Clinical Records (case reports), and Letters to the Editors.

Submission

Please submit articles electronically using the ScholarOne Manuscripts submission site: <https://mc.manuscriptcentral.com/jlo>

The text of the manuscript (incorporating all tables and the figures legends, but *not* the figures themselves) must be saved as a Microsoft Word document or an RTF file (i.e. 'rich text format'). Use double-spaced, unjustified text throughout. The title page must contain the full title of the paper; the names and qualifications of all authors; the departments(s) and institution(s) where the work was carried out; and the name, postal and e-mail address, and telephone and fax numbers of the author responsible for all communications about the manuscript and proofs. An Abstract (maximum 150 words) and Key words must be provided for all contributions (except Letters).

References should be identified in the text by superscript Arabic numerals and listed at the end of the manuscript in the order in which they are first cited in the text. The tables feature of the word processor should be used to prepare Tables, and both these and the list of Figure legends should appear on separate pages at the end of the manuscript. All Figures must be saved as separate TIFF files at a resolution of 600 dpi.

The authors of all material accepted for publication will be required to assign copyright to JLO (1984) Ltd; a form for this purpose and for ordering offprints will accompany the proofs. The proofs will be sent by e-mail to the corresponding author as a PDF file, and should be corrected and returned within three working days.