

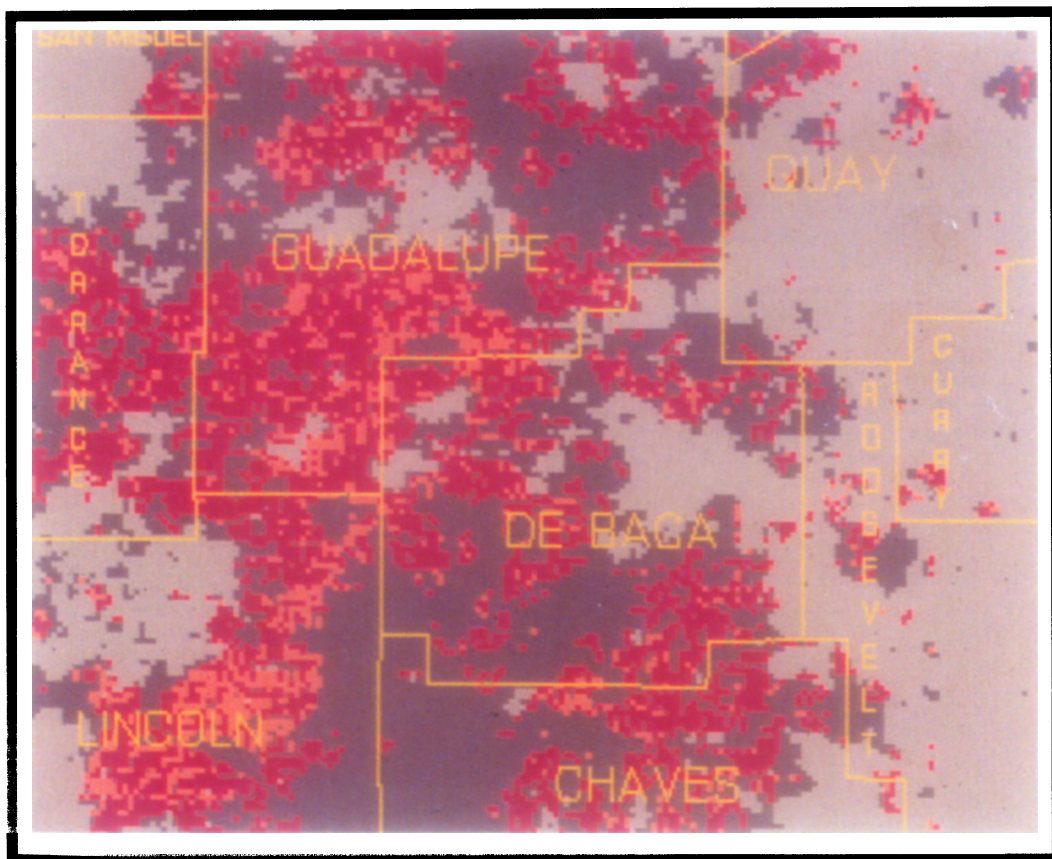
WEED TECHNOLOGY

A Journal of the Weed Science Society of America

VOLUME 7

JANUARY-MARCH 1993

NUMBER 1



ISSN 0890-037X

WETEE9 7(1) 1-278 (1993)

WEED TECHNOLOGY

A Journal of the Weed Science Society of America

Weed Technology published quarterly beginning each January–March issue, is included along with *Weed Science* and *WSSA Newsletter* to Weed Science Society of America (WSSA) members. Annual membership costs \$60 with \$20 student affiliate memberships on a calendar year basis only.

Weed Technology, subscriptions are \$60 per year (four issues per volume). New subscriptions begin with the January–March issue. Subscribers, including libraries and institutions, can obtain both *Weed Science* (volume of four issues per year) and *Weed Technology* for \$100 annually.

Changes of mailing address, inquiries about copies lost in the mail, and requests for back issues and for information about placing advertisements and about receiving journals, membership and subscriptions should be sent to WSSA, 309 W. Clark St., Champaign, IL 61820. Send dues by December 1 each year. Claims for copies lost in the mail must be received within 30 days (90 days foreign) of the issue date to insure replacement at no charge.

Send manuscripts to Chester L. Foy, Editor, *Weed Technology*, Dept. of Plant Pathology, Physiology, and Weed Science, Virginia Polytech. Institute & State Univ., 503 Price Hall, Blacksburg, VA 24061-0331. Authors are charged \$50 per page (non-members \$100) to cover a portion of publication costs. The Editor can exempt page charges in advance when justified.

Weed Technology (ISSN 0890-037X) is published by the Weed Science Society of America. Copyright 1993 by the Weed Science Society of America. Printed in USA. All rights reserved. Reproduction in part or whole is prohibited. Return POD Form 3579 to WSSA, 309 W. Clark St., Champaign, IL 61820 (AC/217-356-3182).

The Weed Science Society of America fully subscribes to the belief that progress in science depends upon the sharing of ideas, information, and materials among qualified investigators. Authors of papers published in *Weed Technology* are therefore encouraged, whenever practicable and when state and federal laws permit, to share genotypically unique, propagative materials they might possess with other workers in that area who request such materials for the purpose of scientific research.

WSSA OFFICERS

J. Antognini, President
H. D. Coble, President Elect
Alex G. Ogg, Jr., Vice President
J. R. Abernathy, Past President
Donald C. Thill, Secretary
J. M. Chandler, Treasurer
B. Truelove, Editor-in-Chief



Sustaining Members

March 10, 1993

A & L Agricultural Laboratories
ACDS Inc.
Agri Diagnostics Associates
Agrolinz Inc.
Agvise
ALMACO
American Agricultural Services Inc.
Andersons
BASF Corporation
Battelle
Chemorse Ltd.
CIBA-GEIGY Canada Inc.
CIBA-GEIGY Corporation
CIRTA
Concord Inc.
Deere & Company
DowElanco
DuPont Agricultural Products
Environmental Technologies
EPL Bio-Analytical Services
FMC Corporation
Farmland Industries
Gandy Corporation
Griffin Corporation
Growmark Inc.
Gylying Data Management, Inc.
Hoechst-Roussel Agri Vet
Ishihara Sangyo Kaisha Ltd.
Kincaid Equipment Manufacturers
Lehigh Agric. & Biological Service
LI-COR, Inc.
Mandel Scientific Company Ltd.
MARATHON Ag/Environmental
Miles Inc.
Minnesota Valley Testing Lab
Monsanto Company
Mycogen Company
Nissan Chemical America Corp.
NOR-AM Chemical Company
PBI/Gordon Corporation
R & D Sprayers Inc.
Research Development Alternatives
Ricera Inc.
Rohm & Haas Company
Sandoz Crop Protection
O. M. Scott & Sons Company
Spraying Systems Company
Sumitomo Chemical America Inc.
Terra International Inc.
Thomson Publications
Uniroyal Chemical Corporation
United Agri Products
Valent USA Corporation
Vaughn Agricultural Research Service
Weed Systems Equipment Inc.
Wintersteiger America Inc.
ZENECA Inc.

WEED TECHNOLOGY

January–March 1993

Volume 7
Number 1

A Journal of the Weed Science Society of America

Table of Contents

Technology Notes

- 1 News Notes of General Weed Science Interest

•Features

- 6 Effect of Ethalfluralin and Other Herbicides on Trifluralin-Resistant Green Foxtail (*Setaria viridis*). Hugh J. Beckie and Ian N. Morrison
- 15 Effective Kill of Trifluralin-Susceptible and -Resistant Green Foxtail (*Setaria viridis*). Hugh J. Beckie and Ian N. Morrison

•Research

- 23 Grain Rye Residues and Weed Control Strategies in Reduced Tillage Potatoes. Luis E. Lanfrancioni, Robin R. Bellinder, and Russell W. Wallace
- 29 Persistence of Chlorsulfuron and BAY SMY 1500 in Air Dry Soil at Room Temperature. Birhanu Kinfe and Thomas F. Peeper
- 33 Longevity of Yellow Starthistle (*Centaurea solstitialis*) Achenes in Soil. Robert H. Callihan, Timothy S. Prather, and Francis E. Northam
- 36 Effect of MSMA on Entireleaf Morningglory (*Ipomoea hederacea* var. *integriuscula*) Control with Postemergence Herbicides. David L. Jordan, Marilyn R. McClelland, Robert E. Frans, and J. Andrew Kendig
- 42 Herbicide Efficacy and Tolerance in Sweet White Lupin. Donald Penner, Richard H. Leep, Frank C. Roggenbuck, and James R. Lempke
- 47 Hemp Dogbane (*Apocynum cannabinum*) and Wild Blackberry (*Rubus allegheniensis*) Control in No-tillage Corn (*Zea mays*). Scott Glenn and Neil G. Anderson
- 52 Perennial Sowthistle (*Sonchus arvensis*) Interference in Soybean (*Glycine max*) and Dry Edible Bean (*Phaseolus vulgaris*). Richard K. Zollinger and James J. Kells
- 58 Quackgrass (*Elytrigia repens*) Interference and Control in Seed Alfalfa (*Medicago sativa*). James R. Moyer and G. Bruce Schaalje

•Peer reviewed papers.

Cover

This image map of a portion of central New Mexico was derived from meteorological satellite data. It shows the potential of coarse spatial resolution imagery to detect various levels of snakeweed infestation on rangelands. The image map was generated on Earth Resources Data Analysis System (ERDAS) software and was submitted by Albert J. Peters, Department of Geography, New Mexico State University, Las Cruces, NM 88003. (For more information, see article entitled "Remote Sensing of Broom Snakeweed (*Gutierrezia sarothrae*) with NOAA-10 Spectral Image Processing" published on pages 1015–1020 of the October–December 1992 issue of *Weed Technology*.)

- 65 Weed Control in Corn (*Zea mays*) with Primisulfuron as Influenced by Rate, Timing, and Herbicide Combinations. Mathieu Ngouajio and Edward S. Hagood, Jr.
- 70 Response of Common Bean (*Phaseolus vulgaris*) Cultivars to Metobromuron. Soon J. Park and Allan S. Hamill
- 76 Effect of 2,4-D on Leafy Spurge (*Euphorbia esula*) Viable Seed Production. Jamal S. Al-Henaïd, Mark A. Ferrell, and Stephen D. Miller
- 79 Imazethapyr and Imazaquin Control Puncturevine (*Tribulus terrestris*) but Carry Over to Spinach (*Spinacia oleracea*). David H. Johnson and Ronald E. Talbert
- 84 Response of Southern Wax Myrtle (*Myrica cerifera*) to Herbicides in Florida. Rob S. Kalmbacher, Joe E. Eger, Jr., and Amanda J. Rowland-Bamford
- 92 DPX-PE350 Does Not Interact with Early-Season Insecticides in Cotton (*Gossypium hirsutum*). David L. Jordan, Robert E. Frans, and Marilyn R. McClelland
- 97 Wine Grape (*Vitis vinifera* L.) Response to Simulated Herbicide Drift. Kassim Al-Khatib, Robert Parker, and E. Patrick Fuerst
- 103 Herbicide Efficacy for Production of Container Ornamentals. Lena B. Gallitano and Walter A. Skroch
- 112 Control of Yellow and Purple Nutsedges (*Cyperus esculentus* and *C. rotundus*) in Nursery Crops. Jeffrey F. Derr and John W. Wilcut
- 118 Soybean (*Glycine max*) Yield and Quality Responses Associated with Wild Poinsettia (*Euphorbia heterophylla*) Control Programs. Teresa S. Willard and James L. Griffin
- 123 Influence of Preemergence and Postemergence Herbicides on Rooting of Turfgrasses. Peter J. Landschoot, Thomas L. Watschke, and Bryce F. Hoyland
- 127 Effect of Chemical Treatments on Bahiagrass (*Paspalum notatum*) Suppression. Linda S. Nelson, Kurt D. Getsinger, and Kien T. Luu
- 134 Inhibition of Downy Brome (*Bromus tectorum*) Root Growth by a Phytotoxin from *Pseudomonas fluorescens* Strain D7. Patrick J. Tranel, David R. Gealy, and Ann C. Kennedy
- 140 Crop Responses to Hexazinone, Imazapyr, Tebuthiuron, and Triclopyr. C. Benjamin Coffman, J. Ray Frank, and William E. Potts
- 146 Canada Thistle (*Cirsium arvense*) Control with Disking and Herbicides. Robert L. Zimdahl and Gus Foster
- 150 Response of Cotton (*Gossypium hirsutum*) to Preplant-Applied Hormone-Type Herbicides. Ralph S. Baker
- 154 Spray Carrier Salts Affect Herbicide Toxicity to Kochia (*Kochia scoparia*). John D. Nalewaja and Robert Matysiak
- 159 Cotton (*Gossypium hirsutum*) Response to DPX-PE350 Applied Postemergence. David L. Jordan, Robert E. Frans, and Marilyn R. McClelland
- 163 Interactions of Fenoxaprop-ethyl with Fenchlorazole-ethyl in Annual Grasses. Gerald R. Stephenson, Abraham Tal, Norman A. Vincent, and J. Christopher Hall
- 169 Effect of Dithiopyr Timing on Establishment of Three Cool-Season Turfgrass Species. B. Jack Johnson and Sarah H. Bundschuh
- 174 Protection from Primisulfuron Injury to Corn (*Zea mays*) and Sorghum (*Sorghum bicolor*) with Herbicide Safeners. Marulak Simarmata and Donald Penner
- 180 Kikuyugrass (*Pennisetum clandestinum*) Management in Turf. David W. Cudney, James A. Downer, Victor A. Gibeault, J. Michael Henry, and John S. Reints
- 185 Management of Field Violet (*Viola arvensis*) in Strawberries (*Fragaria × anassa*). Douglas J. Doohan, Thomas J. Monaco, and Thomas J. Sheets
- 190 Growth Response of Wild Poinsettia (*Euphorbia heterophylla*) Following Foliar Herbicide Applications. Teresa S. Willard and James L. Griffin

- 196 Total Postemergence Herbicide Programs in Cotton (*Gossypium hirsutum*) with Sethoxydim and DPX-PE350. David L. Jordan, Robert E. Frans, and Marilyn R. McClelland
- 202 Clomazone as a Component in Cotton (*Gossypium hirsutum*) Herbicide Programs. David L. Jordan, Alan C. York, Marilyn R. McClelland, and Robert E. Frans
- 212 Leafy Spruce (*Euphorbia esula*) Control and Grass Injury with Sulfometuron. K. George Beck, Rodney G. Lym, Roger L. Becker, Mark A. Ferrell, Deane W. Finnerty, Ronald J. Frank, M. Ann Henson, and Mark A. Peterson
- 216 Influence of Application Rate and Timing on Efficacy of DPX-PE350 Applied Postemergence. David L. Jordan, Robert E. Frans, and Marilyn R. McClelland
- 220 Barnyardgrass (*Echinochloa crus-galli*) Interference in Soybeans (*Glycine max*). Gordon D. Vail and Lawrence R. Oliver
- 226 Selectivity of Pronamide and Trifluralin in Belgian Endive (*Cichorium intybus*). Wondimagegnehu Mersie and Joycelyn Elliott

•Notes

- 230 Proso Millet (*Panicum miliaceum*) Tolerance to Several Postemergence Herbicides. Drew J. Lyon and David D. Baltensperger
- 234 Germination and Root Dynamics of Range Weeds and Forage Species. Roger L. Sheley, Larry L. Larson, and Douglas E. Johnson

•Regulatory

- 238 Use of Ground Water Monitoring Data for Pesticide Regulation. Michael R. Barrett, W. Martin Williams, and David Wells

•Symposium

- 248 Geographic Information Systems. Preface. Lawrence W. Lass
- 249 GPS and GIS for Weed Surveys and Management. Lawrence W. Lass and Robert H. Callihan
- 255 Coupling Geographic Information Systems and Models for Weed Control and Groundwater Protection. John P. Wilson, William P. Inskeep, Paul R. Rubright, Diana Cooksey, Jeffrey S. Jacobsen, and Robert D. Snyder
- 265 Weed Eradication Using Geographic Information Systems. Timothy S. Prather and Robert H. Callihan

•Book Reviews

- 270 Soil Solarization. Reviewed by Anton Baudoin
- 271 Controlled Delivery of Crop-Protection Agents. Reviewed by C. G. McWhorter
- 272 Topics in Photosynthesis—Volume 10, Herbicides. Reviewed by Stephen O. Duke

•Intriguing World of Weeds

- 274 Chicory. Larry W. Mitich

•Helpful Hints for Technical Writing

- 278 Avoid Dangling Participles. J. H. Dawson

EDITOR
Chester L. Foy

TECHNICAL EDITOR
Richard W. Rhoades

ASSOCIATE EDITORS

Thomas A. Bewick
Barry J. Brecke
John Cardina
William J. Chism
William W. Donald
Clyde C. Dowler
Joan Dusky
Neil Harker
Robert G. Harvey, Jr.
George Kapusta

James R. Martin
Robert F. Norris
Thomas F. Peeper
Donald Penner
Fred Roeth
Phillip Stahlman
Clarence J. Swanton
Ronald E. Talbert
Donald C. Thill
Alan C. York