

# GEOLOGY REVIEWS

**Series Editors:** **B.S. Sokolov**, Institute of Paleontology and **M.A. Semikhatov**, Institute of Geology, USSR Academy of Sciences, Moscow

Geology Reviews includes contributions on Precambrian and Cambrian geology and paleontology, paleofloristics, the evolution of the biosphere, the geological history of the earth's climate and the geochemistry of sedimentary processes. Some of the reviews will be prepared specially for the series, while others will be adapted from published Russian-language material.

**Volume 1 Part 1 GENERAL PROBLEMS OF PROTEROZOIC STRATIGRAPHY IN THE USSR**

By **Mikhail A. Semikhatov**, Institute of Geology, USSR Academy of Sciences, Moscow

*"The work is authoritative. No one could have treated this material better ... embodies Soviet geological thinking at its recent best."*

**W.B. Harland**, Department of Earth Sciences, University of Cambridge, UK

Providing a comprehensive overview of recent Soviet work in this field, the author describes the chronostratigraphic concept of the Precambrian and details the official stratigraphic scale of the Proterozoic in the USSR. The methods applied to substantiate its boundaries are discussed and special attention is directed to the use of biostratigraphic methods in the stratigraphy of the Proterozoic.

A comprehensive summary is given of the distribution of stromatolites and organic-walled and silicified microfossils in key regions of northern Eurasia and elsewhere. Also covered is the biostratigraphic potential of these groups in various areas of the Proterozoic.

## CONTENTS

### Section I : General Concepts of the Subdivision of the USSR Precambrian and its Scales

From Lithostratigraphy to Chronostratigraphy in the USSR Proterozoic: The First Steps • Chronostratigraphy Versus Chronometry • The Present Stratigraphic Scale of the USSR Precambrian • The Geochronometric Provision of the USSR Proterozoic Stratigraphic Scale • Current Views on Improving the USSR Precambrian Stratigraphic Scale

### Section II : The Biostratigraphic Method as Applied to the USSR Proterozoic

Stromatolites: Classification and Stratigraphic Importance • Microfossils as Applied to the Subdivision and Correlation of the USSR Proterozoic: Organic-Walled and Silicified Microfossils

1991 ISBN: 3-7186-5112-2

192+ijpp Flexicover

List Price: \$ 107.00/£56.00 Price for individuals \*\$53.00/£28.00

\*Please contact the publisher for further information on the price for individuals.

### Also to be published in Volume 1:

**A.B. Ronov et al.**, General Trends in the Evolution of Chemical Composition of Sedimentary and Magmatic Rocks of Continental Earth Crust • **S.V. Meyer**, Geography of Macroevolution in Higher Plants • **S.N. Golubev**, Biomineralization: Fundamental and Applied Aspects • **N.M. Chumakov**, The Problem of the Oldest Glaciations (Pre-Pleistocene Glacial Geology of the USSR)

### Subscription information

Approx. 400pp per volume ISSN: 0896 7571

Current Subscription: Volume 1 (1991)

Parts are available individually as well as by subscription

Please contact the publisher for price information.

**Harwood Academic Publishers Order Department,**

**c/o STBS, P.O. Box 90, Reading, RG1 8JL, UK**

**or P.O. Box 786 Cooper Station, New York, NY 10276, USA**



harwood academic publishers

chur • reading • paris • philadelphia • tokyo • melbourne

---

# MAN & ENVIRONMENT

*Journal of the Indian Society for Prehistoric and Quaternary Studies*  
*c/o Department of Archaeology, Deccan College, Pune 411 006, India*

---

## **Editors:**

**V. N. Misra and  
Statira Wadia**  
Department of Archaeology  
Deccan College,  
Pune 411006

## **Associate Editors:**

**Ravi Korisettar**  
Department of History  
and Archaeology,  
Karnatak University,  
Dharwad 580 003

**R. K. Ganjoo and Zarine Cooper**  
Department of Archaeology,  
Deccan College,  
Pune 411 006

---

## **S C O P E**

The journal **Man and Environment** is published bi-annually in June and December. It publishes original research papers, review articles, short research reports, and book reviews. The scope of the journal covers prehistoric societies and all aspects of their environment, as well as contemporary environment and simple societies with a relevance to the past. The journal also publishes research papers covering subjects, like ecology, sedimentology, climatology, etc., of the Pleistocene and Holocene periods. A copy of the guidelines for contributors can be obtained from the editorial office.

Life Membership: US \$ 150  
Annual Membership: US \$ 20

All Life and Annual Members will receive copies of the journal from the office of the Society: **c/o Department of Archaeology, Deccan College, Pune 411 006, India.**

Institutions, non-members and libraries can procure copies of the journal from the distributor, with whom old issues of the journal are also available. The address of the distributor is:

## **S U B S C R I P T I O N S**

Subscriptions should be sent by a demand draft payable to the **General Secretary, Indian Society for Prehistoric and Quaternary Studies.**

**M/s Books and Books,  
C 4A/20A, Janakpuri,  
New Delhi 110 058,  
India.**

---



# AUSTRALIAN JOURNAL OF EARTH SCIENCES

EDITOR  
BRIAN JONES



ISSN 0812-0099  
5 issues per year

Published on behalf of the **Geological Society of Australia, Inc.**, the *Australian Journal of Earth Sciences* publishes original research and review papers, shorter geographical notes and encourages critical discussion of published papers. The journal is concerned with a wide variety of topics ranging from those of purely theoretical nature to those of more general interest to geoscientists working in and around the southern continents.

In 1991, publication of the journal increased from four issues to five issues per year, with one issue each year devoted to a special theme.

The 1992 subscription rates for *Australian Journal of Earth Sciences* are A\$180.00 (Australasia) and \$US225.00/UK£138.00 (elsewhere) including delivery. The journal is dispatched by surface post within Australia and by Express Post from Australia.

---

## Subscription Order Form

- I would like to subscribe to *Australian Journal of Earth Sciences* at \$A180.00/\$US225.00/£UK138.00
- I wish to pay by cheque/postal order (*delete as necessary*) and enclose the sum of .....
- I wish to pay for my 1992 subscription by Bankcard/Mastercard/Visa (*delete as necessary*)

Please debit my credit card no. ....

Expiry date ..... With the sum of .....

Signature ..... Date .....

- Please send me a complimentary copy of *Australian Journal of Earth Sciences*
- I am interested in contributing to the *Australian Journal of Earth Sciences* and would like to receive a copy of the Instructions to Authors

Name .....

Address .....

..... Post Code .....

Return this Subscription Order Form to:

**Blackwell Scientific Publications (Australia) Pty Ltd**  
PO Box 378, Carlton South, Victoria 3053, Australia

## Mountains of Fire

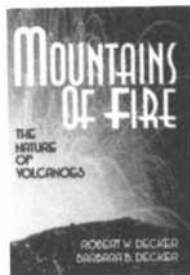
The Nature of Volcanoes

ROBERT and BARBARA DECKER

'... a thoroughly readable introduction to volcanoes, especially suitable for general readers, school geography students and first-year undergraduates.'

*The Times Higher Education Supplement*

£30.00 net HB 0 521 32176 X 226 pp.  
£10.95 net PB 0 521 31290 6



## Transmission Electron Microscopy of Minerals and Rocks

ALEX C. MCLAREN

An introduction to the technique written specifically for geologists and mineralogists.  
£50.00 net HB 0 521 35098 0 400 pp.  
*Cambridge Topics in Mineral Physics and Chemistry 2*

Now in paperback

## New Views on an Old Planet

Continental-Drift and the History of Earth

T. VAN ANDEL

A carefully constructed and enhancingly illustrated historical account of the earth that will appeal to the layperson and be a valuable book for students in introductory courses in the earth sciences.

£15.95 net PB 0 521 40691 9 272 pp.

NEW VIEWS  
ON AN OLD PLANET

CONTINENTAL DRIFT AND THE HISTORY OF EARTH



Tjeerd H. van Andel

## Introduction to the Physics of the Earth's Interior

JEAN-PAUL POIRIER

This book provides the background information necessary to understand the widely-dispersed and controversial research about the structure, composition, or temperature of the deep Earth.

£40.00 net HB 0 521 38097 9 274 pp.

£17.95 net PB 0 521 38801 5

*Cambridge Topics in Mineral Physics and Chemistry 3*

## Geological Evolution of Antarctica

M. R. A. THOMSON, J. A. CRAME and J. W. THOMSON

A collection of papers presented at the Fifth International Symposium on Antarctic Earth Sciences, held at Robinson College, Cambridge.

£55.00 net HB 0 521 37266 6 736 pp.  
*World and Regional Geology 1*

Geological Evolution of Antarctica

M. R. A. THOMSON, J. A. CRAME & J. W. THOMSON



## Permo-Triassic Events in the Eastern Tethys

Stratigraphy, Classification and Relations with the Western Tethys

W. C. SWEET, YANG ZUNYI, J. M. DICKINS and YIN HONGFU

This book brings together information gathered in the International Geological Correlation Programme Project 203.

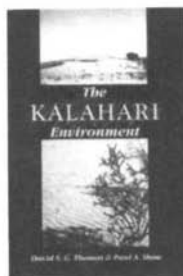
£45.00 net HB 0 521 38214 9 240 pp.  
*World and Regional Geology Series 2*

## The Kalahari Environment

DAVID S. G. THOMAS and PAUL A. SHAW

A thorough and up-to-date review of the nature and development of the Kalahari environment.

£55.00 net HB 0 521 37080 9 304 pp.



## Progress in Metamorphic and Magmatic Petrology

A Memorial Volume in Honour of D. S. Korzhinskiy

Edited by L. L. PERCHUK

A collection of review articles summarising recent scientific achievements in the theory of petrology.

£80.00 net HB 0 521 39077 X 520 pp.

For further information contact Science Publicity at the address below.  
To order any Cambridge book call our 24-hour ordering service on 0223 325970.



**CAMBRIDGE**  
UNIVERSITY PRESS

The Edinburgh Building, Cambridge CB2 2RU

# MODERN GEOLOGY

**Managing Editor**

*H.S. Torrens*, Department of Geology, University of Keele, Staffordshire  
ST5 5BG, UK

**Executive Editor**

*D. Palmer*, 31 Mawson Road, Cambridge CB1 2DZ, UK

**No Page Charges**

**Free Colour**

**25 Free Reprints**

*Modern Geology* reports experimental and theoretical findings at the frontier of geological research. Original papers, reviews and short communications afford comprehensive coverage of important developments in the earth and planetary sciences. The editors aim to preserve a balanced perspective of the physical, chemical and biological spheres and to identify major trends and areas of growth in the field. To complete its far-ranging coverage, the journal offers discussion and comments on previous contributions, as well as book reviews.

4 issues per volume • ISSN: 0026-7775 • Current subscription: Volume 17 (1992)  
Base list rate per volume: \$243.00 / Dfl 468.00 / ECU 203.00 \*

## SPECIAL ISSUE

### VOLUME 16 (1-2) DINOSAUR STUDIES

*Commemorating the 150th Anniversary of Richard Owen's Dinosauria*

**Edited by**

†*L.B. Halstead*

This issue celebrates the 150th anniversary of Richard Owen's description of a new reptilian order, the Dinosauria. The papers, by some of the world's leading experts, will help to dispel some of the myths associated with these animals, both in the perceptions of the scientist and the layperson.

1991 • Softcover • 250 pages • 82 illustrations • ISBN: 2-88124-833-0  
List price: \$329.00 / £177.00  
Price for individuals: \$148.00 / £83.00 \*\*

\* **Base list rate** – available only to individuals who prepay and includes airmail postage and handling charges. Separate multiple user rates apply to institutions. The US dollar rate applies to North America only. Contact your agent or STBS for other rates. All prices are subject to change without notice.

\*\* **Price for individuals** – available to individuals who join the Science and Arts Society (SAS) book club. A lifetime membership fee of \$8/£5 entitles members to this and other titles at substantial discounts off the list price.

All book orders must include \$5/£3 per book for postage and handling (SAS members do not pay postage and handling)

### For a free sample copy or Notes for Contributors contact:

Gordon and Breach Science Publishers, Marketing Department, c/o STBS,  
P.O. Box 90, Reading, Berkshire RG1 8JL, UK, or P.O. Box 786, Cooper  
Station, New York, NY 10276, USA

STBS – Distributors for Gordon and Breach Science Publishers



### Gordon and Breach Science Publishers

Switzerland • USA • Japan • UK • France • Germany • Netherlands  
Russia • Singapore • Malaysia • Australia

You could be  
**missing valuable information!**

If you don't subscribe to these leading monthly journals from the Geological Society of America, you are missing valuable, timely research *and* important geological news.

Clip and mail the coupon *today* for a sample copy of our journals and subscription information. GSA members save substantially on subscriptions. Request membership information below.

### GSA BULLETIN

*GSA Bulletin* has been published continuously since its founding in 1888. A reliable, authoritative journal of scientific reports on all aspects of geology worldwide: terrestrial, extraterrestrial, and oceanographic. Edited for geologists in academia, government, industry, and business. *Bulletin* features letters, occasional color illustrations, oversize maps and other inserts, and an annual subject and author index in the December issue. About 140 pages monthly.

#### Subscription Information

*GSA Bulletin* is published monthly. Professional and Student members of the Geological Society of America receive discounted subscription rates. Rates for *nonmembers* residing outside the U.S., Canada, or Mexico: \$180/yr (1992 rates). Contact GSA Subscription Sales for information.

### GEOLOGY

*Geology* is a journal for those with varied interests in the earth sciences. Features concise, provocative articles on current geologic issues and new investigations. Forum, an integral part of this lively journal, provides an arena for stimulating comments and replies on the articles. Edited for geologists in academia, government, industry, and business, it is also popular with university-level students. Features full-color covers each month and advertisements for products and services

relevant to the earth sciences. Annual subject and author index featured in the December issue. About 104 pages monthly.

#### Subscription Information

*Geology* is published monthly. Professional and Student members of the Geological Society of America receive discounted subscription rates. Rates for *nonmembers* residing outside the U.S., Canada, or Mexico: \$150/yr (1992 rates). Contact GSA Subscription Sales for information.

### GSA TODAY

Issues lead off with a "hot-topic" current science article. The *Forum* column allows scientists from around the world to discuss current issues and concerns. Features news about the Society and the geologic community at large, opportunities for fellowships, scholarships, and research funds; legislative updates; letters to the editor; science book reviews; details about all GSA sponsored meetings including registration forms; and advertisements for products and services relevant to the earth sciences including a classified section.

#### Subscription Information

*GSA Today* is published monthly. All GSA members receive *GSA Today* as part of their annual dues. Rates for *nonmembers* residing outside the U.S., Canada, or Mexico: \$46/yr (1992 rates). Contact Subscription Sales for information.



Clip and return to The Geological Society of America

Send me a sample copy and subscription information about these GSA journals.

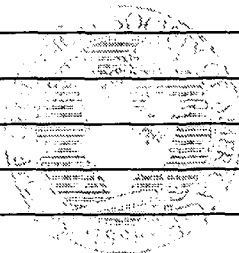
GSA Bulletin  Geology  GSA Today

Send membership information & application so I can save on my subscriptions!

Professional  Student Associate

**Free!**  
Please send  
me the GSA  
publications  
catalog.

Name \_\_\_\_\_  
Address \_\_\_\_\_  
Address \_\_\_\_\_  
City \_\_\_\_\_  
State/Zip/Cntry \_\_\_\_\_



The Geological Society of America, Journals Marketing  
3300 Penrose Place, P.O. Box 9140, Boulder, CO 80301 USA  
303-447-2020, 1-800-472-1988, fax 303-447-1133

## NOTES FOR CONTRIBUTORS

**Contributions** for publication should be addressed to The Editors, *Geological Magazine*, Department of Earth Sciences, Downing Street, Cambridge CB2 3EQ, England, or may be submitted through a member of the Editorial Advisory Board (addresses inside front cover). Rapid Communications should be clearly marked as such on the envelope. Submission implies that the manuscript has not been published previously nor currently submitted for publication elsewhere.

All **contributions**, whether articles, correspondence or reviews, must be sent in triplicate and typed on one side of the paper, with wide margins and double-line spacing throughout. Any minor corrections should be made neatly in the typescript, leaving the margins clear. Contributions should follow the general style of papers in recent issues of the *Magazine*. The author is invited to nominate up to five possible referees, who will not necessarily be used.

**Articles** must be accompanied by a brief, informative rather than indicative, abstract. Headings should be set out clearly but not underlined. Primary headings should be in lower case, at margin, with arabic numeral; subheadings should be numbered 2.a., 2.b., etc., and tertiary headings 2.a.1., 2.a.2. No cross-references should be given by page number, but 'above' and 'below' should be used with the section specified, e.g. Section 2.a.2. The SI system of units should be used. The author should mark in the margin of the manuscript where figures and tables may be inserted. References to points in larger works should, where possible, quote the page reference, e.g. Ager, 1981, p. 102. Authors alone are responsible for the correctness of their references.

**Rapid Communications** should follow the style of articles and must be no more than four printed pages of the *Magazine* (approximately 5000 work-equivalents) including an abstract of no more than 100 words. These contributions will be dealt with by a streamlined schedule and should appear within six months from receipt. To meet this schedule, authors will be required to make revisions with minimal delay.

**Discussions** of papers which have already appeared in the *Magazine* are welcomed, subject to the four-page limit.

**Tables** should be typed with double-line spacing on sheets separate from the running text. Each table must have a caption that will make the data in the table intelligible without reference to the text.

**Illustrations** should be submitted at  $1\frac{1}{2} \times$  size to be published. The **Author's** name and **figure** number should be clearly marked on the **back** of each piece of artwork. Figures will preferably be either

single column (80mm) or double column (169mm) width when printed. The height of figure can vary in either width up to full print area height (240 mm). Illustrations should have **scale bars**, not ' $\times 40$ '. Redrafting may be required by the editors if major savings in print area can be achieved without loss of information. **Detailed maps** or **multiple logs** may well require a whole page and the size of the lettering should match the necessary reduction. Where necessary break a figure into two facing pages; **folding figures** will not be accepted. **Landscape figures** should have no lettering upside down on the final printed page. Avoid where possible gross disparities in lettering size on the drawing. **See figure below for optimum size of original and final lettering size.** Boxes of **ornament** should be explained within the figure, not in the caption. Figures composed of **photographs** should be glossy prints presented at publication scale. Each component part should be named with a lower-case letter and given a scale bar. Photographic artwork is numbered as part of the sequence of figures, not as separate plates. The *Magazine* will be able to publish a limited number of free **colour plates** each year; the editors will decide which plates to accept on their scientific merit. Authors submitting colour plates are asked to give detailed reasons why colour is necessary. Duplicates of illustrations should be sent, and may be prints or, preferably, photocopies reduced to final size. Figure captions must be typed with double-line spacing on sheets separate from the running text.

**References** must be double-spaced and spelt out in full, e.g.

BROOKS, M. & JAMES, D. G. 1975. The geological results of seismic refraction surveys in the Bristol Channel, 1970–73. *Journal of the Geological Society* **131**, 163–82.

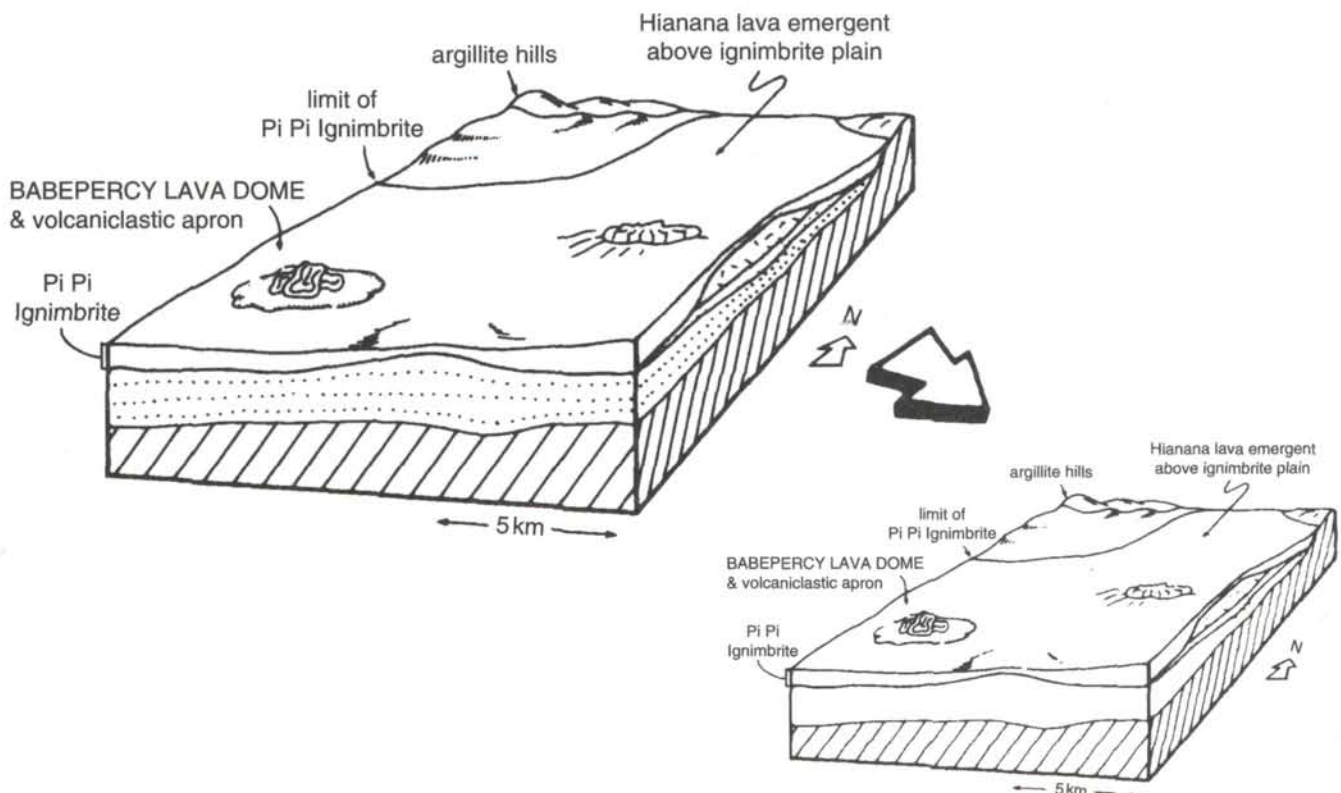
Books should be cited as:

AGER, D. V. 1981. *The Nature of the Stratigraphical Record*, 2nd ed. London: Macmillan, 122 pp.

BOTT, M. H. P. 1973. The evolution of the Atlantic north of the Faroe Islands. In *Implications of Continental Drift to the Earth Sciences*, vol. 1 (eds D. H. Tarling and S. N. Runcorn), pp. 175–89. London, New York: Academic Press.

Unpublished work should normally be referred to in the text in parentheses as, for example, 'private communication' or 'unpub. Ph.D. thesis, Univ. London, 1988', and not included in the reference list unless in the press.

Fifty offprints of each paper will be provided free of charge. Additional offprints may be purchased according to a set scale of charges if ordered when the proofs are returned. Authors of Rapid Communications will receive 10 free offprints; no further copies may be purchased.





# Geological Magazine

## CONTENTS

Introduction to the Welsh Basin thematic issue WOODCOCK, N. H. & FLETCHER, C. J. N.	513–514
Some constraints on the form of the Welsh Basin from regional gravity and aeromagnetic data, with particular reference to Central Wales CARRUTHERS, R. M., FLETCHER, C. J. N., McDONALD, A. J. W. & EVANS, R. B.	515–522
Interpretation of the regional gravity and magnetic surveys of Wales, using shaded relief and Euler deconvolution techniques McDONALD, A. J. W., FLETCHER, C. J. N., CARRUTHERS, R. M., WILSON, D. & EVANS, R. B.	523–531
Palaeozoic palaeomagnetic studies in the Welsh Basin – recent advances CHANNELL, J. E. T., McCABE, C., TORSVIK, T. H., TRENCH, A. & WOODCOCK, N. H.	533–542
Cambrian and early Tremadoc rocks of the Llangynog inlier, Dyfed, South Wales COPE, J. C. W. & RUSHTON, A. W. A.	543–552
The Habberley Formation: youngest Tremadoc in the Welsh Borderlands FORTEY, R. A. & OWENS, R. M.	553–566
Geochemical discrimination of Silurian mudstones according to depositional process and provenance within the Southern Welsh Basin BALL, T. K., DAVIES, J. R., WATERS, R. A. & ZALASIEWICZ, J. A.	567–572
Heavy minerals as a guide to turbidite provenance in the Lower Palaeozoic Southern Welsh Basin: a pilot study MORTON, A. C., DAVIES, J. R. & WATERS, R. A.	573–580
Geochemical and isotope composition of pebbles from the Caban Conglomerate Formation and their bearing on the source of Welsh Palaeozoic sedimentary rocks EVANS, J. A.	581–587
Preliminary report on the geochemistry and mineralogy of the Nod Glas and related sediments (Ordovician) of Wales TEMPLE, J. T. & CAVE, R.	589–594
A fault-controlled depositional model for the Aberystwyth Grits turbidite system WILSON, D., DAVIES, J. R., WATERS, R. A. & ZALASIEWICZ, J. A.	595–607
Welsh Basin 'contourites' reinterpreted as fine-grained turbidites: the Grogal Sandstones SMITH, R. D. A. & ANKETELL, J. M.	609–614
Petrogenesis of Ordovician igneous rocks in the southern part of the Welsh Basin BEVINS, R. E., LEES, G. J. & ROACH, R. A.	615–624
The use of kink bands to constrain fault displacements: an example from the Bala Lineament, Wales PRATT, W. T.	625–632
<b>RAPID COMMUNICATION</b>	
Seismic reflection test on the granite of the Skye Tertiary igneous centre GOULTY, N. R., LEGGETT, M., DOUGLAS, T. & EMELEUS, C. H.	633–636
<b>DISCUSSION</b>	
Discussion on the fluctuating oceanographic conditions and glacial control across the Cenomanian–Turonian boundary Comment: D. ULIČNÝ	637–638
Reply: C. V. JEANS	638–640
<b>REVIEWS</b>	641–653
<b>PUBLICATIONS RECEIVED</b>	655–656

© Cambridge University Press 1992

Printed in Great Britain by the University Press, Cambridge