

# Prevention



The Prevention Course in HAI Knowledge and Control (Prevention CHKC) educates frontline personnel in essential healthcare-associated infection prevention practices. Modules are online, concise, interactive, and compelling.



## MODULES



Clean Hands



Clean Environment



Occupational Health



Diagnostic & Antibiotic Stewardship



Precautions & PPE



CAUTI & CLABSI



Pneumonia



MRSA & MDROs



*C. difficile*



Surgical Site Infections

Prevention CHKC is free for SHEA members and \$25 for non-members.

*The Prevention Course in Healthcare-Associated Infection Knowledge and Control (Prevention CHKC) is supported in full by an educational grant from Becton, Dickinson and Company (BD).*



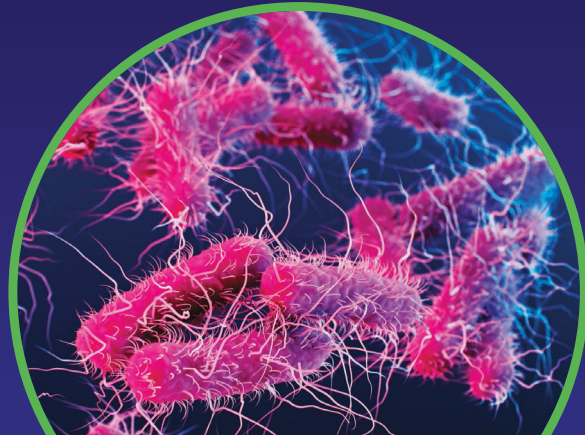
LearningCE  
SHEA

ONLINE EDUCATION CENTER

PreventionCHKC.org

ASHE

# Antimicrobial Stewardship & Healthcare Epidemiology



The Society for Healthcare Epidemiology (SHEA) and Cambridge University Press are pleased to announce the launch of a new, open access journal, *Antimicrobial Stewardship and Healthcare Epidemiology (ASHE)*.

*ASHE* will publish submissions of original research that will contribute to the fields of antimicrobial stewardship, healthcare epidemiology and infection prevention with the goal of improving healthcare safety globally.

[cambridge.org/ashe](https://doi.org/10.1017/ehp.2020.1379)



CAMBRIDGE  
UNIVERSITY PRESS