

journals.cambridge.org

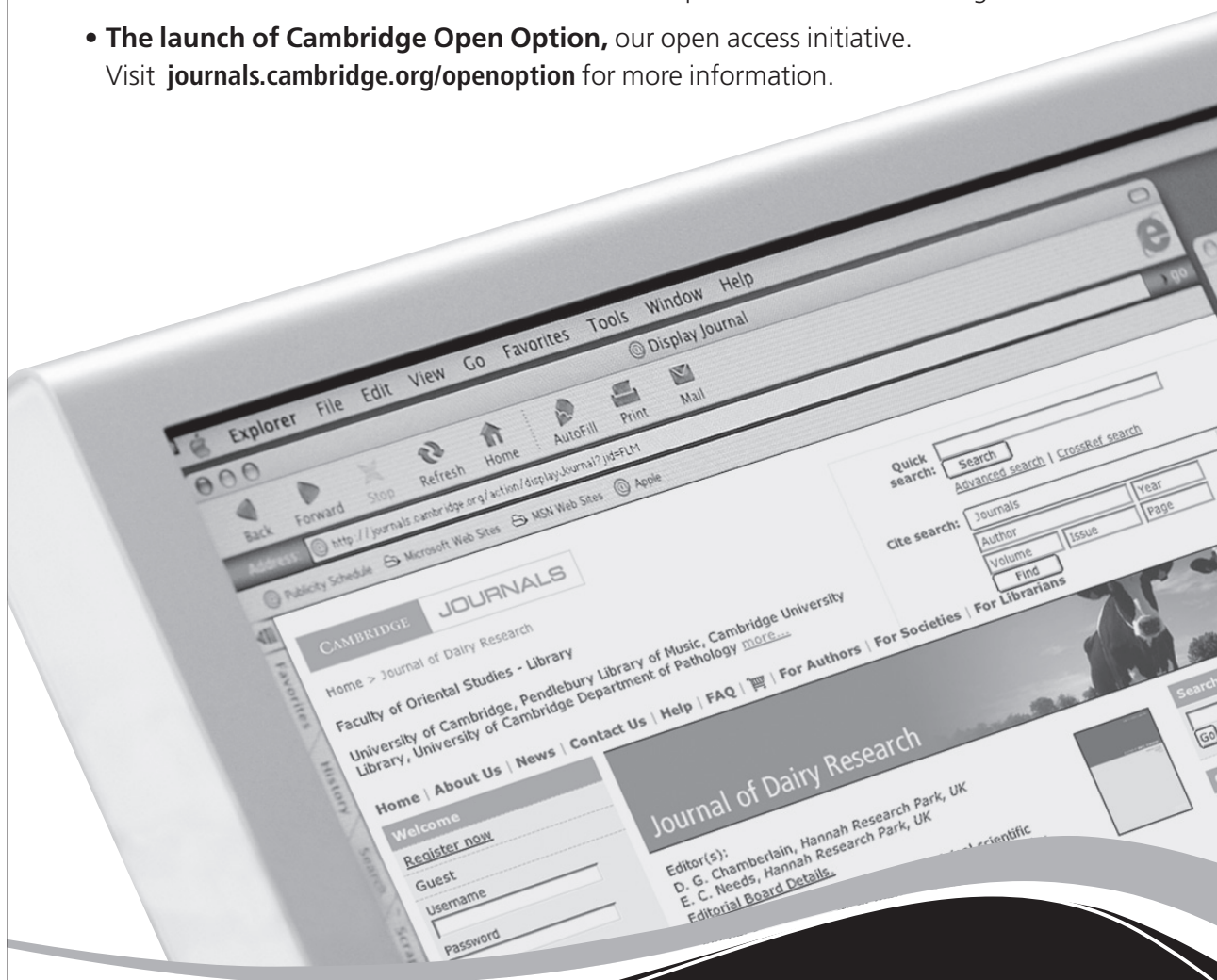
Advancing research. Increasing access.

Informed by detailed consultation with the library and research communities, we are constantly developing our industry-leading online journals platform.

Some recent advances include:

- **Refreshed site design**, facilitating rapid access to the most relevant content.
- **New advanced search interface** and a more detailed, fielded quick search function.
- **Enriched content** in the form of multimedia companions and editorial blogs.
- **The launch of Cambridge Open Option**, our open access initiative.

Visit journals.cambridge.org/openoption for more information.



CAMBRIDGE

JOURNALS



Animal Health Research Reviews

Published in collaboration with the Conference of Research Workers in Animal Diseases

Animal Health Research Reviews

is available online at
journals.cambridge.org/ahr

**To subscribe contact
Customer Services**

in Cambridge:

Phone +44 (0)1223 326070
Fax +44 (0)1223 325150
Email journals@cambridge.org

in New York:

Phone (845) 353 7500
Fax (845) 353 4141
Email
subscriptions_newyork@cambridge.org

Editor-in-Chief

C. Gyles, University of Guelph, Canada

Animal Health Research Reviews provides an international forum for the publication of reviews and commentaries on all aspects of animal health. The journal covers all facets of animal health and science, including but not limited to both infectious and non-infectious diseases in domestic and wild animals.

Price information is available at
journals.cambridge.org/ahr

Free email alerts

Keep up-to-date with new material –
sign up at journals.cambridge.org/register

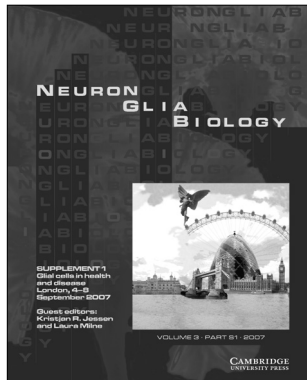
For a free online sample visit
journals.cambridge.org/ahr



CAMBRIDGE
UNIVERSITY PRESS

CAMBRIDGE

JOURNALS



Neuron Glia Biology

Neuron Glia Biology

available online at:
<http://journals.cambridge.org/ngb>

To subscribe contact Customer Services

in Cambridge:

Phone +44 (0)1223 326070
Fax +44 (0)1223 325150
Email journals@cambridge.org

in New York:

Phone +1 (845) 353 7500
Fax +1 (845) 353 4141
Email
subscriptions_newyork@cambridge.org

Editor-in-Chief

R. Douglas Fields,
National Institutes of Health, Bethesda, USA

Stimulated by recent advances in neuroscience, *Neuron Glia Biology* serves the expanding need for a scientific journal recognizing that two-way communication between neurons and glia is essential for nervous system function. In focusing on cell-cell interactions in the nervous system, this journal offers an expanded scope that bridges what have traditionally been regarded as separate scientific disciplines.

Price information is available at:
<http://journals.cambridge.org/ngb>

Free email alerts

Keep up-to-date with new material – sign up at
<http://journals.cambridge.org/alerts>

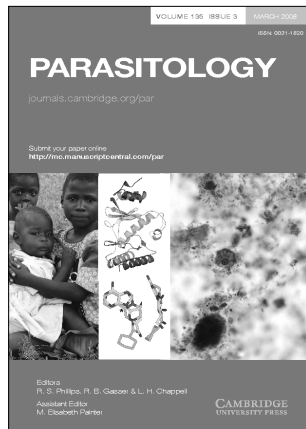
For free online content visit:
<http://journals.cambridge.org/ngb>



CAMBRIDGE
UNIVERSITY PRESS

CAMBRIDGE

JOURNALS



Parasitology

Editor

L. H. Chappell, University of Aberdeen, UK
Robin B. Gasser, University of Melbourne, Australia
R. S. Phillips, University of Glasgow, UK

Parasitology

is available online at
journals.cambridge.org/par

To subscribe contact Customer Services

in Cambridge:

Phone +44 (0)1223 326070
Fax +44 (0)1223 325150
Email journals@cambridge.org

in New York:

Phone (845) 353 7500
Fax (845) 353 4141
Email
subscriptions_newyork@cambridge.org

Parasitology publishes original papers on all aspects of parasitology and host-parasite relationships, ranging from the latest discoveries in biochemical and molecular biology to ecology and epidemiology in the context of the medical, veterinary and biological sciences.

Two specially commissioned issues with important topics in parasitology, including the proceedings of the symposia of the British Society for Parasitology, are included in the annual subscription.

**Price information is available at
journals.cambridge.org/par**

Free email alerts

Keep up-to-date with new material –
sign up at journals.cambridge.org/register

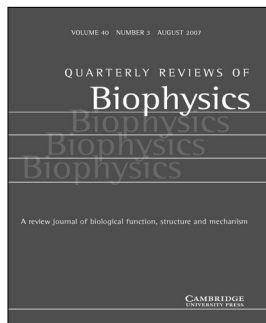
For a free online sample visit
journals.cambridge.org/par



CAMBRIDGE
UNIVERSITY PRESS

CAMBRIDGE

JOURNALS



Quarterly Reviews of Biophysics

Quarterly Reviews of Biophysics

is available online at
journals.cambridge.org/qrb

To subscribe contact Customer Services

in Cambridge:
Phone +44 (0)1223 326070
Fax +44 (0)1223 325150
Email journals@cambridge.org

in New York:
Phone (845) 353 7500
Fax (845) 353 4141
Email
subscriptions_newyork@cambridge.org

Editors

Bengt Nordén, Chalmers University of Technology, Göteborg, Sweden
Gerhard Wagner, Harvard Medical School, USA
David M.J. Lilley, FRS, University of Dundee, UK
Andrew G. W. Leslie, FRS, MRC Laboratory of Molecular Biology, Cambridge, UK
Eduardo Perozo and Steve A.N. Goldstein, Co-ordinating Editors, University of Chicago, USA

Quarterly Reviews of Biophysics covers the whole field of biophysics, from ion channels to DNA topology and from X-ray diffraction to NMR. The journal has a worldwide reputation as a forum for general and specialised communication between biophysicists working in different areas.

**Price information is available at
journals.cambridge.org/qrb**

Free email alerts

Keep up-to-date with new material –
sign up at journals.cambridge.org/register

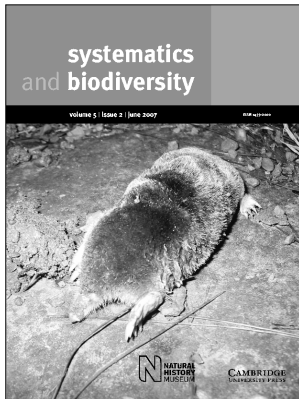
For a free online sample visit
journals.cambridge.org/qrb



CAMBRIDGE
UNIVERSITY PRESS

CAMBRIDGE

JOURNALS



Systematics and Biodiversity

Published for The Natural History Museum

Systematics and Biodiversity

is available online at
journals.cambridge.org/sys

**To subscribe contact
Customer Services**

in Cambridge:
Phone +44 (0)1223 326070
Fax +44 (0)1223 325150
Email journals@cambridge.org

in New York:
Phone (845) 353 7500
Fax (845) 353 4141
Email
subscriptions_newyork@cambridge.org

Editor-In-Chief

Elliot Shubert, The Natural History Museum, UK

Systematics and Biodiversity is an international life science journal devoted to whole-organism biology, especially systematics and taxonomic biodiversity. It emphasizes the importance and multi-disciplinary significance of systematics. It records the diversity of organisms through descriptive taxonomic papers. Coverage also includes relevant theory and methodology, and conservation biology.

Price information is available at
journals.cambridge.org/sys

Free email alerts

Keep up-to-date with new material –
sign up at journals.cambridge.org/register

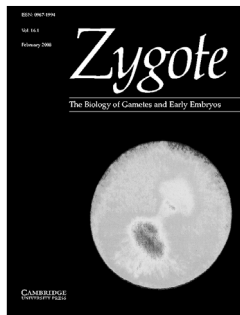
For a free online sample visit
journals.cambridge.org/sys



CAMBRIDGE
UNIVERSITY PRESS

CAMBRIDGE

JOURNALS



Zygote

The Biology of Gametes and Early Embryos

Zygote

is available online at
journals.cambridge.org/zyg

To subscribe contact Customer Services

in Cambridge:

Phone +44 (0)1223 326070
Fax +44 (0)1223 325150
Email journals@cambridge.org

in New York:

Phone (845) 353 7500
Fax (845) 353 4141
Email
subscriptions_newyork@cambridge.org

Editor-in-Chief

Brian Dale, Centre for Reproductive Biology, Clinica Villa del
Sole, Napoli, Italy

North American Editor

Jacques Cohen, Saint Barnabas Medical Center, USA

Asian Pacific Editor

Norio Suzuki, Hokkaido University, Japan

Zygote publishes original, high-quality papers, short communications, topical review articles and a Forum section, where controversial topics are discussed. Studies on plants, invertebrates, lower vertebrates, mammals and humans at the molecular and cellular levels are published, leading to a unique multidisciplinary publication.

Price information is available at
[***journals.cambridge.org/zyg***](http://journals.cambridge.org/zyg)

Free email alerts

Keep up-to-date with new material –
sign up at [***journals.cambridge.org/register***](http://journals.cambridge.org/register)

For a free online sample visit
[*journals.cambridge.org/zyg*](http://journals.cambridge.org/zyg)



CAMBRIDGE
UNIVERSITY PRESS

Genetics Research

INSTRUCTIONS FOR CONTRIBUTORS

Genetics Research publishes papers on all aspects of the genetics of complex traits. Excellent papers in other areas of genetics are also welcome. Specifically, the journal publishes empirical and theoretical studies on evolutionary and population genetics, quantitative and statistical genetics, genomics and systems genetics, and molecular and developmental genetics. On the empirical side papers reporting studies that have broad implications using a range of organisms, from well-established genetic model organisms (flies, *C. elegans*, mice, yeast, Arabidopsis); agricultural species (cows, pigs, sheep, chickens, rice, maize, wheat) to humans are encouraged. In addition to research articles the journal welcomes reviews that deal with any field within its scope.

Contributions are welcomed from scientists of all nationalities but must be written in English. Submission of a paper will be taken to imply that it is unpublished and is not being considered for publication elsewhere. Papers should be as concise as clarity permits, and illustrations should be restricted to the *minimum needed*. *Short Papers* are designed for concisely written reports of work for which rapid publication is considered desirable. Such papers will normally be published within three months of receipt in acceptable form. They should not exceed 4 pages of print in length, and should include a summary.

Submissions These should be made via the journal's online submission system at <http://www.editorialmanager.com/genetics>. They should be typed in font size 12 and double-spaced. The title should ordinarily identify the organism. The address of the laboratory at which the work was carried out will be printed with the authors' names at the head of the paper, and changes of address may be added in footnotes. A footnote to the title page should also give the name and address to whom reprint requests may be made. Sources of financial support should be included with other acknowledgements at the end of the text. The title page of the typescript should include a short title for running headlines (limited to 50 letters and spaces), and the name and address of the author (or his proxy) to whom the proofs are to be sent, under the heading: *Proofs to be sent to . . .* Main headings should be typed in capitals and (except summary and references) numbered consecutively. Subheadings should be typed in lower case, and italicized except for those words and symbols which would be italicized in the text. Subheadings should be numbered (i), (ii), etc., within each main heading.

Summary The summary will be printed at the beginning of the paper. It should give a concise abstract of the significant content and conclusions of the paper, in a form suitable for abstracting journals to use, and should not exceed 250 words.

Illustrations All illustrations, including photographs, diagrams, graphs etc. are to be labelled consecutively Figure 1, 2 . . . according to their relative positions in the text. Each figure should have a legend to be printed underneath it. Photographs should also be supplied by post as unmounted glossy prints, with

a sketch or separate set to show the arrangement required when several photographs are to form one figure. The names of the authors and the orientation of the figure should be indicated on the back of each photograph. *Diagrams* should be about twice the size of the printed figure, but not larger than 305×203 mm (12×8 inches), unless exceptionally complicated, and the thickness of lines and size of points should be determined accordingly.

Tables Each table should be typed on a separate sheet of paper and its approximate position in the text indicated on the typescript. Each should be numbered and carry an appropriate title. The table should be designed, whenever possible, to be printed in the normal orientation of the text. The data should be grouped so as to make the use of rules unnecessary, for they will only be included at the Editor's discretion. Table footnotes should ordinarily employ the symbols *, †, ‡, §, ||, ¶, **, etc., in that order.

Symbols Gene and mathematical symbols should generally be printed in italics, matrices in boldface. Note that '+' as the symbol for a wild-type allele should not be italicized.

Nomenclature Wherever possible, standardized nomenclature should be employed. The author should refer to the following publications for guidance: Novick *et al.* (*Bacteriological Reviews* **40**, 168–189) for plasmids; O'Brien (Ed.), *Genetic Maps* **6**, Cold Spring Harbor 1993, for information on most species and recent gene lists.

References should follow the normal usage in the journal. In the list of references at the end of the paper, *both titles of articles and names of periodicals* should be written out in full.

Distribution of Reagents and Deposition of Sequences Manuscripts will only be accepted for publication in *Genetics Research* on the understanding that protein and nucleic acid sequence data is deposited in a suitable public database, and polymorphism data is deposited in HGBASE. The corresponding accession numbers must be included in the paper. Authors must also be willing to distribute freely, for academic research, any new strains, clones or antibodies that they describe.

Proofs Authors will be advised by email when to download their proofs from the Cambridge University Press website. These proofs, after correction, should be returned to the Executive Editor. Excessive alterations, other than corrections of printers' errors, may be disallowed or charged to the author. Corrections should be made using the symbols in British Standard 1219: 1958, or its shortened version B.S. 1219C: 1958.

Offprints Authors will be provided with a free pdf of their article and offprints may be ordered in using form sent out with proofs, provided this is returned within fourteen days of receipt.

This journal issue has been printed on FSC-certified paper and cover board. FSC is an independent, non-governmental, not-for-profit organization established to promote the responsible management of the world's forests. Please see www.fsc.org for information.

Cambridge University Press

The Edinburgh Building, Cambridge CB2 8RU, United Kingdom
32 Avenue of the Americas, New York, NY 10013–2473, USA
477 Williamstown Road, Port Melbourne, VIC 3207, Australia
Ruiz de Alarcón 13, 28014 Madrid, Spain
Dock House, The Waterfront, Cape Town 8001, South Africa

Printed in the United Kingdom at the University Press, Cambridge

GENETICS RESEARCH

CONTENTS

RESEARCH PAPERS

- | | | | |
|---|-----|---|-----|
| <p>Reconsideration for conservation units of wild <i>Primula sieboldii</i> in Japan based on adaptive diversity and molecular genetic diversity
Yoshida, Y., Honjo, M., Kitamoto, N. & Ohsawa, R.</p> | 225 | <p>Enhanced fixation and preservation of a newly arisen duplicate gene by masking deleterious loss-of-function mutations
Tanaka, K.M., Takahasi, K.R. & Takano-Shimizu, T.</p> | 267 |
| <p>Variation in sex peptide expression in <i>D. melanogaster</i>
Smith, D.T., Hosken, D.J., Ffrench-Constant, R.H. & Wedell, N.</p> | 237 | <p>Measuring the degree of starshape in genealogies – summary statistics and demographic inference
Lohse, K. & Kelleher, J.</p> | 281 |
| <p>Targeted gain-of-function screening in <i>Drosophila</i> using GAL4-UAS and random transposon insertions
Zhong, J. & Yedvobnick, B.</p> | 243 | <p>Relative mutation rates of each nucleotide for another estimated from allele frequency spectra at human gene loci
Park, L.</p> | 293 |
| <p>Increased litter size and super-ovulation rate in congenic C57BL mice carrying a polymorphic fragment of NFR/N origin at the <i>Fecq4</i> locus of chromosome 9
Liljander, M., Andersson, Å., Holmdahl, R. & Mattsson, R.</p> | 259 | <p>BOOKS RECEIVED</p> | 305 |