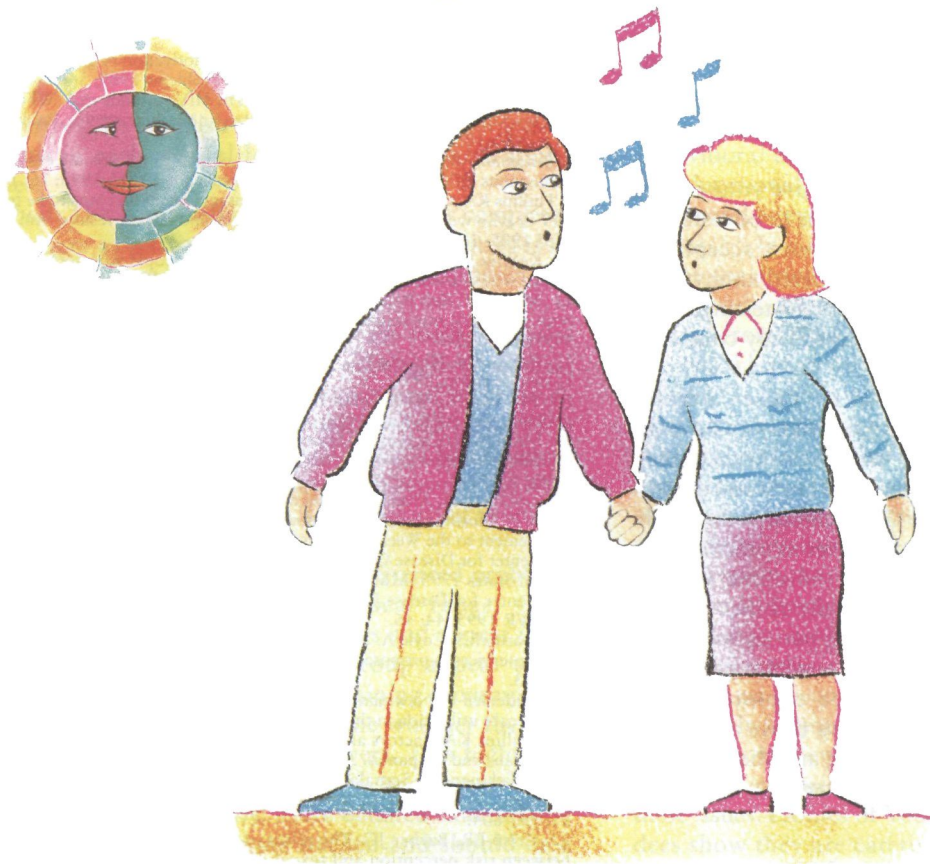


# Efficacy and tolerability ... working in harmony.



## A new dawn in the treatment of Schizophrenia.

- Effective in the treatment of both positive and negative symptoms of schizophrenia<sup>1</sup>
- Improves mood and reduces hostility and aggression<sup>2/3</sup>
- Incidence of EPS no different than placebo across the full dose range<sup>4</sup>
- Limited weight gain (approximately 50% less than that of olanzapine)<sup>5/6</sup>

 **Seroquel**  
quetiapine

### Seroquel®

Abridged prescribing information (for full details see summary of product characteristics). Presentations: Film coated tablets containing 25mg, 100mg or 200mg of quetiapine (as quetiapine fumarate). Uses: Treatment of schizophrenia. Dosage and Administration: Adults: Initial titration from 50mg to 300mg over first 4 days. From day 4 onwards the dose should be titrated to the usual effective dose of 300-450 mg/day. Dose range 150 to 750 mg/day. Elderly: Rate of dose titration may need to be slower and daily therapeutic dose lower than in younger patients. Children & Adolescents: Not evaluated. Renal Impairment: No dose adjustment required. Hepatic Impairment: Use with caution. Patients should be started on 25 mg/day and increased by 25 - 50 mg/day until an effective dosage. Contra-indications: Hypersensitivity to quetiapine fumarate or excipients. Concomitant administration of cytochrome P450 inhibitors, such as HIV-protease inhibitors, azole-antifungal agents, erythromycin, clarithromycin and nefazodone. Precautions and warnings: Known cardiovascular disease, cerebrovascular disease, or other conditions predisposing to hypotension. Possible initial orthostatic hypotension and syncope during the dose titration period. Patients with a history of seizures. If signs and symptoms of tardive dyskinesia appear dose reduction should be considered. In the event of neuroleptic malignant syndrome discontinue treatment. Undesirable effects: Mild asthenia, dry mouth, rhinitis, dyspepsia or constipation. Mild somnolence and limited weight gain during initial treatment period. Leucopenia, neutropenia, eosinophilia. Elevations in serum transaminase (ALT, AST) or g-GT levels and small elevations in non-fasting serum triglyceride and total cholesterol levels. Dose related increases in thyroid hormone levels particularly total T4 and free T4. Interactions: Use with caution with other centrally acting drugs and alcohol. CYP3A4 inhibitors such as ketoconazole are contraindicated. Grapefruit juice, phenytoin, thiothiazine. Pregnancy & lactation: Safety and efficacy not established. Effects on ability to drive: Patients should be advised not to drive or operate machinery until individual susceptibility is known. Pharmaceutical precautions: Do not store above 30°C. Legal category: POM. Product Authorisation Numbers: Seroquel 25mg PA51/71/1; Seroquel 100mg PA51/71/2; Seroquel 200mg PA51/71/3; Seroquel starter pack PA51/71/4. Product authorisation holder: Zeneca Ltd., Macclesfield, Cheshire, United Kingdom SK10 4TG. Further information on request from: AstraZeneca Pharmaceuticals (Ireland) Limited, College Park House, 20 Nassau Street, Dublin 2. Tel. 01 609 7100; Fax. 01 679 6650. Date of Preparation: March 2000.

### References:

1. Peuskens & Link 1997 Acta Psychiatr Scand 1997 96(4) pp 265 - 273
2. Hellewell & Goldstein 1998 Schizophrenia Research 1998 29 (1/2) pp 154 - 155 Abs
3. Data on File, AstraZeneca
4. Arvanitis et al. Biological Psychiatry 1997;42:233-246
5. Kinon et al 1998 XX1st CINP Congress, Glasgow, Scotland 1998

AstraZeneca 

