

## Coming Events

### 2019

#### ISPM 2019 – International Scanning Probe Microscopy Conference

May 26–29, 2019  
Louvain-la-Neuve, Belgium  
<http://uclouvain.be/en/research-institutes/libst/ispm-2019.html>

#### Lehigh Microscopy School

June 2–7, 2019  
Bethlehem, PA  
[www.lehigh.edu/microscopy](http://www.lehigh.edu/microscopy)

#### MAS Topical Conference: QMA 2019

June 24–27, 2019  
Minneapolis, MN  
[www.microbeamanalysis.eu/events/event/58-mas-topical-conference-qma-2019](http://www.microbeamanalysis.eu/events/event/58-mas-topical-conference-qma-2019)

#### mmc2019: Microscience

Microscopy Congress 2019  
July 1–4, 2019  
Manchester, UK  
[www.mmc-series.org.uk](http://www.mmc-series.org.uk)

#### Gordon Research Conference - Tissue Microstructure Imaging

July 7–12, 2019  
South Hadley, MA  
[www.grc.org/tissue-microstructure-imagingconference/2019](http://www.grc.org/tissue-microstructure-imagingconference/2019)

#### NextTEM: Next-Generation

Transmission Electron Microscopy Workshop  
August 4, 2019  
Portland, OR  
[www.microscopy.org/MandM/2019/program/NextTEM\\_2019\\_Announcement.pdf](http://www.microscopy.org/MandM/2019/program/NextTEM_2019_Announcement.pdf)

#### Microscopy & Microanalysis 2019

August 4–8, 2019  
Portland, OR  
[www.microscopy.org](http://www.microscopy.org)

### 2020

#### Microscopy & Microanalysis 2020

August 2–6, 2020  
Milwaukee, WI  
[www.microscopy.org](http://www.microscopy.org)

### 2021

#### Microscopy & Microanalysis 2021

August 1–5, 2021  
Pittsburgh, PA  
[www.microscopy.org](http://www.microscopy.org)

### 2022

#### Microscopy & Microanalysis 2022

July 31–August 4, 2022  
Portland, OR  
[www.microscopy.org](http://www.microscopy.org)

### 2023

#### Microscopy & Microanalysis 2023

July 24–28, 2023  
Minneapolis, MN  
[www.microscopy.org](http://www.microscopy.org)

### 2024

#### Microscopy & Microanalysis 2024

July 28–August 1, 2024  
Cleveland, OH  
[www.microscopy.org](http://www.microscopy.org)

#### More Meetings and Courses

Check the complete calendar near the back of this magazine.

## Carmichael's Concise Review

# Evidence of an Organism Moving 2.1 Billion Years Ago!

Stephen W. Carmichael

Mayo Clinic, Rochester, MN 55905

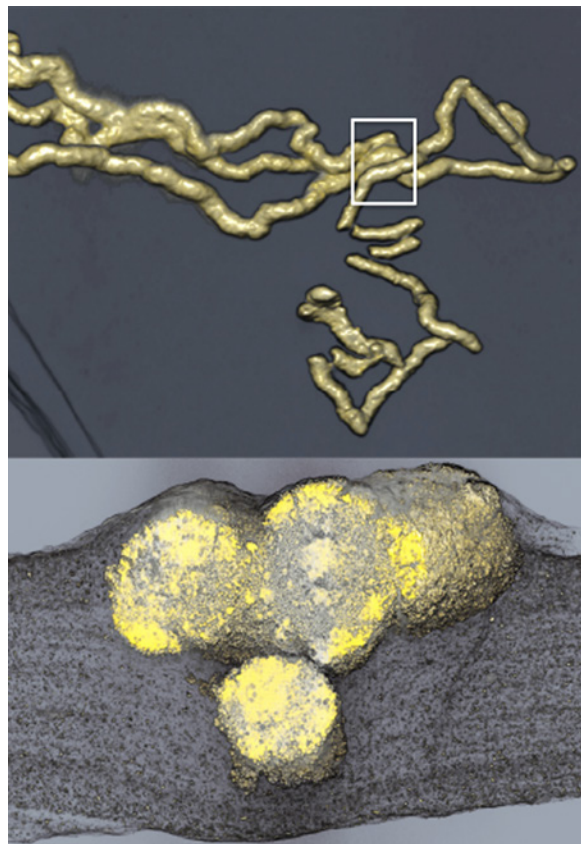
[carmichael.stephen@mayo.edu](mailto:carmichael.stephen@mayo.edu)

Until now the earliest evidence of moving life forms was from half a billion years ago. In an intriguing new study by Abderrazak El Albani, Donald Canfield, and a large international scientific team, evidence is presented that could suggest moving organisms existed from a much earlier time [1]. Examining exquisitely preserved fossils from the Francevillian Basin in Gabon, Africa, El Albani et al. found string-shaped formations or structures up to 6 mm in diameter and extending up to 170 mm through the layers (Figure). These fossils are thought to be 2.1 billion years old and were formed at that time in an oxygenated shallow-marine environment. Oxygen levels could have been high at that time and then became much lower, consistent with life forms at this time later dying out.

El Albani et al. used scanning electron microscopy (SEM) in combination with microtomographic, geochemical, and sedimentologic analyses. It is suggested that the structures underwent fossilization during early changes to sedimentary rock near the sediment-water interface. Morphological and 3D tomographic reconstructions suggest that the structures were produced by a multicellular or syncytial organism that was able to migrate laterally and vertically to reach food resources. El Albani et al. suggested that a possible modern analog could be something similar to colonial amoeba or slime molds, organisms that normally live separately.

An interesting series of studies were done using X-ray microcomputed tomography (micro-CT). Analysis of these images revealed the presence of string-shaped structures within the layers of the fossils. Some of these structures were close to layers of pyrite (iron sulfate, commonly called fool's gold) suggesting an association with organic-rich mats where microbial sulfate reduction was enhanced. This and other features indicate compaction of soft, fine-grained sediment around a relatively rigid object and show that the strings were in place and mineralized when the sediments were still compacting.

Combined SEM back-scattered electron imaging and energy-dispersive X-ray



**Figure:** Micro-CT-based reconstructions of string-shaped structures from the Francevillian Series, Gabon. (top) Contorted strings; box denotes location of the cross section shown in bottom image; image width = 19 cm. (bottom) Virtual cross section of contorted strings; image width = 2 cm.

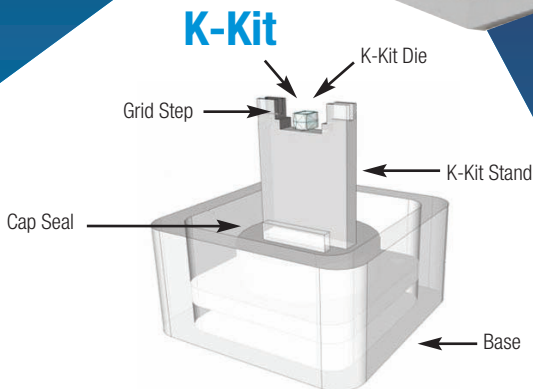
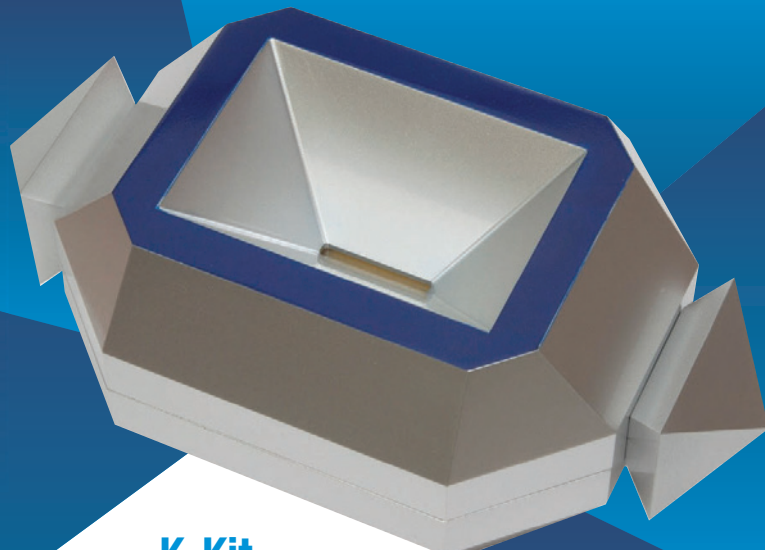
EMS has it!...

# K-Kit

## A Specimen Holder for Liquid Sample Analysis in TEM

K-kits are sample holders designed to facilitate convenient TEM observation of liquid samples, allowing nano-objects, aggregates, and agglomerates (NOAAs) in liquid samples to be characterized.

With vacuum compatible sealing of liquids in electron-transmitting thickness, K-kits are micro reaction chambers for countless experiments in materials, chemical, and biological research.



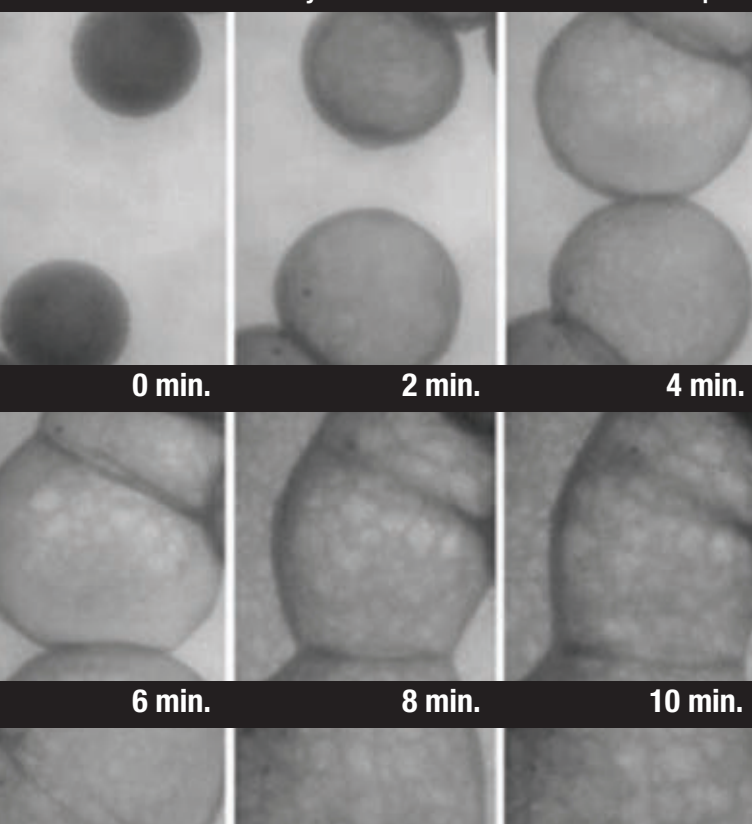
### Features

- Applicable for most TEM holder brands
- Strong structural reliability under vacuum
- Sealing glue compatible to many solvents
- Disposable
- Free of cross-contamination
- Easy to use



K-Kit Tool Box

In-Situ Dynamic Observation of NOAAs in Liquid



please contact us for more information...

## Electron Microscopy Sciences

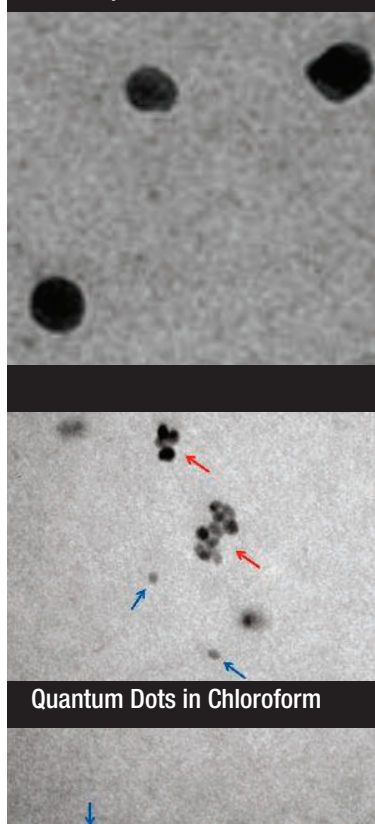
P.O. Box 550 • 1560 Industry Rd.  
Hatfield, PA 19440  
Tel: (215) 412-8400  
Fax: (215) 412-8450  
email: info@emsdiasum.com  
or stacie@ems-secure.com

[www.emsdiasum.com](http://www.emsdiasum.com)

follow us on...



Protein particles in Abraxane®



Quantum Dots in Chloroform

spectrometry analysis also indicate contrasting textures and mineralogical composition within and outside the strings. Very few minerals such as quartz are scattered within the pyrite strings, whereas grains of clay show signs of growth within pores.

The overall morphology of the Francevillian structures suggested to El Albani et al. an organism that was able to aggregate and migrate in a similar fashion to that of cellular slime molds, leaving a mucus trail behind. However there are two significant differences between the Francevillian structures and those formed by modern slime molds. First, slime molds live in soils, not in marine sediment. Second, slime molds are significantly smaller than these structures. El Albani et al. rather suggest an analogous situation wherein amoeba-like organisms with the capability to aggregate in a similar fashion could have been responsible for producing complex fossilized structures.

El Albani et al. point out that it remains uncertain whether the Francevillian string-like structures represent a failed natural experiment or a prelude to subsequent evolutionary innovations. If their interpretation is correct, these findings challenge the conventional version of the evolution of life. It will be interesting to see if results from independent groups support this new conclusion or refute it.

## References

- [1] A El Albani et al., *Proc Nat Acad Sci* 116(9) 2019 3431–36.
- [2] The author gratefully acknowledges Dr. Abderrazal El Albani for reviewing this article.

MT

## MRS-6

**We are ISO-9000 certified and ISO-17025 accredited  
Microscopy Calibration Standard**

**Now you can calibrate better from 1,000X to 1,000,000X!**

This is our fifth generation, traceable, magnification reference standard for all types (SEM, FESEM, Optical, STM, AFM, etc.) of microscopy. The MRS-6 has multiple X and Y pitch patterns ranging from 80nm ( $\pm 3$  nm) to 2 $\mu$ m and 3 bar targets from 80nm to 3 $\mu$ m. There is also a STM test pattern. Definition of the 80 nm pitch pattern is excellent.

MRS-6 MAGNIFICATION/RESOLUTION STANDARD - WWW.GELLERMICRO.COM  
S/N: MRS-6-2 SEPTEMBER 2013

**GELLER  
MICROANALYTICAL  
LABORATORY, Inc.**

426e BOSTON ST., TOPSFIELD, MA 01983-1216  
TEL: 978 887-7000 FAX: 978-887-6671  
www.GellerMicro.com

Buying pre-owned microscopes doesn't need to be risky. For more than 15 years, TSS has supported customers with a large inventory of meticulously remanufactured electron microscopes, plus accessories and spare parts. And our experienced team of engineers works with you to assure your happiness with your "new" microscope. Just like the OEM, we offer full support after the sale.

## Reunite with a Former Favorite that Still has Purpose

Browse our inventory online or contact us if you need parts or service support for your microscopes, even if you didn't purchase from us.

+1 866 TSS 2003  
[www.tssmicroscopy.com](http://www.tssmicroscopy.com)

electron microscopes **re-visioned**



# The velocity for world-class results



## Introducing the World's Fastest EBSD Camera

Powered by a CMOS sensor, the EDAX Velocity™ EBSD Camera Series offers high-speed EBSD mapping with the highest indexing performance for all materials. The cameras combine fast acquisition with high sensitivity and low noise performance for optimal data collection and quality results.

- **Velocity™ Plus** up to **3,000** indexed points per second
- **Velocity™ Super** up to **4,500** indexed points per second
- CMOS low-noise sensor
- High-speed simultaneous EDS-EBSD collection
- 120 x 120 pixel images at high speeds
- Accurate and precise data on real-world samples including both deformed and lightweight materials

For more information about the Velocity™ EBSD Camera Series please visit [edax.com/velocity](http://edax.com/velocity)