

Review: Relationships between metabolism and neutrophil function in dairy cows in the peripartum period

S. J. LeBlanc[†] 

Population Medicine, University of Guelph, Guelph, Ontario, Canada N1G 2W1

(Received 29 April 2019; Accepted 25 July 2019)

Aspects of neutrophil function are diminished or dysregulated in dairy cows in the weeks just before and after calving, which appears to be an important contributor to the occurrence of retained placenta, mastitis, metritis and endometritis. The timing and mechanisms by which specific elements of neutrophil function are impaired are only partially understood. Oxidative burst capacity is the element of neutrophil function most consistently shown to be impaired in the week after calving, but that observation may partially be biased because oxidative burst has been studied more than other functions. There is sufficient evidence to conclude that the availability of calcium and glucose, and exposure to elevated concentrations of non-esterified fatty acids or β -hydroxybutyrate affect some aspects of neutrophil function. However, these factors have mostly been studied in isolation and their effects are not consistent. Social stressors such as a competitive environment for feeding or lying space should plausibly impair innate immune function, but when studied under controlled conditions such effects have generally not been produced. Similarly, treatment with recombinant bovine granulocyte colony-stimulating factor consistently produces large increases in circulating neutrophil count with modest improvements in function, but this does not consistently reduce the incidence of clinical diseases thought to be importantly attributable to impaired innate immunity. Research is now needed that considers the interactions among known and putative risk factors for impaired neutrophil function in dairy cows in the transition period.

Keywords: neutrophil, calcium, energy, transition, granulocyte

Implications

It has been understood for many years that dairy cows experience a temporary reduction in immune function soon after calving, which contributes to their increased risk of reproductive tract disease and mastitis. There are numerous metabolic changes related to energy and calcium supply in support of lactation which occur at the same time and which impair the function of neutrophils, immune cells that are critically important in the early stages of defence against several common diseases of dairy cows in early lactation. Research is needed to more holistically evaluate how neutrophil function is influenced in dairy cows around calving.

Introduction

Dairy cows experience massive metabolic demands to support lactation. They adapt their metabolism to do so, including uncoupling of the somatotrophic axis (Baumgard *et al.*, 2017) with peripheral insulin resistance and increased lipolysis to fuel milk production. However, cows are

challenged by a transient decrease in feed intake resulting in negative energy and protein balance in early lactation, and short duration but substantial hypocalcemia around calving. Concurrently, there is impairment of innate immune function and regulation of inflammation which is central to the development of mastitis (Ballou *et al.*, 2012) and uterine diseases (Sheldon *et al.*, 2019). The mechanisms linking these changes and metabolic challenges are only partially understood.

Markers of aspects of adaptation to negative energy balance (e.g., serum concentrations of non-esterified fatty acids (NEFA) and β -hydroxybutyrate (BHB)) are associated with the risk of many metabolic and infectious diseases, in part through their associations with suppressed immune function and excessive inflammation (Ingvarsen and Moyes, 2013). Approximately 35% of peripartum cows have NEFA and 45% have BHB above thresholds associated with metabolic disease or compromised production or reproduction (McArt *et al.*, 2013). In a large dataset, 44% of cows had at least one disease condition in early lactation, and of these, 39% had two or more separate diseases (Santos *et al.*, 2010). Impaired innate immune function appears to have an important place in this web of metabolic health and disease.

[†] E-mail: sleblanc@uoguelph.ca

This paper provides a brief narrative review of selected important determinants of health in dairy cows in the transition period around calving. Specifically, the focus is on management and social stressors, markers of adaptation to negative energy balance and hypocalcemia, and their associations with neutrophil function.

Overview of neutrophil function and its assessment in peripartum dairy cows

General neutrophil biology

Neutrophils are differentiated and proliferated in the bone marrow under the influence of granulocyte colony-stimulating factor (G-CSF), a process that appears to take about 7 to 10 days from myeloblast to release of a neutrophil into circulation (Paape *et al.*, 2003; Kubes, 2018). The turnover and production of neutrophils are impressive, estimated at 10^9 cells/kg body weight per day (Kubes, 2018) or $>10^{11}$ cells per day in cattle, which can increase 10-fold during acute inflammation or administration of G-CSF (Van Schyndel *et al.*, 2018). The process and regulation of granulopoiesis have recently been reviewed in detail (Yvan-Charvet and Ng, 2019), highlighting differences in the process between homeostatic and acute response states, including diurnal patterns, at least in mice.

Neutrophils marginate, and adhere to and 'crawl' along endothelial cells, then perform diapedesis to move from blood vessels into tissue (Kolaczowska and Kubes, 2013). While the basic process is well established (Liew and Kubes, 2019), neutrophil recruitment appears to have tissue-specific features (Margraf *et al.*, 2019), which have been described using intravital microscopy (among other techniques). The method is informative but invasive. Details of tissue-specific recruitment or function have not been described for the mammary gland or uterus, which are of the greatest interest for dairy cows. Once in tissues, neutrophils interact with damaged cells or bacteria to remove foreign cells through a variety of mechanisms (Figure 1) including phagocytosis and intracellular digestion by oxidation (e.g., oxidative burst in lysosomes), extracellular release of oxidants from neutrophil granules (e.g., myeloperoxidase; Figure 1), or casting neutrophil extracellular traps (NETs) of DNA (Nauseef and Borregaard, 2014; Liew and Kubes, 2019). Neutrophils may die by apoptosis or necrosis. The former is programmed cell death with controlled clearance of the potentially destructive residual cargo of the neutrophil by macrophages, whereas the latter features rupture of the cell contributing to damage to nearby cells and additional inflammation (Paape *et al.*, 2003). Recent data indicate that apoptotic neutrophils return from sites of action to be cleared from the bone marrow or resident macrophages in the liver or spleen, which likely helps to modulate further neutrophil responses, including shifting towards resolution of inflammation and healing (Kolaczowska and Kubes, 2013).

It is suggested that distinct subsets of neutrophils may exist, characterised by a pro-inflammatory or a pro-angiogenic phenotype and their propensity to form NETs,

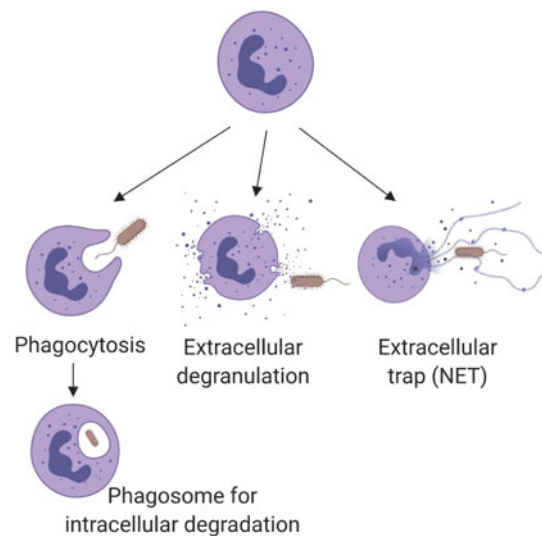


Figure 1 (Colour online) Schematic summary of the mechanisms by which neutrophils kill pathogens, such as bacteria as illustrated here. Neutrophil granules contain pro-inflammatory proteins including myeloperoxidase, lactoferrin, gelatinase and matrix metalloproteinase 9. Following phagocytosis, encapsulated pathogens are killed intracellularly by reactive oxygen species or proteins from granules that fuse with the phagosome. Neutrophil extracellular traps consist of extruded DNA and cargo from extracellular granules. (Figure created with BioRender.com.)

although it is not clear whether these are specific developmental lineages, different stages of maturity of neutrophils or the result of plasticity of function based on specific chemokines at the site of action (Kubes, 2018). Neutrophils are necessarily able to respond rapidly to stimuli, and Kubes (2018) argues that although neutrophils are capable of protein synthesis and may tailor cytokine production once *in situ*, they must have already synthesised their cargo of effector molecules before recruitment.

The lifespan of neutrophils is still unclear, complicated by the fact simply collecting a blood sample and labelling neutrophils for study may activate them. Neutrophils are generally thought to circulate for a short time (6 to 8 h half-life in humans; less in mice), but neutrophils' lifespan is extended once activated, although still to less than ~1 day (Kubes, 2018; Liew and Kubes, 2019). Additionally, recent data suggest that neutrophils may be trafficked through more complex cycles and sites, and perhaps longer lifespans than in the current paradigm (Hidalgo *et al.*, 2019).

It is now recognised that there are important links of systemic metabolism (especially adipose metabolism and insulin resistance) with immune function and inflammation in humans and laboratory animals (Hotamisligil and Erbay, 2008; Osborn and Olefsky, 2012) as well as in dairy cows (Bradford *et al.*, 2015). Both obese people and periparturient dairy cows are characterised by elevated circulating NEFA, insulin resistance, hepatic lipid accumulation and systemic inflammation, and there is great interest in the phenomenon of metabolic or sterile inflammation in dairy cows (LeBlanc, 2014). Non-esterified fatty acids, particularly saturated fatty acids which predominate in transition cows, may also impair neutrophil function (Ingvarsen and Moyes, 2013). Briefly,

certain NEFA activate toll-like receptor 4 (TLR4), a main receptor for lipopolysaccharide (LPS), which activates nuclear factor $\kappa\beta$ (NF- $\kappa\beta$) and leads to secretion of tumour necrosis factor α (TNF α), interleukin (IL)-1 and IL-8. Tumour necrosis factor α and IL-1 act on intracellular messengers to upregulate inflammation and increase insulin resistance. Based on work in mice and humans, local, classical neutrophil actions may feed into chronic, systemic, sterile inflammation (Buck *et al.*, 2017) under conditions that may include lipolysis, ketosis and lack of supply of substrates for immune cells – all of which are common in dairy cows in the transition period. Host microbiome(s) are starting to be recognised as having important interactions with regulation of inflammation well beyond the gut (Kubes, 2018). However, there are also important differences between cows in early lactation and people with ‘metabolic syndrome’ or non-alcoholic fatty liver disease.

Neutrophil function in dairy cows

Neutrophils are activated in cattle as in other species by chemokine (C-X-C motif) ligand 8 (CXCL8) (also called IL-8), platelet activating factor, TNF α and complement component C5a (Bassel and Caswell, 2018). Neutrophils can also directly detect and be activated by pathogen associated molecular patterns (PAMP) through toll-like receptors, of which TLR1, TLR2, TLR4, TLR6, TLR7 and TLR10 are known to be present on bovine neutrophils (Bassel and Caswell, 2018). Toll-like receptor 4, which responds to LPS, is especially relevant in the postpartum cow. Once stimulated by CXCL8 or TNF α released from macrophages resident in damaged tissue, or by epithelial cells reacting with PAMP or damage associated molecular patterns (Sheldon *et al.*, 2019), neutrophils begin migration.

In cattle, the circulating half-life was estimated to be 9 h (Paape *et al.*, 2003). Neutrophils in dairy cows in the transition period may have a shorter-than-normal lifespan due to early activation of apoptosis, but administration of recombinant bovine G-CSF stimulates production and release of neutrophils (Van Schyndel *et al.*, 2018). In humans, G-CSF delayed apoptosis by inhibiting caspase-9 and -3 (van Raam *et al.*, 2008). Based on the magnitude and duration of increased circulating neutrophil counts following treatment of dairy cows with a long-acting formulation of G-CSF (Van Schyndel *et al.*, 2018), there may be some extension of neutrophil lifespan in addition to ongoing stimulus of production and release. That hypothesis is supported by inhibition of caspase-9 expression in neutrophils in cows receiving the same G-CSF product (Heiser *et al.*, 2018).

The two best-studied elements of neutrophil function in dairy cows are phagocytosis and oxidative burst. These are traditionally measured in isolated, live neutrophils collected from blood, which are stimulated *in vitro* by bacteria or chemokines, with functional assays that employ flow cytometry to assess the per-cell capacity to engulf fluorescent micro-spheres or to generate a reactive oxygen molecule tagged with a fluorescent marker. These techniques have provided a lot of useful insights into innate immune function. This approach is

constrained by the requirement to perform the assays within hours (<24 h) of blood collection, being labour-intensive, and the need for expensive equipment. Additionally, it is challenging to perform the assays on cells that represent the sites of greatest interest (neutrophils in the uterus or the mammary gland). Neutrophils in the uterine lumen or in the milk have by definition already been activated and migrated, and so may be near the end of their life and less responsive to another stimulation *in vitro*, possibly leading to false-negative results. Additionally, functional assays performed on neutrophils from circulation are necessarily normalised to standard numbers of cells (e.g., 1×10^5 cells), which removes the possible effect of the number of cells in circulation. Therefore, immune functional capacity should perhaps be expressed as the product of per-cell measures of function and circulating numbers (concentration) of cells, as in the ‘phagocytic overall performance’ index used by Sander *et al.* (2011). Conversely, there do not appear to be important differences in the circulating concentrations of neutrophils between healthy and diseased cows, preceding the onset of disease (Cai *et al.*, 1994).

Another approach to assessing neutrophil status is through quantification of expression of genes for important aspects of neutrophil function. Especially with highly efficient techniques such as Nanostring which allows for simultaneous measurement of many genes with minimal extraction, this has the advantage of providing a more comprehensive profile of the suite of functional steps in neutrophil function (Heiser *et al.*, 2018). Arguably, RNA-Seq (transcriptome sequencing) provides more comprehensive information than targeted hybridisation methods including Nanostring, subject to the completeness of the reference genome. By whatever method, the caveat is that expression of RNA may not equate with function *in vivo*. For example, in contrast to the temporal differences in function discussed below, Heiser *et al.* (2018) found that many genes related to key neutrophil functions had increased expression in the first week postpartum.

Classic work by Kehrl *et al.* (1989) demonstrated impairment of elements of innate immune function around calving, although the temporal changes may have been confounded to some extent by clinical or subclinical mastitis in five of the eight primiparous animals studied. Most measures of function in neutrophils (except random migration the week before) were increased in the weeks preceding calving, followed by a nadir in week 1 after calving, particularly for their three measures of oxidative burst function. Each of retained placenta, metritis, purulent vaginal discharge, endometritis and mastitis (which collectively affect at least 25% of dairy cows in early lactation) is strongly associated with impairments of one or more aspects of neutrophil function (Gunnink, 1984; Cai *et al.*, 1994; Kimura *et al.*, 2002; Hammon *et al.*, 2006; Ballou *et al.*, 2012). While some reports document differences in neutrophil migration capacity between cows that subsequently have disease or remain healthy, the bulk of evidence points to impairment of neutrophil killing function (i.e., reduction of measures of oxidative burst such as iodination (myeloperoxidase activity), or cytochrome C reduction (generation of superoxide anion)). There

is less indication of impairment of ingestion (phagocytic capacity) by neutrophils. The changes and differences in neutrophil function precede detection of clinical disease (Hammon *et al.*, 2006) and may precede calving (Gunnink, 1984; Cai *et al.*, 1994; Kimura *et al.*, 2002).

It is important to be specific when discussing neutrophil function, because not all aspects are typically impaired in transition cows, and different variables affect particular elements of neutrophil function.

In the transition period, there are inevitable substantial changes in circulating hormone concentrations in late pregnancy and the postpartum period and numerous profound endocrine adaptations to support lactation. These are compounded by imposed changes applied with good intentions but not always good effect (such as diet and pen or social group changes), as well as variable changes that may result from the foregoing or be somewhat independent of it, such as the degree of reduction in feed intake. Finally, other variables such as heat stress, competition for feeding or lying space, the quality of resting places, feed and water quality and availability, and the extent of social turmoil may combine to abate or exacerbate the inevitable challenges of the periparturient period.

In a bold experiment, researchers at the US National Animal Disease Center attempted to separate the effects of late pregnancy and calving from those of lactation by mastectomising 10 cows in early to mid-pregnancy and comparing three markers of innate immune function to eight intact cows that calved and lactated (Kimura *et al.*, 1999). A caveat is that the effects of lactation may be confounded by the fact that all intact cows had milk fever and three of the eight had ketosis and displaced abomasum. Expression of L-selectin on the surface of neutrophils (necessary for initial (rolling) endothelial adhesion) decreased in both groups at calving but recovered within 1 to 3 days. The decrease was likely caused by inhibition of L-selectin (CD62) by glucocorticoids (Burton *et al.*, 1995), that is, cortisol released as part of parturition. Neutrophil surface expression of β 2-integrins (needed for final adhesion for diapedesis) was actually greater before calving and to 3 days postpartum in the cows that lactated. However, myeloperoxidase activity (a measure of oxidative burst capacity) declined in both groups from 3 weeks before to 3 days after calving, but then quickly and fully recovered in the mastectomised cows while remaining at the reduced level until the end of the study at 21 days postpartum in the lactating cows. On the available evidence, oxidative burst is the most consistently impaired element of neutrophil function in dairy cows after calving, and these unique data support the inference that factors related to the demands of lactation sustain but do not initiate this impairment.

Factors affecting neutrophil function

There are numerous factors that are likely to affect neutrophil functional capacity in dairy cows, the headlines of which are illustrated in Figure 2. Elaboration is provided below.

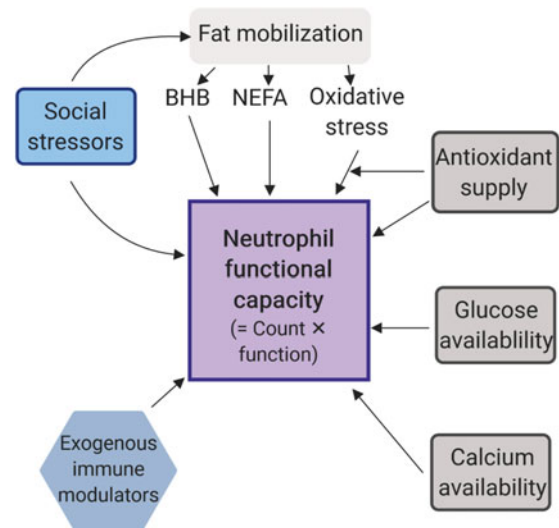


Figure 2 (Colour online) Factors that influence the functional response capacity of neutrophils in dairy cows. The scheme is simplified because there are likely interactions among these known factors, and others including genetics. Feed intake lags milk production in early lactation, so essentially all dairy cows mobilise fat stores to some degree. Nutritional formulation and feeding management determine the potential supply of immune system inputs, with additional variability imposed by social group and competitive pressures, as well as heat stress, and the comfort of the lying space. BHB = β -hydroxybutyrate; NEFA = Non-esterified fatty acids.

Management and social stress effects

Lesser feed intake up to 2 weeks before calving is a risk factor for metritis (Hammon *et al.*, 2006; Huzzey *et al.*, 2007). That finding makes sense because lower nutrient intake would plausibly reduce the availability of fuel and substrates for neutrophil function and so diminish immune response, which in turn is a risk factor for metritis (Cai *et al.*, 1994; Hammon *et al.*, 2006). The reasons for which some cows consume less than others before calving and before the onset of visible disease are not well understood. In the study by Huzzey *et al.* (2007), competitive behaviour at the feed bin was studied, and cows that were more socially submissive (had fewer interactions in which they displaced another cow for feed access) were more likely to have lower intake and metritis. That study showed that cows apparently have a strong drive to eat at the same time, most acutely after fresh feed delivery, and that more submissive animals do not compensate their intake by eating at off-peak times. That is consistent with empirical observations that crowding or competition for space at the feed bunk (i.e., <75 cm of feed bunk per cow or >80% cows to headlocks) during the transition period is a risk factor for postpartum disease (Nordlund *et al.*, 2006). Observations of the adverse effects on feed intake and lying time of pen moves and social group changes led to the logical suggestion that stable social groups and fewer movements of cows to new pens during the transition period (Cook and Nordlund, 2004), along with adequate feeding space, should reduce the incidence of postpartum disease, plausibly by reducing stressors and/or improving feed intake for cows at the submissive end of the social spectrum, thus improving metabolic status and thereby immune function.

Endogenous cortisol has a transient but substantial increase at calving, which is associated with decreased expression of glucocorticoid receptor on neutrophils and increased circulating neutrophil counts (Preisler *et al.*, 2000). Both elevated endogenous cortisol concentrations and administration of dexamethasone decreased expression of L-selectin on neutrophils, leading to neutrophilia but likely contributing to decreased functional capacity of the neutrophil system for 1 to 2 days (Weber *et al.*, 2004).

However, this hypothesis of social stress (mediated by acute or chronic elevations of cortisol or catecholamines and/or effects on feed intake or behaviour) leading to impaired immune function or health has generally not been supported in controlled studies. Huzzey *et al.* (2012) provided 4 groups of 10 cows in late gestation with 67 cm of feed rail space and 1 freestall per cow or 34 cm of feeding space and 2 cows per stall for 14 days per treatment in a crossover design. On average, feed intake was greater in the overstocked group, particularly in the second week of the treatment. There were significantly but modestly greater plasma NEFA and faecal cortisol metabolite concentrations, and lower plasma glucose concentrations in overcrowded primiparous animals, and a lesser insulin response to a glucose tolerance test in overcrowded cows. However, it is unclear that the magnitude of the effects observed would contribute to disease risk.

In an experiment, 756 Jersey cows were assigned 26 days before expected calving to separate pens for heifers or parous cows, stocked at either 80% cows to headlocks and 80% cows to freestalls, or approximately 100% cows to headlocks and stalls. There were more competitive displacements at the feed bunk in the crowded groups, but only small differences in mean feeding and lying times (Lobeck-Luchterhand *et al.*, 2015). There were no differences between treatments in the incidence of retained placenta, metritis, purulent vaginal discharge or culling, nor in plasma concentrations of NEFA or BHB, energy-corrected milk yield to 155 days of lactation, or probability of pregnancy at the first two inseminations (Silva *et al.*, 2014). In a subset of 48 cows per treatment per parity, measures of innate and adaptive immune function and chronic stress were assessed from 2 to 3 weeks before, to 2 to 3 weeks after calving (Silva *et al.*, 2016). There were no differences between treatments in neutrophil phagocytosis or oxidative burst function, expression of L-selectin or cluster of differentiation (CD)18, production of immunoglobulin (Ig) G against ovalbumin, serum haptoglobin concentrations or concentrations of cortisol in blood or hair.

To assess the effect of stable *v.* dynamic social group (pen populations) in the 4 weeks before calving, Silva *et al.* (2013b) assigned a total of 567 Jersey cows to groups of 44 cows per freestall pen in 6 replicates of stable ('all-in-all-out'; no additions to the pen) or dynamic (weekly additions of new animals to replace cows that left for calving) social groups, resulting in differences in social stability as well as average stocking density (72% and 87%, respectively, but with much greater variance in the stable groups).

There were no differences between treatments in plasma concentrations of NEFA or BHB, the incidence of retained placenta, metritis, endometritis, lameness or early culling, the prevalence of persistent anovulation, pregnancy at first or second insemination or energy-corrected milk yield. In a subset of 34 to 40 cows per treatment, there were no differences between treatments in neutrophil phagocytosis or oxidative burst function or expression of L-selectin or CD18, production of IgG against ovalbumin, serum haptoglobin concentrations or concentrations of cortisol in blood (Silva *et al.*, 2013a).

Miltenburg *et al.* (2018a) assigned a total of 48 cows in groups of 6 to 10 to either of two space allowances for the 3 weeks before calving: 90 cm of feeding rail space per cow and 80% cows to freestalls, or 45 cm of feeding space and 120% cows to stalls. Lying time was reduced by 2 h/day in the overcrowded group but was still >12 h/day on average. As seen by Silva *et al.* (2014), there were more competitive displacements at the feed bunk in overcrowded groups, although that was confounded with a greater number of such interactions among multiparous cows generally. Overcrowded cows tended to have greater liver fat content at week 3 postpartum. However, during the treatment period and to 5 weeks postpartum, there were no differences between treatments in serum BHB, NEFA, glucose, insulin, insulin-like growth factor 1, aspartate aminotransferase, bilirubin or haptoglobin concentrations, and no differences in neutrophil phagocytosis or oxidative burst function. One interesting finding was that when cows were ranked by successful displacements of other cows at the feed bunk, in under-crowded groups, medium and high success index animals had greater neutrophil oxidative burst function than low success cows or any cows in overcrowded groups. This suggests that greater space allowance may have an effect on innate immune function, but it is not to improve function for the most submissive cows. Similarly, Chebel *et al.* (2016) found that the cows in the 90th percentile of social rank (most dominant) had modestly but significantly greater neutrophil phagocytosis and oxidative burst capacity, particularly at calving. Also interestingly, and in contrast to Huzzey *et al.* (2007) compilation of data from several large experiments on space and social group stability indicated that, counter-intuitively, more dominant cows (based on displacements at the feed bunk) were at greater risk of retained placenta or metritis (Chebel *et al.*, 2016). These authors hypothesise that such cows may spend more time in aggressive interactions but fail to use their apparent advantage to consume more feed or achieve greater health (at least with respect to uterine disease). We concluded from our study (Miltenburg *et al.*, 2018a) and the published data on the effects of crowding on metabolic health and innate immune function that the evidence does not refute the potential importance of space allowances under field conditions, but feeding and lying space alone are not the critical determinants of immune function in transition dairy cows. The minimal and optimal amounts of feeding and lying space likely

depend on other variables, including whether primiparous and multiparous animals are commingled in the prepartum period (Chebel *et al.*, 2016).

Nutrient supply for neutrophil function

Mounting an immune or inflammatory response consumes meaningful quantities of nutrients, and is notably energetically costly. In an elegant experiment, Kvidera *et al.* (2017) employed an IV LPS challenge with a euglycemic clamp technique to estimate the minimal requirement of glucose to mount an acute inflammatory response, which was approximately a net of 1 kg of glucose in 12 h. The glucose requirement for immune response appears to be consistent among dairy and beef cattle at 0.7 to 1.0 g/kg body weight^{0.75} per hour.

Homeorhetic adaptations in support of lactation are oriented around partitioning nutrients to the mammary gland, notably increasing the supply of glucose for milk synthesis by sparing its use by other tissues, primarily by inducing peripheral insulin resistance. This situation likely contributes to reduction of immune function in early lactation. Activated immune cells appear to be obligate users of glucose and to increase their consumption of glucose (Kvidera *et al.*, 2017). The fuels used by bovine neutrophils are not well characterised but glucose appears to be crucial (Ingvarsen and Moyes, 2013). Conversely, *in vitro* supplementation of glucose in neutrophils from early- or mid-lactation dairy cows modestly increased phagocytic capacity but mostly did not meaningfully affect neutrophil function (Garcia *et al.*, 2015). However, the basal concentration of glucose in the cell media (7.2 mmol/l) used by Garcia *et al.* was considerably greater than in circulation in cows of either stage of lactation (~3.2 mmol/l), or even in dry cows. Once migrated, neutrophils likely must rely on stores of glycogen to function. Galvão *et al.* (2010) showed that there were lesser glycogen stores in neutrophils in circulation at calving in cows that 3 to 7 days later had metritis. That is consistent with Hammon *et al.* (2006), who showed that circulating neutrophils had lower oxidative burst capacity in cows that 1 week later had metritis, or 3 to 4 weeks later had endometritis. In that study, one explanatory variable was that neutrophils from cows in the lowest quartile of feed intake through the 3 weeks before calving (despite *ad libitum* availability) had (in relative terms) 50% lesser oxidative capacity from 1 week before to 3 weeks after calving than cows in the top quartile of feed intake. In summary, it seems that the availability of glucose to fuel neutrophil function may be a contributing factor to the impaired capacity observed in the transition period.

The supply of antioxidants (e.g., selenium and vitamin E) is important to contain the potent oxygen free radicals generated within neutrophils as part of their killing function. If there is insufficient selenium or sulphur-containing amino acids, glutathione peroxidase may not be able to detoxify hydrogen peroxide in the cytosol. Similarly, insufficient vitamin E may allow hydroxyl radicals to initiate a chain reaction of cell membrane peroxidation. Either could result in

neutrophils conducting a short-lived suicide mission rather than a more sustained response with numerous iterations of ingestion and degradation of bacteria.

There is an abundance of large-scale observational studies that demonstrate associations of elevated serum concentrations of NEFA and/or BHB (hyperketonemia or ketosis) with increased risk of infectious and metabolic disease (summarised in McArt *et al.*, 2013). Briefly, serum NEFA > 0.3 mmol/l in the 1 to 2 weeks before expected calving is associated with increased risk of retained placenta, metritis or displaced abomasum, decreased milk production and worse reproductive performance. Serum or blood BHB \geq 1.2 mmol/l in the first 2 weeks after calving is associated with increased risk of displaced abomasum, endometritis, prolonged anovulation and early culling, decreased milk yield in early lactation (conditional on the concentration of BHB and the timing of onset of ketosis) and decreased reproductive performance (McArt *et al.*, 2013). Elevated serum NEFA concentrations and hyperketonemia are indicators of some degree of maladaptive response to the demands of lactation, probably in some measure reflect the availability of glucose to fuel neutrophils, and more generally are correlated with a greater degree of negative energy balance and perhaps heightened systemic inflammation, all of which are intertwined. In the whole animal, it is difficult to distinguish between these markers as only being indicators of other complex processes, or whether NEFA or BHB might have direct effects on innate immune function. Several studies provide insight into this question, with inconsistent results.

Non-esterified fatty acids

Neutrophils were collected from eight Holstein cows in mid-lactation and incubated with mixtures of NEFA to resemble concentrations from low to typical in the days after calving (2-fold increments from 0.06 to 1 mmol/l) to extremely high (2 mmol/l) (Scalia *et al.*, 2006). Phagocytic function was not affected at any concentration of NEFA, and oxidative burst function was only affected at 2 mmol/l, where it was substantially increased, but in conjunction with massive neutrophil necrosis (49% *v.* <1% at lower concentrations), though not increased apoptosis. It is unclear if brief *in vitro* exposure of circulating neutrophils to moderately elevated concentrations of NEFA replicates the direct or indirect effects of maturation and circulation in the milieu of a peripartum cow with elevated blood NEFA concentrations, which likely also includes increased concentrations of pro-inflammatory cytokines and other modulators of neutrophil function. Ster *et al.* (2012) also mixed neutrophils from mid-lactation cows with a mixture of NEFA at 0, 0.1, 0.25, 0.5 or 0.75 mmol/l to mimic concentrations in early postpartum cows. They observed a dose-dependent reduction in oxidative burst function, with significant and substantial impairment at the two higher concentrations. They did not measure other aspects of neutrophil function with the spiked NEFA approach, but they did demonstrate inhibition of proliferation of peripheral blood mononuclear cells (PMBC) with NEFA as low as 0.13 mmol/l. Hammon *et al.* (2006) found a

significant but modest correlation between *in vivo* plasma NEFA concentration and neutrophil oxidative burst activity *in vitro* ($R^2 = 0.2$). Taken together, these studies support a possible direct and rapid effect of elevated concentrations of NEFA on the functional capacity of circulating neutrophils, but encourage more investigation into the mechanisms by which perhaps specific fatty acids modulate neutrophil functions and whether such effects are more relevant during maturation or in circulation.

Ketosis

Greater severity of clinical mastitis has been observed in cows with ketosis (Kremer *et al.*, 1993). Hoeben *et al.* (1997) isolated neutrophils from seven high-producing (presumably non-ketotic) cows and employed several assays to assess oxidative burst function in samples with BHB added at 0.01, 0.05, 0.1, 1.0 or 2.5 mmol/l. That study demonstrated impairment of generation of hydrogen peroxide specifically, through not of superoxide anion or myeloperoxidase activity, with BHB ≥ 1.0 mmol/l. In an experiment with only three to six cows per group with naturally occurring differences in blood BHB concentration, neutrophil chemotaxis was reduced in cows with BHB > 1.6 mmol/l (Suriyasathaporn *et al.*, 1999). Neutrophils from these same cows were then incubated with different combinations of ketone bodies (BHB alone at 1.0 or 4.8 mmol/l; acetoacetate or acetone alone; or a combination of all three at high or low concentrations). β -hydroxybutyrate alone did not consistently impair chemotaxis, but the other ketones and the combination of all did in all cases. This experiment has the advantage of using neutrophils that had natural exposure to ketotic cows (presumably not only elevated BHB, although the cows were at 5 to 10 weeks in lactation, so not the complex metabolic and endocrine milieu of the transition period). Ster *et al.* (2012; details above) demonstrated that adding BHB up to 1 mmol/l had no effect on blood mononuclear cell proliferation or interferon- γ production, and up to 10 mmol/l (i.e., extremely high) had no effect on neutrophil oxidative burst function. Similarly, Hammon *et al.* (2006) found no association of blood BHB concentrations with neutrophil killing ability. As with NEFA, the effects of ketone bodies are inconsistent, but there is sufficient evidence to suggest a potential effect on migration and killing functions of neutrophils. It is unclear if BHB alone is a sufficient cause of impaired neutrophil function.

Calcium

Intracellular calcium signalling is a key element in the activation of neutrophils. Calcium acts as a second messenger for intracellular signal transduction for a variety of cell-surface receptors (Vig and Kinet, 2009). Neutrophils treated *in vitro* with ethylene diamine tetraacetic acid, an extracellular calcium ion chelator, had severely reduced phagocytosis capacity (Ducusin *et al.*, 2001). Therefore, hypocalcemia around calving may contribute to immune cell dysfunction. Neutrophils collected from cows with clinical milk fever had lower intracellular calcium concentrations and impaired

phagocytosis compared to cows without parturient paresis (Ducusin *et al.*, 2003). Kimura *et al.* (2006) isolated PMBC from 27 cows through the transition period, 8 of which had developed clinical milk fever, and assessed the quantity and release of intracellular calcium stores. They showed that the stimulated flux of intracellular ionised calcium (iCa) was reduced at calving, and lower in cows that developed milk fever days from 12 days before the onset of clinical signs. Intracellular iCa response of PMBC was low at the time of milk fever, but doubled following treatment with intravenous calcium, indicating prompt response of PMBC intracellular iCa to increased plasma concentrations of total calcium. The releasable intracellular iCa store decreased before calving and was correlated with blood calcium concentration and with intracellular iCa flux in response to stimulation. The authors suggested that intracellular stores of iCa may be diminished before calving as there is net efflux of iCa in an attempt to maintain blood calcium concentration, likely contributing to impaired PMBC function by decreasing the magnitude of intracellular iCa flux available to activate cell function.

Recent work demonstrates the calcium 'cost' of mounting an inflammatory response to an acute LPS challenge. Using a model analogous to Kvidera *et al.* (2017) for glucose, Horst *et al.*, (2018) showed that in the 12 h after challenge with LPS, blood calcium concentration was reduced by 32%, and maintenance of eucalcemia during that time required infusion of 12 g of Ca, or somewhat more than the typical deficit (8 to 10 g) in a cow recumbent with milk fever.

Subclinical hypocalcemia is highly prevalent among periparturient cows and is associated with increased risk of displaced abomasum (Chapinal *et al.*, 2011) and milk production losses (Chapinal *et al.*, 2012) and increased culling risk in early lactation (Roberts *et al.*, 2012). Cows classified at high risk for metritis (having one or more of dystocia, twins, stillbirth or retained placenta) that were able to maintain serum calcium concentrations above 2.15 mmol/l had one-half and one-third the incidence of metritis and puerperal metritis, respectively, when compared to low metritis risk cows that were below this cut-point at least once in the first 3 days postpartum (Martinez *et al.*, 2012). That study showed reduced total circulating neutrophil number, neutrophil phagocytosis and neutrophil oxidative burst capacity in cows with blood calcium < 2.15 mmol/l through the first 3 days postpartum. Based on the variables measured in the study, at least two-thirds of the cases of metritis were estimated to be attributable to having blood calcium below 2.15 mmol/l in the first 3 days postpartum. Even if that is an overestimate if more variables in more herds were considered, it points to suboptimal calcemia contributing meaningfully to the occurrence of metritis, mediated at least in part by impairment of neutrophil function.

The same research group explored this association through experimental induction of hypocalcemia with a 24-h infusion of a selective iCa chelator (Martinez *et al.*, 2014). They used 10 mature, non-pregnant, non-lactating cows in a crossover design. By about 4 h after the start of treatment, steady-state

plasma concentrations of ~ 0.75 mmol/l iCa and ~ 1.75 mmol/l total calcium were maintained for 20 h; therefore, the model replicated blood calcium levels in a hypocalcemic (but not milk fever) cow in the day after calving. Feed intake (~ 5 v. 10 kg DM/day), blood glucose (~ 4.2 v. 4.4 mmol/l) and insulin concentrations decreased and NEFA increased during treatment, so the effects of treatment may not all be directly attributable to calcium. Neutrophil phagocytosis and oxidative burst function decreased at the end of the infusion and continued to diverge negatively from the controls until 3 days after the end of the infusion. The data patterns for both measures of neutrophil function were similar to those in their field study (Martinez *et al.*, 2012). Similar to Kimura *et al.* (2006), experimentally induced hypocalcemia decreased the stimulated intracellular iCa flux (Martinez *et al.*, 2014). The data from the latter study support earlier experimental and observational data that transient (≤ 1 day) hypocalcemia contributes to impaired neutrophil function and consequently to disease risk.

Emerging data (McArt and Neves, 2020) indicate that the pattern and duration of reduced blood calcium concentrations in the 4 days after calving are more predictive of disease risk and milk yield than the nadir concentration or single point measurements in the first 24 h after calving. This new approach to classifying hypocalcemia should be applied to study its effects on neutrophil function.

The effect of calcium supplementation or prepartum diet on neutrophil function. We evaluated (Miltenburg *et al.*, 2018b) whether administration of an injectable calcium supplement at time of calving increased neutrophil oxidative burst or phagocytosis capacity. Cows ($n = 27$) from four farms were blocked by parity and randomly assigned to receive either a commercial injectable calcium supplement or a placebo within 12 h after calving and again 24 h later. In a separate study with the same protocol (Miltenburg *et al.*, 2016), treatment increased serum total calcium at 24 h postpartum, conditional on calcium concentration before treatment. Total serum calcium concentration (tCa), neutrophil oxidative burst and neutrophil phagocytosis capacity were measured from coccygeal blood samples before and 72 h after the first treatment. The study animals were 23 first parity heifers and 6 multiparous cows. There was no effect of treatment on oxidative burst or phagocytosis. Therefore, despite plasma calcium concentration being associated with neutrophil function as described above, this study does not support the ability of supplemental calcium, as given to low-parity parturient cows soon after calving, to improve oxidative burst or phagocytosis capacity of neutrophils.

Martinez *et al.* (2018) used 80 cows in a 2×2 factorial experiment of positive or negative (-130 mEq/kg DM) dietary cation–anion difference (DCAD) with different dietary sources of vitamin D fed for 4 weeks before calving to assess a variety of health outcomes. The negative DCAD treatment increased plasma iCa and tCa at calving and 1 day later. Regarding neutrophil function, there were no effects of treatments on phagocytosis, and no interactions of the effects of DCAD and source of vitamin D on neutrophil function.

Overall, cows fed calcidiol had better oxidative burst function postpartum than those fed cholecalciferol. Among multiparous cows, there was a modest effect of the negative DCAD diet to improve phagocytosis function before calving and oxidative burst function after calving. Therefore, improving maintenance of calcium homeostasis through dietary prevention approaches holds some promise for support of neutrophil function.

Immune modulation treatment

Almost since reduction of aspects of peripartum neutrophil function was documented (Kehrli *et al.*, 1989), there has been interest in interventions that might mitigate the problem, initially with reference to mastitis (reviewed by Kehrli *et al.*, 1991a). The focus has been on stimulation of the circulating numbers, and possibly function of neutrophils using G-CSF. Daily injections of recombinant bovine G-CSF increased circulating neutrophil count and some but not all elements of function (Kehrli *et al.*, 1991b). Another early attempt (Cai *et al.*, 1994) incubated isolated bovine neutrophils from healthy cows or those with retained placenta, metritis or mastitis with recombinant human G-CSF or granulocyte-macrophage CSF. No effect was found on six measures of migration, chemotaxis, ingestion or killing capacity. Incubation of bovine neutrophils with G-CSF did not induce oxidative burst, but enhanced it when the cells were later activated by exposure to bacteria; this effect was augmented by prior exposure to both IL-8 and G-CSF (Mitchell *et al.*, 2003). Interest was revived when a pegylated recombinant bovine G-CSF (PEG-rbG-CSF) product that only needed to be injected approximately weekly became commercially available. A small study with that product (Imrestor; Elanco Animal Health Greenfield, IL, USA) demonstrated substantial increases in circulating neutrophil count and an increase in myeloperoxidase exocytosis, but not phagocytosis or oxidative burst (Kimura *et al.*, 2014). Those effects have been confirmed in subsequent studies (McDougall *et al.*, 2017; Van Schyndel *et al.*, 2018). Blood neutrophils from cows treated with PEG-rbG-CSF had greater expression of 3 (*ICAM1*, *TLR2* and *PTGS2*) of a panel of 20 genes selected to represent the chain of functional steps of neutrophils (Heiser *et al.*, 2018). These differences in gene expression suggested possible enhancement of cell adhesion for migration, recognition of pathogens (Gram-positive bacteria in particular) and generation of inflammation through the cyclooxygenase pathway. However, functional assays from the same study (McDougall *et al.*, 2017) showed increased myeloperoxidase release but no difference in phagocytosis or oxidative burst. Heiser *et al.* (2018) also isolated neutrophils from the uterus at 4 and 7 days postpartum and showed 11 differentially expressed genes in cows treated with PEG-rbG-CSF which collectively suggested enhanced antimicrobial capacity. Several randomised controlled trials demonstrated an approximately one-third relative reduction in the incidence of clinical mastitis in early lactation following treatment with PEG-rbG-CSF. Hassfurther *et al.* (2015) assigned just over 50 cows per group to control, 5, 10 or

20 µg/kg PEG-rbG-CSF (2 doses: at 7 days before expected calving and within 24 h after). Treatment produced the expected ~4-fold increase in circulating neutrophil counts the day after the first administration (to $\sim 20 \times 10^9$ cells/l), with lesser, dose-responsive increases present 7 days after the second administration. The study was conducted on one commercial farm, where the dirt resting area was kept wet to increase the incidence of mastitis for the study. The incidence of clinical mastitis to 28 days postpartum was 34%, 20%, 17% and 9% for control, 5, 10 or 20 µg/kg PEG-rbG-CSF, respectively. There were no differences among groups in the severity of cases of mastitis, although the study was not really powered to assess this outcome. Canning *et al.* (2017) randomised a total of 640 cows across four farms to receive either 15 mg PEG-rbG-CSF (equivalent to 22 µg/kg for a 675 kg cow) or saline, twice, as above. They observed increases in circulating neutrophil counts similar to Hassfurther *et al.* (2015) for the corresponding time points and dose. The reporting of the data makes it difficult to calculate exact outcome measures, but the incidence of clinical mastitis was lower in the treated group (~15%) than in the control group (~23%). Reproductive outcome measures were reported, but the study was not designed to have sufficient power to assess these outcomes. The observation of a reduction in the treatment group in the proportion of cows failing to be detected in oestrus by 80 days postpartum was driven by a single farm and would require confirmation. Ruiz *et al.* (2017) used the same dose and timings of administration of PEG-rbG-CSF as in Canning *et al.* (2017) in 10 238 cows across 17 farms in Mexico. Treatments were assigned based on ear-tag numbers and no placebo was employed, increasing the risk of bias due to lack of blinding and not-truly random assignment to treatment. The incidence risks of retained placenta were 5.8% and 5.6%, of metritis to 21 days 8.4% and 9.8%, and of clinical mastitis to 30 days postpartum 4.9% and 3.7% in the control and treated groups, respectively. The latter two disease risks were statistically different. Paradoxically, this study could be said to be statistically over-powered, because the biological and economic importance of these differences is questionable. Moreover, the case definition used for metritis was not well validated.

Given what is understood about the apparently important role of neutrophil dysfunction in the pathogenesis of retained placenta, metritis and endometritis (reviewed by LeBlanc, 2014), it was plausible to hypothesise that treatment with PEG-rbG-CSF would reduce the incidence of these diseases. However, in one large controlled trial (Zinicola *et al.*, 2018), despite the substantial increase in blood neutrophil counts as expected, there were no treatment effects on the risk of retained placenta, uterine diseases or mastitis, and inexplicably increased risks of displaced abomasum and lameness. Taken together, it appears that PEG-rbG-CSF consistently causes substantial increases in the number of circulating neutrophils for several weeks, with modest increases in per-cell function, most consistently of extracellular release of myeloperoxidase, but that these effects do not consistently

reduce the incidence of diseases thought to be importantly related to neutrophil function. If a central role of innate immune function in reproductive tract diseases is true, these data underline the complexity of effective neutrophil response and subsequent regulation of inflammation; even massive increases in the numbers of neutrophils available in circulation do not predictably result in less disease.


Conclusion

There is a body of evidence to support that each of glucose supply, blood concentrations of calcium, NEFA and BHB, and treatment with rbG-CSF are associated with the overall capacity of neutrophil responses in dairy cows in the 1 to 2 weeks after calving. Most commonly, the aspect of neutrophil function reported to be affected relates to oxidative burst, although that may be skewed because it is the most studied. There are fewer assessments of migration capacity, and still little in the bovine on NET function, apoptosis, cross-talk of neutrophils with the adaptive immune system or the role of neutrophils in down-regulating inflammation after the initial response. Notably, none of the effects of these factors influencing neutrophil function has been consistent among studies. Furthermore, controlled studies of socially competitive environments do not reproduce the effects on immune function or related clinical diseases that would be expected from empirical observations. These inconsistencies may be partially attributable to differences in the study populations or the methods of analysis of neutrophil function, but it seems more likely that the interactions of these known factors (and probably others) are the key determinants of effective innate immune function and inflammatory response. Future research should assess the interactions among markers of energy supply and metabolism, and of those with calcium supply, and investigate the effects of the timing and duration of these effects. Many of the recent observations and hypotheses on neutrophil function in humans and mice have not been explored in cattle, including the existence of tissue-specific recruitment mechanisms and whether tissue 'resident' (or at least marginated) populations exist in certain organs, notably in the uterus and udder. It would also be particularly relevant in cattle to pursue the question of whether neutrophils behave or are regulated differently in infection, injury and sterile inflammation (also known as metabolic inflammation). It would be of practical importance to understand whether glucose and calcium supply, or exposure to NEFA or BHB are critical during myelopoiesis, in circulation in blood, or both. When and how are glycogen and calcium taken onboard neutrophils? For clinical application, the present state of scientific evidence is consistent with the notion that best management practices to support adaptive metabolism and prevent excessive negative energy balance or hypocalcemia should plausibly be beneficial for innate immune function in transition dairy cows. However, there are insufficient data to make specific recommendations that would consistently enhance neutrophil function or reduce the incidence of diseases

understood to be consequences of impaired or dysregulated immune function.

Acknowledgement

No funding sources supported production of this review paper.

 S. J. LeBlanc 0000-0003-2027-7704

Declaration of interest

The author declares no conflicts of interest.

Ethics statement

No new animal or human studies were performed for this paper.

No ethics statement was thus required.

Software and data repository resources

None of the data were deposited in an official repository.

References

Ballou MA 2012. Role in the etiology and pathophysiology of clinical mastitis in dairy cows. *Journal of Animal Science* 90, 1466–1478.

Bassel LL and Caswell JL 2018. Bovine neutrophils in health and disease. *Cell and Tissue Research* 371, 617–637.

Baumgard LH, Collier RJ and Bauman DE 2017. A 100-year review: regulation of nutrient partitioning to support lactation. *Journal of Dairy Science* 100, 10353–10366.

Bradford BJ, Yuan K, Farney JK, Mamedova LK and Carpenter AJ 2015. Invited review: inflammation during the transition to lactation: new adventures with an old flame. *Journal of Dairy Science* 98, 6631–6650.

Buck MD, Sowell RT, Kaech SM and Pearce EL 2017. Metabolic instruction of immunity. *Cell* 169, 570–586.

Burton JL, Kehrl ME, Kapil S and Horst RL 1995. Regulation of L-selectin and CD18 on bovine neutrophils by glucocorticoids: effects of cortisol and dexamethasone. *Journal of Leukocyte Biology* 57, 317–325.

Cai TQ, Weston PG, Lund LA, Brodie B, McKenna DJ and Wagner WC 1994. Association between neutrophil functions and periparturient disorders in cows. *American Journal of Veterinary Research* 55, 934–943.

Canning P, Hassfurther R, Terhune T, Rogers K, Abbott S and Kolb D 2017. Efficacy and clinical safety of pegbovigrastim for preventing naturally occurring clinical mastitis in periparturient primiparous and multiparous cows on US commercial dairies. *Journal of Dairy Science* 100, 6504–6515.

Chapinal N, Carson ME, Duffield TF, Capel M, Godden S, Overton M, Santos JEP and LeBlanc SJ 2011. The association of serum metabolites with clinical disease during the transition period. *Journal of Dairy Science* 94, 4897–4903.

Chapinal N, Carson ME, LeBlanc SJ, Leslie KE, Godden S, Capel M, Santos JEP, Overton MW and Duffield TF 2012. The association of serum metabolites in the transition period with milk production and early lactation reproductive performance. *Journal of Dairy Science* 95, 1301–1309.

Chebel RC, Silva PRB, Endres MI, Ballou MA and Luchterhand KL 2016. Social stressors and their effects on immunity and health of periparturient dairy cows. *Journal of Dairy Science* 99, 3217–3228.

Cook NV and Nordlund KV 2004. Behavioral needs of the transition cow and considerations for special needs facility design. *Veterinary Clinics of North America – Food Animal* 20, 495–520.

Ducusin RJ, Sarashina T, Uzuka Y, Tanabe S and Ohtani M 2001. Phagocytic response of bovine polymorphonuclear leukocytes to different incubation conditions and following exposure to some effectors of phagocytosis and different anticoagulants in vitro. *Canadian Journal of Veterinary Research* 65, 38–44.

Ducusin RJ, Uzuka Y, Satoh E, Otani M, Nishimura M, Tanabe S and Sarashina T 2003. Effects of extracellular Ca²⁺ on phagocytosis and intracellular Ca²⁺ concentrations in polymorphonuclear leukocytes of postpartum dairy cows. *Research in Veterinary Science* 75, 27–32.

Galvão KN, Flaminio MJB, Brittin SB, Sper R, Fraga M, Caixeta L, Ricci A, Guard CL, Butler WR and Gilbert RO 2010. Association between uterine disease and indicators of neutrophil and systemic energy status in lactating Holstein cows. *Journal of Dairy Science* 93, 2926–2937.

Garcia M, Elsasser TH, Qu Y, Zhu X and Moyes KM 2015. Glucose supplementation has minimal effects on blood neutrophil function and gene expression in vitro. *Journal of Dairy Science* 98, 6139–6150.

Gunnink JW 1984. Pre-partum leucocytic activity and retained placenta. *Veterinary Quarterly* 6, 52–54.

Hammon DS, Evjen IM, Dhiman TR, Goff JP and Walters JL 2006. Neutrophil function and energy status in Holstein cows with uterine health disorders. *Veterinary Immunology and Immunopathology* 113, 21–29.

Hassfurther RL, Terhune TN and Canning PC 2015. Efficacy of polyethylene glycol conjugated bovine granulocyte colony-stimulating factor for reducing the incidence of naturally occurring clinical mastitis in periparturient dairy cows and heifers. *American Journal of Veterinary Research* 76, 231–238.

Heiser A, LeBlanc SJ and McDougall S 2018. Pegbovigrastim treatment affects gene expression in neutrophils of pasture-fed, periparturient cows. *Journal of Dairy Science* 101, 8194–8207.

Hidalgo A, Chilvers ER, Summers C and Koenderman L 2019. The neutrophil life cycle. *Trends in Immunology* 40, 584–597.

Hoeben D, Heyneman R and Burvenich C 1997. Elevated levels of beta-hydroxybutyric acid in periparturient cows and in vitro effect on respiratory burst activity of bovine neutrophils. *Veterinary Immunology and Immunopathology* 58, 165–170.

Horst EA, Mayorga EJ, Al-Qaisi M, Abeyta MA, Portner SL, McCarthy CS, Goetz BM, Ramirez-Ramirez HA and Baumgard LH 2018. Effects of maintaining eucalcaemia following immunoactivation in lactating cows. *Journal of Dairy Science* 101 (suppl. 2), 383.

Hotamisligil GS and Erbay E 2008. Nutrient sensing and inflammation in metabolic diseases. *Nature Reviews Immunology* 8, 923–934.

Huzzey JM, Nydam DV, Grant RJ and Overton TR 2012. The effects of overstocking Holstein dairy cattle during the dry period on cortisol secretion and energy metabolism. *Journal of Dairy Science* 95, 4421–4433.

Huzzey JM, Veira DM, Weary DM and von Keyserlingk MA 2007. Prepartum behavior and dry matter intake identify dairy cows at risk for metritis. *Journal of Dairy Science* 90, 3220–3233.

Ingvartsen KL and Moyes KM 2013. Nutrition, immune function and health of dairy cattle. *Animal* 7, 112–122.

Kehrli ME, Cullor JS and Nickerson SC 1991a. Immunobiology of hematopoietic colony-stimulating factors: potential application to disease prevention in the bovine. *Journal of Dairy Science* 74, 4399–4412.

Kehrli ME, Goff JP, Stevens MG and Boone TC 1991b. Effects of granulocyte colony-stimulating factor administration to periparturient cows on neutrophils and bacterial shedding. *Journal of Dairy Science* 74, 2448–2458.

Kehrli ME, Nonnecke BJ and Roth JA 1989. Alterations in bovine neutrophil function during the periparturient period. *American Journal of Veterinary Research* 50, 207–214.

Kimura K, Goff JP, Canning P, Wang C and Roth JA 2014. Effect of recombinant bovine granulocyte colony-stimulating factor covalently bound to polyethylene glycol injection on neutrophil number and function in periparturient dairy cows. *Journal of Dairy Science* 97, 4842–4851.

Kimura K, Goff JP and Kehrl ME 1999. Effects of the presence of the mammary gland on expression of neutrophil adhesion molecules and myeloperoxidase activity in periparturient dairy cows. *Journal of Dairy Science* 82, 2385–2392.

Kimura K, Goff JP, Kehrl ME and Reinhardt TA 2002. Decreased neutrophil function as a cause of retained placenta in dairy cattle. *Journal of Dairy Science* 85, 544–550.

Kimura K, Reinhardt TA and Goff JP 2006. Parturition and hypocalcemia blunts calcium signals in immune cells of dairy cattle. *Journal of Dairy Science* 89, 2588–2595.

Kolaczowska E and Kubers P 2013. Neutrophil recruitment and function in health and inflammation. *Nature Reviews Immunology* 13, 159–175.

Kremer WDJ, Burvenich C, Noordhuizen-Stassen EN, Grommers FJ, Schukken YH, Heeringa R and Brand A 1993. Severity of experimental *Escherichia coli* mastitis in ketonemic and nonketonemic dairy cows. *Journal of Dairy Science* 76, 3428–3436.

- Kubes P 2018. The enigmatic neutrophil: what we do not know. *Cell and Tissue Research* 371, 399–406.
- Kvidera SK, Horst EA, Abuajamieh M, Mayorga MJ, Sanz Fernandez MV and Baumgard LH 2017. Glucose requirements of an activated immune system in lactating Holstein cows. *Journal of Dairy Science* 100, 2360–2374.
- LeBlanc SJ 2014. Reproductive tract inflammatory disease in postpartum dairy cows. *Animal* 8 (suppl. 1), 54–63.
- Liew PX and Kubes P 2019. The neutrophil's role during health and disease. *Physiological Reviews* 99, 1223–1248.
- Lobeck-Luchterhand KM, Silva PR, Chebel RC and Endres MI 2015. Effect of stocking density on social, feeding, and lying behavior of prepartum dairy animals. *Journal of Dairy Science* 98, 240–249.
- Margraf A, Ley K and Zarbock A 2019. Neutrophil recruitment: from model systems to tissue-specific patterns. *Trends in Immunology* 40, 613–634.
- Martinez N, Risco CA, Lima FS, Bisinotto RS, Greco LF, Ribeiro ES, Maunsell F, Galvão K and Santos JEP 2012. Evaluation of periparturient calcium status, energetic profile, and neutrophil function in dairy cows at low or high risk of developing uterine disease. *Journal of Dairy Science* 95, 7158–7172.
- Martinez N, Rodney RM, Block E, Hernandez LL, Nelson CD, Lean IJ and Santos JEP 2018. Effects of prepartum dietary cation-anion difference and source of vitamin D in dairy cows: health and reproductive responses. *Journal of Dairy Science* 101, 2563–2578.
- Martinez N, Sinedino LPD, Bisinotto RS, Ribeiro ES, Gomes GC, Lima FS, Greco LF, Risco CA, Galvão KN, Taylor-Rodriguez D, Driver JP, Thatcher WW and Santos JEP 2014. Effect of induced subclinical hypocalcemia on physiological responses and neutrophil function in dairy cows. *Journal of Dairy Science* 97, 874–887.
- McArt JAA and Neves RC 2020. Association of transient, persistent, or delayed subclinical hypocalcemia with early lactation disease, removal, and milk yield in Holstein cows. *Journal of Dairy Science* 103, 690–701.
- McArt JAA, Nydam DV, Oetzel GR, Overton TR and Ospina PA 2013. Elevated non-esterified fatty acids and β -hydroxybutyrate and their association with transition dairy cow performance. *The Veterinary Journal* 198, 560–570.
- McDougall S, LeBlanc SJ and Heiser A 2017. Effect of prepartum energy balance on neutrophil function following pegbovigrastim treatment in periparturient cows. *Journal of Dairy Science* 100, 7478–7492.
- Miltenburg CL, Duffield TF, Bienzle D, Scholtz E and LeBlanc SJ 2016. Randomized clinical trial of a calcium supplement for improvement of health in dairy cows in early lactation. *Journal of Dairy Science* 99, 6550–6562.
- Miltenburg CL, Duffield TF, Bienzle D, Scholtz E and LeBlanc SJ 2018a. The effect of prepartum feeding and lying space on metabolic health and immune function. *Journal of Dairy Science* 101, 5294–5306.
- Miltenburg CL, Duffield TF, Bienzle D, Scholtz E and LeBlanc SJ 2018b. Short communication: the effect of calcium supplementation at calving on neutrophil function. *Journal of Dairy Science* 101, 9505–9509.
- Mitchell GB, Albright BN and Caswell JL 2003. Effect of interleukin-8 and granulocyte colony-stimulating factor on priming and activation of bovine neutrophils. *Infection and Immunity* 71, 1643–1649.
- Nauseef WM and Borregaard N 2014. Neutrophils at work. *Nature Immunology* 15, 602–611.
- Nordlund K, Cook N and Oetzel G 2006. Commingling dairy cows: pen moves, stocking density and health. *Proceedings of the American Association of Bovine Practitioners* 39, 36–42.
- Osborn O and Olefsky JM 2012. The cellular and signalling networks linking the immune system and metabolism in disease. *Nature Medicine* 18, 363–374.
- Paape MJ, Bannerman DD, Zhao X and Lee JW 2003. The bovine neutrophil: structure and function in blood and milk. *Veterinary Research* 34, 597–627.
- Preisler MT, Weber PS, Tempelman RJ, Erskine RJ, Hunt H and Burton JL 2000. Glucocorticoid receptor down-regulation in neutrophils of periparturient cows. *American Journal of Veterinary Research* 61, 14–19.
- Roberts T, Chapinal N, LeBlanc SJ, Kelton DF, Dubuc J and Duffield TF 2012. Metabolic parameters in transition cows as indicators for early-lactation culling risk. *Journal of Dairy Science* 95, 3057–3063.
- Ruiz R, Tedeschi LO and Sepulveda A 2017. Investigation of the effect of pegbovigrastim on some periparturient immune disorders and performance in Mexican dairy herds. *Journal of Dairy Science* 100, 3305–3317.
- Sander AK, Piechotta M, Schlamberger G, Bollwein H, Kaske M, Sipka A and Schuberth HJ 2011. Ex vivo phagocytic overall performance of neutrophilic granulocytes and the relation to plasma insulin-like growth factor-I concentrations in dairy cows during the transition period. *Journal of Dairy Science* 94, 1762–1771.
- Santos JE, Bisinotto RS, Ribeiro ES, Lima FS, Greco LF, Staples CR and Thatcher WW 2010. Applying nutrition and physiology to improve reproduction in dairy cattle. *Society for Reproduction and Fertility Supplement* 67, 387–403.
- Scalia D, Lacetera N and Bernabucci U 2006. In vitro effects of nonesterified fatty acids on bovine neutrophils oxidative burst and viability. *Journal of Dairy Science* 89, 147–154.
- Sheldon IM, Cronin JG and Bromfield JJ 2019. Tolerance and innate immunity shape the development of postpartum uterine disease and the impact of endometritis in dairy cattle. *Annual Reviews in Animal Biosciences* 7, 11.1–11.24.
- Silva PR, Dresch AR, Machado KS, Moraes JG, Lobeck-Luchterhand K, Nishimura TK, Ferreira MA, Endres MI and Chebel RC 2014. Prepartum stocking density: effects on metabolic, health, reproductive, and productive responses. *Journal of Dairy Science* 97, 5521–5532.
- Silva PR, Lobeck-Luchterhand KM, Cerri RLA, Haines DM, Ballou MA, Endres MI and Chebel RC 2016. Effects of prepartum stocking density on innate and adaptive leukocyte responses and serum and hair cortisol concentrations. *Veterinary Immunology and Immunopathology* 169, 39–46.
- Silva PR, Moraes JGN, Mendonça LGD, Scanavez AA, Nakagawa G, Ballou MA, Walcheck B, Haines D, Endres MI and Chebel RC 2013a. Effects of weekly regrouping of prepartum dairy cows on innate immune response and antibody concentration. *Journal of Dairy Science* 96, 7649–7657.
- Silva PR, Moraes JGN, Mendonça LGD, Scanavez AA, Nakagawa G, Fetrow J, Endres MI and Chebel RC 2013b. Effects of weekly regrouping of prepartum dairy cows on metabolic, health, reproductive, and productive parameters. *Journal of Dairy Science* 96, 4436–4446.
- Ster C, Loiselle MC and Lacasse P 2012. Effect of postcalving serum nonesterified fatty acids concentration on the functionality of bovine immune cells. *Journal of Dairy Science* 95, 708–717.
- Suriyasathaporn W, Daemen AJJM, Noordhuizen-Stassen EN, Dieleman SJ, Nielen M and Schukken YH 1999. β -hydroxybutyrate levels in peripheral blood and ketone bodies supplemented in culture media affect the in vitro chemotaxis of bovine leukocytes. *Veterinary Immunology and Immunopathology* 68, 177–186.
- van Raam BJ, Drewniak A, Groenewold V, van den Berg TK and Kuijpers TW 2008. Granulocyte colony-stimulating factor delays neutrophil apoptosis by inhibition of calpains upstream of caspase-3. *Blood* 112, 2046–2054.
- Van Schyndel SJ, Carrier J, Bogado Pascottini O and LeBlanc SJ 2018. The effect of pegbovigrastim on circulating neutrophil count in dairy cattle: a randomized controlled trial. *PLoS ONE* 13, e0198701.
- Vig M and Kinet JP 2009. Calcium signaling in immune cells. *Nature Immunology* 10, 21–27.
- Weber PSD, Toelboell T, Chang L-C, Durrett Tirrell J, Saama PM, Smith GW and Burton JL 2004. Mechanisms of glucocorticoid-induced down-regulation of neutrophil L-selectin in cattle: evidence for effects at the gene-expression level and primarily on blood neutrophils. *Journal of Leukocyte Biology* 75, 815–827.
- Yvan-Charvet L and Ng LG 2019. Granulopoiesis and neutrophil homeostasis: a metabolic, daily balancing act. *Trends in Immunology* 40, 598–612.
- Zinicola M, Korzec H, Teixeira AGV, Ganda EK, Bringhenti L, Tomazi ACCH, Gilbert RO and Bicalho RC 2018. Effects of pegbovigrastim administration on periparturient diseases, milk production, and reproductive performance of Holstein cows. *Journal of Dairy Science* 101, 11199–11217.