

# Sights Unseen.

With the New JEM-2010F Field Emission Electron Microscope  
You'll See It ... If It's There.

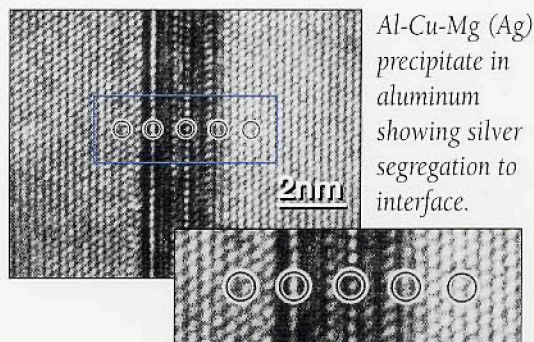
From JEOL...the newest generation of precision equipment that permits unprecedented resolution in 3-dimensional, subnanometer analysis of microstructures. Featuring user-friendly operation and long-term stability, the JEM-2010F also offers:

- Schottky Emission: High Current High Brightness
- High Probe Current: 0.5nm Probe with 100 pA Current
- High Resolution: Information Limit 1.4Å, Scherzer 1.9Å
- Holography: Option Available
- STEM Resolution: 0.2nm Magnification: 8MX

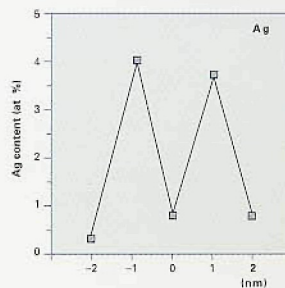
Discover the JEM-2010F and visit sights previously unseen.



JEOL USA, Inc., 11 Dearborn Road, Peabody, MA 01960  
Tel: 508-535-5900 Fax: 508-536-2205 e-mail: eod@jeol.com



Al-Cu-Mg (Ag) precipitate in aluminum showing silver segregation to interface.



Data courtesy of Dr. James M. Howe, Department of Materials Science & Engineering, University of Virginia, U.S.A.



# UNEQUALED VERSATILITY

## Topcon Scanning Electron Microscopes in a Unique Class

You value the versatility of a Swiss Army Knife. Now, you can have that same kind of versatility with Topcon's 500 Series SEMs for your scanning electron microscopy tasks. The versatility to meet your needs today and tomorrow.

### Ultimate SEM Capabilities

Choose from a complete family of SEMs – Tungsten (W), LaB<sub>6</sub>, and Field Emission.



All have windows mouse-based computer controls or traditional automated controls, or both, to provide access to all SEM func-

tions. Comprehensive digital imaging and archiving provide full image manipulation. Unique WET-SEM capability gives you the real image quickly and easily.

Compare and you'll agree that no other SEM comes close in versatility, ease of use, reliability and value. It's unequalled. But see for yourself. Call us at 1-800-538-6850 or write to TOPCON, 37 West Century Road, Paramus, New Jersey 07652.

