

Association of climate variability and childhood diarrhoeal disease in rural Bangladesh, 2000–2006

J. WU^{1*}, M. YUNUS², P. K. STREATFIELD² AND M. EMCH^{3,4,5*}

¹ *Department of Environmental Sciences and Engineering, Gillings School of Global Public Health, University of North Carolina at Chapel Hill, NC, USA*

² *International Centre for Diarrhoeal Disease Research, Bangladesh*

³ *Department of Geography, University of North Carolina at Chapel Hill, NC, USA*

⁴ *Department of Epidemiology, Gillings School of Global Public Health, University of North Carolina at Chapel Hill, NC, USA*

⁵ *Carolina Population Center, University of North Carolina at Chapel Hill, NC, USA*

*Received 14 March 2013; Final revision 11 September 2013; Accepted 8 October 2013;
first published online 30 October 2013*

SUMMARY

This study examined the effects of meteorological factors, particularly, extreme weather events, on the prevalence of childhood diarrhoeal disease in Matlab, Bangladesh. Logistic regression models were used to examine impacts of temperature, rainfall and the extreme weather factors (the number of hot days and days with heavy rainfall) on childhood diarrhoea from 2000 to 2006 at the *bari* (cluster of dwellings) level. The results showed that the increases in the number of hot days and days with heavy rainfall were associated with an increase in daily diarrhoea cases by 0·8–3·8% and 1–6·2%, respectively. The results from multivariable stepwise models showed that the extreme weather factors were still positively associated with childhood diarrhoea, while the associations for average temperature and rainfall could be negative after other variables were controlled. The findings showed that not only the intensity, but also the frequency of extreme weather events had significant effects on childhood diarrhoea.

Key words: Bangladesh, climate variability, diarrhoeal disease, extreme weather.

INTRODUCTION

According to the Intergovernmental Panel on Climate Change (IPCC), the annual global temperature will increase by 1·8–6·4 °C by 2100 [1]. With the increase in temperature, rainfall in most areas around the world will increase, which will lead to intense climate variability in the future [1]. Climate variability can have profound effects on human health [2–4]. For example,

heat waves and cold spells have significantly increased the mortality rate in the older population in The Netherlands [5]. The El-Nino phenomena attributable to climate anomalies have been linked to outbreaks of malaria in Asia, Africa and South America [6]. Health effects, such as thermal stress and infectious diseases, can be seen during extreme weather events such as periods of high temperature and rainfall [2].

Diarrhoeal disease is the one of the leading causes of childhood mortality in developing countries and is responsible for about 1·5 million children's deaths worldwide each year [7]. Unsafe water, poor sanitation and hygiene, and malnutrition are major risk factors for diarrhoeal disease. In Bangladesh, the health impacts of diarrhoeal disease account for 20%

* Author for correspondence: Dr J. Wu, Department of Environmental Sciences and Engineering, Gillings School of Global Public Health, University of North Carolina at Chapel Hill, NC, USA.
(Email: w_jianyong@hotmail.com) [J. Wu]
(Email: emch@unc.edu) [M. Emch]

of all infant deaths [8]. Several studies have examined the risk factors for diarrhoeal disease in Bangladesh including contaminated drinking water, poor personal hygiene, flooding, and socioeconomic factors [9–11]. Meteorological factors, such as temperature and rainfall, also impact on the incidence of diarrhoeal disease in Bangladesh. For example, one study reported rainfall and ambient temperature to be positively associated with diarrhoeal diseases in Dhaka [12]; another study found that diarrhoea caused by rotavirus was positively associated with high temperatures while inversely related to relative humidity in Dhaka [13]. However, there has not been an epidemiological study conducted in Bangladesh that has investigated the impact of weather events, particularly, extreme weather events including temperature and rainfall extremes, on childhood diarrhoea in rural Bangladesh.

Utilizing the unique childhood diarrhoea dataset collected at the International Centre for Diarrhoeal Disease Research in Bangladesh (icddr,b) from 2000 to 2006, we investigated the relationship between childhood diarrhoea and weather patterns in Matlab, Bangladesh at the *bari* level (a *bari* is a patrilineally related cluster of households). The objective of this study was to determine whether increases in temperature and rainfall lead to increases in childhood diarrhoea, and how extreme weather events (hot days and days with heavy rain) affect the prevalence of childhood diarrhoea in rural areas.

METHODS

Study area

The study was conducted in 142 villages of Matlab, Bangladesh (Fig. 1), which is ~50 km southeast of Dhaka. Each village is composed of a number of *baris*. Nearly 220 000 people live in ~10 000 *baris* in the study area. Matlab is a typical rural area and most people earn their livelihoods in subsistence farming and fishing [10, 11].

Diarrhoea and climate data

We obtained community-based diarrhoea data for children (<5 years) from 2000 to 2006 from icddr,b. A diarrhoea case is defined as ≥ 3 liquid stools during a 24-h period. As described previously [11], community health research workers from icddr,b visited each household once each month and asked parents whether their children had demonstrated symptoms of diarrhoeal diseases in past 24 h. The number of

children and the size of the population in each *bari* were also recorded. In addition, data about whether a household was in a flood-controlled area and socioeconomic status (SES) or wealth were collected as described previously [10, 11]. The flood-control data are binary data, which is based on whether a *bari* is protected by a flood-control embankment in Matlab. The SES data are categorical, which include five classes and are numbered from 1 (low status) to 5 (high status) [14].

Daily temperature data for Dhaka were obtained from the National Climatic Data Center of the USA, which include four measurements of temperature ($^{\circ}\text{C}$) each day. We used the mean of the four measurements as the daily temperature. The daily rainfall data (in mm) were obtained from the National Water Resources Database (NWRD) maintained by the Water Resources Planning Organization (WARPO) in Bangladesh. We calculated the average temperature for 7 days, 15 days, and 1 month immediately before a visit for disease surveillance. Using the same approach, we calculated the average rainfall in 7 days, 15 days, and 1 month before a surveillance visit. We used the average rainfall instead of the total rainfall because the impacts of these average rainfall variables are comparable.

Definition of extreme weather events

To examine the relationship between childhood diarrhoea and extreme weather events, we defined hot days and days with heavy rainfall using historical data. We used 30 years of daily temperature data (1982–2011) as a reference and defined the 90th percentile of the distribution as the threshold to define hot days. If the daily temperature was above this threshold, it was defined as a hot day. Then we calculated the number of hot days in 7 days, 15 days, and 1 month immediately before a surveillance visit. The days with heavy rainfall (heavy-rain days) were defined using a similar approach. We used 11 years' daily rainfall data (1998–2008) as the reference and the 90th percentile as the threshold to define days with heavy rainfall. Then we calculated the number of days with heavy rainfall in the 7 days, 15 days, and 1 month before a surveillance visit.

Statistical analysis

To examine the trend of three time serial variables (i.e. cases of childhood diarrhoea, monthly average

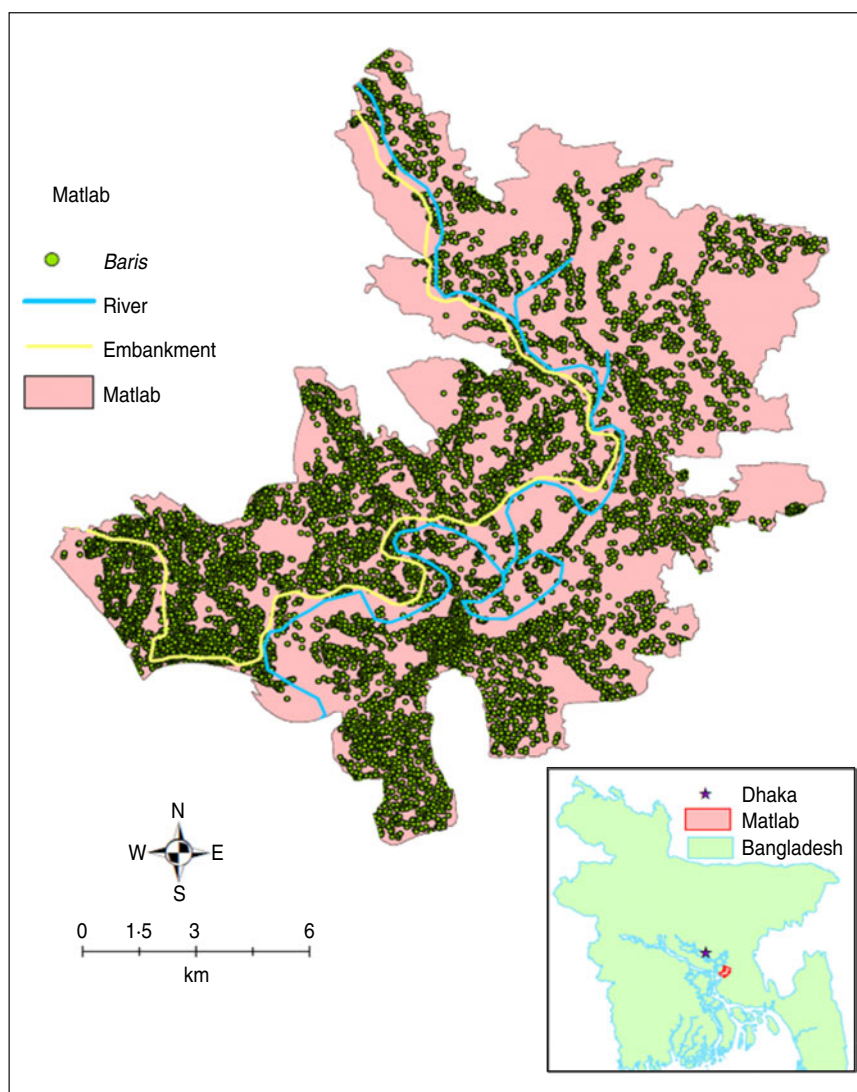


Fig. 1. The study area, Matlab, Bangladesh. The green dots represent *baris*, and the yellow line represents the flood-control embankment. In the west of the flood-control embankment, the area is protected from floods.

temperature, monthly average rainfall in 7 years), a seasonal-trend decomposition analysis was conducted on these variables using the STL function in R package and each variable was decomposed into three components, i.e. trend, seasonal component and residual component [15].

Simple logistic regression models were used to pre-examine the relationships between childhood diarrhoea, and temperature and rainfall, next multivariable logistic regression models were used to examine these relationships adjusting for the number of children, flood-control status, and SES. In both simple and multivariable logistic regression models diarrhoea case is the dependent variable, which has two values (1, *bari* having diarrhoea cases; 0, *bari* having no diarrhoea cases). The independent variables include two

groups of variables for temperature and rainfall. As described above, there are six variables derived from temperature, which are the average temperature in 7 days, 15 days and 1 month immediately before a surveillance visit (T_{m7} , T_{m15} and T_{mM}), the number of hot days in 7 days, 15 days and 1 month immediately before a visit (N_{HD7} , N_{HD15} and N_{HDM}). There are also six variables derived from rainfall, including the average rainfall in 7 days, 15 days and 1 month immediately before a visit (R_{m7} , R_{m15} and R_{mM}), the number of heavy-rain days in 7 days, 15 days and 1 month immediately before a visit (N_{HR7} , N_{HR15} and N_{HRM}). In the multivariable regression analysis, each of these variables and three other control variables (number of children, flood-control status, SES) were included in models as independent variables.

In the logistic models, we rounded the average temperature and rainfall data into integers, therefore, these variables were used as discrete variables instead of continuous variables. We did not check the assumption of linearity for weather variables because this is unnecessary in logistic regression analysis [16].

In addition, we built a forward stepwise logistic regression model to screen important risk factors and examine confounding effects between temperature and rainfall. Considering collinearity (tested by Spearman rank correlation) of these variables, we selected four variables from 12 variables as representative, which included T_{m15} , N_{HD15} , R_{m15} and N_{HR15} and three control variables. Forward selection procedures were used to remove insignificant variables from the model. We set the significance level at 0.05 as the cut-off for a variable entering and remaining in the model. Considering biologically plausible interactions, we tested interaction effects between average temperature in 15 days and average rainfall in 15 days. To test this possibility, we put an interaction term, namely $T_{m15} * R_{m15}$, into the model. The fit of the model was assessed by several goodness-of-fit indices, including log-likelihood and Akaike's Information Criterion (AIC).

Odds ratios (ORs) were calculated to indicate the association between childhood diarrhoea and these independent variables. We also calculated the increase in diarrhoea risk associated with the change of a certain factor in one unit using $(OR - 1) \times 100\%$ and expressed it as a percentage [17]. All statistical analyses were conducted using SAS 9.3 (SAS Inc., USA).

RESULTS

Description of the data

The seasonal-trend decompositions of daily diarrhoea cases, monthly average temperature and monthly average rainfall are illustrated in Figures 2–4, respectively. The number of childhood diarrhoea cases in each month was calculated based on one visit each month, which ranged from 219 to 1378 cases (mean 768 cases). A seasonal peak in cases was more likely to appear in March and April for the entire study period (2000–2006), and there was a decreasing trend in the number of cases from June 2003 to December 2006. The prevalence of childhood diarrhoea (monthly cases/total number of children) ranged from 0.23 to 1.33 cases/child per month, with a mean of 0.75 case/child per month. During 2000–2006, there were

16 551 diarrhoea cases reported in the flood-protected area, while the number of cases was 2.9 times higher in the unprotected area. The monthly average temperature has clear seasonal patterns. In each year, the average temperature is lowest in January, and highest in June, July and August with slight variations. The monthly average temperature ranged from 16.2 °C to 30.4 °C (mean 25.8 °C). The monthly average rainfall also shows a clear seasonal pattern. There is little rainfall from November to March; however, the highest rainfall month varies in different years. The highest rainfall month was June from 2001 to 2003, May in 2000, July in 2005 and September in 2004 and 2006. The monthly average rainfall ranged from 0 mm to 23.5 mm (mean 5.7 mm).

Associations between childhood diarrhoea and meteorological factors based on univariable models

The results of the simple regression models show that 12 meteorological factors are all positively associated with childhood diarrhoea ($OR > 1.00$, $P < 0.01$) (Table 1). The results show that the ORs for the average temperature (T_{m7} , T_{m15} , T_{mM}) and rainfall (R_{m7} , R_{m15} , R_{mM}) variables ranged from 1.002–1.012 and 1.003–1.009, respectively. The results also show that a 1-day increase in the number of hot days and heavy-rain days is associated with an increase in the risk of childhood diarrhoea by 1–3% and 1.3–5.3%, respectively.

Associations between childhood diarrhoea and meteorological factors based on multivariable models

When the effects of the number of children, flood-control status, and SES are controlled in the models, the associations between childhood diarrhoea and temperature variables remain significant ($P < 0.05$) with OR values of 1.003 [95% confidence interval (CI) 1.000–1.006], 1.005 (95% CI 1.002–1.008), and 1.008 (95% CI 1.005–1.011), respectively, suggesting that a higher average temperature is related to a higher risk of childhood diarrhoea. The positive associations between the number of hot days and childhood diarrhoea also held ($P < 0.001$). The OR values for these three hot-days variable are 1.018 (95% CI 1.012–1.024), 1.022 (95% CI 1.016–1.028) and 1.013 (95% CI 1.010–1.016), respectively (Table 2).

After adjusting for the number of children, flood-control status, and SES, similar results were obtained for rainfall variables. The OR values for these three

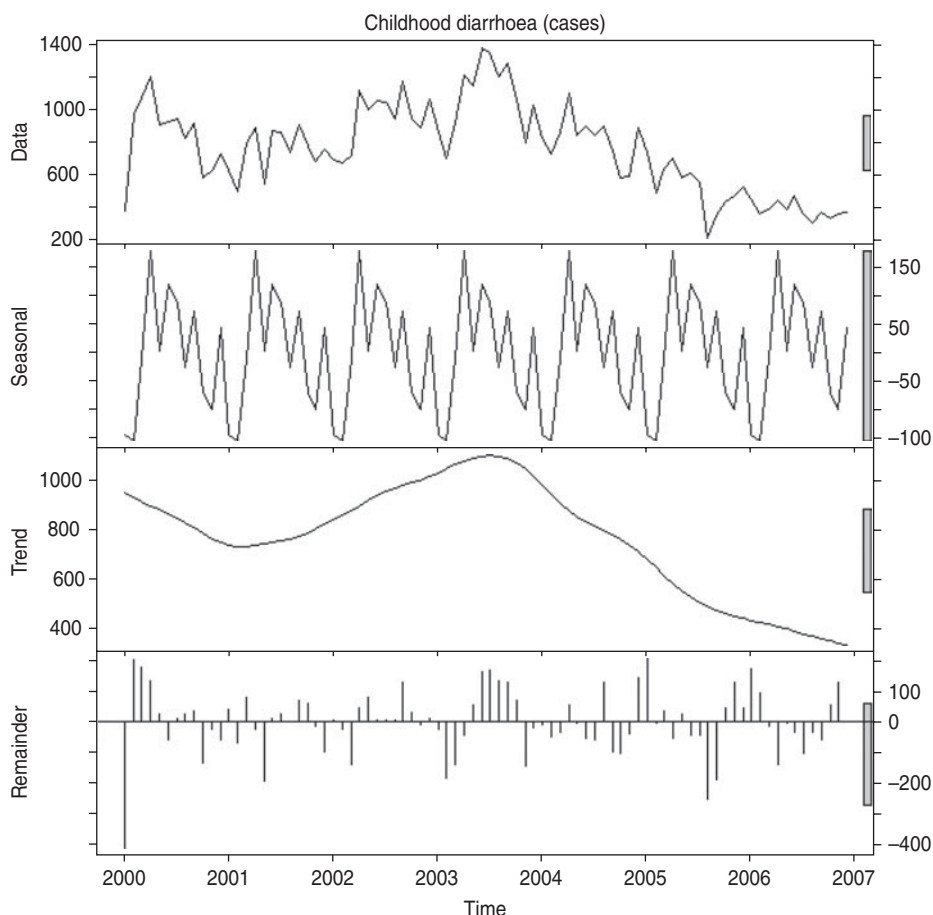


Fig. 2. Seasonal-trend decomposition analysis of childhood diarrhoea cases in Matlab, Bangladesh during 2000–2006. The data were decomposed into three components (seasonal, trend, remainder) using the STL function in R package.

average rainfall variables ($Rm7$, $Rm15$, RmM) were 1.005 (95% CI 1.003–1.006), 1.004 (95% CI 1.002–1.006) and 1.007 (95% CI 1.005–1.009), respectively. For the three heavy-rain-day variables, the OR values and their 95% CIs are virtually the same as those obtained by the simple logistic regression models (Table 3).

Associations between childhood diarrhoea and meteorological factors based on multivariable stepwise models

Forward stepwise logistic regression analysis was conducted to examine the impacts of multiple variables on childhood diarrhoea. In the final model, seven variables had effects on the disease (Table 4). The number of heavy-rain days (N_{HR15}) and the number of hot days (N_{HD15}) had positive effects on the risk of diarrhoea, of which the ORs were 1.031 (95% CI 1.019–1.044, $P < 0.001$) and 1.018 (95% CI 1.011–1.025, $P < 0.001$), respectively. The average rainfall

($Rm15$) and the average temperature ($Tm15$) had very weak and negative effects on childhood diarrhoea. The ORs for both variables were 0.996 and their 95% CIs were 0.991–1.000 and 0.992–1.000, respectively. Compared to the above analyses when rainfall and temperature variables were put in models separately, the effects of $Tm15$ and $Rm15$ changed from positive to negative. This result indicates that for every 1 °C increase in $Tm15$, the odds of a *bari* having a case of diarrhoea increases by 0.996 when controlling for N_{HR15} , $Rm15$, N_{HD15} , number of children, flood control, and SES. Similarly, a 1-mm increase in $Rm15$ will increase the odds of a *bari* having a case of diarrhoea by 0.996 when controlling the remaining six variables. The test of interaction effects showed that the effect of the interaction term ($Rm15 * Tm15$) on childhood diarrhoea is not significant ($P = 0.7059$).

The effects of the number children in a *bari*, flood-control embankment, and SES are the same as that shown in the above analyses, namely, a *bari* with

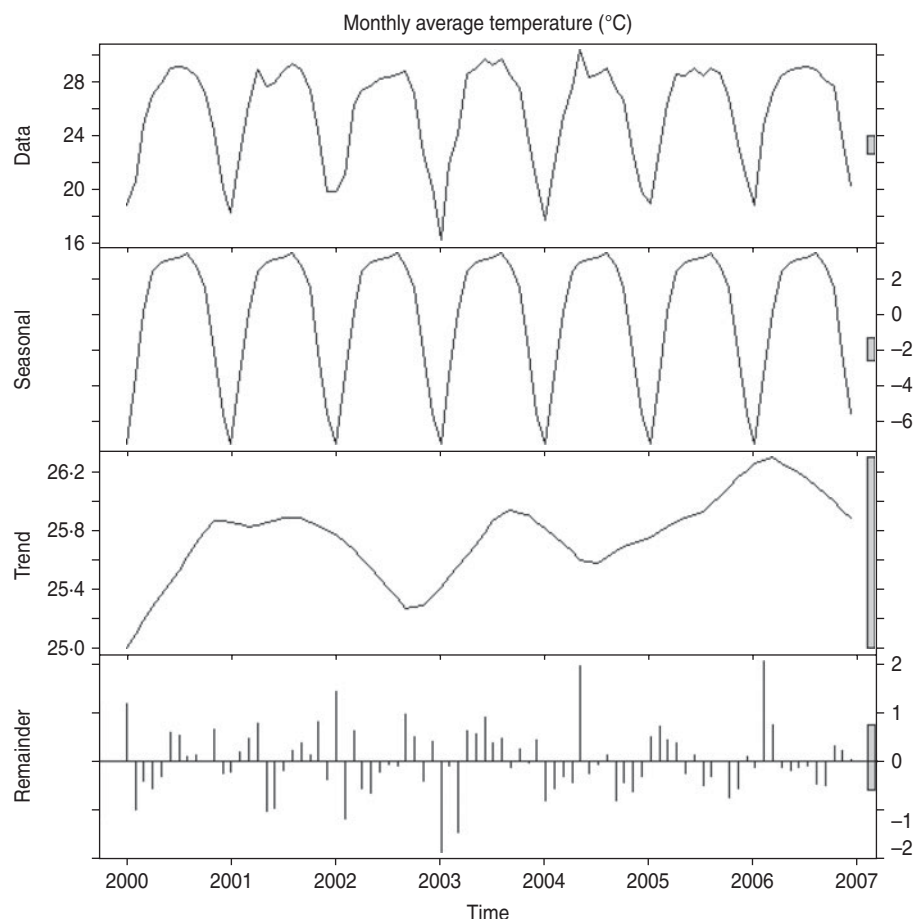


Fig. 3. Seasonal-trend decomposition analysis of the monthly average temperature in Matlab, Bangladesh during 2000–2006. The data were decomposed into three components (seasonal, trend, remainder) using the STL function in R package.

more children has a higher risk of diarrhoea than a *bari* with fewer children; a *bari* in a flood-protected area has a lower risk of diarrhoea than a *bari* in an un-protected area; and a *bari* with better SES has a lower risk of diarrhoea than a *bari* with poor SES.

DISCUSSION

There is growing concern that future climate change will increase the prevalence of waterborne diseases [18]. Our study shows that increases in rainfall and temperature are positively associated with the risk of childhood diarrhoea. Although impacts of meteorological factors such as temperature, rainfall, and El Nino events on diarrhoeal diseases have been investigated in several areas, e.g. Dhaka, Lima, and some Pacific islands [12, 19, 20], this 7-year study in rural Bangladesh provides new evidence that meteorological factors are potential risk factors for the prevalence of diarrhoeal diseases in children aged <5 years.

High temperature exerts effects on diarrhoeal disease in many ways. First, high temperature increases the exposure to bacterial and parasitic pathogens [21] because most diarrhoeal pathogens grow faster and survive longer in higher temperatures, which increases the chance to contaminate food and water [18]. For example, cholera and *Salmonella* proliferate more rapidly at higher temperatures [2]. In addition, high temperatures may lead to an increased consumption of water, which promotes diarrhoeal disease transmission [22]. High temperatures can also cause dehydration, heat cramps, and heat exhaustion [23, 24], which can weaken children's immune response to microbial infections [22, 25]. The positive association between diarrhoea cases and temperature is consistent with studies in Peru, Fiji, and Dhaka, where a 1 °C increase in temperature may cause an increase in diarrhoea cases by 8%, 3%, and 6%, respectively [12, 19, 20]. The effect of the increase in temperature on diarrhoea in this study is relatively mild, suggesting

Table 1. The association between childhood diarrhoea and temperature and rainfall variables in Matlab, Bangladesh during 2000–2006, analyzed by univariable logistic regression models (measurement unit: bari)

Temperature (sample size, N = 389921)				Rainfall (sample size, N = 389921)			
Independent variable	OR	95% CI	P	Independent variable	OR	95% CI	P
Tm7	1.004	1.002–1.006	0.002	Rm7	1.006	1.004–1.007	<0.001
Tm15	1.006	1.004–1.009	<0.001	Rm15	1.005	1.003–1.006	<0.001
TmM	1.009	1.007–1.012	<0.001	RmM	1.007	1.006–1.009	<0.001
N _{HD7}	1.030	1.022–1.038	<0.001	N _{HR7}	1.053	1.044–1.062	<0.001
N _{HD15}	1.015	1.010–1.020	<0.001	N _{HR15}	1.022	1.017–1.028	<0.001
N _{HDM}	1.010	1.008–1.013	<0.001	N _{HRM}	1.013	1.010–1.016	<0.001

OR, Odds ratio; CI, confidence interval.

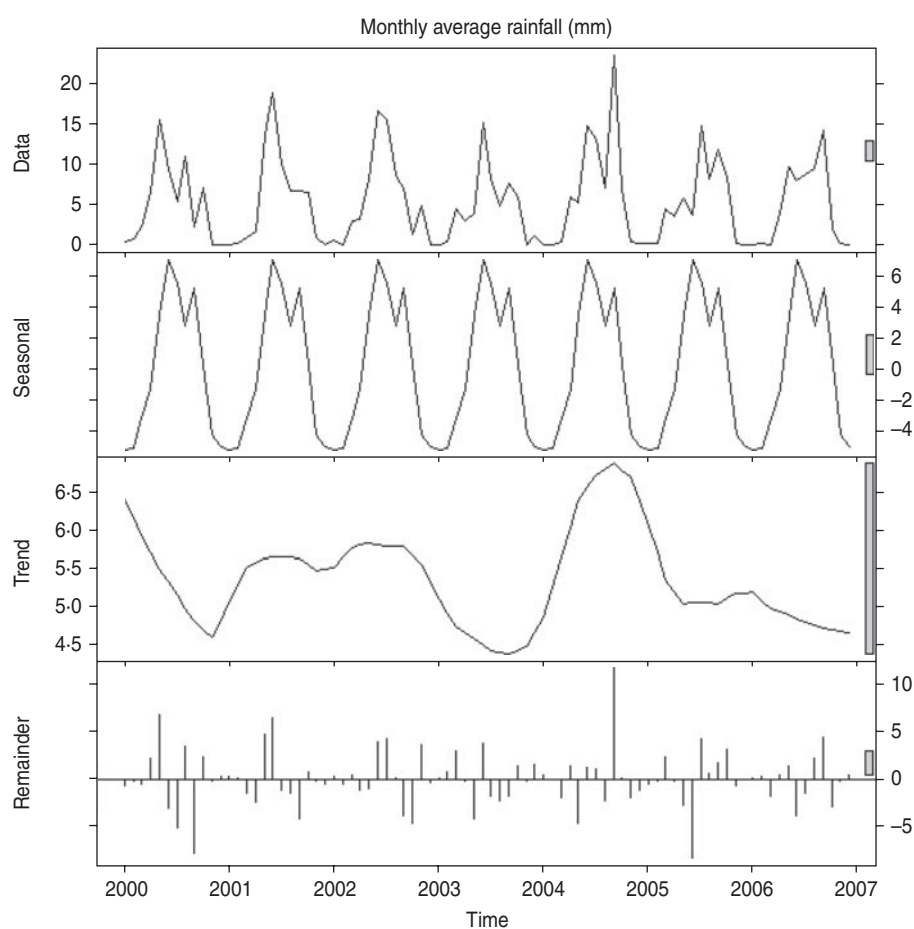


Fig. 4. Seasonal-trend decomposition analysis of the monthly average rainfall in Matlab, Bangladesh during 2000–2006. The data were decomposed into three components (seasonal, trend, remainder) using the STL function in R package.

the different effects of temperature vary in different regions and on different types of diarrhoeal diseases [26].

The impact of heavy rainfall on diarrhoeal disease have been well documented [12, 20, 27]. Rainfall can exacerbate faecal contamination in water bodies and

prompt the microbial transport from contaminated areas to uncontaminated areas, thus increasing the incidence of diarrhoeal disease. For example, a study on microbial quality in a watershed found that heavy precipitation led to sharp increases of *E. coli* concentrations [28]. A recent study on tubewell water

Table 2. The association between childhood diarrhoea and temperature variables in Matlab, Bangladesh during 2000–2006, analysed multivariable logistic regression models (measurement unit: bari)

No. analysis	Independent variable	OR	95% CI	P
1	Tm7	1.003	1.000–1.006	0.022
	No. children	1.362	1.358–1.366	<0.001
	Flood control	0.757	0.740–0.775	<0.001
	SES	0.874	0.864–0.885	<0.001
2	Tm15	1.005	1.002–1.008	<0.001
	No. children	1.362	1.358–1.366	<0.001
	Flood control	0.757	0.740–0.775	<0.001
	SES	0.874	0.864–0.885	<0.001
3	TmM	1.008	1.005–1.011	<0.001
	No. children	1.362	1.358–1.366	<0.001
	Flood control	0.757	0.740–0.775	<0.001
	SES	0.874	0.864–0.885	<0.001
4	N _{HD7}	1.018	1.012–1.024	<0.001
	No. children	1.362	1.358–1.366	<0.001
	Flood control	0.757	0.740–0.775	<0.001
	SES	0.874	0.864–0.885	<0.001
5	N _{HD15}	1.022	1.016–1.028	<0.001
	No. children	1.362	1.358–1.366	<0.001
	Flood control	0.757	0.740–0.775	<0.001
	SES	0.874	0.864–0.885	<0.001
6	N _{HDM}	1.013	1.010–1.016	<0.001
	No. children	1.362	1.358–1.366	<0.001
	Flood control	0.757	0.740–0.775	<0.001
	SES	0.874	0.864–0.885	<0.001

OR, Odds ratio; CI, confidence interval; SES, socioeconomic status.

Sample size: $N=382834$.

quality in rural Bangladesh also found that there was a positive correlation between rainfall and the frequency of *E. coli* in ground water [29]. In addition, heavy rainfall may cause floods, another risk factor associated with diarrhoeal diseases in Bangladesh [30]. Flood events are often preceded by heavy rain. During heavy rain, pathogens from latrines or other sources are flushed to water bodies and then dispersed. As a result, people in flood-prone areas are more likely to be exposed to contaminated water. Although a number of studies have examined the association between the increases in temperature or rainfall and diarrhoeal disease, the association between diarrhoeal disease and the number of extreme weather events has rarely been investigated.

It is possible that the positive associations between childhood diarrhoea and the average temperature

Table 3. The association between childhood diarrhoea and rainfall variables in Matlab, Bangladesh during 2000–2006, analysed multivariable logistic regression models (measurement unit: bari)

No. analysis	Independent variable	OR	95% CI	P
1	Rm7	1.005	1.003–1.006	<0.001
	No. children	1.361	1.357–1.365	<0.001
	Flood control	0.757	0.740–0.775	<0.001
	SES	0.874	0.864–0.885	<0.001
2	Rm15	1.004	1.002–1.006	<0.001
	No. children	1.362	1.358–1.366	<0.001
	Flood control	0.757	0.740–0.775	<0.001
	SES	0.874	0.864–0.885	<0.001
3	RmM	1.007	1.005–1.009	<0.001
	No. children	1.362	1.358–1.366	<0.001
	Flood control	0.757	0.740–0.775	<0.001
	SES	0.874	0.864–0.885	<0.001
4	N _{HR7}	1.046	1.036–1.056	<0.001
	No. children	1.361	1.357–1.365	<0.001
	Flood control	0.757	0.740–0.775	<0.001
	SES	0.874	0.864–0.885	<0.001
5	N _{HR15}	1.018	1.012–1.024	<0.001
	No. children	1.361	1.358–1.365	<0.001
	Flood control	0.757	0.740–0.775	<0.001
	SES	0.874	0.864–0.885	<0.001
6	N _{HRM}	1.012	1.008–1.015	<0.001
	No. children	1.362	1.358–1.366	<0.001
	Flood control	0.757	0.740–0.775	<0.001
	SES	0.874	0.864–0.885	<0.001

OR, Odds ratio; CI, confidence interval; SES, socioeconomic status.

Sample size: $N=382834$.

variables are the confounding effects of the number of hot days. As shown by the results of the stepwise model, the OR direction of Tm15 changes from positive to negative. Similarly, the positive associations for the average rainfall variables might be the confounding effects of the number of heavy-rain days. The negative associations for Tm 15 and Rm15 in the multivariable stepwise model suggest that the increase in the average temperature or rainfall might protect children against diarrhoeal disease, which is unexpected. It also suggests that the effects of average temperature and rainfall factors on childhood diarrhoea are complicated, which needs further investigation.

Our results suggest that meteorological factors have mild effects on childhood diarrhoea, which may be because other factors, such as water, sanitation, personal hygiene and nutrition, play a dominant role in the

Table 4. *The stepwise logistic regression analysis of the association between childhood diarrhoea, and temperature and rainfall variables in Matlab, Bangladesh during 2000–2006 (measurement unit: bari)*

Independent variable	OR	95% CI	P
Rm15	0.996	0.992–1.000	0.028
N _{HR15}	1.031	1.019–1.044	<0.001
Tm15	0.996	0.991–1.000	0.039
N _{HD15}	1.018	1.011–1.025	<0.001
No. children	1.362	1.358–1.366	<0.001
Flood control	0.757	0.740–0.775	<0.001
SES	0.874	0.864–0.885	<0.001

OR, Odds ratio; CI, confidence interval; SES, socioeconomic status.

Sample size: $N=382834$.

occurrence of diarrhoeal disease. With efforts to improve water quality, sanitation, hygiene, and nutrition, the incidence of childhood diarrhoea is decreasing, as indicated by the number of diarrhoea cases since 2003 in our study, although the specific reason is not yet clear. However, future climate change may render a higher frequency of extreme weather events, such as hot days and heavy rainfall, thus bringing a considerable increase in diarrhoea cases. As projected in six regions (South America, North Africa, Middle East, equatorial Africa, southern Africa, Southeast Asia) under different scenarios, the increase of diarrhoea risk would be 8–11% by 2010–2039 and 22–29% by 2070–2099, respectively [26]. Given that Bangladesh has a dense population, climate factors will have an increasing influence on diarrhoeal disease. To mitigate the adverse health effects of climate variability, a few recommendations are listed below for researchers and policy makers: (1) strengthen disease surveillance systems at regional and community level and improve understanding of the link between diarrhoeal disease and climate factors; (2) improve weather forecasting capacity at regional level and develop extreme weather-event early-warning systems; and (3) be aware of the potential health impacts of climate variability and change, specifically, pay attention to the potential contamination of household drinking water and children's hygiene during extreme weather events.

This study has several limitations. First, we only analysed diarrhoeal disease data in 7 years and rainfall data in 11 years. A longer time period is necessary to fully understand the health effects of climate

variability. Second, we did not consider temporal autocorrelation of diarrhoeal disease data in our model. Since temperature and rainfall have clear seasonality, it is possible that the association between diarrhoea and climate factors is a confounding effect of season, although this possibility is very low because the numbers of diarrhoea cases does not vary much by month. Third, our definitions for hot days and heavy-rain days are arbitrary. It is likely that the choice of different definitions will obtain different results about the association between diarrhoea and climate factors. Currently, there are no universally accepted definitions for hot days or heavy-rain days. In general, researchers use the 90, 95, or 97.5 percentiles of historical data as the threshold to define weather extremes. In this study, we chose 90% as the threshold because there would have been too few extreme weather events included under a higher threshold and it would have been difficult to statistically assess the impact of extreme weather events if the number of extreme weather events was very low. Finally, we only considered the short time lags (7 days, 15 days, 1 month) between extreme events and resulting diarrhoeal disease cases. It cannot be ruled out that extreme events can lead to diarrhoeal disease at a longer time lag. For example, it was reported that there was a strong association between heavy rainfall and waterborne disease outbreaks in a 2-month time lag, particularly for groundwater contamination [27]. Given that the diarrhoea cases we examined in this study are mostly acute diarrhoea, it is reasonable to assume that the effect of extreme weather events is stronger if the time lag is shorter.

In summary, this study corroborates that meteorological factors are significantly associated with the risk of childhood diarrhoeal disease in rural Bangladesh. The extreme events indexed by the number of hot days and heavy-rain days have stronger effects on the prevalence of childhood diarrhoea. Since climate variability will exist over a long period and increase in intensity, its impact on childhood diarrhoeal disease will be more prominent. Pre-emptive actions to curb the health effects of climate change in developing countries, especially in rural areas, are necessary.

ACKNOWLEDGEMENTS

This study was conducted with the support of core donors, which provide unrestricted support to icddr, b for its operations and research. Current donors providing unrestricted support include: the Australian

International Development Agency (AusAID), the Government of the People's Republic of Bangladesh, the Canadian International Development Agency (CIDA), the Swedish International Development Cooperative Agency (Sida), and the Department for International Development, UK (DFID).

DECLARATION OF INTEREST

None.

REFERENCES

1. IPCC. Summary for policymakers. In: Climate Change 2007: the physical science basis contribution of Working Group I to the Fourth Assessment Report of the Intergovernmental Panel on Climate Change. Cambridge, UK, 2007.
2. McMichael AJ, Woodruff RE, Hales S. Climate change and human health: present and future risks. *Lancet* 2006; **367**: 859–869.
3. Frumkin H, et al. Climate change: The public health response. *American Journal of Public Health* 2008; **98**: 435–445.
4. Cann KF, et al. Extreme water-related weather and waterborne disease. *Epidemiology and Infection* 2013; **141**: 671–686.
5. Huynen M, et al. The impact of heat waves and cold spells on mortality rates in the Dutch population. *Environmental Health Perspectives* 2001; **109**: 463–470.
6. Githeko AK, et al. Climate change and vector-borne diseases: a regional analysis. *Bulletin of the World Health Organization* 2000; **78**: 1136–1147.
7. UNICEF, WHO. Diarrhoea: why children are still dying and what can be done, 2009.
8. WHO. World Health Statistics, 2007.
9. Hoque BA, et al. Sustainability of a water, sanitation and hygiene education project in rural Bangladesh: a 5-year follow-up. *Bulletin of the World Health Organization* 1996; **74**: 431–437.
10. Wu JY, et al. Increase in diarrheal disease associated with arsenic mitigation in Bangladesh. *PLoS One* 2011; **6**.
11. Wu JY, et al. Impact of tubewell access and tubewell depth on childhood diarrhea in Matlab, Bangladesh. *Environmental Health* 2011; **10**: 1–12.
12. Hashizume M, et al. Association between climate variability and hospital visits for non-cholera diarrhoea in Bangladesh: effects and vulnerable groups. *International Journal of Epidemiology* 2007; **36**: 1030–1037.
13. Hashizume M, et al. Rotavirus infections and climate variability in Dhaka, Bangladesh: a time-series analysis. *Epidemiology and Infection* 2008; **136**: 1281–1289.
14. Emch M, et al. Local population and regional environmental drivers of cholera in Bangladesh. *Environmental Health* 2010; **9**: 1–8.
15. Cleveland RB, et al. STL: a seasonal-trend decomposition procedure based on loess. *Journal of Official Statistics* 1990; **6**: 3–73.
16. Bewick V, Cheek L, Ball J. Statistics review 14: logistic regression. *Critical Care* 2005; **9**: 112–118.
17. LaValley MP. Logistic regression. *Circulation* 2008; **117**: 2395–2399.
18. Rose JB, et al. Climate variability and change in the United States: potential impacts on water- and foodborne diseases caused by microbiologic agents. *Environmental Health Perspectives* 2001; **109**: 211–221.
19. Checkley W, et al. Effects of El Nino and ambient temperature on hospital admissions for diarrhoeal diseases in Peruvian children. *Lancet* 2000; **355**: 442–450.
20. Singh RBK, et al. The influence of climate variation and change on diarrheal disease in the Pacific Islands. *Environmental Health Perspectives* 2001; **109**: 155–159.
21. Xu ZW, et al. Impact of ambient temperature on children's health: a systematic review. *Environmental Research* 2012; **117**: 120–131.
22. Chou WC, et al. Modeling the impact of climate variability on diarrhea-associated diseases in Taiwan (1996–2007). *Science of the Total Environment* 2010; **409**: 43–51.
23. Kovats RS, Hajat S. Heat stress and public health: a critical review. *Annual Review of Public Health* 2008; **29**: 41–55.
24. Jardine DS. Heat illness and heat stroke. *Pediatrics in Review* 2007; **28**: 249–258.
25. Jin Y, et al. Chronic heat stress weakened the innate immunity and increased the virulence of highly pathogenic avian influenza virus H5N1 in mice. *Journal of Biomedicine and Biotechnology* 2011; **2011**: 1–10.
26. Kolstad EW, Johansson KA. Uncertainties associated with quantifying climate change impacts on human health: a case study for diarrhea. *Environmental Health Perspectives* 2011; **119**: 299–305.
27. Curriero FC, et al. The association between extreme precipitation and waterborne disease outbreaks in the United States, 1948–1994. *American Journal of Public Health* 2001; **91**: 1194–1199.
28. Wu J, Rees P, Dorner S. Variability of *E. coli* density and sources in an urban watershed. *Journal of Water and Health* 2011; **9**: 94–106.
29. van Geen A, et al. Fecal contamination of shallow tubewells in Bangladesh inversely related to arsenic. *Environmental Science and Technology* 2011; **45**: 1199–1205.
30. Schwartz BS, et al. Diarrheal epidemics in Dhaka, Bangladesh, during three consecutive floods: 1988, 1998, and 2004. *American Journal of Tropical Medicine and Hygiene* 2006; **74**: 1067–1073.