

Geological Magazine

with which is incorporated

The Geologist

founded in 1864 by the late DR HENRY WOODWARD, F.R.S.

Edited by C. P. HUGHES
N. H. WOODCOCK
I. N. McCAVE
and M. J. BICKLE

Assistant editor MRS J. M. HOLLAND

Editorial Advisory Board

M. P. COWARD
K. J. McNAMARA
J. A. PEARCE
A. J. REEDMAN
J. R. WILSON
J. A. WOLFF
B. W. D. YARDLEY



**CAMBRIDGE
UNIVERSITY PRESS**

Volume 129 of Whole Series

January–December 1992

PUBLISHED BY
THE PRESS SYNDICATE OF THE UNIVERSITY OF CAMBRIDGE
The Pitt Building, Trumpington Street, Cambridge CB2 1RP
40 West 20th Street, New York, NY 10011-4211, USA
10 Stamford Road, Oakleigh, Victoria, Australia

© Cambridge University Press 1992

Pagination and dates of publication in this volume

- Number 1: pp. 1-128 January 1992
- 2: pp. 129-256 March 1992
- 3: pp. 257-384 May 1992
- 4: pp. 385-512 July 1992
- 5: pp. 513-656 September 1992
- 6: pp. 657-800 November 1992

Printed in Great Britain by the University Press, Cambridge

Contents

(Figures in bold type denote number of issue)

ARTICLES

- ALVI, S. H. & RAZA, M.
Geochemical evidence for the volcanic arc tectonic setting of the Dhanjori volcanics, Singhbhum craton, eastern India, **3**, 337
- BALL, T. K., DAVIES, J. R., WATERS, R. A. & ZALASIEWICZ, J. A.
Geochemical discrimination of Silurian mudstones according to depositional process and provenance within the Southern Welsh Basin, **5**, 567
- BERNSTEIN, S., ROSING, M. T., BROOKS, C. K. & BIRD, D. K.
An ocean-ridge type magma chamber at a passive volcanic, continental margin: the Kap Edvard Holm layered gabbro complex, East Greenland, **4**, 437
- BEVINS, R. E., LEES, G. J. & ROACH, R. A.
Petrogenesis of Ordovician igneous rocks in the southern part of the Welsh Basin, **5**, 615
- BJØRNERUD, M.
Evidence for extensive post-Caledonian karst development in southwestern Spitsbergen, **4**, 465
- BRASIER, M. D., ANDERSON, M. M. & CORFIELD, R. M.
Oxygen and carbon isotope stratigraphy of early Cambrian carbonates in southeastern Newfoundland and England, **3**, 265
- BRASIER, M. D.
Global ocean–atmosphere change across the Precambrian–Cambrian transition, **2**, 161
- CARRUTHERS, R. M., FLETCHER, C. J. N., McDONALD, A. J. W. & EVANS, R. B.
Some constraints on the form of the Welsh Basin from regional gravity and aeromagnetic data, with particular reference to Central Wales, **5**, 515
- CHANNELL, J. E. T., McCABE, C., TORSVIK, T. H., TRENCH, A. & WOODCOCK, N. H.
Palaeozoic palaeomagnetic studies in the Welsh Basin – recent advances, **5**, 533
- CHEVALLIER, L., REX, D. C. & VERWOERD, W. J.
Geology and geochronology of Inaccessible Island, South Atlantic, **1**, 1
- CHOUDHARY, A. K., HARRIS, N. B. W., VAN CALSTEREN, P. & HAWKESWORTH, C. J.
Pan-African charnockite formation in Kerala, South India, **3**, 257
- CLAOUÉ-LONG, J. C., JONES, P. J., ROBERTS, J. & MAXWELL, S.
The numerical age of the Devonian–Carboniferous boundary, **3**, 281
- COPE, J. C. W. & RUSHTON, A. W. A.
Cambrian and early Tremadoc rocks of the Llangynog Inlier, Dyfed, South Wales, **5**, 543
- DENTITH, M. C., TRENCH, A. & BLUCK, B. J.
Geophysical constraints on the nature of the Highland Boundary Fault Zone in western Scotland, **4**, 411
- DYPVIK, H.
Sedimentary rhythms in the Jurassic and Cretaceous of Svalbard, **1**, 93
- EVANS, J. A.
Geochemical and isotope composition of pebbles from the Caban Conglomerate Formation and their bearing on the source of Welsh Palaeozoic sedimentary rocks, **5**, 581
- FARMER, J., VIDAL, G., MOCZYDŁOWSKA, M., STRAUSS, H., AHLBERG, P. & SIEDLECKA, A.
Eldiacaran fossils from the Innerelv Member (late Proterozoic) of the Tanafjorden area, northeastern Finnmark, **2**, 181
- FORDHAM, B. G.
Chronometric calibration of mid-Ordovician to Tournaisian conodont zones: a compilation from recent graphic-correlation and isotope studies, **6**, 709

- FORTEY, R. A. & OWENS, R. M.
The Habberley Formation: youngest Tremadoc in the Welsh Borderlands, **5**, 553
- FREY, R. W. & GOLDRING, R.
Marine event beds and recolonization surfaces as revealed by trace fossil analysis, **3**, 325
- GIBBARD, P. L., WEST, R. G., ANDREW, R. & PETTIT, M.
The margin of a Middle Pleistocene ice advance at Tottenhill, Norfolk, England, **1**, 59
- GRAY, J., BOUCOT, A. J., GRAHN, Y. & HIMES, G.
A new record of early Silurian land plant spores from the Paraná Basin, Paraguay (Malvinokaffric Realm), **6**, 741
- HARLAND, W. B., SCOTT, R. A., AUCKLAND, K. A. & SNAPE, I.
The Ny Friesland Orogen, Spitsbergen, **6**, 679
- HSÜ, K. J.
Is Gaia endothermic?, **2**, 129
- JENKINS, R. J. F., MCKIRDY, D. M., FOSTER, C. B., O'LEARY, T. & PELL, S. D.
The record and stratigraphic implications of organic-walled microfossils from the Ediacaran (terminal Proterozoic) of South Australia, **4**, 401
- JONES, G., DE WEVER, P. & ROBERTSON, A. H. F.
Significance of radiolarian age data to the Mesozoic tectonic and sedimentary evolution of the northern Pindos Mountains, Greece, **4**, 385
- JOWSEY, N. L., PARKIN, D. L., SLIPPER, I. J., SMITH, A. P. C. & WALSH, P. T.
The geology and geomorphology of the Beacon Cottage Farm Outlier, St Agnes, Cornwall, **1**, 101
- KELLY, S. R. A. & MONCRIEFF, A. C. M.
Marine molluscan constraints on the age of Cretaceous fossil forests of Alexander Island, Antarctica, **6**, 771
- KENT, R. W., GHOSE, N. C., PAUL, P. R., HASSAN, M. J. & SAUNDERS, A. D.
Coal–magma interaction: an integrated model for the emplacement of cylindrical intrusions, **6**, 753
- MARSHALL, J. D.
Climatic and oceanographic isotopic signals from the carbonate rock record and their preservation, **2**, 143
- MCCAFFREY, W. D., BARRON, H. F., MOLYNEUX, S. G. & KNELLER, B. C.
Recycled acritarchs as provenance indicators: implications for Caledonian terrane reconstruction, **4**, 457
- MCDONALD, A. J. W., FLETCHER, C. J. N., CARRUTHERS, R. M., WILSON, D. & EVANS, R. B.
Interpretation of the regional gravity and magnetic surveys of Wales, using shaded relief and Euler deconvolution techniques, **5**, 523
- MILLWARD, D. & MOLYNEUX, S. G.
Field and biostratigraphic evidence for an unconformity at the base of the Eycott Volcanic Group in the English Lake District, **1**, 77
- MOCZYDŁOWSKA, M. & VIDAL, G.
Phytoplankton from the Lower Cambrian Læså formation on Bornholm, Denmark: biostratigraphy and palaeoenvironmental constraints, **1**, 17
- MORTON, A. C., DAVIES, J. R. & WATERS, R. A.
Heavy minerals as a guide to turbidite provenance in the Lower Palaeozoic Southern Welsh Basin: a pilot study, **5**, 573
- NARANJO, J. A.
Chemistry and petrological evolution of the Lastarria volcanic complex in the north Chilean Andes, **6**, 723
- NARANJO, J. A., SPARKS, R. S. J., STASIUK, M. V., MORENO, H. & ABLAY, G. J.
Morphological, structural and textural variations in the 1988–1990 andesite lava of Lonquimay Volcano, Chile, **6**, 657
- ORŁOWSKI, S.
Cambrian stratigraphy and stage subdivision in the Holy Cross Mountains, Poland, **4**, 471
- PALACIOS, T. & VIDAL, G.
Lower Cambrian acritarchs from northern Spain: the Precambrian–Cambrian boundary and biostratigraphic implications, **4**, 421
- PRATT, W. T.
The use of kink bands to constrain fault displacements: an example from the Bala Lineament, Wales, **5**, 625

- RÄSÄNEN, M., NELLER, R., SALO, J. & JUNGNER, H.
Recent and ancient fluvial depositional systems in the Amazonian foreland basin, Peru, **3**, 293
- REINHARDT, J.
Low-pressure, high-temperature metamorphism in a compressional tectonic setting: Mary Kathleen Fold Belt, northeastern Australia, **1**, 41
- RENZ, O., BERNOULLI, D. & HOTTINGER, L.
Cretaceous ammonites from Fuerteventura, Canary Islands, **6**, 763
- ROPER, H.
Superposed structures in the Mona Complex at Rhoscolyn, Ynys Gybi, North Wales, **4**, 475
- SCHIEBER, J.
A combined petrographical–geochemical provenance study of the Newland Formation, Mid-Proterozoic of Montana, **2**, 223
- SMITH, R. D. A. & ANKETELL, J. M.
Welsh Basin ‘contourites’ reinterpreted as fine-grained turbidites: the Grogal Sandstones, **5**, 609
- SPICER, R. A. & CORFIELD, R. M.
A review of terrestrial and marine climates in the Cretaceous with implications for modelling the ‘Greenhouse Earth’, **2**, 169
- TAYLOR, K. G.
Non-marine oolitic ironstones in the Lower Cretaceous Wealden sediments of southeast England, **3**, 349
- TEMPLE, J. T. & CAVE, R.
Preliminary report on the geochemistry and mineralogy of the Nod Glas and related sediments (Ordovician) of Wales, **5**, 589
- UPTON, B. G. J., MITCHELL, R. H., LONG, A. & ASPEN, P.
Primitive olivine melanephelinite dykes from the Orkney Islands, Scotland, **3**, 319
- WEBB, J. A., FABEL, D., FINLAYSON, B. L., ELLAWAY, M., LI SHU & SPIERTZ, H.-P.
Denudation chronology from cave and river terrace levels: the case of the Buchan Karst, southeastern Australia, **3**, 307
- WILSON, D., DAVIES, J. R., WATERS, R. A. & ZALASIEWICZ, J. A.
A fault-controlled depositional model for the Aberystwyth Grits turbidite system, **5**, 595
- WOODCOCK, N. H. & FLETCHER, C. J. N.
Introduction to the Welsh Basin thematic issue, **5**, 513
- ZAGORČEV, I. S.
Neotectonic development of the Struma (Kraištid) Lineament, southwest Bulgaria and northern Greece, **2**, 197
- ZALASIEWICZ, J. A.
Two new graptolites from the early Silurian (Llandovery: Aeronian) of central Wales: an origin for monoclimal thecal morphology, **6**, 779

RAPID COMMUNICATIONS

- FIELD, M. H.
Azolla tegeliensis Florschütz from the early Pleistocene of the British Isles, **3**, 363
- GOULTY, N. R., LEGGETT, M., DOUGLAS, T. & EMELEUS, C. H.
Seismic reflection test on the granite of the Skye Tertiary igneous centre, **5**, 633
- GREENWOOD, R. C., FALLICK, A. E. & DONALDSON, C. H.
Oxygen isotope evidence for major fluid flow along the contact zone of the Rum ultrabasic intrusion, **2**, 243
- HANCOCK, J. M., RUSSELL, E. E., TAYLOR, R. H. & GALE, A. S.
The relative stratigraphic position of the foraminiferal and belemnite standards for the Campanian–Maastrichtian boundary, **6**, 787
- HOLLAND, C. H.
Orthoconic nautiloid cephalopod genera, **1**, 123
- KENNEDY, W. J., COBBAN, W. A. & SCOTT, G. R.
Ammonite correlation of the uppermost Campanian of Western Europe, the U.S. Gulf Coast, Atlantic Seaboard and Western Interior, and the numerical age of the base of the Maastrichtian, **4**, 497

SCHMITZ, B.

An iridium anomaly in the Ludlow Bone Bed from the Upper Silurian, England, **3**, 359

SEYITOĞLU, G. & SCOTT, B. C.

The age of the Büyük Menderes graben (west Turkey) and its tectonic implications, **2**, 239

SUAREZ, M. & BELL, C. M.

The oldest South American ichthyosaur from the late Triassic of northern Chile, **2**, 247

WOOD, R. A., EVANS, K. R. & ZHURAVLEV, A. Yu.

A new post-early Cambrian archaeocyath from Antarctica, **4**, 491

DISCUSSIONS

DICKIN, A. P. & BOWES, D. R.

Discussion of isotopic evidence for the extent of early Proterozoic basement in Scotland and northwest Ireland – Reply, **4**, 502

JEANS, C. V.

Discussion on the fluctuating oceanographic conditions and glacial control across the Cenomanian–Turonian boundary – Reply, **5**, 638

MUIR, R. J., FITCHES, W. R. & MALTMAN, A. J.

Discussion of isotopic evidence for the extent of early Proterozoic basement in Scotland and northwest Ireland – Comment, **4**, 501

PICKERING, K. T., BASSETT, M. G. & SIVETER, D. J.

Discussion on Silurian collision and sediment dispersal patterns in southern Britain – Comment, **3**, 367

PURVIS, K.

Discussion on a ‘reg’ palaeosol from the Lower Triassic of south Devon: stratigraphic and palaeoclimatic implications – Comment, **4**, 505

ULIČNÝ, D.

Discussion on the fluctuating oceanographic conditions and glacial control across the Cenomanian–Turonian boundary – Comment, **5**, 637

WOODCOCK, N. H. & SOPER, N. J.

Discussion on Silurian collision and sediment dispersal patterns in southern Britain – Reply, **3**, 371

WRIGHT, V. P., MARRIOTT, S. & VANSTONE, S. D.

Discussion on a ‘reg’ palaeosol from the Lower Triassic of south Devon: stratigraphic and palaeoclimatic implications – Reply, **4**, 505

REVIEWS

Advances in Ordovician Geology, **5**, 643

Air Pollution Modeling and its Application VII, **2**, 254

Applied Geophysics, 2nd ed., **6**, 795

Archaeomagnetic Dating, **3**, 380

Basin Analysis. Principles and Applications, **2**, 252

Biomarkers for Geologists: A Practical Guide to the Application of Steranes and Triterpanes in Petroleum Geology, **6**, 793

Carbonate–Siliciclastic Mixtures, **5**, 642

Controversies in Modern Geology. Evolution of Geological Theories in Sedimentology, Earth History and Tectonics, **3**, 373

Dinosaur Systematics. Approaches and Perspectives, **5**, 644

Divergent/Passive Margin Basins, **5**, 648

Evolutionary Trends, **4**, 507

Field Geology of Gneiss Terrains, **3**, 378

Flow and Reactions in Permeable Rocks, **6**, 797

- Fossil and Recent Sponges, **3**, 381
- Fossils of the Oxford Clay, **3**, 374
- Fossils. The Key to the Past, 2nd ed., **5**, 643
- Geochemistry and Mineralogy of Rare Earth Elements, **5**, 648
- Geology and Tectonics of the Karakoram Mountains, **2**, 251
- The Geology of Scotland, 3rd ed., **5**, 649
- The Geometry of Normal Faults, **5**, 641
- Glacimarine Environments: Processes and Sediments, **3**, 374
- Global Geomorphology. An Introduction to the Study of Landforms, **3**, 379
- The Growth and Decay of Ice, **3**, 376
- Handbook of Crystallography for Electron Microscopists and Others, **5**, 641
- Heterochrony in Evolution. A Multidisciplinary Approach, **5**, 646
- Heterochrony. The Evolution of Ontogeny, **5**, 646
- An Introduction to Applied Geostatistics, **1**, 125
- Introduction to Modeling of Transport Phenomena in Porous Media, **3**, 373
- Introduction to Optical Mineralogy, 2nd ed., **2**, 253
- Introduction to Remote Sensing, **4**, 509
- Introduction to the Physics of the Earth's Interior, **5**, 652
- Koobi Fora Research Project. Volume 3. The Fossil Ungulates: Geology, Fossil Artiodactyls, and Palaeoenvironments, **5**, 650
- Lacustrine Facies Analysis, **6**, 798
- Leaving Eden. To Protect and Manage the Earth, **5**, 650
- Living Ice. Understanding Glaciers and Glaciation, **3**, 376
- Mineral Reference Manual, **1**, 125
- Mixed Carbonate–Siliciclastic Sequences, **5**, 642
- Neotectonics and Resources, **4**, 510
- Nuclear Methods of Dating, **2**, 252
- Oceanic Basalts, **4**, 508
- Origin, Evolution, and Modern Aspects of Biomineralization in Plants and Animals, **5**, 653
- Phase Diagrams of the Elements, **5**, 645
- Pleistocene Palaeoecology of Central Norfolk. A Study of Environments Through Time, **3**, 375
- Precambrian Geology. The Dynamic Evolution of the Continental Crust, **5**, 649
- Principles of Sedimentary Basin Analysis, 2nd ed., **2**, 252
- Principles of Stratigraphic Analysis, **3**, 375
- Quaternary Landscapes, **5**, 651
- Remote Sensing Geology, **6**, 794
- Remote Sensing in Hydrology, **5**, 645
- Sea Levels, Land levels, and Tide Gauges, **6**, 796
- Source and Sediment. A Case Study of Provenance and Mass Balance at an Active Plate Margin (Calabria, Southern Italy), **6**, 793
- Temperate Palaeohydrology. Fluvial Processes in the Temperate Zone During the Last 15000 Years, **6**, 797
- Theoretical Geomorphology, 3rd ed., **5**, 644
- To Interpret the Earth. Ten Ways to be Wrong, **3**, 377
- Transmission Electron Microscopy of Minerals and Rocks, **5**, 652
- Vertebrate Palaeontology. Biology and Evolution, **5**, 647
- Volcanoes of the Central Andes, **2**, 253
- World Geomorphology, **1**, 126

PUBLICATIONS RECEIVED

Lists appear beginning pages **1**, 127; **2**, 255; **3**, 383; **4**, 511; **5**, 655; **6**, 799

NOTICES

Notices from the International Commission on Zoological Nomenclature occur on pages **3**, 382; **4**, 506

NOTES FOR CONTRIBUTORS

Contributions for publication should be addressed to The Editors, *Geological Magazine*, Department of Earth Sciences, Downing Street, Cambridge CB2 3EQ, England, or may be submitted through a member of the Editorial Advisory Board (addresses inside front cover). Rapid Communications should be clearly marked as such on the envelope. Submission implies that the manuscript has not been published previously nor currently submitted for publication elsewhere.

All contributions, whether articles, correspondence or reviews, must be sent in triplicate and typed on one side of the paper, with wide margins and double-line spacing throughout. Any minor corrections should be made neatly in the typescript, leaving the margins clear. Contributions should follow the general style of papers in recent issues of the *Magazine*. The author is invited to nominate up to five possible referees, who will not necessarily be used.

Articles must be accompanied by a brief, informative rather than indicative, abstract. Headings should be set out clearly but not underlined. Primary headings should be in lower case, at margin, with arabic numeral; subheadings should be numbered 2.a., 2.b., etc., and tertiary headings 2.a.1., 2.a.2. No cross-references should be given by page number, but 'above' and 'below' should be used with the section specified, e.g. Section 2.a.2. The SI system of units should be used. The author should mark in the margin of the manuscript where figures and tables may be inserted. References to points in larger works should, where possible, quote the page reference, e.g. Ager, 1981, p. 102. Authors alone are responsible for the correctness of their references.

Rapid Communications should follow the style of articles and must be no more than four printed pages of the *Magazine* (approximately 5000 word-equivalents) including an abstract of no more than 100 words. These contributions will be dealt with by a streamlined schedule and should appear within six months from receipt. To meet this schedule, authors will be required to make revisions with minimal delay.

Discussions of papers which have already appeared in the *Magazine* are welcomed, subject to the four-page limit.

Tables should be typed with double-line spacing on sheets separate from the running text. Each table must have a caption that will make the data in the table intelligible without reference to the text.

Illustrations should be submitted at $1\frac{1}{2} \times$ size to be published. The Author's name and figure number should be clearly marked on the

back of each piece of artwork. Figures will preferably be either single column (80mm) or double column (169mm) width when printed. The height of figure can vary in either width up to full print area height (240 mm). Illustrations should have **scale bars**, not $\times 40$. Redrafting may be required by the editors if major savings in print area can be achieved without loss of information. **Detailed maps** or **multiple logs** may well require a whole page and the size of the lettering should match the necessary reduction. Where necessary break a figure into two facing pages; **folding figures** will not be accepted. **Landscape figures** should have no lettering upside down on the final printed page. Avoid where possible gross disparities in lettering size on the drawing. **See figure below for optimum size of original and final lettering size.** Boxes of **ornament** should be explained within the figure, not in the caption. Figures composed of **photographs** should be glossy prints presented at publication scale. Each component part should be named with a lower-case letter and given a scale bar. Photographic artwork is numbered as part of the sequence of figures, not as separate plates. The *Magazine* will be able to publish a limited number of free **colour plates** each year; the editors will decide which plates to accept on their scientific merit. Authors submitting colour plates are asked to give detailed reasons why colour is necessary. Duplicates of illustrations should be sent, and may be prints or, preferably, photocopies reduced to final size. Figure captions must be typed with double-line spacing on sheets separate from the running text.

References must be double-spaced and spelt out in full, e.g.

BROOKS, M. & JAMES, D. G. 1975. The geological results of seismic refraction surveys in the Bristol Channel, 1970-73. *Journal of the Geological Society* **131**, 163-82.

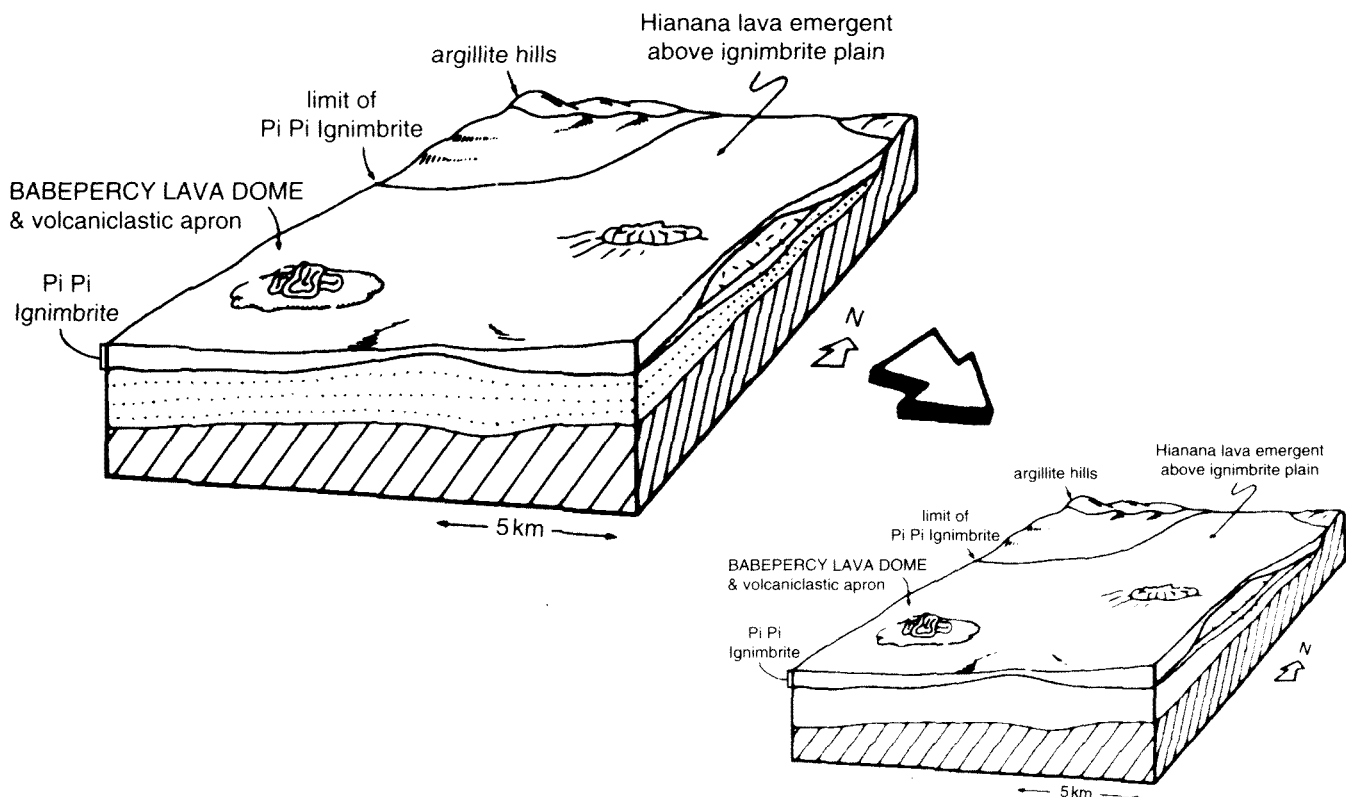
Books should be cited as:

AGER, D. V. 1981. *The Nature of the Stratigraphical Record*, 2nd ed. London: Macmillan, 122 pp.

BOTT, M. H. P. 1973. The evolution of the Atlantic north of the Faroe Islands. In *Implications of Continental Drift to the Earth Sciences*, vol. 1 (eds D. H. Tarling and S. N. Runcorn), pp. 175-89. London, New York: Academic Press.

Unpublished work should normally be referred to in the text in parentheses as, for example, 'private communication' or 'unpub. Ph.D. thesis, Univ. London, 1988', and not included in the reference list unless in the press.

Fifty offprints of each paper will be provided free of charge. Additional offprints may be purchased according to a set scale of charges if ordered when the proofs are returned.



Geological Magazine

CONTENTS

- Morphological, structural and textural variations in the the 1988–1990 andesite lava of Lonquimay Volcano, Chile
 NARANJO, J. A., SPARKS, R. S. J., STASIUK, M. V., MORENO, H. & ABLAY, G. J. 657–678
- The Ny Friesland Orogen, Spitsbergen
 HARLAND, W. B., SCOTT, R. A., AUCKLAND, K. A. & SNAPE, I. 679–708
- Chronometric calibration of mid-Ordovician to Tournaisian conodont zones: a compilation from recent graphic-correlation and isotope studies
 FORDHAM, B. G. 709–721
- Chemistry and petrological evolution of the Lastarria volcanic complex in the north Chilean Andes
 NARANJO, J. A. 723–740
- A new record of the early Silurian land plant spores from the Paraná Basin, Paraguay (Malvinokaffric Realm)
 GRAY, J., BOUCOT, A. J., GRAHN, Y. & HIMES, G. 741–752
- Coal–magma interaction: an integrated model for the emplacement of cylindrical intrusions
 KENT, R. W., GHOSE, N. C., PAUL, P. R., HASSAN, M. J. & SAUNDERS, A. D. 753–762
- Cretaceous ammonites from Fuerteventura, Canary Islands
 RENZ, O., BERNOULLI, D. & HOTTINGER, L. 763–769
- Marine molluscan constraints on the age of Cretaceous fossil forests of Alexander Island, Antarctica
 KELLY, S. R. A. & MONCRIEFF, A. C. M. 771–778
- Two new graptolites from the early Silurian (Llandovery: Aeronian) of central Wales: an origin for monoclimal thecal morphology
 ZALASIEWICZ, J. A. 779–785
- RAPID COMMUNICATION**
- The relative stratigraphic position of the foraminiferal and belemnite standards for the Campanian–Maastrichtian boundary
 HANCOCK, J. M., RUSSELL, E. E., TAYLOR, R. H. & GALE, A. S. 787–792
- REVIEWS** 793–798
- PUBLICATIONS RECEIVED** 799–800