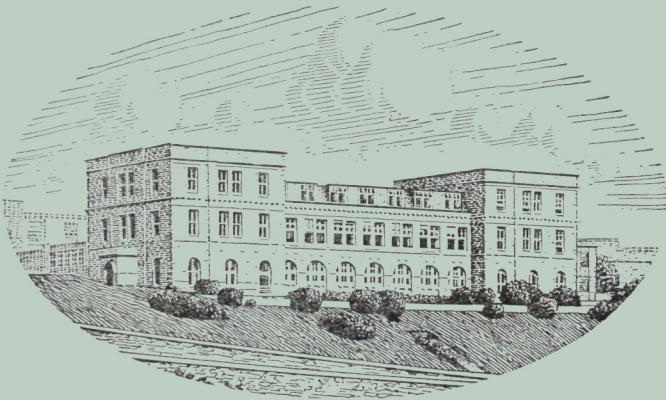


JOURNAL OF THE
MARINE BIOLOGICAL ASSOCIATION
OF THE UNITED KINGDOM



THE PLYMOUTH LABORATORY

VOLUME 47, No. 1

CAMBRIDGE
AT THE UNIVERSITY PRESS

1967

Price £5 net

(U.S.A. \$16.75)

Annual Subscription for Volume (of three parts); £14 (U.S.A. \$47.00)

MARINE BIOLOGICAL ASSOCIATION OF THE UNITED KINGDOM

PATRON

H.R.H. THE PRINCE PHILIP DUKE OF EDINBURGH, F.R.S.

OFFICERS AND COUNCIL

President: Prof. A. L. HODGKIN, Sc.D., F.R.S.

Vice-Presidents

The Earl of IVEAGH, K.G., C.B., C.M.G., F.R.S. Prof. Sir JAMES GRAY, Kt., C.B.E., M.C., Sc.D.,
LL.D., F.R.S.
Prof. A. V. HILL, C.H., O.B.E., Sc.D., LL.D.,
F.R.S. G. M. GRAHAM, C.M.G., O.B.E.
Sir EDWARD J. SALISBURY, Kt., C.B.E., D.Sc.,
LL.D., F.R.S. Prof. Sir ALISTER C. HARDY, Kt., D.Sc., F.R.S.
Major E. G. CHRISTIE-MILLER C. M. YONGE, C.B.E., D.Sc., F.R.S.
Rear Admiral Sir EDMUND G. IRVING, K.B.E., C.B.

Honorary Members

Dr H. B. BIGELOW Dr A. G. HUNTSMAN
Prof. Sir JAMES GRAY, Kt., C.B.E., M.C., Sc.D.,
LL.D., F.R.S. Dr A. C. REDFIELD
Prof. Sir ALISTER C. HARDY, Kt., D.Sc., F.R.S. Prof. G. THORSON, D.Phil.
E. H. E. HAVELOCK, C.B., C.B.E. C. M. YONGE, C.B.E., D.Sc., F.R.S.
Prof. L. A. ZENKEVITCH

COUNCIL

Elected Members

Prof. D. J. CRISP, Ph.D. Rear Admiral Sir EDMUND G. IRVING, K.B.E., C.B.
G. E. R. DEACON, C.B.E., D.Sc., F.R.S. Prof. E. W. KNIGHT-JONES, Ph.D.
Prof. J. M. DODD, Ph.D. Prof. O. E. LOWENSTEIN, D.Sc., F.R.S.
Prof. G. E. FOGG, Ph.D., F.R.S. C. E. LUCAS, C.M.G., D.Sc., F.R.S.
F. C. FRASER, C.B.E., D.Sc., F.R.S. J. W. LUND, D.Sc., F.R.S.
R. S. GLOVER C. M. YONGE, C.B.E., D.Sc., F.R.S.
Prof. Sir. JAMES GRAY, Kt., C.B.E.
M.C., Sc.D., LL.D., F.R.S.

Governors

W. C. TAME (Ministry of Agriculture, Fisheries
and Food) S. SMITH, Ph.D. (Cambridge University)
The Worshipful Company of Fishmongers: EDWARD HINDLE, Sc.D., F.R.S. (British
Association)
Sir EDWARD CHADWYCK-HEALEY, Bt., M.C. Prof. G. P. WELLS, Sc.D., F.R.S. (Zoological
Society)
Col. Sir JOHN G. CAREW POLE, Bt., D.S.O., T.D. Prof. B. KATZ, M.D., D.Sc., F.R.S. (Royal Society)
The Hon. HUGH WALDORF ASTOR, J.P. Prof. A. V. HILL, C.H., O.B.E., Sc.D., LL.D., F.R.S.
Prof. Sir ALISTER C. HARDY, Kt., D.Sc., F.R.S. (Physiological Society)
(Oxford University)

Hon. Treasurer: Sir EDWARD CHADWYCK-HEALEY, Bt., M.C., The Mill House,
Hook, Basingstoke, Hants.

Secretary: J. E. SMITH, Sc.D., F.R.S., The Laboratory, Citadel Hill, Plymouth, Devon

SCIENTIFIC STAFF

Director: J. E. SMITH, Sc.D., F.I.Biol., F.R.S.

D. P. WILSON, D.Sc., F.I.Biol., F.R.P.S. (*Zoologist*) F. A. J. ARMSTRONG, F.R.I.C. (*Chemist*)
L. H. N. COOPER, D.Sc., F.R.I.C., F.G.S., F.I.Biol.,
F.R.S. (*Chemist*) E. D. S. CORNER, M.Sc., Ph.D. (*Biochemist*)
G. M. SPOONER, M.B.E., M.A., F.R.E.S. (*Zoologist*) A. J. SOUTHWARD, D.Sc., Ph.D. (*Zoologist*)
MARY W. PARKE, D.Sc., Ph.D., F.L.S., F.I.Biol.
(*Botanist*) J. V. HOWARTH, B.Sc. (*Physiologist*)
P. G. CORBIN, B.A. (*Zoologist*) Q. BONE, M.A., D.Phil. (*Zoologist*)
J. A. C. NICOL, D.Sc., M.A., D.Phil. (*Experimental*
Zoologist) G. T. BOALCH, B.Sc., Ph.D. (*Botanist*)
N. A. HOLME, M.A. (*Zoologist*) G. W. BRYAN, B.Sc., Ph.D. (*Zoologist*)
G. R. FORSTER, B.Sc. (*Zoologist*) A. G. DAVIES, B.Sc., Ph.D. (*Physical Chemist*)
P. E. GIBBS, B.Sc., M.A. (*Zoologist*)
P. R. DANDO, B.Sc. (*Special appointment, Biochemist*)

J. H. WICKSTEAD, D.Sc., Ph.D., Ministry of Overseas Development (*Zoologist*)

Prof. E. J. DENTON, Sc.D., B.A., B.Sc., Ph.D., F.I.Biol., F.R.S. (*Physiologist*),

Royal Society Research Professor of Bristol University

JOURNAL OF THE MARINE BIOLOGICAL ASSOCIATION
INSTRUCTIONS FOR THE PREPARATION
OF MANUSCRIPTS

TITLE

The title of the paper should be kept as short as possible.

The name of the author at the beginning of the paper should be followed only by senior qualifications.

TEXT

Manuscripts must be typed (double-spaced) on one side of the paper, leaving ample margins, with the folios numbered. Words to be printed in italic should be underlined. The first mention of Latin names of species should be followed by the authority, except where reference is made to a work in which the authority appears (e.g. *Plymouth Marine Fauna*).

Manuscripts should be as concise as possible. Undue length will undoubtedly lead to delay in publication as the paper will be returned to the author for shortening.

All linear measurements and weights should be in the metric scale.

For symbols and abbreviations, the recommendations of the Royal Society (1951) are followed.

TABLES

Tables should be set out on separate sheets numbered in Arabic numerals, and given a concise heading.

TEXT-FIGURES

Text-figures should be in black ink. It is important to make the lines sufficiently black. Areas to be mechanically stippled should be indicated by light-blue pencil shading.

No drawing should be so large that it must be reduced to less than one-third of its original size. The degree of reduction need not be inserted by the author.

The size of the printed area of the *Journal* page is 18 × 12 cm. The maximum size for a full-page figure (with legend) is 19½ × 13½ cm.

Lettering, numerals, etc., should be marked clearly in blue pencil and indicating the position in which they are to be inserted by an arrow in blue pencil. This should be kept to a workable minimum, all details being included in the legend.

Axes and graduation marks on graphs must be inked in. The lines on graph paper

are not normally reproduced, and should be blue or faint grey.

Legends for figures must be typed all together on a separate sheet, and not inserted on the actual illustrations.

Text-figures are numbered in arabic numerals, and referred to in the text as 'Fig. 1', etc. Where there is a plate containing several figures, the text-figures are referred to as 'Text-fig. 1', etc.

All line-drawings are printed as text-figures, as well as photographs for which fine detail is not required.

PLATES

Photographs should be on smooth-surfaced paper, semi-matt or glossy. The edges of the photograph must be trimmed square. It is important that the background in the photograph be of a uniform tone and free from blemishes. Where several photographs make up a single plate, they are numbered 'Fig. 1', etc.

SUMMARY

Each paper must be accompanied by an informative Summary, giving the main results of the work published.

REFERENCES

References are listed alphabetically at the end of the paper. The full title of the paper must be given. Titles of papers, but not of books, are decapitalized. Titles of Journals are abbreviated as in the *World List of Scientific Publications* (4th ed., 1963 on). Volume (Vol.), Band (Bd.), or Tome (T.) numbers are in Arabic numerals. Where a volume appears in parts the part need only be specified where each has separate pagination. References to books should include the publisher. Citations in text to be given by author's name followed by date in brackets.

Examples:

MARSHALL, S. M., NICHOLLS, A. G. & ORR, A. P., 1939. On the growth and feeding of young herring in the Clyde. *J. mar. biol. Ass. U.K.*, Vol. 23, pp. 427-55.

RUSSELL, F. S. & YONGE, C. M., 1928. *The Seas*. 379 pp. London: Frederick Warne.

Authors are requested to see that their manuscripts are in finished form and completely ready for publication so that corrections may be reduced to a minimum, and these are confined as far as possible to the first proof. If the cost for corrections exceeds a reasonable figure, the author is liable to be charged to the full extent of the excess.

The Journal of General Microbiology

Editors: B. C. J. G. KNIGHT and A. F. B. STANDFAST

Contents of Volume 46, No. 1, January 1967

- J. W. Stevenson and S. T. Cowan.** Obituary notice, E. G. D. Murray, 1890–1964.
- R. Fuller and J. H. Moore.** The inhibition of the growth of *Clostridium welchii* by lipids isolated from the contents of the small intestine of the pig.
- Pauline A. Miller and A. M. Pappenheimer, Jr.** Observations on the Weissensee G strain of *Corynebacterium diphtheriae*.
- W. O. K. Grabow and J. A. Smit.** Methionine synthesis in *Proteus mirabilis*.
- J. Inselburg and M. Sussman.** Incorporation of ³H-uridine into RNA during cellular slime mould development.
- R. C. Lawrence.** The metabolism of triglycerides by spores of *Penicillium roqueforti*.
- Pamela Riches, A. Rothwell and D. W. Russell.** The spore-surface depsipeptide of *Pithomyces sacchari*.
- M. H. Richmond.** Associated diploids involving penicillinase plasmids in *Staphylococcus aureus*.
- J. D. Anderson and F. A. Dark.** Studies on the effects of aerosolization on the rates of efflux of ions from populations of *Escherichia coli* strain B.
- June D. Almeida and A. P. Waterson.** Some observations on the envelope of an influenza virus.
- P. Draper.** The aliphatic acylamide amidohydrolase of *Mycobacterium smegmatis*: its inducible nature and relation to acyl-transfer to hydroxylamine.
- L. E. Brownlie and F. H. Grau.** Effect of food intake on growth and survival of salmonellas and *Escherichia coli* in the bovine rumen.
- T. C. Chambers, Katalin Markus and L. G. Willoughby.** The fine structure of the mature zoosporangium of *Nowakowskiella profusa*.
- A. W. Bernheimer and Phyllis Grushoff.** Cereolysin: production, purification and partial characterization.
- S. T. Williams.** Sensitivity of streptomycetes to antibiotics as a taxonomic character.

The subscription price is £5 net per volume of 3 parts, single parts 45s. each, plus postage. Four volumes will be issued each year. Orders should be sent to

CAMBRIDGE UNIVERSITY PRESS
BENTLEY HOUSE, 200 EUSTON ROAD, LONDON, N.W. 1

THE JOURNAL OF ECOLOGY

EDITOR: P. GREIG-SMITH

VOL. 54, No. 3

NOVEMBER 1966

- K. W. Stewart and H. E. Schlichting, Jr. Dispersal of algae and protozoa by selected aquatic insects.
- M. J. Chadwick and Mohammed Obeid. A comparative study of the growth of *Eichhornia crassipes* Solms. and *Pistia stratiotes* L. in water-culture.
- S. B. Boaler and K. C. Sciwale. Ecology of a miombo site, Lupa North Forest Reserve, Tanzania. III. Effects on the vegetation of local cultivation practices.
- M. H. Dean. A survey of the uranium content of vegetation in Great Britain.
- K. Loach. Relations between soil nutrients and vegetation in wet-heaths.
- F. E. Round and J. W. Eaton. Persistent, vertical-migration rhythms in benthic microflora. III. The rhythm of epipelic algae in a freshwater pond.
- A. J. P. Gore and C. Urquhart. The effects of waterlogging on the growth of *Molinia caerulea* and *Eriophorum vaginatum*.
- J. M. Lambert and W. T. Williams. Multivariate methods in plant ecology. VI. Comparison of information-analysis and association-analysis.
- P. Bannister. The use of subjective estimates of cover-abundance as the basis for ordination.
- N. Gilbert and T. C. E. Wells. Analysis of quadrat data.
- Brian Hopkins. Vegetation of the Olokemiji Forest Reserve, Nigeria. IV. The litter and soil with special reference to their seasonal changes.
- H. F. Heady. Influence of grazing on the composition of *Themeda triandra* grassland, East Africa.
- R. M. M. Crawford and D. Wishart. A multivariate analysis of the development of dune slack vegetation in relation to coastal accretion at Tentsmuir, Fife.
- D. F. Westlake. The biomass and productivity of *Glyceria maxima*. I. Seasonal changes in biomass.
- P. B. Nicholson, K. L. Bocock and O. W. Heal. Studies on the decomposition of the faecal pellets of a millipede (*Glomeris marginata* (Villers)).
- J. Jenik and J. B. Hall. The ecological effects of the harmattan wind in the Djebobo Massif (Togo Mountains, Ghana).
- D. J. Anderson, R. C. Cooke, T. T. Elkington and D. J. Read. Studies on structure in plant communities. II. The structure of some dwarf-heath and birch-copse communities in Skjaldfannardalur, North-west Iceland.
- BIOLOGICAL FLORA OF THE BRITISH ISLES
P. Bannister. *Erica tetralix* L.
J. Timson. *Polygonum hydropiper* L.
P. D. Coker. *Sibbaldia procumbens* L.

Subscription price £9. 9s. per volume of three parts (single parts 70s. each)

BLACKWELL SCIENTIFIC PUBLICATIONS LTD.

5 ALFRED STREET • OXFORD

THE JOURNAL OF ANIMAL ECOLOGY

EDITORS: O. W. RICHARDS and K. H. MANN

VOL. 36, No. 1

FEBRUARY 1967

- Monte Lloyd. 'Mean crowding'.
- L. Vlijm and Annette M. Kessler-Geschiere. The phenology and habitat of *Pardosa monticola*, *P. nigriceps* and *P. pullata* (Araneae, Lycosidae).
- L. M. Cook, L. P. Brower and H. J. Croze. The accuracy of a population estimation from multiple recapture data.
- Mary J. Burgis. A quantitative study of reproduction in some species of *Ceriodaphnia* (Crustacea: Cladocera).
- J. A. Bishop. Seasonal occurrence of a branchiopod crustacean, *Limnadia stanleyana* King (Conchostraca) in eastern Australia.
- David Jenkins, Adam Watson and G. R. Miller. Population fluctuations in the red grouse *Lagopus lagopus scoticus*.
- B. E. Freeman. Studies on the ecology of larval Tipulinae (Diptera, Tipulidae).
- J. S. Kennedy and Lorna Crawley. Spaced-out gregariousness in sycamore aphids *Drepanosiphum platanoides* (Schränk) (Hemiptera, Callaphididae).
- Barundeb Banerjee. Seasonal changes in the distribution of the millipede *Cylindroiulus punctatus* (Leach) in decaying logs and soil.
- P. S. Maitland and Margaret M. Penney. The ecology of the Simuliidae in a Scottish river.
- M. J. Largen. The influence of water temperature upon the life of the dog-whelek *Thais lapillus* (Gastropoda: Prosobranchia).
- R. N. Gibson. Studies on the movements of littoral fish.
- B. M. Gerard. Factors affecting earthworms in pastures.
- Reviews.

Subscription price £8 per volume of three parts (single parts 60s. each)

BLACKWELL SCIENTIFIC PUBLICATIONS LTD.

5 ALFRED STREET • OXFORD

PROCEEDINGS OF THE MALACOLOGICAL SOCIETY OF LONDON

Vol. 37, Part 3, December 1966

£1. 5s. net, or \$4 U.S.

CONTENTS

Dr L. R. Cox, 1897-1965

Jeannette Whipple Struhsaker. Breeding, spawning, spawning periodicity and early development in the Hawaiian *Littorina*: *L. pintado* (Wood), *L. picta* Philippi and *L. scabra* (Linné).

James Murray. *Cepaea nemoralis* in the Isles of Scilly.

David J. Bradley. Radiography for the malacologist.

Jenifer M. Plummer. Collagen formation in Achatinidae associated with a specific cell type.

R. H. Nisbet and Jenifer M. Plummer. Further studies on the fine structure of the heart of Achatinidae.

Annual subscription (three parts) 60s. (\$10) post free.

BLACKWELL SCIENTIFIC PUBLICATIONS LTD.

5 Alfred St., Oxford

Journal of CELL SCIENCE

Formerly The Quarterly Journal of Microscopical Science

The *Journal of Cell Science* is devoted to all aspects of the study of cells. The scope of the journal is wide, and papers dealing with the entire range of investigations of cell organization, including accounts of advances in the relevant techniques, will be acceptable. Thus, in addition to studies of the structure and functions of plant and animal cells and their extra-cellular products (for example, cell walls, cuticles), papers will be published on such topics as cell growth and division, cell movements and interactions, and cell genetics. Contributions concerned with aspects of morphogenesis at the cellular and subcellular levels will also be acceptable. Studies of the organization of micro-organisms will be welcomed, as will papers dealing with the study of viruses, in so far as they are relevant to an understanding of cell organization (for example, those dealing with cell virus interactions). Cytochemical papers will be acceptable, but histochemical work, in which the emphasis is on the localization of substances at the tissue level, will not ordinarily be included. Occasional review articles will be published.

Subscriptions: £8 per volume of 4 parts, post free; single parts 50s. postage extra. Copies may be ordered from your bookseller, or direct from the publishers:

CAMBRIDGE UNIVERSITY PRESS, Bentley House, 200 Euston Road, London, N.W.1

THE JOURNAL OF EXPERIMENTAL BIOLOGY

Edited by SIR VINCENT WIGGLESWORTH and J. A. RAMSAY

Vol. 45, No. 3

December 1966

- Wells, M. J. and Young, J. Z. Lateral interaction and transfer in the tactile memory of the octopus.
- Chapple, William D. Motoneuron responses to visual stimuli in *Oncopeltus fasciatus* Dallas.
- Mendelson, Martin. The site of impulse initiation in bipolar receptor neurons of *Callinectes sapidus* L.
- Knights, Ann. The activity of single motor fibres in arthropods. II. The Australian Yabbie.
- Land, M. F. A multilayer interference reflector in the eye of the scallop, *Pecten maximus*.
- Hemmings, C. C. Olfaction and vision in fish schooling.
- Hemmings, C. C. The mechanism of orientation of roach, *Rutilus rutilus* L. in an odour gradient.
- Chapman, R. A. The repetitive responses of isolated axons from the crab, *Carcinus maenas*.
- Pennycook, C. J. and Parker, G. A. Structural limitations on the power output of the pigeon's flight muscles.
- Maddrell, S. H. P. The site of release of the diuretic hormone in *Rhodnius*—a new neurohaemal system in insects.

Subscription for 1967, 80s. per volume of 3 parts, 2 volumes a year. Single parts 30s. net

Orders may be placed through your bookseller or direct with the

Cambridge University Press, Bentley House, 200 Euston Road, London, N.W. 1

FULL PARTICULARS OF THE

JOURNALS

PUBLISHED BY THE

CAMBRIDGE UNIVERSITY PRESS

MAY BE HAD FROM

THE MANAGER, CAMBRIDGE UNIVERSITY PRESS

BENTLEY HOUSE, 200 EUSTON ROAD

LONDON, N.W. 1