

Three dimensional characterization of a silica hollow sphere with an iron oxide core by annular dark field scanning confocal electron microscopy

M. Takeguchi,^{*,****} M. Okuda,^{*} A. Hashimoto,^{**} K. Mitsuishi,^{***} M. Shimojo,^{****} X. Zhang,^{*****} P. Wang,^{*****} P. D. Nellist^{*****} and A. I. Kirkland^{*****}

^{*} Nano-characterization Center, National Institute for Materials Science, 3-13 Sakura, Tsukuba 305-003, Japan

^{**} International Center for Young Scientists, National Institute for Materials Science, 1-2-1 Sengen, Tsukuba 305-0047, Japan

^{***} Quantum Dot Research Center, National Institute for Materials Science, 3-13 Sakura, Tsukuba 305-003, Japan

^{****} Advanced Science Research Laboratory, Saitama Institute of Technology, 1690 Fusaiji, Fukuya, Saitama 369-0293, Japan

^{*****} Department of Materials, University of Oxford, Parks Road, OX1 3PH Oxford, UK

Scanning confocal electron microscopy (SCEM) was first implemented by N.J. Zaluzec et al. [1] and has recently become established as a three dimensional (3D) characterization tool by operating in energy filtered (EF) [2] and annular dark field (ADF) modes [3]. Since the 3D information transfer in these modes is improved compared with that of ADF-STEM and bright field (BF)-SCEM, the depth of field of not only point like objects but also laterally extended ones can be dramatically reduced [4-6]. Incoherent EF-SCEM has almost ideal 3D transfer function but inherently its signal is very small. On the other hand, although ADF-SCEM cannot be incoherent imaging and therefore its 3D transfer function is not ideal when low angle ADF electrons are collected, the depth of field of ADF-SCEM is capable of producing interpretable 3D images with sufficient signal intensity for various types of objects [6].

In the present work, we characterized 3D structure of silica hollow spheres with iron oxide cores by ADF-SCEM using an Oxford-JEOL 2200MCO equipped with aberration correctors for probe-forming and imaging lenses, pinhole, 3D stage scanning system and ADF aperture [3,7]. The sample was a rattle-type silica hollow sphere including an iron oxide (Fe_2O_3) core prepared by the template method described by Zhu et al. [8].

Elemental maps taken by energy filtering are shown in Fig.1. It is obvious that iron covers the silica surface, but internal iron distribution cannot be clearly observed. Figure 2 shows (a) HAADF-STEM image and (b,c) XY and XZ sliced images extracted from the 3D reconstruction through a computer tomography (CT) method. These were produced from a tilt-series of HAADF-STEM images from -60° to $+60^\circ$ at 2° decrements. The acquisition time of the tilt-series was about 2 hours. The internal structure is clearly seen in the XY sliced image, but it is noted that the XZ sliced image exhibits missing-angle induced artifacts.

Figure 3 shows (a) HAADF-STEM image and (b,c) XY and XZ sliced images taken by ADF-SCEM. It was found that the core was also hollow, that is consistent with the CT observation results. Thus, it is demonstrated that ADF-SCEM enables us to observe sliced images of objects at desired positions directly.

References

- [1] N. J. Zaluzec, *Microscopy- Today* 6 (2003) 8.
 [2] P. Wang et al., *Microsc. Microanal.* 15(Suppl.2) (2009) 42.
 [3] A. Hashimoto et al., *J. Appl. Phys.* 106 (2009) 086101.
 [4] H. L. Xin and D. A. Muller, *J. Electron Microsc.* 58 (2009) 157.
 [5] A. J. D'Alfonso, et al., *Ultramicroscopy* 108 (2008) 1567.
 [6] K. Mitsuishi et al., submitted.
 [7] M. Takeguchi et al., *J. Electron Microsc.* 58 (2008) 123.
 [8] Y. Zhu et al., *Chem. Mater.* 21 (2009) 2547.
 [9] A part of this research was financially supported by Grant-in-Aid for Scientific Research and Bilateral Joint Research Project (Japan-UK) of JSPS.

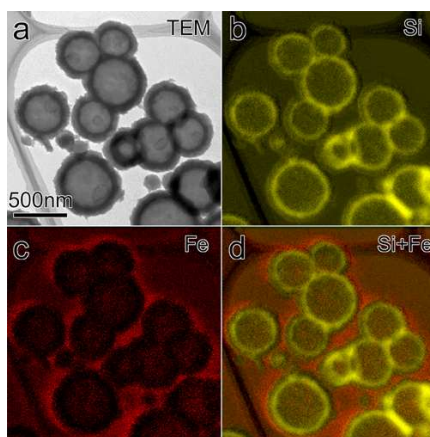


FIG.1 (a) HAADF-STEM image, (b) Si map, (c) Fe map, and (d) Si and Fe overlaid map of silica hollow spheres with iron oxide cores.

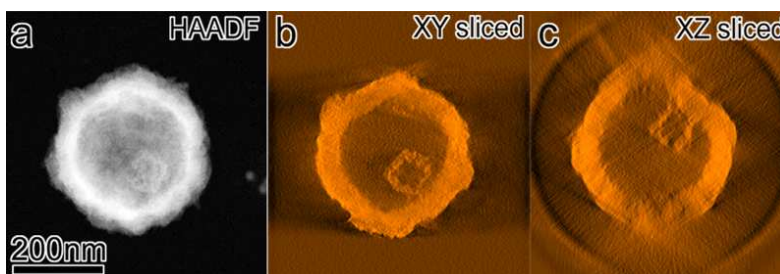


FIG.2 (a) HAADF-STEM image, and (b,c) XY and XZ sliced images extracted from TEM-CT 3D reconstruction of silica hollow spheres with iron oxide cores.

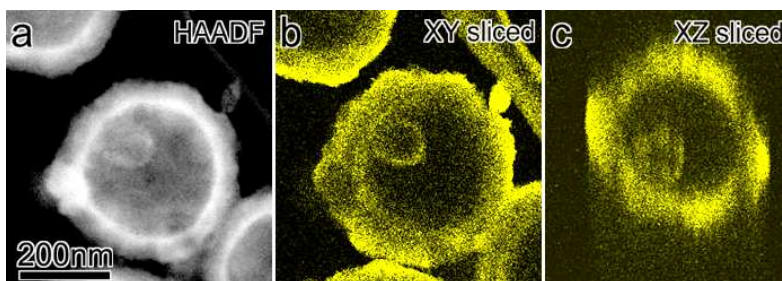


FIG.3 (a) HAADF-STEM image, (b,c) XY and XZ ADF-STEM sliced images of silica hollow spheres with iron oxide cores.