



LOOK AGAIN...

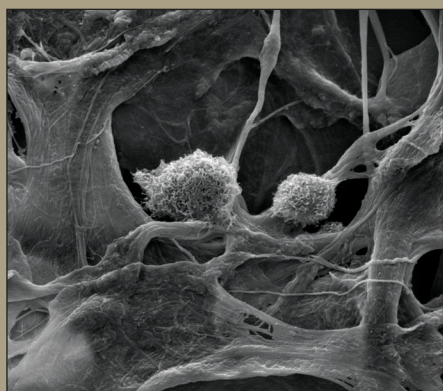
Just for Fun!

See if you can find the 8 differences in each set of images.

Fuzzy mediators

Scanning electron micrograph of two innate immune cells, called macrophages, on a scaffold made of lyophilized Type 1 collagen, cross-linked with liquid formaldehyde. Macrophage protrusion is visualized reaching for another part of the collagen scaffold.

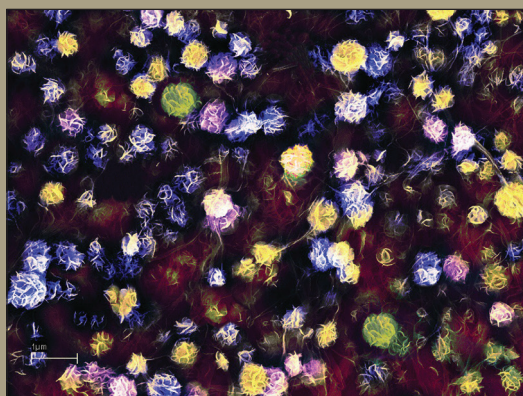
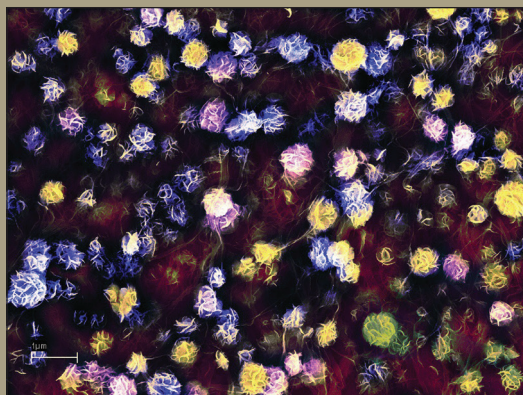
Claire E. WithereI, Drexel University, USA.



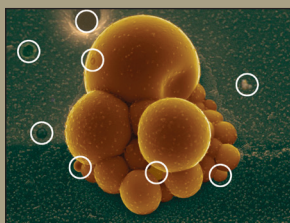
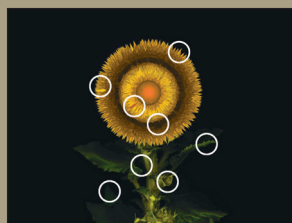
Floral clothes at the nanoscale

Colored scanning electron microscope image obtained from molybdenum sulfide nanosheets grown on carbonized bacterial cellulose nanofibers.

Md Nadim Ferdous Hoque, Texas Tech University, USA.



AUGUST 2018 answer key



Answers will be published in the December 2018 issue.

Images on the top were submitted to the Materials Research Society "Science as Art" competition. Images on the bottom were modified in Adobe Photoshop for this "Look Again" activity.