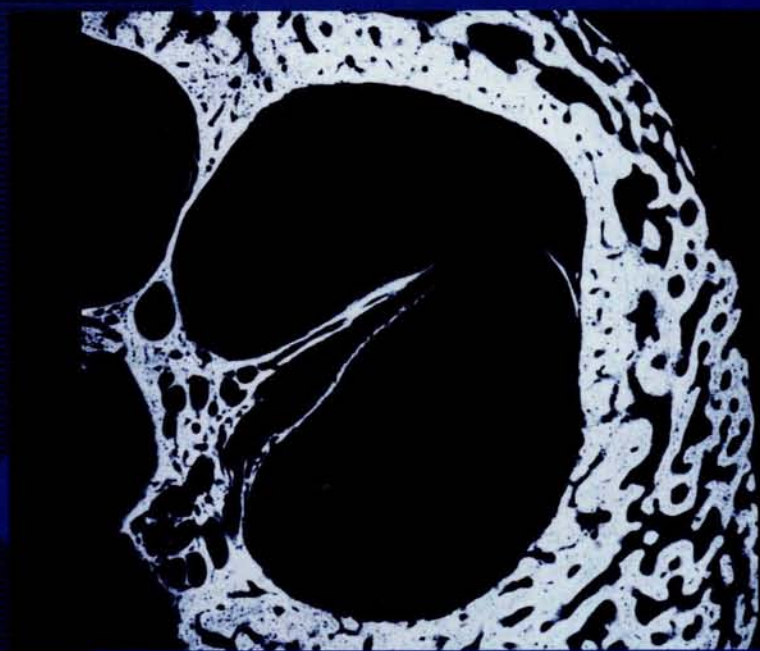


January
1997

The Journal of
**Laryngology
& Otology**

Founded in 1887
by Merrill Mackenzie & Norman Wallander



Edited by Neil Weir

Assistant Editors
Carol Wengraf,
Richard Ramsden,
David Proops,
Valerie Lund,
Henry Grant,
Andrew Jones,
Guy Kenyon,
Michael Rothera,
Martin Bailey,
Liam Flood,
Patrick Bradley,
Nick Jones &
Iain Swan

Emeritus Advisor
in Pathology
Imrich Friedmann

Advisors in Pathology
Brian Manners,
Christopher Milroy &
Lesley Smallman

Advisor in Audiology
Linda Luxon

Advisors in Radiology
Glyn Lloyd &
Peter Phelps

Advisors in Statistics
Anthony Hughes,
Peter Kelly & Janine Gray

Production Editors
Gillian Goldfarb &
Jennifer Almond

V o l

1 1 1

No 1

features:

The role of the speech and language
therapist in voice restoration after
laryngectomy

Medical examiner variability

Oliver St. John Gogarty

Effect of drinking water fluoridation
on the prevalence of otosclerosis

Malignant vagal paraganglioma

Kamplex **KC35** **Clinical Audiometer**

P.C. Werth continue the Kamplex 'K' Series with the all new **KC35** Clinical Audiometer specifically designed and manufactured for the UK.

This 'benchmark' audiometer combines the renowned Kamplex AC30 facilities with new technology and contemporary appearance, whilst fully maintaining the Kamplex ease of operation. Larger display, improved monitoring facilities, combined with easily adjustable front panel controls ensure the **KC35** will be even more popular than its predecessor.



Features include:

- Large LCD display
- Front panel level controls
- Optional free-field amplifiers
- SISI test
- TT decay test
- Threshold storage
- RS232 computer interface
- Printer output
- NOAH compatible
- Full clinical facilities
- Auto threshold
- User configuration via software

FOR A PRIORITY DEMONSTRATION, PLEASE CONTACT OUR INSTRUMENT DIVISION ON 0181-675 5157

Exclusively from
P.C.WERTH LTD

Audiology House, 45 Nightingale Lane, London SW12 8SP

Telephone: (0181) 675 5151 Fax: (0181) 675 7577



The Journal of Laryngology and Otology

(Founded in 1887 by MORELL MACKENZIE and NORRIS WOLFENDEN)

Edited by NEIL WEIR

Assistant Editors CAROL WENGRAF, RICHARD RAMSDEN, DAVID PROOPS, VALERIE LUND, HENRY GRANT, ANDREW JONES, GUY KENYON,
MICHAEL ROTHERA, MARTIN BAILEY, LIAM FLOOD, PATRICK BRADLEY, NICK JONES & IAIN SWAN

Production Editors GILLIAN GOLDFARB & JENNIFER ALMOND

INSTRUCTIONS FOR AUTHORS

1. Original articles which have not been published elsewhere are invited and should be sent to the Editor. They are considered for publication on the understanding that they are contributed to this *Journal* solely. Reproduction elsewhere in whole or in part, is not permitted without the previous written consent of the Author and Editor and the customary acknowledgement must be made. Normally an original main article should not exceed 7500 words.

Longer articles or theses will be considered for publication as *Supplements*, at the expense of the authors or their employing authorities.

2. Manuscripts should be **typewritten in duplicate** on one side of the paper only (A4 297 x 210 mm) and double spaced, with wide margins.

Begin each component on a new page in the following sequence: title page, abstract, text, acknowledgements, references, tables and legends.

(a) **Title page**—Titles should be short with names of the authors, higher degrees only. Details of the departments in which the authors work should be put lower down. An address for correspondence should be supplied together with the author who should receive this; this will ultimately appear beneath the list of references. Any change of address should be notified. If the paper was presented at a meeting, the details of this must be given and will be inserted at the bottom of the first page of printed script.

(b) **Abstract**—This should contain not more than 150 words and include a statement of the problem, the method of study, results and conclusions; a 'summary' section should **not** be included in the main manuscript. **No paper will be accepted without an abstract.**

(c) **Key Words**—Only those appearing as Medical Subject Headings (MeSH) in the supplement to the Index Medicus may be used; where no appropriate word(s) are listed those dictated by common sense/usage should be supplied.

(d) **Text**—Suggested outline—(1) introduction, (2) materials and methods, (3) results, (4) discussion, (5) conclusion.

(e) **Tables** are adjuncts to the text and should not repeat material already presented.

(f) **Illustrations**—Two sets of illustrations, one with each copy of the manuscript, must be submitted and all authors should remember that the single column width is 80mm. One set of illustrations should, therefore, not exceed this width and they should ensure that the essential features are illustrated within this dimension.

Coloured illustrations will be charged to authors, unless a special grant is authorized by the Editor.

Written permission from the publisher must be provided to the *Journal* in order to republish material with copyright elsewhere and also from the senior author where necessary. Consent to be obtained from a patient if a photograph of their face is to be reproduced.

(g) **Measurements** must be in metric units, with *Système Internationale* (SI) equivalents given in parentheses.

(h) **References**—For *Journal* articles, The Harvard system of recording references should be used, e.g. Green, C. and Brown, D. (1951) The tonsil problem. *Journal of Laryngology and Otology* 65: 33–38. A paper written by more than two authors should be abbreviated in the text, e.g. Green *et al.* (1951), but *all* the authors should be given in the list of references. The titles of all *Journals* should be given without abbreviation. **References should be listed in alphabetical order**; use of the Vancouver system will **not** be accepted.

For single-author books, the following style should be used: Green, C. (1951) *The tonsil problem*, 2nd Edition. vol. 1, Headley Brothers Ltd., Ashford, Kent, pp 33–38.

For papers in multi-books with one or more editors, the reference should include the title of the chapter and the names of the editors, together with the number of the edition as e.g. Brown, D. (1951) Examination of the ear. In *Diseases of the Ear, Nose and Throat*. 2nd Edition. (White, A., Black, B., eds.), Headley Brothers Ltd., Ashford, Kent, pp 33–38.

It is most important that authors should verify personally the accuracy of every reference before submitting a paper for publication. The names of authors cited in the References should be given in alphabetical order.

(i) **Drugs**—The proper names of drugs must be used. One reference can be made to the brand name if it is felt to be important to the study.

(j) **Financial disclosures**—In the submission letter to the Editor, the authors must list all affiliations with or financial involvement in, organizations or entities with a direct financial interest in the subject matter or material of the research discussed in the manuscript.

(k) **Declaration**. Each manuscript must be accompanied by a letter of declaration to be signed by each author to confirm that they have seen, read and approve the contribution bearing their name.

(l) **Rejections**—All manuscripts which are rejected will no longer be returned to the authors. Those submitting papers should, therefore, ensure that they retain at least one copy and the reference numbers, if any, of the illustrations. The only exception to this will be those manuscripts with colour illustrations which will be returned *automatically* by Surface Mail.

(m) **Facsimile (FAX)**—All authors should send a Facsimile number whenever possible to speed communication; this particularly applies to those outside the United Kingdom. Manuscripts with no visual illustrations (X-rays/pathology) may be sent by facsimile.

3. Page proofs are sent to authors for corrections, which should be kept to a minimum; they must be clearly marked, and no extra matter added. Proofs should be returned within 5 days.

4. Orders for reprints must be sent when returning page proofs, and for this purpose special forms are supplied.

5. Editorial communications may be addressed to **The Editor, Journal of Laryngology and Otology, c/o Headley Brothers Ltd., The Invicta Press, Ashford, Kent TN24 8HH, or sent by FAX (01483 451874).**

6. **The annual subscription is £110.00 Institutions & Libraries US\$250.00; £85.00 Individuals US\$195.50; £45.00 Registrars, Residents and Interns.** (Those in training should submit a certificate from The Head of the Department giving details of their appointment; those who qualify must supply their *home* address for mailing direct). Claims to be made for missing issues within 6 months of each publication date.

7. Single copies of current or back numbers (when available) will be on sale at £12.00 each (including postage).

8. **SUPPLEMENTS** published at 'irregular' intervals with subscription, available separately on request.

9. All subscriptions, advertising and business communications should be sent to the publishers, or subscription agents.

Instructions for Occasional Articles

Review Articles. Articles of this type, preferably not exceeding 3,000 words will be considered but the author(s) are expected to be a recognized authority on the topic and have carried out work of their own in the relevant field.

Historical Articles. Articles of this type are generally encouraged, but it is obvious that they have to provide some new information or interpretation, whether it be about a well-known person or for example an instrument associated with him, but those from within a Hospital's own department who have made a hitherto less well-known contribution would be welcome.

Audit Articles. Articles should be of general audit interest—not specifically departmental. It should always be demonstrated that the 'audit cycle' has been completed.

'Silence in Court'. Articles on medicolegal topics are welcome but a preliminary letter written beforehand is requested to ensure that the contribution would be appropriate.

Short Communications. This feature will be used on an occasional basis. Examples of material suitable for inclusion under this title would be, for example, a piece of work which was of clinical interest but had failed to produce findings which were of statistical significance; where an investigative technique has been applied to an allied field, not warranting a further in-depth description of its earlier application and methodology.

Radiology in Focus. Short reports on cases in which the radiology has been crucial in the making of the diagnosis or the management of a particular case now appear on a monthly or bimonthly basis. This spot is to encourage clinicians and radiologists to produce material of particular interest in the specialty and to encourage co-operation in this field. Only presentations with first-class illustrations can be accepted and these must emphasize a problem of unusual clinical interest.

Pathology in Focus. Articles which are of pathological interest with particular emphasis on the way the diagnosis was achieved now appear on a monthly or bimonthly basis. It is hoped that clinicians will involve their pathologists in these reports, and all illustrations must be of first-class quality. Where a department, particularly those overseas, may not have such specialized facilities. It may be possible, if a block or several unstained sections are provided for our Adviser to produce or supplement the illustration submitted. Only contributions of particular pathological interest will be accepted.

Oncology in Focus. This new feature is for papers concerned with oncological treatment and investigation.

Letters to the Editor. This feature has been re-introduced to give those who wish to comment about a paper previously published within the *Journal*, an opportunity to express their views. Wherever possible, the original author is asked to add his further comment, thereby adding to the value of the contribution. Such letters should be sent as soon as possible after publication of each month's issue of the *Journal* in the hope of including them early thereafter.

'Mini-papers', such as those which appear in the *British Medical Journal*, *Lancet*, or *New England Journal of Medicine*, will not be acceptable except on the rare occasion that they bring information of immediate interest to the reader.

HEADLEY BROTHERS LTD, THE INVICTA PRESS, ASHFORD, KENT

© *Journal of Laryngology and Otology Ltd.*, 1997 ISSN 0022-2151

Periodicals Postage Paid at Rahway N.J.

Postmaster: Send address corrections to The Journal of Laryngology and Otology, c/o Mercury

Airfreight International Ltd. Inc., 2323 Randolph Avenue, Avenel, N.J. 07001. Frequency of Publication: Monthly.

WWW.
jlo.
CO.
uk

January

1997



International Workshop
Bone Anchored Hearing Aid (BAHA)

by the Department of Otorhinolaryngology,
Head and Neck Surgery of Lund

April 10 – 11, 1997

This two-day workshop will include:

- The Bone Anchored Hearing Aid
- Selection of patients
- Preoperative evaluation
- Practical training in the surgical technique
- Live surgery with participants in OR
- Patient demonstrations
- Postoperative care and follow-up
- Possible complications
- Results

Language: English

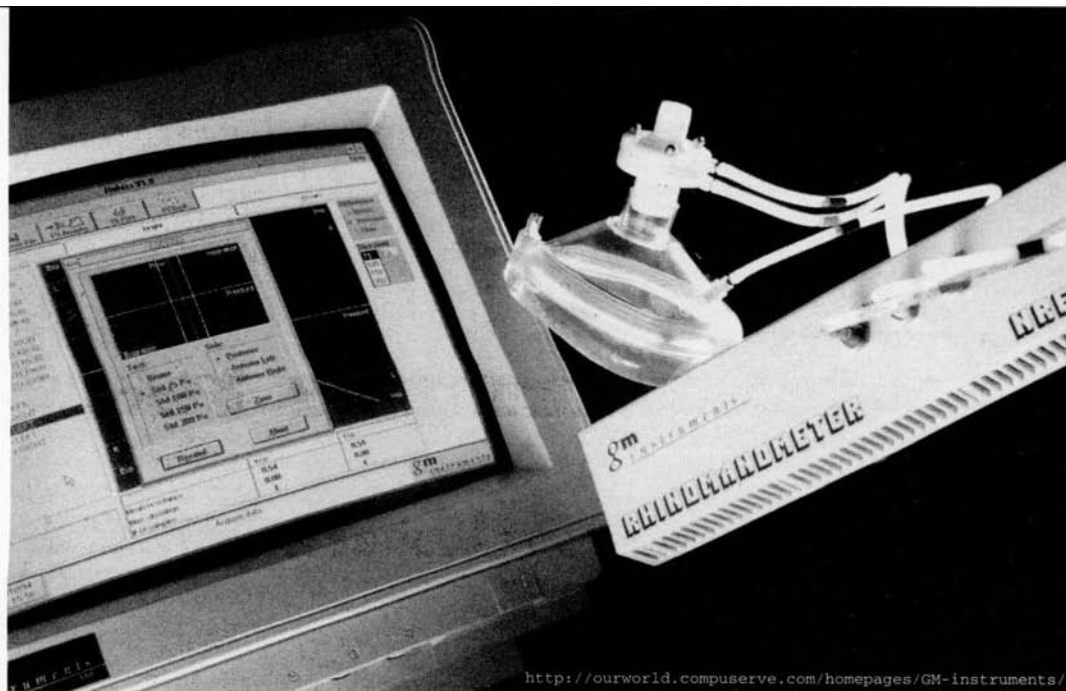
Workshop Directors:

Sten Harris, MD, PhD,
Jan Grenner, MD, PhD,
Pia Persson-Skog, audiology assistant

For further information please contact:

Hannele Andersson, Product specialist
Nobel Biocare Norden AB,
Box 5211, S-402 24 Göteborg, Sweden
Phone: +46 31 35 49 06, fax: +46 31 40 69 15,
mobile +46 0708 35 49 29

A4 0255/96.11



<http://ourworld.compuServe.com/homepages/GM-instruments/>

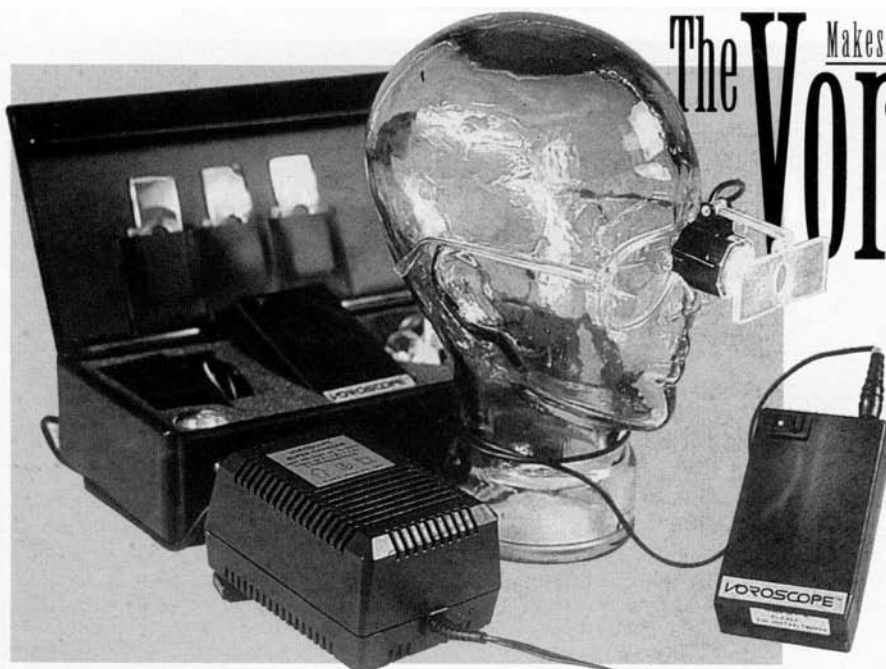
For information on the latest developments in

- ACOUSTIC RHINOMETRY
- RHINOMANOMETRY
- CALIBRATION EQUIPMENT AND ACCESSORIES

contact **Eric Greig** of **G M Instruments**

Unit 6, Ashgrove Road,
Kilwinning, KA13 6PU,
Scotland, UK
tel 01294 554664
fax 01294 551154
e-mail 100522.3225@compuserve.com

gm
i n s t r u m e n t s
Ltd



Makes light of those little problem areas

The Voroscope Coaxial

- ❖ Eye-Aligned Illumination of 12,000 LUX at only 85g.
- ❖ Belt Clip Battery and Complete Mobility.
- ❖ Continuous Usage Capability.
- ❖ Variable Magnification of X1.5, X1.75 and X2.25
- ❖ Eye Strain and Fatigue Relief.
- ❖ Low Cost and Convenience.
- ❖ Prescription Lenses if Required.

GARTH JESSAMINE HEALTH CARE

Unit 5, The Courtyard, Matthewsgreen Farm,
Matthewsgreen Road, Wokingham,
Berkshire, RG41 1JX

- ❖ Availability in Either Black or White.
- ❖ Ideal for use in Theatre, Clinic, Ward Consulting Room, Emergency and Domiciliary Call

Telephone: (01734) 786916 Fax: (01734) 774064

COMPLETE YOUR COLLECTION



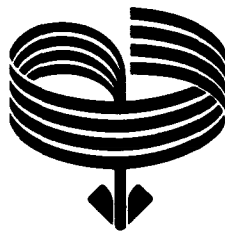
Past copies of The Journal of Laryngology and Otology are available if you wish to build a complete collection of the definitive information resource for surgeons, consultants and students.

Most issues, from 1887 to the present day are available to be ordered at £13 a copy plus postage.

To order the back issues fax +44 (01233) 612345 or write to:

Circulation Manager
Journal of Laryngology and Otology
Headley Brothers Ltd
Invicta Press
Ashford, Kent
TN24 8HH

The best in ENT...every month
The Journal of Laryngology and Otology



Brånemark System®

*“It’s simply a question
of quality of life”*

Bone Anchored Hearing Aid



BAHA Classic 300

The updated BAHA has **three main improvements**:

The first is the development of a **continuous base tone control** which has flexibility to cover the frequency response range of the four previous models.

The second improvement is the adoption of ABS plastic for the hearing aid casing which offers a more **aesthetic moulded design**, greater strength and colour stability.

THE BAHA CLASSIC 300 ALSO COMES WITH A **FIVE YEAR WARRANTY** (UK Only).

Indications for the BAHA

- **Chronic Otitis Media** - with conductive or mixed hearing loss where the use of air conduction devices is contraindicated.
- **Congenital Malformation** - of the external or middle ear where an air conduction hearing aid cannot be used or is contraindicated.
- **Otosclerosis** - in some cases.

Craniofacial Rehabilitation



...a reliably retained prosthesis

For further information contact:

Nobel Biocare U.K. Limited
Nobel House, Grand Union Office Park
Packet Boat Lane, Uxbridge UB8 2GH, England
Tel: +44 (0)1895 430650 Fax: +44 (0)1895 430636

<http://www.jlo.co.uk/jlo/nobel.htm>

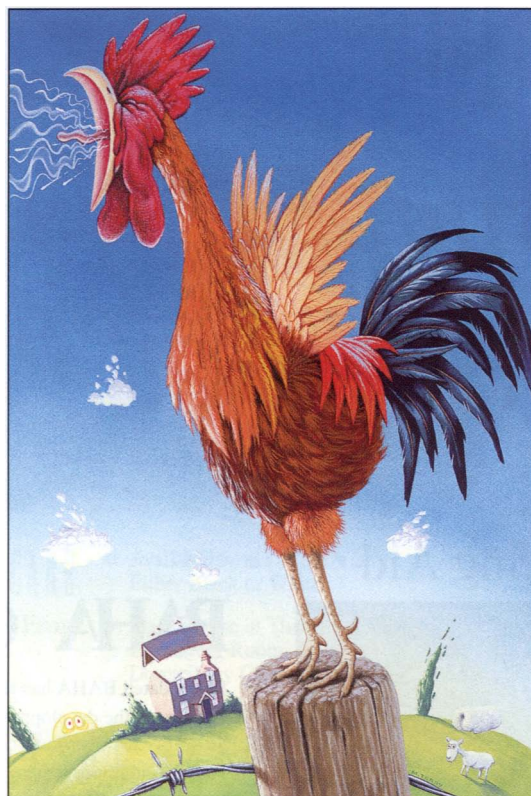
Nobel Biocare Norden AB
Box 5211, S-402 24
Gothenburg, Sweden
Tel: +46 (0) 31 35 49 00 Fax: +46 (0) 31 40 69 15

The difference is years of experience

 **Nobel Biocare**



NEUROSIGN® 100



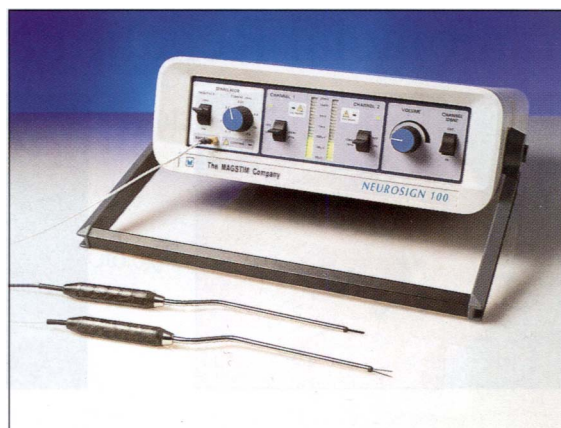
Help to Preserve that Voice using Laryngeal Nerve Monitoring

The Neurosign 100 is widely used in many countries to monitor the facial nerve during skull-base and head and neck surgery. It has helped many surgeons in their efforts to improve the outcome for patients, and as such has been a contributing factor to the statistical improvement in facial nerve preservation.

Thyroid surgery carries a small risk to injury to the recurrent laryngeal nerves, although such injury can be devastating to someone who uses their voice professionally - teachers, singers, actors, doctors! In the event of revision surgery, not uncommon in these cases after a few years, the risk is greater. Use the Neurosign 100 to help protect these nerves.

Use the Neurosign 100 to monitor the facial nerve during acoustic neuroma resection, middle ear surgery, mastoidectomy, parotidectomy and submandibular gland removal.

For further information or to arrange a demonstration, please contact your local distributor or the Company.



Neurosign® 100

THE MAGSTIM CO. LTD
Spring Gardens, Whitland,
Carmarthenshire SA34 0HR, U.K.
Phone: +44 (0) 1994 240798
Fax: +44 (0) 1994 240061

THE MAGSTIM CO. BENELUX
BC Regio Aalst, Industrielaan, 3e Indust-
riezone, 9320 Erembodegem, Belgium
Phone: +32 (0) 53 85 35 11
Fax: +32 (0) 53 83 33 82

TEKNO SURGICAL LTD
Fisherman's Wharf
Ringsend, Dublin 4
Tel: 01 6672 871
Fax: 01 6672 873

MDM MEDICAL
Office Suite 3, Homestead Farm
Stockbridge, Hampshire SO20 6LG
Tel: (01264) 811080
Fax: (01264) 811090

EDEN MEDICAL
Unit 2C, West Telferton
Edinburgh EH7 6UL
Tel: (0131) 669 8385
Fax: (0131) 657 4013.

The Journal of
Laryngology and Otology

The Journal of Laryngology and Otology

Edited by NEIL WEIR

Assistant Editors CAROL WENGRAF, RICHARD RAMSDEN, DAVID PROOPS,
VALERIE LUND, HENRY GRANT, ANDREW JONES, GUY KENYON,
MICHAEL ROTHERA, MARTIN BAILEY, LIAM FLOOD,
PATRICK BRADLEY, NICK JONES & IAIN SWAN

Emeritus Advisor in Pathology IMRICH FRIEDMANN

Advisors in Pathology BRIAN MANNERS, CHRISTOPHER MILROY
& LESLEY SMALLMAN

Advisor in Audiology LINDA LUXON

Advisors in Radiology GLYN LLOYD & PETER PHELPS

Advisors in Statistics ANTHONY HUGHES, PETER KELLY & JANINE GRAY

Production Editors GILLIAN GOLDFARB & JENNIFER ALMOND

*FOUNDED IN 1887 BY MORELL MACKENZIE
& NORRIS WOLFENDEN*

VOLUME 111

Published for the Proprietors by

HEADLEY BROTHERS LTD

Ashford, Kent TN24 8HH

1997

The Journal of
Laryngology and Otology