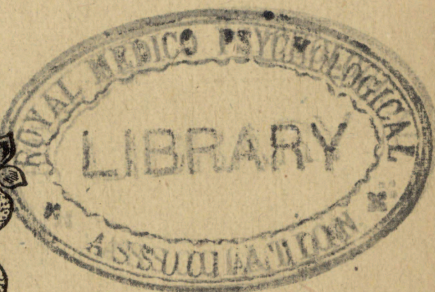


VOL. XCIV, NO. 395

APRIL, 1948

THE JOURNAL OF MENTAL SCIENCE

(THE BRITISH JOURNAL OF PSYCHIATRY)



BY AUTHORITY OF
THE ROYAL MEDICO-PSYCHOLOGICAL ASSOCIATION

EDITOR-IN-CHIEF

G. W. T. H. FLEMING

CO-EDITORS

Alexander Walk and P. K. McCowan

AND WITH THE ASSISTANCE OF

E. D. Adrian	E. G. Holmes
F. C. Bartlett	C. J. McCarthy
S. M. Coleman	Alfred Meyer
C. J. C. Earl	Lionel S. Penrose
Sir A. Fleming	A. A. W. Petrie
F. L. Golla	E. T. O. Slater

W. Stephenson

LONDON

J. & A. CHURCHILL, LTD

Published Four times Yearly, Ten Shillings and Sixpence net

THE JOURNAL OF MENTAL SCIENCE

Communications on general editorial matters, including MSS. for publication, books for review and other printed matter, and communications regarding the *Epitome* section, including journals to be abstracted, should be sent to the **Editor-in-Chief, Barnwood House, Gloucester.**

Communications and inquiries regarding sales should be addressed to the Publishers, **Messrs. J. & A. CHURCHILL, Ltd., 104, Gloucester Place, Portman Square, London, W.1;** and those regarding Advertisements to **Messrs. S. & H. FRETWELL, Ltd., 92, Fleet Street, London, E.C.4.** Phone: Central 5587/8.

THE ROYAL MEDICO-PSYCHOLOGICAL ASSOCIATION

PUBLICATIONS

From MESSRS. ADLARD & SON, LTD.,
Bartholomew Press, Dorking.

- "**The Clinical Study of Mental Disorders.**" By J. R. LORD, C.B.E., M.D., F.R.C.P.E.
Price 6/-. Postage 4d.
- The Charter and Bye-Laws of the Association.** Price 1/-. Postage 1d.
- Engraved Book-Plate of the Association.** Price 1/-. Postage 1d.
- Enquiry (History) Form,** supplied in three sizes: 16 pp., 9 $\frac{1}{4}$ " x 6 $\frac{1}{4}$ "; 8 pp., 12 $\frac{3}{4}$ " x 8" 4 pp., 16" x 10". Prices on application.
- Card of Practical Instruction.** Prices on application.

From MESSRS. J. & A. CHURCHILL, LTD.:

- Catalogue of the Library of the Royal Medico-Psychological Association.** 1928.
Price 2/-. Post free.

From BAILLIÈRE, TINDALL & COX:

- "**Handbook for Mental Nurses.**" 7th edn. 1923. Price 7/- net.
- "**Manual for Mental Deficiency Nurses.**" 1931. Price 6/6 net.
- "**Occupational Therapy Brochure.**" 1938. Price 1/-.

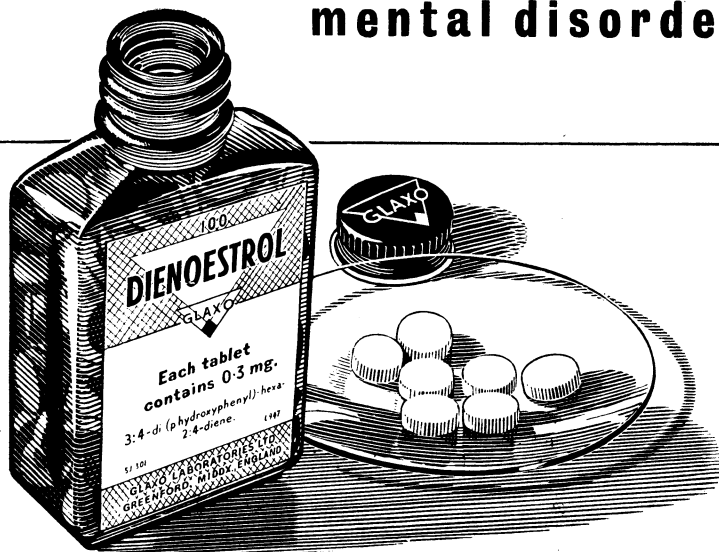
From the SECRETARY, 11 Chandos Street, London, W. 1:

- "**Regulations and Rules for the Examinations for the Certificates of Proficiency in Mental Nursing and in Nursing Mental Defectives.**" Price 1/-.
Postage 1d.
- "**Syllabuses for the Examinations for the Certificates of Proficiency in Nursing Mental Defectives.**" Price 2d. each. Postage 1d.
- Examination Papers, 1928-38** (reprinted). Price 1/6. Postage 1d.

Made and printed in Great Britain.

LIBRARY

oestrogens and mental disorders



Efficient oestrogenic therapy has a special place in the management of mental disorder in women because disturbance of endocrine functions, usually accompanied by menstrual symptoms, often has a psychiatric manifestation. A synthetic oestrogen of low toxicity such as Dienoestrol *Glaxo* is therefore of more than usual interest to specialists in psychological medicine. Dienoestrol *Glaxo* is an oestrogen fully effective by mouth, and is of proved value in the symptomatic treatment of the physical and mental disturbance of the menopause, and in certain cases of amenorrhoea.



Also available : **CLINESTROL** (Stilboestrol)
Tablets: 0.5, 1.0 and 5 mg.
Bottles of 100 and 1,000* (5 mg. tablets: 25 and 1,000)
*Dispensing size

GLAXO LABORATORIES LTD., GREENFORD, MIDDLESEX. BYRON 3434

a

ADLARD & SON

LIMITED

**BARTHOLOMEW PRESS
DORKING — SURREY**



**PRINTERS
OF THIS ::
:: JOURNAL**

ESTIMATES SUBMITTED PROMPTLY

FOUNDED IN 1766, the Firm has continued uninterruptedly, and is able to undertake **ALL CLASSES OF PRINTING**.

The Staff is Specially Trained in the production of all printed matter connected with **Private Hospitals and Homes, Medical, Scientific and other Institutions**.

Regd. Offices : 194/200 BISHOPSGATE, E.C. 2.

Tel. : DORKING 2896.

HOLME LACY HOSPITAL

**HOLME LACY
HEREFORD ::**

**FOR LADIES SUFFERING FROM
NERVOUS AND MENTAL DISORDERS.**

This Hospital is situated in 30 acres of garden with magnificent views of the Wye Valley, and homelike surroundings.

Every facility for specialized investigation and treatment provided.

Voluntary, Temporary and Certified patients received.

Terms from Four and a Half Guineas weekly.

For further particulars apply to the Physician-Superintendent.

Telephone : Burghill 4.

Wonford House, Exeter

A Registered Hospital for treatment of mental disorders of the educated classes. Cases under certificate, voluntary and temporary patients, received for treatment. Modern methods of treatment available. Terms moderate.

Apply Medical Superintendent.

Tel. Exeter 2642

MENTAL HOSPITALS, INSTITUTIONS, HOMES, ETC.

ST. ANDREW'S HOSPITAL

FOR NERVOUS AND MENTAL DISORDERS

NORTHAMPTON

President: THE MOST HON. THE MARQUESS OF EXETER, K.G., C.M.G., A.D.C.

Medical Superintendent: THOMAS TENNENT, M.D., F.R.C.P., D.P.H., D.P.M.

This Registered Hospital is situated in 130 acres of park and pleasure grounds. Voluntary patients, who are suffering from incipient mental disorders or who wish to prevent recurrent attacks of mental trouble, temporary patients, and certified patients of both sexes are received for treatment. Careful clinical, bio-chemical, bacteriological, and pathological examinations. Private rooms with special nurses, male or female, in the Hospital or in one of the numerous villas in the grounds of the various branches can be provided.

WANTAGE HOUSE

This is a Reception Hospital in detached grounds with a separate entrance, to which patients can be admitted. It is equipped with all the apparatus for the complete investigation and treatment of Mental and Nervous Disorders by the most modern methods; insulin treatment is available for suitable cases. It contains special departments for hydrotherapy by various methods, including Turkish and Russian baths, the prolonged immersion bath, Vichy Douche, Scotch Douche, Electrical baths, Plombières treatment, etc. There is an Operating Theatre, a Dental Surgery, an X-Ray Room, an Ultra-Violet Apparatus, and a Department for Diathermy and High-Frequency treatment. It also contains Laboratories for biochemical, bacteriological, and pathological research. Psychotherapeutic treatment is employed when indicated.

MOULTON PARK

Two miles from the Main Hospital there are several branch establishments and villas situated in a park and farm of 650 acres. Milk, meat, fruit and vegetables are supplied to the Hospital from the farm, gardens, and orchards of Moulton Park. Occupational therapy is a feature of this branch, and patients are given every facility for occupying themselves in farming, gardening and fruit-growing.

BRYN-Y-NEUADD HALL

The seaside house of St. Andrew's Hospital is beautifully situated in a Park of 330 acres at Llanfair-fechan, amidst the finest scenery in North Wales. On the North-West side of the Estate a mile of sea-coast forms the boundary. Patients may visit this branch for a short seaside change or for longer periods. The Hospital has its own private bathing house on the seashore. There is trout-fishing in the park.

At all the branches of the Hospital there are cricket grounds, football and hockey grounds, lawn tennis courts (grass and hard courts), croquet grounds, golf courses, and bowling greens. Ladies and gentlemen have their own gardens, and facilities are provided for handicrafts, such as carpentry, etc.

For terms and further particulars apply to the Medical Superintendent (Telephone No. 2356 and 2357 Northampton), who can be seen in London by appointment.

HEIGHAM HALL, NORWICH

PRIVATE MENTAL HOME

for Nervous and Mental illness. All forms of treatment available. Fees from 4 gns. per week upwards, according to requirements. Vacancies occasionally exist at reduced fees on the recommendation of the patient's own physician.

Apply to **Dr. J. A. SMALL.**

TELEPHONE: NORWICH 20080.

LAVERSTOCK HOUSE SALISBURY WILTS

PRIVATE MENTAL HOME FOR LADIES AND GENTLEMEN

Completely up to date. Lovely house and grounds (18 acres). Certified and uncertified cases taken. Facilities for going to the seaside.

ESTABLISHED OVER 200 YEARS

Apply to the Med. Supt. for illustrated brochure.

Tel.: SALISBURY 2612.

**To help vanquish
depression masquerading
as bodily ailments**



Depressions manifesting themselves as apparently unrelated somatic complaints seldom yield to treatment until the patient's underlying emotional conflicts have been, in some measure, exposed and ventilated. Thereafter, 'Benzedrine' Tablets may give significant help in speeding the patient's recovery from depression masquerading as a bodily ailment. As his depression diminishes, the patient's preoccupation with his symptoms should decrease, thus doing much to relieve his psychosomatic distress.

'Benzedrine' Tablets

Sample and literature sent on the signed request of physicians

Each tablet contains 5 mg. amphetamine sulphate

Manufactured and distributed by
MENLEY & JAMES LTD.
123 Coldharbour Lane, London, S.E.5
For Smith, Kline & French Laboratories

BTC33

CLIFFDEN, TEIGNMOUTH

FOR THE EARLY TREATMENT OF
NERVOUS DISORDERS AND PATIENTS
. . . NEEDING REST AND CARE . . .

A well appointed House with spacious balconies and extensive views of the South Devon Coast. Beautiful Garden and own Dairy in 35 acres.

In the same grounds,

ROWDENS, a comfortable house with lovely views
Private road to the beach

There is also a charming house,

EBWORTHY, MANATON,

situated in 25 acres, 1,100 ft. up for bracing moorland air.

Resident Physicians :

BERTHA M. MULES, M.D., B.S. **ANNE S. MULES, M.R.C.S., L.R.C.P.**

Telephones: TEIGNMOUTH 289 & 537.

THE
INTERNATIONAL JOURNAL
 OF
PSYCHO-ANALYSIS

Founded by

ERNEST JONES

Official Organ of the International Psycho-Analytical Association

Edited by

ADRIAN STEPHEN

With the assistance of

MARJORIE BRIERLEY (London)

C. P. OBERNDORF (New York)

SYLVIA PAYNE (London)

JOHN RICKMAN (London)

Contents of Volume XXVII, Parts 1 & 2, 1946

ORIGINAL PAPERS:

On Group Analysis	Foulkes, S. H.
An Unusual Neurosis Following Head Injury ...	Rosenberg, Elizabeth.
The Treatment of Psychoneurosis in the British Army ...	Thorner, H. A.
The Mental and the Physical Origins of Behaviour ...	Adrian, E. D.
Hypnotism and Suggestion (1888)	Freud, Sigmund.
From King Lear to the Tempest	Sharpe, Ella Freeman.
Object-Relationships and Dynamic Structure ...	Fairbairn, W. Ronald D.
A Valedictory Address	Jones, Ernest.
<i>Abstracts. Book Reviews. Publications Received. Obituary. Bulletin of the International Psycho-Analytical Association.</i>	

Editorial Communications should be sent to the Editor, Dr. Adrian Stephen, 1, Upper Harley Street, W.1, or to Dr. C. P. Oberndorf, 112 West 59th Street, New York.

Business Communications should be sent to the Publishers, Baillière, Tindall & Cox, 7 & 8 Henrietta Street, Covent Garden, London, W.C.2.

The Annual Subscription is **30s.** per Volume
 of Two Double-Parts

Published for the Institute of Psycho-Analysis by

BAILLIÈRE, TINDALL & COX

7 & 8 Henrietta Street, London, W.C.2

Genetics

ANIMAL GENETICS AND MEDICINE. By HANS GRÜNEBERG, M.D., Ph.D.
Pp. 308, 33 illustrations, 21s. net.

Neurology

DEVELOPMENTAL DIAGNOSIS. By ARNOLD GESELL, M.D., and CATHERINE S. AMATRUDA, M.D. *Second Edition.* Pp. 496, 9 illustrations, 32s. 6d. net.

Sexual Disorders

SEXUAL DISORDERS IN THE MALE. By KENNETH WALKER, F.R.C.S., and E. B. STRAUSS, D.M., F.R.C.P. *Second Edition.* Pp. 262, 30 illustrations, 10s. 6d. net.

New Book**HORMONES AND BEHAVIOUR**

By FRANK A. BEACH, Ph.D., Professor of Psychology, Yale University.
Pp. 382. 32s. 6d. net.

SYNOPSIS OF CONTENTS: Courtship and Mating—Reversal or Bisexuality of Mating Behaviour—Oviposition, Parturition, and Parental Behaviour—Migration—Aggression, Social Dominance or Submission, and Territory Defense—Emotion—Conditioning and Other Types of Learning—General Locomotor Activity—Homeostasis, Metabolism, Metamorphosis, and Moulting—Morphologic Structures Employed in Specific Behaviour Pattern—The Role of Nervous Stimulation—Developmental Aspects—Major Sources of Variability—Interpretations of Hormonal Effects—Bibliography—Glossary.

HAMISH HAMILTON MEDICAL BOOKS
90, Great Russell Street, London, W.C.1

Northumberland House Green Lanes, Finsbury Park, N. 4

A PRIVATE HOSPITAL for the treatment of Mental and Nervous illnesses. Conveniently situated and easy of access from all parts. Six acres of ground, facing Finsbury Park. Voluntary and Temporary Patients received without certification. E.C.T., Group Psychotherapy. : Insulin Coma Unit.

Trained Resident and Visiting Staff.

Telephone: Stamford Hill 7866/7 (2 lines.) Telegrams: "Subsidiary, London."

For further particulars apply to the Medical Superintendent,

ROBERT M. RIGGALL,
Member, British Psycho-Analytical Society.

BETHLEM ROYAL HOSPITAL

Telephone: SPRINGPARK 1180-1181.

President: HER MAJESTY QUEEN MARY.
**FOR NERVOUS AND MENTAL
DISORDERS**

Phy.-Sup.: J. G. HAMILTON, M.D., D.P.M.
**Monks Orchard, Eden Park,
Beckenham, Kent**

This Registered Hospital is situated at Monks Orchard in some 250 acres of park, pleasure and farm grounds.

Applications can be considered on behalf of patients of the educated classes in a presumably curable condition. With a view to early treatment, voluntary or uncertified patients are admitted. Patients who can contribute 5 guineas weekly towards the cost of treatment and maintenance may be received as vacancies arise. The Committee will also consider applications for admission at lower rates and in certain cases will be prepared to admit patients free of charge. The comfort of sensitive patients is greatly enhanced by the fact that the majority are given single bedrooms.

Additional Accommodation for Male Patients is now available by reason of completion of war damage repairs.

The Medical Staff have access to a panel of Consultants in cases which present unusual symptoms requiring specialised investigation and treatment.

BARNWOOD HOUSE

GLOUCESTER



CRICKLEY COURT—ONE OF THE SEPARATE VILLAS

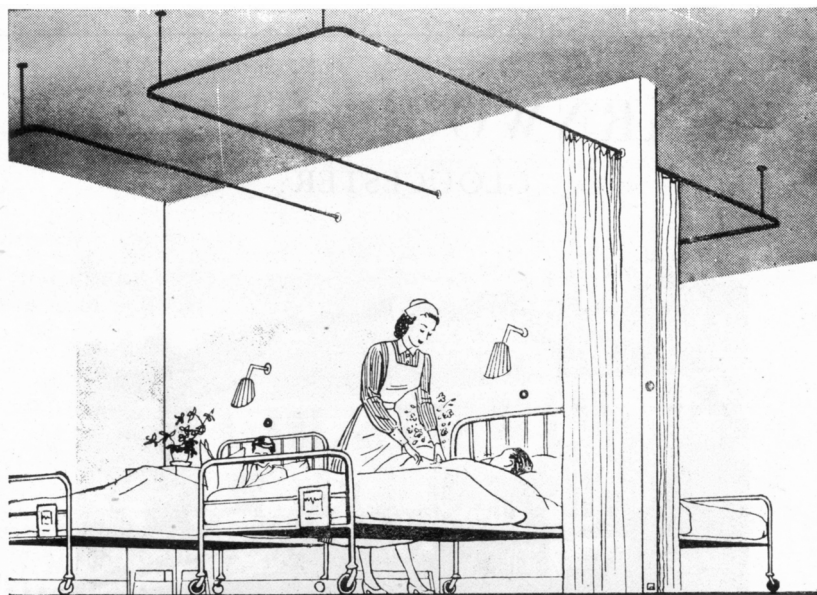
A REGISTERED HOSPITAL for the CARE and TREATMENT of LADIES and GENTLEMEN suffering from NERVOUS and MENTAL DISORDERS. Within two miles of the G.W. Railway, and L.M.&S. Railway Stations at Gloucester, the Hospital is easily accessible by rail from London, and all parts of the United Kingdom. It is beautifully situated at the foot of the Cotswold Hills, and stands in its own grounds of over 300 acres. Voluntary Patients of both sexes are also received for treatment. Special accommodation is also provided at four villa residences, all of which stand in their own grounds and are entirely separate from the main Hospital. All the most modern methods of treatment including electric shock and prefrontal leucotomy are used.

For Terms, etc., apply to

G. W. T. H. FLEMING, M.R.C.S., L.R.C.P., D.P.M.,
Physician Superintendent,

who may be seen in London by appointment

TELEPHONE: No. 6207 GLOUCESTER



The advancement of medical science

The organic chemist, the pharmacologist and the bacteriologist are allies of the doctor in the fight against disease. Their work in research and production is an essential aid to the advancement of medical science. In common with other leading organisations of the British drug industry, Boots are constantly active in promoting improved methods of production and developing new discoveries. Linked with these activities are 1,200 Boots branches throughout the country, thus ensuring that every doctor can readily obtain any available drug, whether for specific or general use.



BOOTS PURE DRUG COMPANY LTD. NOTTINGHAM

ELIXIR GABAIL

(BROMO-VALERIANATE)

The Ideal Sedative in all Nervous Affections

Elixir Gabail combines the sedative action of Bromide and Chloral Hydrate with the nervine and anti-spasmodic deodorised Valerianate. Pharmaceutically it is as pleasant and palatable as it is efficacious from the therapeutic standpoint, the disagreeable odour and flavour of the Valerian having been completely removed without in any way impairing its therapeutic value.

In Hysteria and Psychasthenia it relieves nervous excitement and produces a calm state of mind that is conducive to rapid recovery. It is also of value in states of temporary emotional excitement, in Hypochondriasis and Melancholia.

Dosage: One tablespoonful in water twice or thrice daily. As a hypnotic: two tablespoonfuls in water at bedtime.

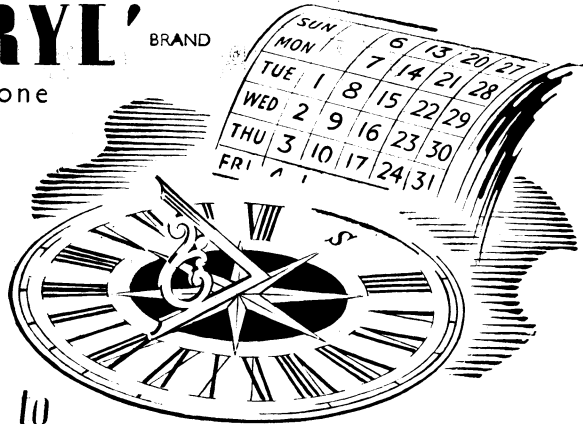
Supplied in bottles of 187 c.c. and in bulk for Hospital use.

Literature and Samples on request.

THE ANGLO-FRENCH DRUG Co. Ltd.
11-12, Guilford Street, London, W.C. 1

TRADE MARK

'SONERYL' BRAND
butobarbitone



short
sedation to
prolonged narcosis

One of the advantages of 'Soneryl' is the ease with which, by graduating the dose, the degree of action may be varied from the mildly sedative to the deeply hypnotic.

This is of particular interest in psychiatric practice for it enables the one drug to be used as a hypnotic in all the mental states from simple anxiety to intractable psychosis. It may be given for long periods with the minimal side-effects.

Generally 'Soneryl' is given orally in tablets (grains $1\frac{1}{2}$ in each), but for cases where it is impracticable to give the drug by mouth, suppositories containing three, five or ten grains of 'Soneryl' are available.

Supplies: Tablets in containers of 12, 25, 100 and 500
Suppositories in boxes of 5



manufactured by

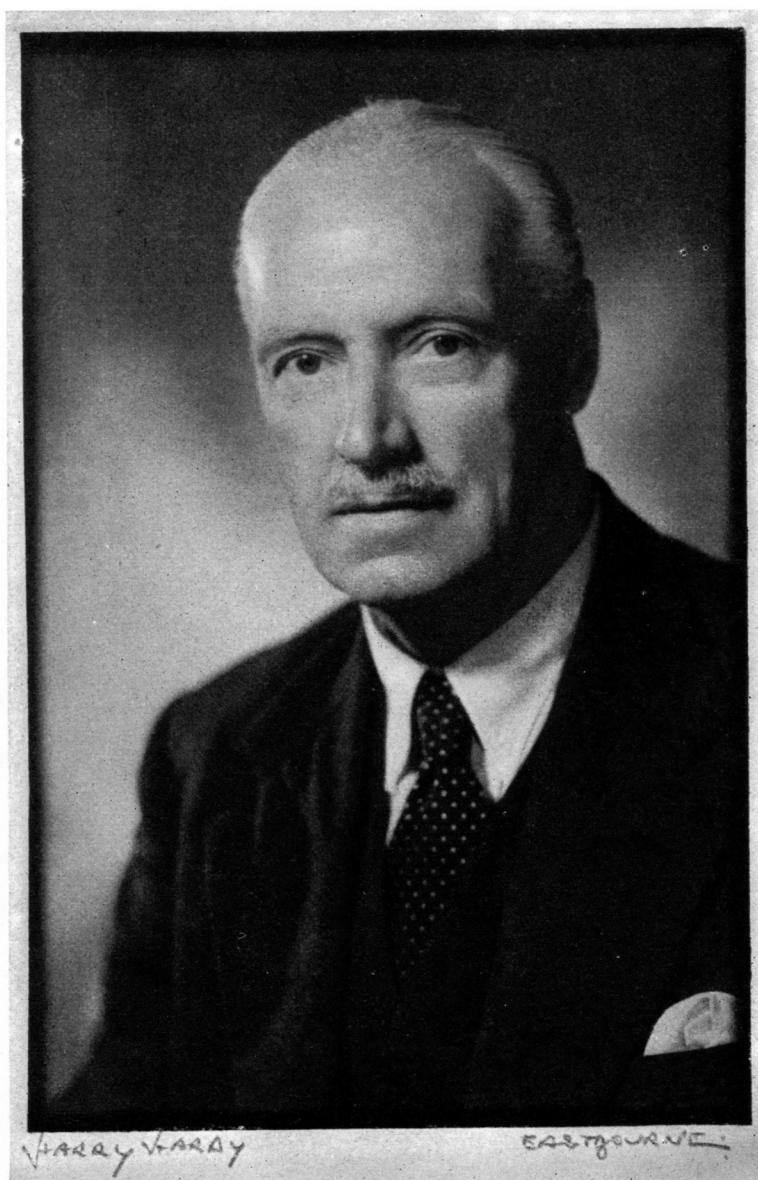
MAY & BAKER LTD.

distributors

PHARMACEUTICAL SPECIALITIES (MAY & BAKER) LTD. DAGENHAM

47228

Facing first matter



W. G. MASEFIELD, C.B.E., M.R.C.S., L.R.C.P., D.P.M., J.P.

President,
1947-8.