

The prevalence and characterization of verotoxin-producing *Escherichia coli* isolated from cattle and pigs in an abattoir in Hong Kong

P. H. M. LEUNG¹, W. C. YAM², W. W. S. NG³ AND J. S. M. PEIRIS^{2*}

¹ Department of Nursing and Health Sciences, The Hong Kong Polytechnic University, Hung Hom, Hong Kong SAR, China

² Department of Microbiology, Queen Mary Hospital, The University of Hong Kong, Hong Kong SAR, China

³ School of Professional and Continual Education, The University of Hong Kong, Pokfulam Road, Hong Kong SAR, China

(Accepted 5 December 2000)

SUMMARY

The aim of the study was to define the prevalence of verotoxin-producing *Escherichia coli* (VTEC) in cattle and pigs in a Hong Kong abattoir. Faecal and carcass samples collected from 986 cattle and 487 pigs from an abattoir were tested for verotoxin (VT) by PCR and cytotoxicity assays. VTEC was isolated from 41·5 and 1·8% of cattle faecal and carcass samples and from 2·1 and 0·2% of porcine faecal and carcass samples, respectively. Amongst 409 VTEC isolates from cattle, 9 were serotype O157:H7 and *eaeA*⁺. The most prevalent *vt* genotype among bovine VTEC was *vt1*⁺*vt2*⁺ (73·8%) and in porcine VTEC was *vt2e*⁺ (30%). None of the porcine VTEC isolates and 9·3% of the bovine VTEC isolates was *eaeA*⁺. The non-O157 serogroup VTEC isolates carrying *eaeA* and *EHEC-hlyA* belonged to serogroups O172, O15, O84, O91, O110 and O121. The local dietary preference for pork or chicken (rather than beef), the low VTEC carriage in pigs, the rarity of additional virulence factors (*eaeA*) in VTEC isolated from cattle may explain the apparently low incidence of human diarrhoeal disease associated with VTEC in Hong Kong hitherto. However, the presence of non-O157 VTEC strains carrying the *eaeA* virulence marker in cattle highlights the fact that sole reliance on sorbitol-MacConkey agar for screening human VTEC isolates may underestimate the human disease burden. The changing dietary habits of the population in Hong Kong reinforce the need for continued vigilance.

INTRODUCTION

Verocytotoxin (VT) is a potent cytotoxin that inhibits eukaryotic protein synthesis and is a well-established virulence factor for *Escherichia coli* (VTEC) associated with human disease [1]. VTEC are geographically widespread and have been found to be associated with human disease ranging from bloody diarrhoea to the haemolytic-uraemic syndrome (HUS) [1]. The pathogenicity of VTEC is associated with additional virulence factors, the best known being the attaching-and-effacing (*eae*) A gene that encodes

intimin, a 94 kDa outer-membrane protein [2]. Intimin enables VTEC to cause attaching-and-effacing lesions in the microvilli of the host intestine. Another virulence factor, the enterohaemorrhagic *E. coli* haemolysin A (*EHEC-hlyA*) gene, is encoded on a 60 MDa plasmid and is associated with EHEC strains [2]. Although Sandhu and colleagues reported that *EHEC-hlyA* was present in almost all *eaeA*-positive VTEC isolates obtained from animals [3], its role in the pathogenicity of VTEC is poorly understood.

VTEC is a naturally occurring organism in the gut flora of cattle [4] and has been isolated from the gut of other animals such as sheep, goats and pigs [1].

* Author for correspondence.

Outbreaks are associated with consumption of contaminated undercooked ground beef and vegetables or unpasteurized milk [2]. Serotype O157:H7, the best-known serotype of VTEC associated with human disease, was responsible for the foodborne outbreak that occurred in Japan in 1996 in which a total of 9578 cases were reported [5]. DNA patterns of the isolates from infected cases suggested a heterogeneous source of contamination.

The epidemiology of VTEC in man and animals has been studied in Western countries and Japan [6–8] but data from South East Asia and China are sparse. In this study, faecal and carcass samples were collected from cattle and pigs in an abattoir in Hong Kong, in an attempt to study the frequency of VTEC carriage in healthy livestock in the province. Local abattoirs process over 2 000 000 pigs and 50 000 cattle annually [9]. Since the local community consumes more pork than beef, the carriage of VTEC in pigs was of particular interest. Other virulence factors associated with VTEC strains isolated were also examined.

MATERIALS AND METHODS

Collection of faecal and carcass samples

Rectal and carcass swabs were collected immediately after the slaughter and evisceration of animals in a Government abattoir in Hong Kong. The animals sampled were 986 adult cattle and 487 adult pigs transported to Hong Kong immediately prior to slaughter from various provinces in mainland China. The samples were collected monthly between August 1996 and December 1998.

Culture for VTEC

Rectal swabs were inoculated onto sorbitol–MacConkey (SMAC) agar (Oxoid Ltd, Basingstoke, UK) and incubated at 37 °C overnight. Swabs from carcasses were inoculated into VTEC enrichment broth (2 g tryptone, 1.12 g bile salt, 5 g lactose, 4 g K₂HPO₄, 1.5 g KH₂PO₄, 5 g NaCl and 0.02 g novobiocin per litre) and incubated overnight with gentle agitation at 37 °C. A loopful of each broth culture was streaked onto a SMAC plate. One ml was centrifuged at 13 000 r.p.m. in a microcentrifuge for 5 min and the bacterial cell pellet was used for PCR. Red or pink-coloured bacterial colonies on SMAC plates were regarded as sorbitol fermenting and colourless colonies as sorbitol non-fermenting.

Detection of *vt* genes by PCR and DNA hybridization

The bacterial pellet from each carcass broth culture and a colony sweep from the SMAC plate of each rectal swab was suspended in 0.5 ml sterile distilled water and heated at 80 °C for 15 min. The supernatant was used for PCR analysis using primers MK1 and 2 (Table 1) as described previously [10]. The 25 µl PCR mixture consisted of 3 µl supernatant, 50 mM KCl, 10 mM Tris–HCl (pH 8.3), 1.5 mM MgCl₂, 240 µM dNTP, 400 µg/ml BSA, 20 pmole of each primer and 1 U AmpliTaq Gold DNA polymerase (Perkin–Elmer Cetus, Norwalk, CT, USA). The PCR mixture was heated to 94 °C for 12 min and then subjected to 30 cycles of amplification (1 min at 94 °C, 3 min at 43 °C and 1 min at 72 °C respectively), followed by a final extension period of 7 min at 72 °C. Amplified products were visualized by ethidium bromide staining after electrophoresis in a 2% agarose gel. PCR-amplified DNA was transferred from the agarose gel to Hybond-N nylon membranes (Amersham, Arlington Heights, IL, USA) by Southern blotting [11]. The membranes were hybridized at 45 °C overnight, with probes 428-I, 428-II and vt2e (Table 1) for detection of *vt1*, *vt2* and *vt2e* (GenBank accession number M29153 [12]) respectively. These probes were labelled using the DIG DNA 3' end-labeling and detection kit (Boehringer–Mannheim, Mannheim, Germany). The overnight hybridization was followed by two stringency washes of the membrane at 50EC in 0.2 × SSC (30 mM NaCl, 3 mM trisodium citrate, pH 7.0) with 0.1% SDS for 15 min. Labelled DNA was visualized by anti-digoxigenin enzyme-linked immunosorbent assay.

Detection of VT production by vero cell assay

Samples positive for *vt* by PCR were confirmed by a vero-cell cytotoxicity assay [13]. For each specimen, 10 colonies were picked from the SMAC plate and cultured in non-selective nutrient broth. One ml of each broth culture was centrifuged at 13 000 r.p.m. for 15 min; 50 µl of supernatant was diluted 1 in 5 in Eagle's minimal essential medium and added to vero cell monolayers grown in 96-well microtitre plates. The plates were incubated at 37 °C overnight in 5% CO₂ and cells were examined for cytopathic effect (CPE) using an inverted microscope. Supernatants producing CPE of ≥ 50% of the monolayer were considered VT producers.

Table 1. Primers and probes used for detection of virulence genes of VTEC isolates

| | Target gene | Sequence (5'–3') | Location (bp) | Reference |
|---------------|------------------|------------------------|---------------|------------|
| Primer | | | | |
| MK1 | <i>vt</i> | TTTACGATAGACTTCTCGAC | 311–330 | 10 |
| MK2 | <i>vt</i> | CACATATAAATTATTTTCGCTC | 515–535 | |
| hlyAF | <i>EHEC-hlyA</i> | GCATCATCAAGCGTACGTTCC | 70–90 | 14 |
| hlyAR | <i>EHEC-hlyA</i> | AATGAGCCAAGCTGGTTAAGCT | 582–603 | |
| C1 | <i>eaeA</i> | TCGTACAGTTGCAGGCCTGGT | 803–824 | 15 |
| C2 | <i>eaeA</i> | CGAAGTCTTATCCGCCGTAAGT | 1890–1912 | |
| Probe | | | | |
| 428-I | <i>vt1</i> | GATAGTGGCTCAGGGGATAA | 428–441 | 10 |
| 428-II | <i>vt2</i> | AACCACACCCACGGCAGTTA | 428–447 | 10 |
| vt2e | <i>vt2e</i> | AATCATAACACCAGGAAG | 431–450 | This study |

Detection of *eaeA* and *EHEC-hlyA* genes in VTEC isolates

VTEC isolates confirmed by vero cell assay were studied for their *eaeA* and *EHEC-hlyA* genes by multiplex PCR. The primers were based on the central conserved region and the 5' region of the respective genes [14, 15]. The PCR reaction mix was identical to that for *vt* gene detection. Amplification conditions were as follows: 94 °C for 12 min followed by 30 cycles of amplification for 1 min each at 94 °C, 55 °C and 72 °C. Primers and probes for detection and identification of virulence genes in VTEC are listed in Table 1. *eaeA*-positive strains were further confirmed by fluorescence actin stain (FAS), as described previously [13].

Serotyping of isolates

All VTEC isolates identified by vero cell assay were confirmed by traditional biochemical tests. All sorbitol non-fermenting strains were serotyped using the *E. coli* O157:H7 Latex Test kit (Remel, Lenexa, KS, USA). Non-O157 VTEC isolates harbouring *eaeA* and *EHEC-hlyA* genes were serotyped at the Microbiological Diagnostic Unit, Department of Microbiology and Immunology, University of Melbourne, Melbourne, Australia.

Pulsed-field gel electrophoresis of O157:H7 isolates

The method of Cameron and colleagues [16] was used with minor modifications in the preparation of DNA plugs. A small portion of the plug (2 × 7 mm) was digested with 16 units of restriction enzyme *Xba*I (Amersham Pharmacia Biotech, Uppsala, Sweden) at 37 °C overnight. Electrophoresis was performed in 1% agarose in 0.5 × TBE (12 °C buffer temperature)

at 6 V/cm in a CHEF MAPPER system (Bio-Rad, Hercules, California, USA) with pulse times increasing from 5–50 s over a period of 20 h.

RESULTS

Prevalence and characteristics of VTEC in abattoir animals

VTEC were isolated from 409 (41.5%) faecal and 18 (1.8%) carcass samples from 986 cattle, and from 10 (2.1%) faecal and 1 (0.2%) carcass samples from 487 pigs (Table 2). Only four (0.41%) cattle yielded VTEC from both faeces and carcasses. PCR revealed a higher VTEC carriage in both species, particularly in carcasses (Table 2). The carriage rate in cattle appeared to be lower between May to August (data not shown) and highest in February and November.

Nine isolates of O157:H7 were isolated from cattle, one from a carcass and the remainder from faeces (Table 3). The O157:H7 isolate from the cattle carcass did not produce VT. All nine O157:H7 VTEC strains were sorbitol non-fermenting while 81% (324/401) of the non-O157 VTEC fermented sorbitol. In addition, one third of the non-O157 VTEC carrying principal virulence factors also fermented sorbitol. VTEC strains with *eaeA* were positive in the FAS test. Serotypes of all 30 non-O157 VTEC isolates carrying the principal virulence factors (*vt*, *eaeA* and *EHEC-hlyA* genes) isolated from cattle were determined and they were O172:H-, O15:H-, O91:H14, O84:H-, O110:H16, O121:H19, O rough:H-, O rough:H31 and O non-typeable:H- (Table 3).

Genotypic profile of the VTEC isolates

The genotypes of the VTEC isolates from cattle are summarized in Table 3. The most frequently isolated

Table 2. Carriage rate of VTEC in cattle and pigs detected by PCR and vero cell assay

| | Cattle | | Pigs | |
|------------------|------------------------|------------------------|-----------------------|------------------------|
| | Faeces (No. = 986)* | Carcass (No. = 986) | Faeces (No. = 487) | Carcass (No. = 487) |
| PCR | 62.5% | 11.4% | 5.1% | 2.3% |
| Vero cell assay† | 41.5% | 1.8% | 2.1% | 0.2% |

* No., number of samples.

† The percent values for vero cell assay are also the total numbers of VTEC isolates.

Table 3. Genotypic profile of VTEC strains isolated from cattle

| Serotypes | Number of strains | <i>vt-1</i> | <i>vt-2</i> | <i>eaeA</i> | <i>EHEC-hlyA</i> | Verotoxicity |
|-------------------|-------------------|-------------|-------------|-------------|------------------|--------------|
| O157:H7 | 4 | + | + | + | + | + |
| | 4 | - | + | + | + | + |
| O172:H- | 10 | - | + | + | + | + |
| O121:H19 | 1 | + | + | + | + | + |
| O111:H16 | 1 | + | + | + | + | + |
| O91:H14 | 2 | + | + | + | + | + |
| O84:H- | 1 | + | + | + | + | + |
| O15:H- | 2 | - | + | + | + | + |
| O15:H- | 2 | + | + | + | + | + |
| O rough:H- | 4 | + | + | + | + | + |
| O rough:H31 | 1 | + | + | + | + | + |
| O non-typable:H- | 6 | + | + | + | + | + |
| Other non-O157:H7 | 112 | + | + | - | + | + |
| | 25 | - | + | - | + | + |
| | 168 | + | + | - | - | + |
| | 64 | - | + | - | - | + |
| | 1 | + | - | - | + | + |
| | 1 | - | - | - | + | + |

Table 4. Genotypic profiles of VTEC isolated from rectal swabs from pigs

| Number of isolates | <i>vt1</i> | <i>vt2</i> | <i>vt2e</i> | <i>eaeA</i> | <i>EHEC-hlyA</i> |
|--------------------|------------|------------|-------------|-------------|------------------|
| 2 | + | - | - | - | + |
| 1 | - | + | - | - | + |
| 1 | - | + | + | - | - |
| 1 | - | + | - | - | - |
| 1 | + | + | - | - | + |
| 1 | + | + | - | - | - |
| 3 | - | - | + | - | - |

bovine *vt* genotype was *vt1⁺vt2⁺* (73.8%). Only one strain (0.24%) carried *vt1⁺* alone. One verotoxic isolate did not hybridize with the *vt1-*, *vt2-* or *vt2e-* specific probes. This isolate was also negative in PCR for *vt2c* (results not shown). The virulence markers *eaeA⁺* and *EHEC-hlyA⁺* were present in 9.3% and 43.3% respectively, of the bovine VTEC strains.

Thirty non-O157 and eight O157:H7 strains harboured *vt*, *eaeA* and *EHEC-hlyA* genes. One O157:H7 isolate was non-verotoxic but carried both *eaeA* and *EHEC-hlyA* genes.

The genotypic profiles of VTEC isolated from pigs are summarized in Table 4. None of the porcine VTEC strains carried the *eaeA* gene and three strains carried *vt2e* gene alone. The most prevalent genotype was *vt2e⁺eaeA⁻EHEC-hlyA⁻*, three isolates collected during the same abattoir visit belonged to this genotype. The next most common genotype was *vt1⁺eaeA⁻EHEC-hlyA⁺*. Two isolates fell into this category and they were isolated during different abattoir visits (Table 4).

Pulsed-field gel electrophoresis of O157:H7 isolates

Seven PFGE patterns were identified from the nine O157:H7 isolates and were designated A–G (Fig. 1). Isolates recovered from different abattoir visits had

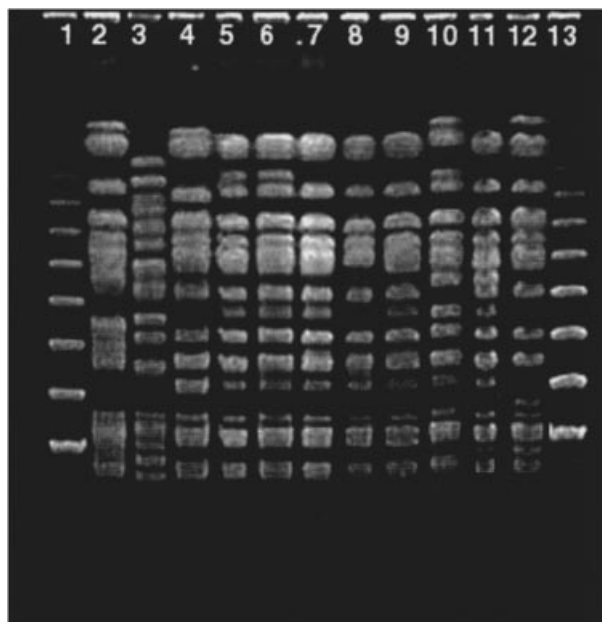


Fig. 1. Pulsed-field gel electrophoresis of O157:H7 isolates. Lanes 1 and 13, phage lambda DNA ladder size marker (Bio-Rad). Lane 2, O157:H7 (WHO strain). Lane 3, *E. coli* ATCC25922 (non-O157:H7 control). Lane 4, pattern A. Lanes 5 and 6, pattern B. Lanes 7 and 9, pattern C. Lane 8, pattern D. Lane 10, pattern E. Lane 11, pattern F. Lane 12, pattern G.

Table 5. PFGE patterns and *vt* genotypes of O157:H7 strains isolated from cattle at various abattoir visits

| Date of abattoir visit | Number of samples | PFGE pattern | <i>vt</i> genotype |
|------------------------|-------------------|--------------|---------------------------------------|
| August 1996 | 1 | A | No <i>vt</i> gene detected |
| April 1998 | 2 | B | <i>vt1⁺vt2⁺</i> |
| November 1997 | 2 | C | <i>vt2⁺</i> |
| | 1 | D | <i>vt1⁺vt2⁺</i> |
| August 1998 | 1 | E | <i>vt1⁺vt2⁺</i> |
| January 1997 | 1 | F | <i>vt2⁺</i> |
| June 1998 | 1 | G | <i>vt2⁺</i> |

different patterns (Table 5), two isolates from a visit in April 1998 belonged to pattern B. Three isolates from a visit in November 1997 showed two PFGE patterns, C and D. The latter isolate had a different *vt* genotype.

DISCUSSION

In the present study, 41.5% of cattle harboured VTEC as determined by vero cell assay. The large discrepancy between PCR and the vero cytotoxicity assay may be partly accounted by the novobiocin-containing enrichment medium used for carcass samples, as the medium may be inhibitory to some

VTEC strains [17]. In the evisceration process, the carcass is sprayed with hot water. This may kill contaminant bacteria and may explain the discrepancy between PCR (which can detect non-viable VTEC) and culture in the carcass samples. For the purposes of this study, only those specimens that were verocytotoxic were considered further.

The high carriage rate of VTEC in cattle also indicated that they were reservoirs for transmission of the organism. In other geographic areas, VTEC carriage rates in healthy cattle have been reported to be 34% in France [18], 24.3% in Japan [7], 53% in Sri Lanka [19] and 9.5% in Canada [8]. Our highest carriage rate occurred during the coolest months, which contrasts with the finding in France where the highest VTEC prevalence was in summer [18].

O157:H7 is the best known VTEC serotype associated with human diseases [2] and its presence in healthy animals and meat products has been reported by others [18, 20]. Here, the O157:H7 serotype was detected in 0.9% of the faecal samples from cattle, a rate comparable to that reported by Pradel and colleagues [18]. Eight O157:H7 isolates possessed the principal virulence factors (*vt*, *eaeA* and *EHEC-hlyA*). One of the isolates was *vt⁻* but *eaeA⁺* and *EHEC-hlyA⁺*, loss of *vt* gene probably occurred during subcultivation [21]. Nevertheless, *vt⁻eaeA⁺* O157:H7 and O26:NM have been isolated from healthy and diarrhoeal animals respectively [4, 22] and the pathogenicity of such strains remains to be defined. The PFGE pattern of isolates collected during one abattoir visit (presumably from the same farm) was identical but there were diverse patterns of isolates from different abattoir visits (Fig. 1).

The predominant *vt* genotype has been shown to vary in different geographical locations [18, 19, 23, 24] but the most prevalent *vt* genotype encountered in our cattle was *vt1⁺vt2⁺*. In this study, one verotoxic strain did not belong to *vt1*, *vt2*, *vt2e* or *vt2c* and this isolate requires further study. The predominance of *vt2* (either alone or together with *vt1*) in our VTEC is noteworthy as VT2-producing VTEC were highly associated with HUS [25]. In our previous study on 1003 faecal samples from diarrhoeal patients in Hong Kong, of five VTEC isolated, two O157:H7 and one O rough:H45 harboured *vt2* [26]. In this study, the majority of bovine non-O157 VTEC isolates were negative for *eaeA*. Such *eaeA⁻* VTEC have been reported to cause HUS in humans [27, 28]. Human isolates in Hong Kong have included O rough:H45 and O157:NM *eaeA⁻* strains [26], indicating that *eaeA⁻* VTEC may harbour virulence factors outside

the locus of enterocyte effacement. Such potential virulence factors include the *astA* and *katP*, which encode for a heat-stable enterotoxin and a catalase-peroxidase respectively. These strains have been found in animals and asymptomatic human carriers [29].

Previous studies showed that the *EHEC-hlyA* genotype was more frequently isolated from haemorrhagic colitis (HC) and HUS patients, indicating that this gene might play a role in the disease process [2]. In 66 animal VTEC isolates, the *EHEC-hlyA* and *vt* genes were closely associated, serving as a useful epidemiological marker for rapid selection of VTEC [30]. However, only 43.3% of VTEC from our cattle carried the *EHEC-hlyA* gene.

Pigs were included in this study as pork is a major source of meat consumed by the local population. We found that both the VTEC carriage and carcass contamination rates in healthy pigs were low. Our finding agrees with that of other investigators [23, 24], suggesting that pigs are not an important reservoir of VTEC. The O157:H7 serotype was not isolated from pigs and the predominant genotype of the porcine VTEC was *vt2e⁺ eaeA⁻ EHEC-hlyA⁻*. The role of VTEC in human diarrhoea in Hong Kong is lower than that in other countries [6, 31]. One reason may be the absence of *eaeA* in porcine and the majority of the bovine VTEC. Another may be the local preference for eating well-cooked meats and pork rather than beef.

Non-O157 VTEC carrying the virulence factors *eaeA* and *EHEC-hlyA* were serotyped (Table 3). One-third of these strains belonged to serotype O172, which has been isolated from one patient with HC in America [32] but was infrequently encountered in both humans and animals elsewhere [33, 34]. The first reported O172 strains harboured *vt2* as did the O172 isolates described here. O15 is a common serotype in rabbit diarrhoea *E. coli* [35]. However, O15 strains can also be encountered in EHEC and are associated with cattle infection [36]. Serotype O91 is known to cause HUS in humans [27] and this serotype has been reported in healthy and diseased animals [37]. The O84, O110 and O121 serotypes have been isolated in diarrhoeal calves and humans [37–39]. This group of VTEC isolates may be potential intestinal pathogens causing a human public health hazard in Hong Kong and they may go unrecognized in human clinical specimens if reliance is placed solely on sorbitol–MacConkey agar for screening VTEC isolates. This, together with the changing dietary habits of the population reinforces the need for continued vigilance for outbreaks of VTEC in the humans.

ACKNOWLEDGEMENTS

We thank Wong Ka-wing for his excellent assistance, as well as Martin Tsang and the staff of the School of Professional and Continual Education, University of Hong Kong. We also thank Dr Karl Bettelheim from the Department of Microbiology and Immunology, University of Melbourne, Melbourne, Australia for serotyping the VTEC strains and Dr N. A. Strockbine from the Centers for Disease Control and Prevention, Atlanta, GA, USA, for providing the standard VTEC strains. The cooperation of the staff at the Government abattoir is also gratefully acknowledged. This work was supported by a grant from the Hong Kong Research Grants Council (HKU 7314/97M) and a SPACE Research Grant Award (21386308.03982.70300.420.01).

REFERENCES

- 1 Mainil J. Shiga/verocytotoxins and Shiga/verotoxigenic *Escherichia coli* in animals. *Vet Res* 1999; **30**: 235–57.
- 2 Nataro JP, Kaper JB. Diarrheagenic *Escherichia coli*. *Clin Microbiol Rev* 1998; **11**: 142–201.
- 3 Sandhu KS, Clarke RC, Gyles CL. Hemolysin phenotypes and genotypes of *eaeA*-positive and *eaeA*-negative bovine verotoxigenic *Escherichia coli*. *Adv Exp Med Biol* 1997; **412**: 295–302.
- 4 Chapman PA, Siddons CA, Gerdan MA, Harkin MA. A 1-year study of *Escherichia coli* O157 in cattle, sheep, pigs and poultry. *Epidemiol Infect* 1997; **119**: 245–50.
- 5 Anonymous. Food safety. Enterohaemorrhagic *Escherichia coli* infection. *Wkly Epidemiol Rec* 1996; **71**: 267–8.
- 6 Blanco M, Blanco JE, Blanco J, et al. Prevalence and characteristics of human and bovine verotoxigenic *Escherichia coli* strains isolated in Galicia (north-western Spain). *Eur J Epidemiol* 1996; **12**: 13–9.
- 7 Miyao Y, Kataoka T, Nomoto T, Kai A, Itoh T, Itoh K. Prevalence of verotoxin-producing *Escherichia coli* harbored in the intestine of cattle in Japan. *Vet Microbiol* 1998; **61**: 137–43.
- 8 Wilson JB, McEwen SA, Clarke RC, et al. Distribution and characteristics of verocytotoxigenic *Escherichia coli* isolated from Ontario dairy cattle. *Epidemiol Infect* 1992; **108**: 423–39.
- 9 Information Services Department, Hong Kong SAR Government. Hong Kong, a New Era. [Online] <http://www.info.gov.hk/isd/hk98/ch11/e11z.htm>. 1998.
- 10 Karch H, Meyer T. Single primer pair for amplifying segments of distinct Shiga-like-toxin genes by polymerase chain reaction. *J Clin Microbiol* 1989; **27**: 2751–7.
- 11 Karch H, Meyer T. Evaluation of oligonucleotide probes for identification of shiga-like-toxin-producing *Escherichia coli*. *J Clin Microbiol* 1989; **27**: 1180–6.

- 12 Gannon VP, Teerling C, Masri SA, Gyles CL. Molecular cloning and nucleotide sequence of another variant of the *Escherichia coli* Shiga-like toxin II family. *J Gen Microbiol* 1990; **136**: 1125–35.
- 13 Yam WC, Robins-Browne RM, Lung ML. Genetic relationships and virulence factors among classical enteropathogenic *Escherichia coli* serogroup O126 strains. *J Med Microbiol* 1994; **40**: 229–35.
- 14 Paton AW, Paton JC. Detection and characterization of Shiga toxicogenic *Escherichia coli* by using multiplex PCR assays for *stx*₁, *stx*₂, *eaeA*, enterohemorrhagic *E. coli* *hlyA*, *rfb*₀₁₁₁, and *rfb*₀₁₅₇. *J Clin Microbiol* 1998; **36**: 598–602.
- 15 Louie M, de Azavedo J, Clarke R, et al. Sequence heterogeneity of the *eae* gene and detection of verotoxin-producing *Escherichia coli* using serotype-specific primers. *Epidemiol Infect* 1994; **112**: 449–61.
- 16 Cameron DN, Khambaty FM, Wachsmuth IK, Tauxe RV, Barrett TJ. Molecular characterization of *Vibrio cholerae* O1 strains by pulsed-field gel electrophoresis. *J Clin Microbiol* 1994; **32**: 1685–90.
- 17 Stephens PJ, Joynson JA. Direct inoculation into media containing bile salts and antibiotics is unsuitable for the detection of acid/salt stressed *Escherichia coli* O157:H7. *Lett Appl Microbiol* 1998; **27**: 147–51.
- 18 Pradel N, Livrelli V, De Champs C, et al. Prevalence and characterization of Shiga toxin-producing *Escherichia coli* isolated from cattle, food, and children during a one-year prospective study in France. *J Clin Microbiol* 2000; **38**: 1023–31.
- 19 Tokhi AM, Peiris JS, Scotland SM, Willshaw GA, Smith HR, Cheasty T. A longitudinal study of Vero cytotoxin producing *Escherichia coli* in cattle calves in Sri Lanka. *Epidemiol Infect* 1993; **110**: 197–208.
- 20 Chapman PA, Siddons CA, Cerdan Malo AT, Harkin MA. A one year study of *Escherichia coli* O157 in raw beef and lamb products. *Epidemiol Infect* 2000; **124**: 207–13.
- 21 Karch H, Meyer T, Russmann H, Heesemann J. Frequent loss of Shiga-like toxin genes in clinical isolates of *Escherichia coli* upon subcultivation. *Infect Immun* 1992; **60**: 3464–7.
- 22 Fischer J, Maddox C, Moxley R, Kinden D, Miller M. Pathogenicity of a bovine attaching effacing *Escherichia coli* isolate lacking Shiga-like toxins. *Am J Vet Res* 1994; **55**: 991–9.
- 23 Beutin L, Geier D, Steinruck H, Zimmermann S, Scheutz F. Prevalence and some properties of verotoxin (Shiga-like toxin)-producing *Escherichia coli* in seven different species of healthy domestic animals. *J Clin Microbiol* 1993; **31**: 2483–8.
- 24 Borie CF, Monreal Z, Martinez J, Arellano C, Prado V. Detection and characterization of enterohaemorrhagic *Escherichia coli* in slaughtered cattle. *Zentralblatt Fur Veterinarmedizin – Reihe B* 1997; **44**: 273–9.
- 25 Boerlin P, McEwen SA, Boerlin-Petzold F, Wilson JB, Johnson RP, Gyles CL. Associations between virulence factors of Shiga toxin-producing *Escherichia coli* and disease in humans. *J Clin Microbiol* 1999; **37**: 497–503.
- 26 Wong SSY, Yam WC, Leung PHM, Woo PCY, Yuen KY. Verocytotoxin-producing *Escherichia coli* infection: The Hong Kong experience. *J Gastroen Hepatol* 1998; **13** (Suppl.): S289–S293.
- 27 Bonnet R, Souweine B, Gauthier G, et al. Non-O157:H7 Stx2-producing *Escherichia coli* strains associated with sporadic cases of hemolytic-uremic syndrome in adults. *J Clin Microbiol* 1998; **36**: 1777–80.
- 28 Willshaw GA, Scotland SM, Smith HR, Rowe B. Properties of Vero cytotoxin-producing *Escherichia coli* of human origin of O serogroups other than O157. *J Infect Dis* 1992; **66**: 797–802.
- 29 Stephan R, Ragetti S, Untermann F. Prevalence and characteristics of verotoxin-producing *Escherichia coli* (VTEC) in stool samples from asymptomatic human carriers working in the meat processing industry in Switzerland. *J Appl Microbiol* 2000; **88**: 335–41.
- 30 Beutin L, Prada J, Zimmermann S, Stephan R, Orskov I, Orskov F. Enterohemolysin, a new type of hemolysin produced by some strains of enteropathogenic *E. coli* (EPEC). *Zentralblatt Fur Bakteriologie* 1988; **267**: 576–88.
- 31 Beutin L, Aleksic S, Zimmermann S, Gleier K. Virulence factors and phenotypical traits of verotoxigenic strains of *Escherichia coli* isolated from human patients in Germany. *Med Microbiol Immun* 1994; **183**: 13–21.
- 32 Orskov I, Wachsmuth IK, Taylor DN, et al. Two new *Escherichia coli* O groups: O172 from ‘Shiga-like’ toxin II-producing strains (EHEC) and O173 from enteroinvasive *E. coli* (EIEC). *APMIS* 1991; **99**: 30–2.
- 33 Sandhu KS, Clarke RC, McFadden K, et al. Prevalence of the *eaeA* gene in verotoxigenic *Escherichia coli* strains from dairy cattle in Southwest Ontario. *Epidemiol Infect* 1996; **116**: 1–7.
- 34 Tamura K, Sakazaki R, Murase M, Kosako Y. Serotyping and categorisation of *Escherichia coli* strains isolated between 1958 and 1992 from diarrhoeal diseases in Asia. *J Med Microbiol* 1996; **45**: 353–8.
- 35 Inman LR, Cantey JR, Formal SB. Colonization, virulence, and mucosal interaction of an enteropathogenic *Escherichia coli* (strain RDEC-1) expressing shigella somatic antigen in the rabbit intestine. *J Infect Dis* 1986; **154**: 742–51.
- 36 Wada Y, Nakazawa M, Kubo M. Natural infection with attaching and effacing *Escherichia coli* (O15) in an adult cow. *J Vet Med Sci* 1994; **56**: 151–2.
- 37 Caprioli A, Tozzi AE. Epidemiology of shiga toxin-producing *Escherichia coli* infections in continental Europe. In: Kaper JB, O’Brien AD, eds. *Escherichia coli* O157:H7 and other shiga toxin-producing *E. coli* strains. Washington, DC: American Society for Microbiology, 1998: 38–48.
- 38 Wieler LH, Vieler E, Erpenstein C, et al. Shiga toxin-producing *Escherichia coli* strains from bovines: association of adhesion with carriage of *eae* and other genes. *J Clin Microbiol* 1996; **34**: 2980–4.
- 39 Bettelheim KA, Brown JE, Lolekha S, Echeverria P. Serotypes of *Escherichia coli* that hybridized with DNA probes for genes encoding Shiga-like toxin I, Shiga-like toxin II, and serogroup O157 enterohemorrhagic *E. coli* fimbriae isolated from adults with diarrhea in Thailand. *J Clin Microbiol* 1990; **28**: 293–5.