

Accumulation studies on Amundsenisen, Dronning Maud Land, Antarctica, by means of tritium, dielectric profiling and stable-isotope measurements: first results from the 1995–96 and 1996–97 field seasons

HANS OERTER,¹ WOLFGANG GRAF,² FRANK WILHELMS,¹ ANDREAS MINIKIN,¹ HEINZ MILLER¹

¹Alfred Wegener Institute for Polar and Marine Research, P.O. Box 120161, D-27515 Bremerhaven, Germany,

²GSF-Forschungszentrum für Umwelt und Gesundheit, Postfach 1129, D-85758, Oberschleissheim, Germany

ABSTRACT. The paper focuses on studies of snow-pit samples and shallow firn cores taken during the 1995–96 and 1996–97 field seasons at Amundsenisen, Dronning Maud Land, Antarctica. The dating of the firn is based on the artificial tritium distribution in the snow cover and on several reference horizons identified by electrical measurements. The early 1964 through 1965 horizon is marked by the deposition of sulfate released to the atmosphere during the eruption of the Agung volcano in March 1963; this horizon was detected by dielectric profiling and electrical conductivity measurements; the proof by chemical analysis has still to be seen. At the ten investigated sites on Amundsenisen the 1964–65 horizon was identified 4.1–5.7 m below the surface. The accumulation rates on Amundsenisen are 41–91 kg m⁻² a⁻¹. The cores are up to 100 years old. A relationship between isotope content and the mean air temperature on a regional scale can be based on measurements of firn temperature at 10 m depth at the drilling sites. Between Neumayer station at the coast and Heimefrontfjella, the temperature gradient of the deuterium content is 9.6‰ K⁻¹. South of Heimefrontfjella, on the Amundsenisen plateau, it is only 5.5‰ K⁻¹. Time series of yearly accumulation rates show no significant trend. For the isotope records a significant trend to higher values with gradients of 0.1–0.2 ‰ H‰ a⁻¹ can be seen in five of the ten time series.

INTRODUCTION

The European Project for Ice Coring in Antarctica (EPICA) focuses on two deep ice-core drillings in two regions of Antarctica: the Dome C (Concordia) area in the Indian/Pacific sector, and Dronning Maud Land (DML) in the Atlantic sector of Antarctica. The inland ice of DML remains a little-explored part of the Antarctic ice sheet. An intensive pre-site survey program was therefore set up, comprising ice-thickness measurements by airborne radio-echo sounding surveys, ice-flow measurements by global positioning system (GPS) and glaciological investigations on shallow firn cores and 100 m ice cores. These core studies will reveal the accumulation distribution across Amundsenisen and the accumulation and climate history during the last millennium. Germany, Norway, Sweden, The Netherlands and the United Kingdom have been engaged in traverse work and airborne surveys since the 1995–96 field season. This paper deals with the German traverse work starting at Neumayer station at the coast and leading to Amundsenisen. Results of the airborne radio-echo sounding surveys are described by Steinhage and others (1999).

AREA UNDER INVESTIGATION

The area for the EPICA pre-site survey in DML is Amundsenisen (Fig. 1) which includes the region between 72° and 78° S, and between 15° W and 20° E. The local summit of DML lies outside the area under investigation, to the east. It is Dome F

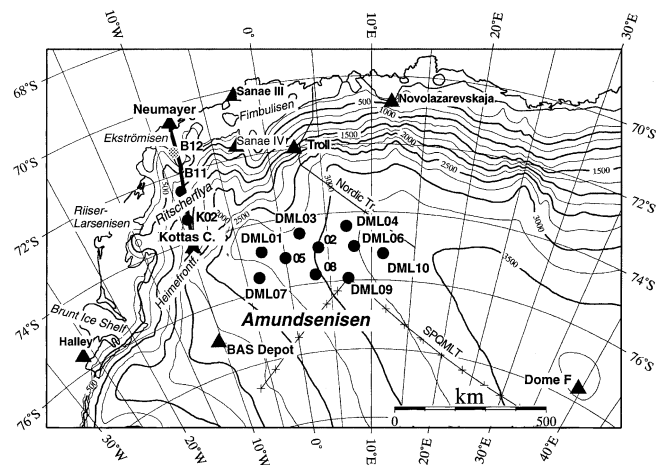


Fig. 1. Map of DML. The area of the EPICA pre-site survey on Amundsenisen includes the region between 72° and 78° S, and between 15° W and 20° E. The map shows the locations visited by German expeditions (filled circles). The traverse route from Neumayer southwards to Kottas camp is indicated by a thick line. In addition, the map shows the route of the SPQML traverse 1964–68 (line with crosses; see text) and the route of a Nordic traverse in 1996–97 passing the Troll station. Stations and camp sites are marked by filled triangles. Elevation data based on European Remote-sensing Satellite (ERS-1) altimeter by courtesy of J. Bamber, University of Bristol, U.K.

Table 1. Coordinates for locations on Ekströmisen and Ritscherflya visited and sampled during the German Ekström traverse in 1986–87

Location	Latitude	Longitude	Orthom. height m a.s.l.	Period	Accumulation rate kg m ⁻² a ⁻¹	δ ¹⁸ O ‰	10 m temperature °C
GvN	70° 36.17' S	8° 21.85' W	30	1977–81	340 ± 20	-18.8 ± 0.8	-17.0
km40	70° 56.90' S	8° 31.23' W	57	1971–86	294 ± 76	-23.0 ± 2.2	-18.1
Bl2	71° 14.17' S	8° 31.98' W	70	1961–86	228 ± 60	-24.5 ± 1.6	-18.3
km90	71° 24.10' S	8° 20.83' W	75	1969–86	266 ± 64	-24.0 ± 1.3	-18.3
km125	71° 41.03' S	8° 30.00' W	113	1982–86	205 ± 124	-25.9 ± 2.4	-18.3
km143	71° 49.92' S	8° 36.68' W	298	1972–86	229 ± 69	-24.9 ± 2.4	-18.9
km160	71° 59.00' S	8° 43.48' W	559	1969–86	277 ± 86	-24.9 ± 1.9	-19.7
km180	72° 9.73' S	8° 49.42' W	788	1973–86	364 ± 68	-26.0 ± 2.1	-21.7
Bl0, Bl1	72° 30.28' S	9° 5.58' W	941	1970–86	53	-26.1 ± 2.1	-21.6
km270	72° 55.40' S	9° 40.42' W	1040	1970–86	46	-27.6 ± 1.8	-22.0

Notes: Elevation data were determined by trigonometric levelling along the traverse line by B. Ritter and A. Karsten. Geographical data are compiled after Miller and Oerter (1990), accumulation and isotope values after Moser and Reinwarth (unpublished).

(77° 19.02' S, 39° 42.2' E; 3810 m a.s.l.), where a 2503 m long ice core was recovered in 1995–96 by the Japanese Antarctic Research Expedition (JARE) (Dome-F Deep Coring Group, 1998). Two triple points on the main ice divide, approximately located at 75° S and the Greenwich meridian and at 75° S, 15° E, separate the ice flowing towards the Filchner–Ronne Ice Shelf and towards the smaller ice shelves between 25° W and 20° E. Within the area under investigation the surface elevation of Amundsenisen is 2000–3500 m a.s.l. The 2000 m contour line follows approximately a series of mountain ranges (starting with Heimefrontfjella in the west) which separate Amundsenisen from the lower inland ice regions to the north, such as Ritscherflya. Major outlets from Amundsenisen in the west are Stancomb–Wills Ice Stream, draining into the Brunt Ice Shelf, and Jutulstraumen, draining into Fimbulisen. The catchment areas of the main ice streams feeding the Filchner Ice Shelf extend as far north as the main ice divide at 75° S.

Until the beginning of the EPICA pre-site survey, Amundsenisen was a little-known part of Antarctica. The Antarctic folio of Drewry (1983) reveals only a few points where measurements were available to enable maps of ice thickness, surface and bedrock topography to be drawn. The South Pole–Queen Maud Land traverse (SPQMLT; 1964–68) started with a reconnaissance of DML (e.g. Picciotto and others, 1971). The northernmost point reached by this traverse was 75° 56' S, 7° 13' E at 3210 m a.s.l., in the south of the EPICA area; the southernmost German point DML09 (Fig. 1) was established here. Picciotto and others (1971) reported a mean annual temperature of -48.5°C (a value 0.6 K lower than recent measurements; cf. Table 3) and an accumulation rate of 51 kg m⁻² a⁻¹ (AD 1955–68) based on radio-isotope measurements (a value not significantly higher than the present-day value). Rundle (1971) had previously determined a much higher value of 91 kg m⁻² a⁻¹ by evaluating only snow-pit stratigraphy. Values of near-surface density reported by Picciotto and others (1971) and Rundle (1971) are 357 and 340 kg m⁻³, respectively.

During the 1991–92 field season a Swedish traverse crossed Ritscherflya towards Amundsenisen, and a 20.1 m deep firn core was recovered at 75° S, 2° E at 2900 m a.s.l. (Isaksson and others, 1996). This covered the period 1865–1991 and yielded an accumulation rate of 77 kg m⁻² a⁻¹, a 10 m firn temperature of -43.8°C and a mean δ¹⁸O value of -44.8‰. The drill location lies approximately halfway

between the German points DML05 and DML02 (Fig. 1). In 1993–94 another Swedish traverse operated a ground-based snow radar on Amundsenisen along a 400 km long east–west profile, 50 km south of 75° S, finishing at the same longitude as the above-mentioned Swedish firn-core site (Richardson and others, 1997). The study aimed to reveal recent accumulation variations. A tentative value for the mean accumulation rate on the plateau of 61 kg m⁻² a⁻¹ is reported.

East of the EPICA region is the investigation area of JARE. The glaciological folio published by the National Institute of Polar Research (1997) contains a map sheet with snow-accumulation data.

The German EPICA traverse route starts at Neumayer station (70° 39.0' S, 8° 15.4' W) and leads across Ekströmisen and Ritscherflya. The Kottas base camp (74° 12.3' S, 9° 44.8' W) was established in front of Kottasberge, Heimefrontfjella, during the 1995–96 and 1996–97 field seasons. From there the two Dornier Do-228-100 aircraft *Polar 2* and *Polar 4* were used to carry out airborne surveys as well as to give support for glaciological fieldwork on Amundsenisen.

Table 2. Coordinates for locations visited and sampled during EPICA DML field seasons 1995–96 and 1996–97

Location	Latitude	Longitude	Elevation WGS84* m
Neumayer	70° 39.71' S	8° 15.02' W	40
Pegelfeld Süd	70° 42.40' S	8° 25.60' W	45
B36	71° 39.06' S	8° 34.93' W	114
Abzwg. Wasa	72° 57.04' S	9° 40.67' W	1050
FB96K02	73° 21.53' S	9° 42.00' W	1291
Trasse 18	74° 10.45' S	9° 44.20' W	1439
Kottas camp	74° 12.30' S	9° 44.50' W	1452
DML01	74° 51.30' S	2° 33.00' W	2831
DML02	74° 58.10' S	3° 55.11' E	3027
DML03	74° 29.97' S	1° 57.67' E	2855
DML04	74° 23.94' S	7° 13.05' E	3179
DML05	75° 00.15' S	0° 00.44' E	2892
DML06	75° 00.04' S	8° 00.32' E	3246
DML07	75° 34.89' S	3° 25.82' W	2680
DML08	75° 45.17' S	3° 16.97' E	2971
DML09	75° 56.00' S	7° 12.78' E	3156
DML10	75° 13.00' S	11° 21.00' E	3364

* World Geodetic System 1984 ellipsoid.

Table 3. Compilation of firn cores and snow pits sampled during the years 1996–97 (for locations see Fig. 1 and Table 1)

Location	Date	Label of core/pit	Orthom. height	10 m temp.	Total depth	Density 0 ≤ 2 m	δ ¹⁸ O	δ ² H	Accum. rate	Period
	dd/mm/yy		m a.s.l.	°C	m	kg m ⁻³	‰	‰	kg m ⁻² a ⁻¹	
Neumayer	02/01/96	SSN95	28	-16.5	1.9	430 ± 47				
	17/03/97	SS9722		-16.5	1.8	412 ± 33				
Pegelfeld Süd B36	22/02/97	SS9721	33	-16.7	2.0	425 ± 33				
	24/12/96	SS9701	104		2.0	462 ± 48				
Abzwg. Wasa FB96K02	26/12/96	SS9702	1040		2.0	412 ± 46				
	12/02/96	FB96K02	1281	-24.7	10.5		-30.2 ± 1.5	-235 ± 14	140 ± 27	1964–95
Trasse 18 Kottas camp	27/12/96	SS9703			2.0	394 ± 36				
	18/02/97	SS9718	1427		2.1	348 ± 46	-32.6 ± 2.9	-256 ± 22	131 ± 46	1991–96
DML07	31/12/96	FBK01	1439	-25.4	6.5		-32.3 ± 1.9	-252 ± 15	125 ± 16	1962–95
	07/02/96	SS96K01			2.0	386 ± 28			138 ± 26	1991–95
	10/01/97	SS9707			1.6	397 ± 26	-33.0 ± 3.5		139 ± 44	1993–96
DML01	01/01/97	FB97DML07	2669	-44.3	12.2		-44.5 ± 1.6	-348 ± 13	57 ± 16	1908–96
	20/12/97	B31			115.1				57	1816–1997
	01/01/97	SS9704			1.8	326 ± 20			55 ± 14	1989–96
	19/12/97	SS9803			2.0	333 ± 50	-45.0 ± 1.3	-351 ± 10	60 ± 21	1985–97
DML03	05/02/96	FB96DML01	2817	-43.8	10.3		-43.9 ± 1.6	-341 ± 13	41 ± 10	1895–1995
	13/01/97	FB97DML01			5.7				46 ± 14	1964–96
DML05	13/01/97	SS9708			1.5	326 ± 19	-44.0 ± 2.4			
	05/01/97	FB97DML03	2843	-42.2	11.7		-43.7 ± 1.9	-345 ± 15	91 ± 29	1941–96
	02/01/98	FB9809			41.5				87	1816–1997
DML08	05/01/97	SS9705			1.8	340 ± 38			69 ± 15	1990–96
	02/01/98	SS9807			1.2	352 ± 58	-44.0 ± 1.8	-347 ± 14	88 ± 25	1994–97
	16/01/97	FB97DML05	3161	-44.5	11.2		-44.7 ± 2.0	-352 ± 16	71 ± 21	1930–96
	27/12/97	B32			149.9				61	1816–1997
DML02	16/01/97	SS9709			2.0	348 ± 39	-43.3 ± 4.6		65	1992–96
	25/12/97	SS9805			2.0	343 ± 22	-44.2 ± 1.8	-346 ± 14	68 ± 19	1988–97
DML09	22/01/97	FB97DML08	2962	-44.6	11.5		-47.0 ± 2.2	-367 ± 18	60 ± 19	1919–96
	22/01/97	SS9706			2.0	339 ± 17	-46.1 ± 3.9	-366 ± 32		
DML04	05/02/96	FB96DML02	3014	-44.4	10.8		-45.3 ± 2.1	-353 ± 17	59 ± 14	1919–95
	14/01/97	SS9710			2.0	337 ± 14	-45.4 ± 2.2		59	
DML06	28/01/97	FB97DML09	3145	-47.9	11.2		-48.6 ± 2.4	-379 ± 20	45 ± 12	1897–1996
	28/01/97	SS9713			1.0	318 ± 16	-47.8 ± 3.3	-376 ± 26		
DML10	24/01/97	FB97DML04	3161	-45.9	11.8		-47.1 ± 1.7	-369 ± 14	53 ± 15	1905–96
	24/01/97	SS9711			1.0	357 ± 71	-46.6 ± 3.4	-368 ± 27		
DML07	26/01/97	FB97DML06	3230	-47.5	11.9		-47.3 ± 2.0	-370 ± 16	50 ± 14	1899–1996
	26/01/97	SS9712			1.0	351 ± 37	-49.2 ± 2.3	-388 ± 17		
DML08	30/01/97	FB97DML10	3349	-48.7	11.3		-49.3 ± 1.9	-386 ± 15	47 ± 11	1900–96
	30/01/97	SS9714			1.0	326 ± 45	-50.5 ± 3.6	-396 ± 28		

Notes: In addition to the mean value, the scatter of the annual values for each core or pit is given as a measure of the homogeneity of the snow cover. Accumulation rates are given with respect to dating by tritium content for firn cores, significant peaks in DEP profiles coinciding with the eruptions of Agung (1964 firn layer) and Tambora (1816 firn layer; only available so far for three cores drilled in the 1997–98 season), and sulfate concentrations for snow pits covering the last decade. The accumulation-rate error is mainly determined by uncertainty in density. For the 1997 pits and cores it is between ±3% and ±10%; for the three cores from the 1997–98 season it is ±3%. The WGS84 elevations (Table 2) were converted with the OSU91A model to orthometric heights (<http://gibs.leipzig.ifag.de>).

It was only in the 1997–98 field season that a ground traverse ascended from the base camp across a small ice stream in the east of Heimefrontfjella to Amundsenisen, traversing as far as 75° S, 7.5° E.

In 1986–87 a traverse group travelled 270 km south from Neumayer station drilling shallow firn cores (Miller and Oerter, 1990; Moser, 1991). Data from this expedition (Table 1), supplemented by more recent results, allow us to link the findings from Amundsenisen and from the coastal area. Coordinates of the locations visited in 1995–96 and 1996–97 are compiled in Table 2.

In general, the snow surface on Amundsenisen looks smooth, and wind-formed structures seldom jut out of the surface more than 10–15 cm. This indicates that the mean wind velocities are moderate. The snow surface is very suitable for operating small aircraft, but over wide areas it is too soft to carry heavy sledges. Around DML01 and westward the surface is rougher than to the east. In general, the appearance of the surface suggests that the snow layers are

not reworked heavily by wind action, and that the annual snow layers will be detectable.

SNOW-PIT SAMPLES AND FIRN CORES

The results presented in this paper are based on snow-pit studies and shallow firn cores recovered during the 1995–96 and 1996–97 field seasons. As access to all points on Amundsenisen was possible only by aircraft, the time available at each point was limited to 4–5 hours. Each point was marked by an aluminium stake used for GPS measurements, a 10–12 m deep firn core was drilled and a snow pit 1–1.5 m deep was excavated and sampled. After the drilling, a thermistor string was inserted into the borehole and left behind for re-readings in subsequent years. To ensure that the thermistors were completely adjusted to the surrounding firn temperature, only the re-readings of the 1997–98 season (Table 3) are used in this paper.

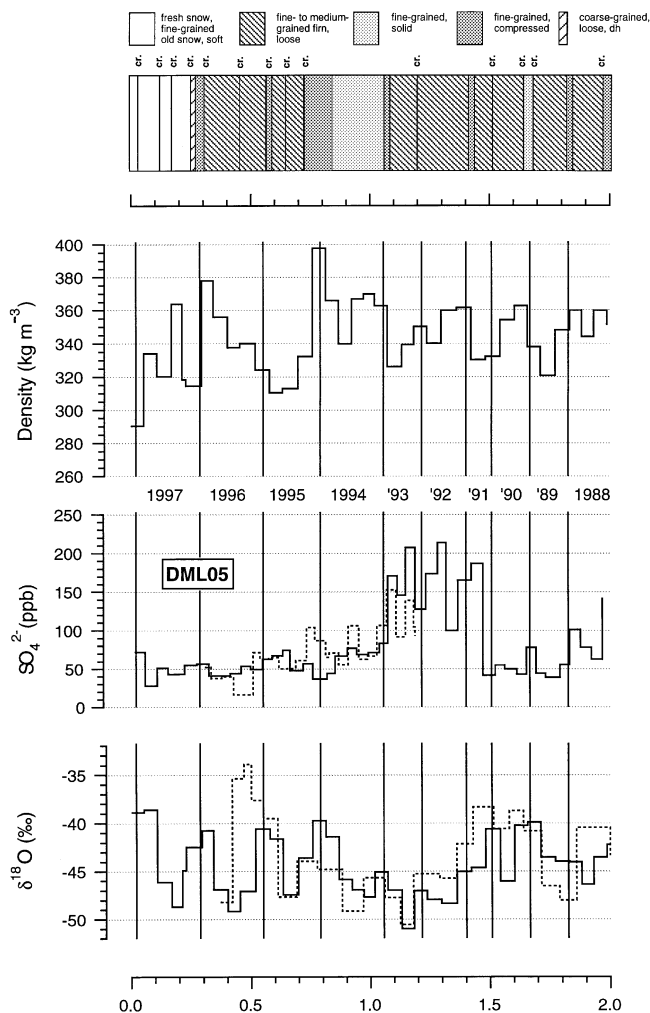


Fig. 2. Snow-pit studies on Amundsenisen at DML05. Results from two pits sampled in January and December 1997 are shown with ¹⁸O content (dashed line January 1997; solid line December 1997), sulfate concentration (dashed line January 1997; full line December 1997) and density (December 1997). In addition, stratigraphic features for the December 1997 pit (personal communication from G. Patzelt, 1998) are plotted. cr.: crust.

The snow pits (Table 3) were used for density measurements and sampled for measurements of ²H and ¹⁸O content as well as major-ions analysis. Unfortunately, the depth resolution for some pit samples was too coarse to resolve annual layers.

For the firn cores (Table 3) the electrical properties were determined by non-destructive methods: dielectric profiling (DEP) (Wilhelms and others, 1998) and electrical conductivity measurements (ECMs) in the cold laboratory. Density was measured from the weight and volume of single core pieces, averaging over 30–80 cm lengths, and for some cores, in high depth resolution, by applying gamma-density measurements (Gerland and others, 1999). After the non-destructive measurements, the cores were cut for further analysis of tritium, ^δ2H and ^δ18O and major ions. The remaining parts of the cores are stored at the Alfred Wegener Institute (AWI).

RESULTS

Snow pits

The snow-pit studies reveal the structure of the firn layering

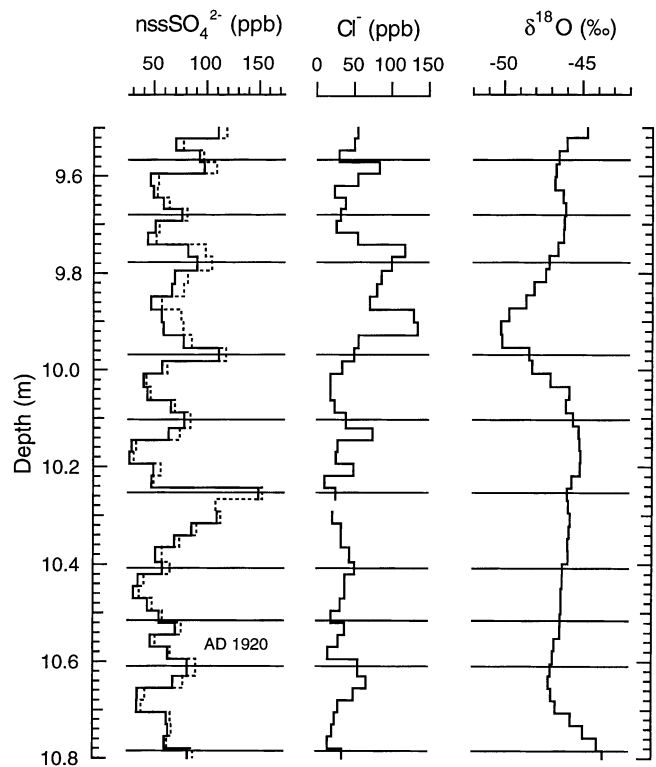


Fig. 3. Firn core at DML02, January 1996: profiles of non-sea-salt sulfate concentrations (total sulfate dotted), chloride and ¹⁸O content in the depth interval 9.5–10.8 m, corresponding to the period 1919–28. Each sample was 2.5 cm long. Annual layers are indicated.

on Amundsenisen. One finds characteristic crusts 1–2 mm thick which separate single firn layers with a typical spacing of 10–25 cm. These crusts may represent a former wind-pressed snow surface and probably indicate the late-winter snow surface. They can also be recognized in the shallow firn cores. A detailed stratigraphic description of the firn layers is difficult, time-consuming and not always unambiguous, and the results available so far are insufficient for precise dating of the pits. The chemistry of the firn layers is a more helpful tool for dating than the isotope content. From direct atmospheric observations at Neumayer station it is known that the aerosol biogenic sulfur components, non-sea-salt sulfate and methanesulfonate, show a distinct seasonal cycle with maximum concentrations in the austral summer months (Minikin and others, 1998). In coastal Antarctic areas this is clearly reflected in the chemical profiles of firn cores. On Amundsenisen, in spite of the relatively low accumulation rates, sulfate concentrations still show a regular pattern with peaks in summer layers, which allows for annual layer counting. The baseline concentration of total sulfate is 40–100 ppb (Figs 2 and 3). In all sampled snow pits a snow layer with peak values of 180–250 ppb is observed, which was assigned to precipitation in the years 1991–93. It may correspond to enhanced summer non-sea-salt sulfate aerosol concentrations at Neumayer station reported for the summers 1991–92 and particularly 1992–93 (Minikin and others, 1998). The accumulation rates for snow pits given in Table 3 were derived from stratigraphical information including the sulfate profiles. Figure 2 gives an example for a snow pit, displaying the stratigraphy, density, sulfate concentration and ¹⁸O content at DML05.

From this study the mean near-surface (≤2 m) density on

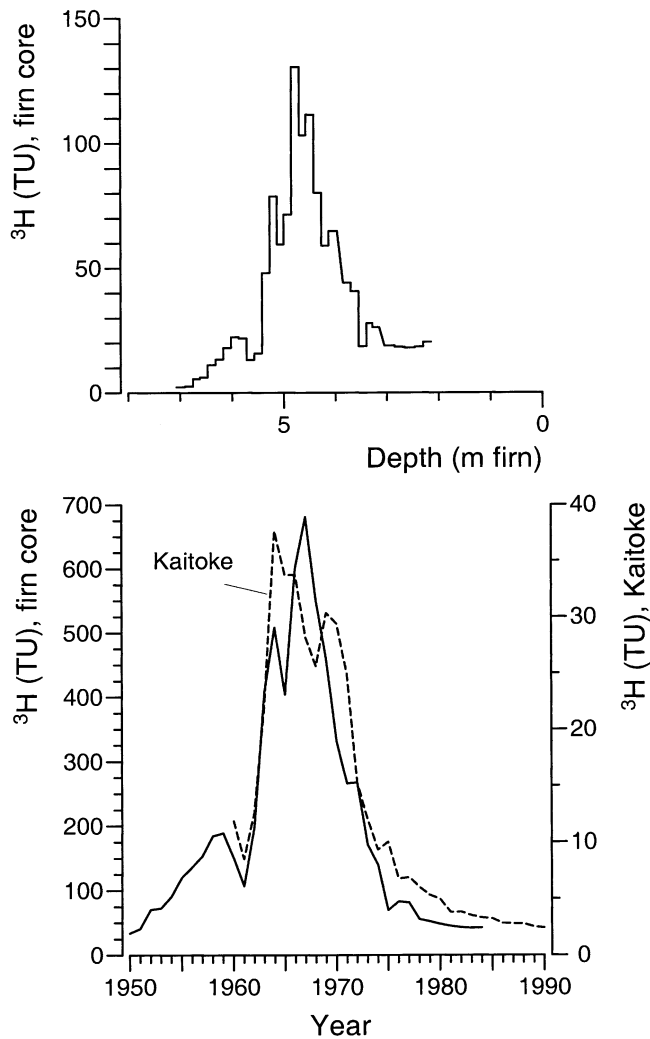


Fig. 4. Firn core at DML07, 1996–97: example of dating of firn cores by means of tritium content (TU, tritium units). The tritium contents of precipitation at DML07 are calculated from the profile data with an accumulation rate of $57 \text{ kg m}^{-2} \text{ a}^{-1}$. For comparison the tritium contents of precipitation at the station Kaitoke, New Zealand, are given (dashed line). The data for Kaitoke are taken from the International Atomic Energy Agency global network of isotopes in precipitation (GNIP) at <http://www.iaea.or.at>.

Amundsenisen (Table 3) yields a value of $338 \pm 12 \text{ kg m}^{-3}$, much lower than on the ice shelf ($432 \pm 21 \text{ kg m}^{-3}$) and on Ritscherflya ($387 \pm 35 \text{ kg m}^{-3}$). Taking only the density values on Amundsenisen, no strong correlation was found with the measured 10 m firn temperature.

Dating of the firn cores

For dating firn cores one can use seasonal stratigraphy or absolute time markers produced, for example, by volcanic events or by the fallout of radio isotopes in the course of nuclear weapons tests. Dating by seasonal signals requires subsamples with high depth resolution. For Amundsenisen, seasonal signals for stable isotopes could not be detected in 2.5 cm long subsamples, but clear seasonal non-sea-salt sulfate peaks were evident (Fig. 3). It should therefore be possible to date firn cores with high-resolution analysis methods like continuous flow analysis or continuous measurements based on electrical properties which vary with changing acidity. One major problem with these methods, affecting the accu-

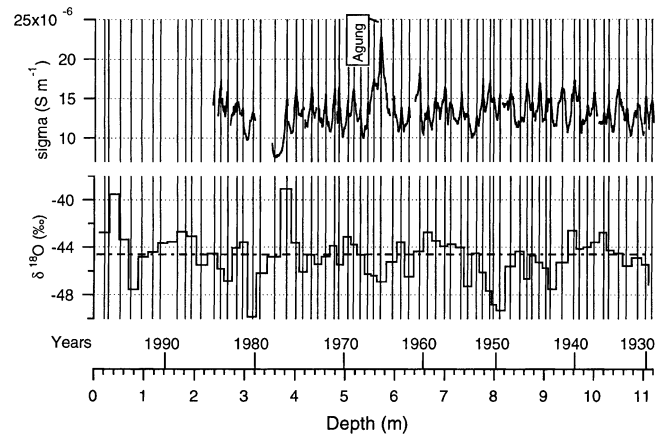


Fig. 5. Firn core at DML05, 1996–97: DEP record and ^{18}O content plotted vs depth. Annual layers are indicated by lines.

racy of the determined accumulation rates, is the quality of firn cores in the upper 3–4 m depth. Losses of core material within soft, coarse-grained layers and breaks at depth-horizon cause errors in core length and a hiatus in the record. For the cores reported here the core length had to be extended by 5–12% down to 5 m depth to adapt the recovered core to the measured borehole depth.

Tritium measurements

A first method for dating, which has also been used on the Filchner–Ronne Ice Shelf (Graf and others, 1999), is based on depth profiles of the tritium content. These can be used to date firn cores, because the time series of artificial ^3H concentrations in precipitation are quite similar throughout the Southern Hemisphere. This means, for example, that the typical distribution at Kaitoke, New Zealand, must also be preserved in the snow cover on Amundsenisen. Best-fit depth–time scales were searched by trial and error, in order to transform the measured depth profiles to time series similar to that at Kaitoke (Table 3). An example of this method is given for DML07 in Figure 4.

Because of the higher accumulation rates on the Filchner–Ronne Ice Shelf (Graf and others, 1999), the results there are somewhat better than on Amundsenisen.

DEP measurements

Besides radio isotopes volcanic horizons are absolute time markers in the firn cores which can be detected by chemical analysis and ECMs. For this study we used DEP (Wilhelms and others, 1998) and focused on a characteristic peak which could be ascribed to the Agung eruption in 1963. Such a peak (Fig. 5) was detected in all cores except one (site DML03), and appears 4.1–5.7 m below the surface. The interpretation of this peak as being caused by a volcanic horizon has still to be confirmed by chemical analysis. However, using the depth–time scale of the tritium dating, the peak coincides with snow layers from 1964 and 1965, which was when the sulfuric acid attributed to the Agung eruption was deposited in central Antarctica (Legrand and Delmas, 1987). Despite the low annual accumulation rate, the high resolution of the DEP measurements also allows us, over long sections of the core, to interpret the variations seen in Figure 5 as seasonal signals. The annual layer boundaries, which were used to establish a depth–time scale for each core and to calculate

annual mean values of isotope content and accumulation rates, were determined by the peak values of the DEP profile. The mean accumulation rates deduced from the tritium dating for each core agree with the averaged annual accumulation rates determined by the DEP profile.

Spatial distribution of temperature, accumulation rates and isotopic content of near-surface layers

The mountain range Heimefrontfjella forms a steep step in the landscape and causes changes of the gradients of all parameters investigated in this paper. For example, the 10 m firn temperature decreases from -16.5°C at the coast to -25.4°C at Kottas camp at 1440 m a.s.l., an altitude gradient of 4.8 K km^{-1} ; from Kottas camp to DML01 with a gradient of 13.9 K km^{-1} ; and across Amundsenisen with a gradient of 7.7 K km^{-1} (Fig. 6).

After dating of the cores, accumulation rates were cal-

culated at DML01, $41\text{ kg m}^{-2}\text{ a}^{-1}$, does not fit in with this trend. The reason for this low-accumulation area is not yet clear. Most probably it is caused by wind erosion and not by low precipitation rates. This is indicated by the close relationship between temperature and accumulation rates ($dA/dT = 4.8\text{ kg m}^{-2}\text{ a}^{-1}\text{ K}^{-1}$, $r = 0.85$) and the exceptional nature of the values at site DML01.

Like the accumulation rates, the isotopic contents of the near-surface layers decrease inland, as would be expected based on many other investigations and the temperature distribution. The ^2H content decreases from -159‰ at Neumayer to -212‰ at km270 and drops further to -386‰ at DML10 on Amundsenisen. The deuterium excess values vary only in the small range 6–10‰. The decrease in ^2H from km180 to B11 may be reduced by a different build-up of the snow cover at these sites. From the calculated tritium inventory we have some evidence that at B11 in the last 30 years the winter precipitation is less preserved than the summer precipitation, probably due to the interplay of wind scouring and surface topography. The lowest inventory in the years 1960–77 (57 TU) was determined at this site compared with investigations on the Filchner–Ronne Ice Shelf and the recent study in DML.

Modelling the ^2H and ^{18}O contents

The temperature gradient of the ^2H contents between Neumayer station and Heimefrontfjella ($9.6 \pm 2.5\text{‰ K}^{-1}$) is comparable to the findings on the Ronne Ice Shelf (10.3‰ K^{-1} ; Graf and others, 1999). Including the value at Kottas camp site, the temperature gradient decreases for the area south of Heimefrontfjella on the Amundsenisen plateau ($5.5 \pm 0.3\text{‰ K}^{-1}$), and almost equals the value reported by Lorius and Merlivat (1977) for the area between Dumont d’Urville and Dome C (6.0‰ K^{-1}). Isaksson and others (1996) used a $\delta^{18}\text{O}$ temperature gradient of 1.16‰ K^{-1} (corresponding to 9.3‰ K^{-1}) to convert isotope variations to temperature variations for two firn cores, one on Ritscherflya and one on Amundsenisen (75°S , 2°E). This is comparable with the gradient found in this study for the area between the coast and Heimefrontfjella but might not be valid for the eastern plateau of Amundsenisen. Stenberg and others (1998) determined a gradient of 0.74‰ K^{-1} (corresponding to 5.9‰ K^{-1}) for the area above 2000 m a.s.l. which fits into our dataset. The $\delta^{18}\text{O}$ temperature gradient of 1.31‰ K^{-1} (10.5‰ K^{-1}) determined by Orheim and others (1986) for the Riiser–Larsenisen and Vestfjella area is very similar to the one reported by Hermichen and others (1990) with a value of 1.33‰ K^{-1} . Both values compare well with the gradient across Ekströmisen and Ritscherflya from this study.

The Rayleigh model can be used to understand the temperature gradient. To model both the ^2H and ^{18}O contents, we followed the idea of Jouzel and Merlivat (1984) that the isotope fractionation between the water vapor and the condensate is governed not only by isotopic equilibrium, but also by kinetic processes. Kinetic processes counterbalance the depletion in the heavier isotopes and avoid an unrealistic increase of the deuterium excess values. Starting with the values at Neumayer station, it is possible to calculate the values at Ritscherflya assuming isobaric cooling of the air masses and that the condensation temperature is represented by the 10 m firn temperature. Further inland these assumptions are no longer justified. From Ritscherflya to Amundsenisen the temperature above the inversion layer

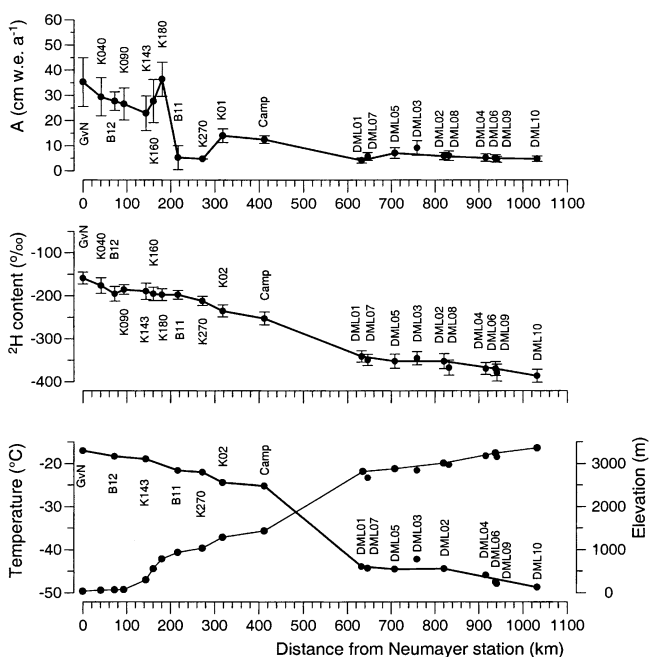


Fig. 6. Snow-accumulation rates, deuterium content of the near-surface layers and 10 m firn temperatures at the measuring sites from Neumayer station towards Amundsenisen. The surface elevation of the sites is also plotted.

culated (Fig. 6). Accumulation rates on Ekströmisen decrease continuously from $360\text{ kg m}^{-2}\text{ a}^{-1}$ at the former Georg von Neumayer (GvN) station to $250\text{ kg m}^{-2}\text{ a}^{-1}$ at km143 in the hinge zone area of the ice shelf (Table 1). Ascending towards Ritscherflya the accumulation rates increase again to coastal values, then fall to a minimum with values around $50\text{ kg m}^{-2}\text{ a}^{-1}$ on Ritscherflya 200–280 km south of Neumayer station, corresponding to the elevation interval 900–1050 m a.s.l. From field observations and isotope analysis (see below) it is clear that these low values are due to erosion by wind activity, not to lower precipitation. This low-accumulation area is also revealed by measurements with a ground-based snow radar (Richardson and others, 1997). From km270 to Heimefrontfjella, accumulation increases to values of $140\text{ kg m}^{-2}\text{ a}^{-1}$, with strong variations due to surface undulations. South of Heimefrontfjella, on the Amundsenisen plateau, the accumulation rates show a mean value of $57 \pm 15\text{ kg m}^{-2}\text{ a}^{-1}$, with a tendency to decrease from west to east. However, the accumulation

will be a proper measure for the condensation temperature (Robin and Johnsen, 1983). In addition, the air masses cool adiabatically (rather than isobarically) when ascending to > 3000 m a.s.l. Taking these assumptions into account it is possible to model the $\delta^2\text{H}$ and $\delta^{18}\text{O}$ values as well as deuterium excess values (Fig. 7).

Time series of accumulation rates and isotope content

Time series of yearly accumulation rates were calculated for nine cores from sites DML02–10 (Fig. 8). The firn core from DML01 was not used, as the core quality did not allow us to reconstruct time series based on annual values. The time series of accumulation rates are limited in extent, because detailed stratigraphic information is sometimes lacking within the first 2 m below the surface. The longest record (at DML09) covers a period of 100 years. The accumulation values at the different locations vary with a standard deviation of 10–29 kg m⁻²a⁻¹. None of the time series shows a significant trend. The same finding is valid for the core drilled on Amundsenisen by Isaksson and others (1996). Snow-pit and firn-core results (Table 3) fit with each other within the interannual variation of accumulation rates. At three locations (DML03, DML05 and DML07) it is already possible to compare the accumulation rates with preliminary results from the 1997–98 season, when longer firn cores were recovered, and the volcanic signal caused by the Tambora eruption in 1815 is clearly recognizable in the DEP profiles. The accumulation rates determined with reference to the Tambora peak at DML03 and DML07 agree with those for the shorter cores (Table 3). At DML05 the value for the longer period 1816–1997 is 15% lower than the value calculated with the shorter firn cores covering only the period 1930–96. This discrepancy can be judged when the annual time series of core B32 becomes available.

The time series of the $\delta^2\text{H}$ values were also calculated in depth intervals where only the approximate layering from the ³H dating is known; the series deduced from each of the ten cores are shown in Figure 9. They are correlated to some extent; 9 of the 45 possible cross-correlations between the

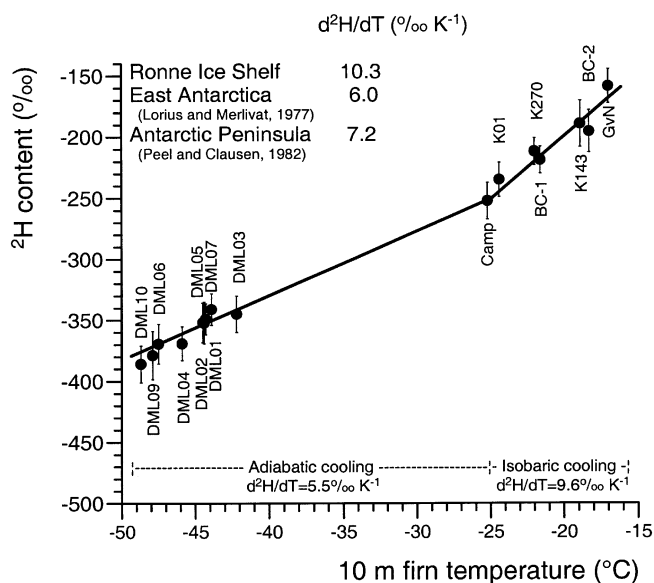


Fig. 7. Relationship between 10 m firn temperature and ²H content of the near-surface layers in the area of Ekströmisen, Ritscherflya and Amundsenisen.

time series are significant (Table 4). The individual series were stacked to enhance the signal-to-noise ratio, assuming that the individual series contain common information. The stacked series looks smoother, and its variance is reduced by one-third compared to the single series. The high-frequency part of the variance spectrum is also reduced. The stacked series characterizes the three periods around AD 1935, 1960 and 1980 as periods with higher $\delta^2\text{H}$ values (possibly higher temperatures). The regression analysis of the stacked time series revealed no statistically significant trend. The same is true for five of the ten individual series, but in the other five series (DML03, DML05, DML08, DML09 and DML10) the $\delta^2\text{H}$ values tend to become higher in the younger layers; the trend is statistically significant at the 95% confidence level. The rate of increase of the isotopic content, 0.1–0.2 $\delta^2\text{H}\text{‰ a}^{-1}$, is 2–4 times higher than the rate of change that Isaksson and others (1996) found since AD 1865 in their core drilled between DML05 and DML02 (0.006 $\delta^{18}\text{O}\text{‰ a}^{-1}$, corresponding to 0.048 $\delta^2\text{H}\text{‰ a}^{-1}$).

Do these results indicate a warming of the lower troposphere in DML in the last 100 years, such as was observed in the Weddell Sea sector of Antarctica (Peel and Clausen, 1982)? Certainly, the increase in $\delta^2\text{H}$ values cannot be caused by temperature alone, for two reasons. First, the $\delta^2\text{H}$ increase is not evident at all sites (not even in groups of neighboring cores) and is not observed in the stacked series. Second, the $\delta^2\text{H}$ increase is large and would imply an unrealistic temperature rise of up to 3.6 K using the above isotope–temperature relationship. Besides a warming of the tropo-

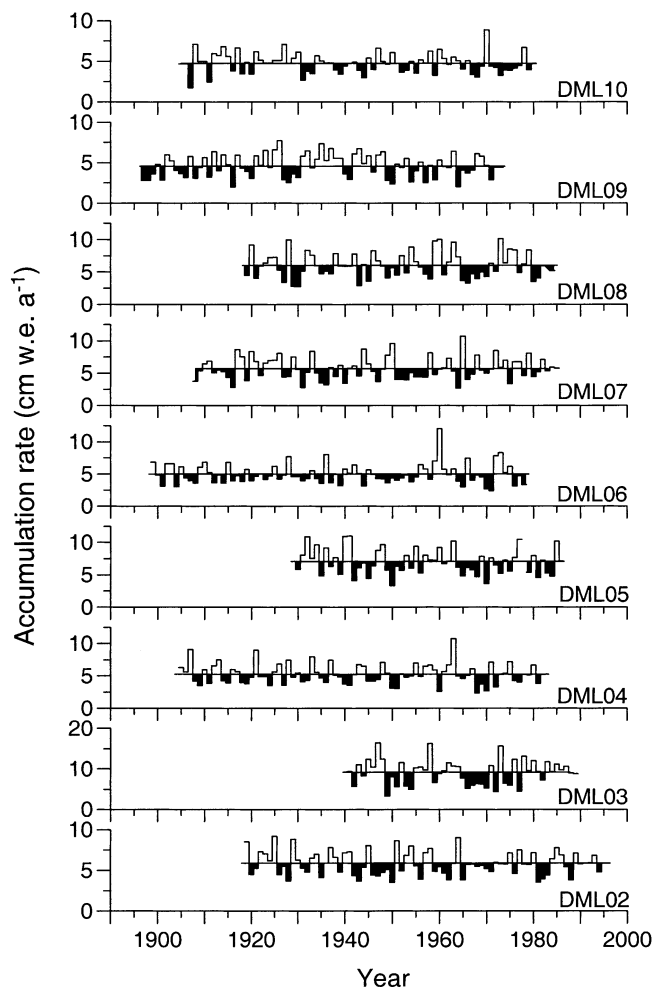


Fig. 8. Time series of annual accumulation rates at sites DML02–10.

Table 4. Matrix of correlation coefficients derived from time series of ^2H contents of firn cores at ten sites (DML01–10)

	DML01	DML02	DML03	DML04	DML05	DML06	DML07	DML08	DML09	DML10
DML01	1.00	0.27	–	–	–	–	–	–	–	–
DML02		1.00	0.37	0.22	–	0.49	–	–	–	–
DML03			1.00	–	–	0.37	0.26	–	0.28	–
DML04				1.00	–	–	–	–	–	–
DML05					1.00	–	–	0.36	–	–
DML06						1.00	–	0.20	–	–
DML07							1.00	–	–	–
DML08								1.00	–	–
DML09									1.00	–
DML10										1.00
Stacked values	0.36	0.53	0.38	0.49	–	0.71	–	0.37	0.51	–

Note: The correlations shown are significant within a confidence level of 95%; no significant correlation was found between the other cores.

sphere, which cannot be ruled out, several other processes may be involved, such as a change of the source region for the atmospheric water vapor or changing ratios of the amount of winter and summer snow in the layers. It is not yet possible to say which processes are dominant. Further chemical analysis of the cores needs to be undertaken to pro-

vide more information on the structure of the deposited firn layers. Also analysis of the deuterium excess will help to detect changing source regions for the precipitation.

CONCLUSIONS

The first results of glaciological investigations by means of 10 m firn cores in western DML yield a coherent dataset for the distribution of accumulation rate and isotope content. The distribution of the tritium content in the upper firn layers due to fallout during the period of nuclear weapons tests is a good tool for dating the firn cores. In combination with high-resolution DEP measurements, it is possible to reconstruct the annual layering in the firn for the last 70–100 years, even at locations where the accumulation rate is as low as $45 \text{ kg m}^{-2} \text{ a}^{-1}$. The spatial distribution of accumulation across Amundsenisen depends on the temperature at the drilling site, and indicates values generally decreasing from west to east. The time series of the accumulation rates show no significant trend for the 20th century. Therefore it is possible to use datasets covering different periods to construct an accumulation map for the area of the EPICA pre-site survey. Some of the time series of stable isotopes show increasing values since the turn of the century, which cannot be caused by temperature changes alone. At the present state of investigations a climatic warming in DML cannot be inferred with certainty. Chemical analysis and checks of the deuterium excess as well as some longer time series (from cores which were already drilled and for which the Tambora eruption in 1815 provides a reliable time marker) and circulation models for air-mass transport are needed to improve understanding of the climatic regime in this region.

ACKNOWLEDGEMENTS

We thank A. Ebbeler, A. Frenzel and F. Valero-Delgado (AWI) for assistance in the cold laboratory, and A. Olfmann and P. Seibel (GSF) for performing isotope measurements. Thanks go to all members of the German EPICA traverses in 1995–97 for assisting with the fieldwork.

Financial support by Deutsche Forschungsgemeinschaft (project Re-762/2) is gratefully acknowledged. This work is a contribution to the “European Project for Ice Coring in Antarctica” (EPICA), a joint European Science Foundation/

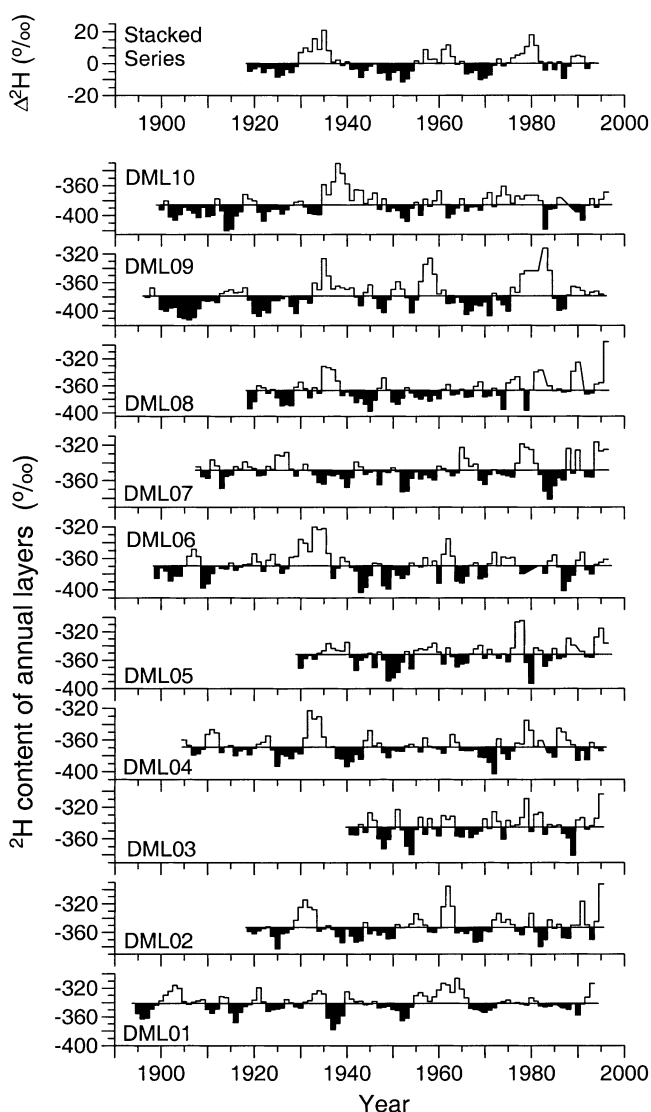


Fig. 9. Time series of annually resolved deuterium contents at sites DML01–10 and the stacked time series.

European Commission (EC) scientific program, funded by the EC under the Environment and Climate Programme (1994–98) contract ENV4-CT95-0074 and by national contributions from Belgium, Denmark, France, Germany, Italy, The Netherlands, Norway, Sweden, Switzerland and the U.K. This is EPICA publication No. 2 and AWI publication No. 1497.

REFERENCES

- Dome-F Deep Coring Group. 1998. Deep ice-core drilling at Dome Fuji and glaciological studies in east Dronning Maud Land, Antarctica. *Ann. Glaciol.*, **27**, 333–337.
- Drewry, D. J., ed. 1983. *Antarctica: glaciological and geophysical folio*. Cambridge, University of Cambridge. Scott Polar Research Institute.
- Gerland, S., H. Oerter, J. Kipfstuhl, F. Wilhelms, H. Miller and W.D. Miners. 1999. Density log of a 181 m long ice core from Berkner Island, Antarctica. *Ann. Glaciol.*, **29** (see paper in this volume).
- Graf, W., O. Reinwarth, H. Oerter, C. Mayer and A. Lambrecht. 1999. Surface accumulation on Foundation Ice Stream, Antarctica. *Ann. Glaciol.*, **29** (see paper in this volume).
- Hermichen, W.-D., P. Kowski and R. Vaikmäe. 1990. An oxygen-18 thermometer from snow of northern Queen Maud Land/Antarctica. *Geodät. Geophys. Veröff.* (Berlin), Reihe 16), 307–311.
- Isaksson, E., W. Karlén, N. Gundestrup, P. Mayewski, S. Whitlow and M. Twickler. 1996. A century of accumulation and temperature changes in Dronning Maud Land, Antarctica. *J. Geophys. Res.*, **101** (D3), 7085–7094.
- Jouzel, J. and L. Merlivat. 1984. Deuterium and oxygen 18 in precipitation: modeling of the isotopic effect during snow formation. *J. Geophys. Res.*, **89** (D7), 11,749–11,757.
- Legrand, M. R. and R. J. Delmas. 1987. A 220-year continuous record of volcanic H₂SO₄ in the Antarctic ice sheet. *Nature*, **327** (6124), 671–676.
- Lorius, C. and L. Merlivat. 1977. Distribution of mean surface stable isotope values in East Antarctica. *International Association of Hydrological Sciences Publication 118* (Symposium at Grenoble 1975 — *Isotopes and Impurities in Snow and Ice*), 127–137.
- Miller, H. and H. Oerter, eds. 1990. Die Expedition ANTARKTIS-V mit FS *Polarstern* 1986/87: Bericht zu den Fahrtabschnitten ANT-V/4–5. *Ber. Polarforsch.* 57.
- Minikin, A. and 7 others. 1998. Sulfur-containing species (sulfate and methanesulfonate) in coastal Antarctic aerosol and precipitation. *J. Geophys. Res.*, **103** (D9), 10,975–10,990.
- Moser, H. and O. Reinwarth. Unpublished. Untersuchungen zur Akkumulation auf dem Filchner/Ronne- und Ekström-Schelfeis unter Anwendung von Isotopenmethoden mit ergänzenden stratigraphischen Studien. Abschlussbericht. Neuherberg. Deutsche Forschungsgemeinschaft (DFG).
- Moser, K. 1991. Raum-Zeit-Variation der chemischen Zusammensetzung des Firns antarktischer Randgebiete. (Inauguraldissertation Universität Heidelberg).
- National Institute of Polar Research (NIPR). 1997. *Antarctica: east Queen Maud Land/Enderby Land glaciological folio*. Tokyo, National Institute of Polar Research.
- Orheim, O. and 6 others. 1986. Oxygen isotopes and accumulation rate at Riiser-Larsenisen, Antarctica. *Nor. Polarinst. Skr.*, 187, 33–47.
- Peel, D. A. and H. B. Clausen. 1982. Oxygen-isotope and total beta-radioactivity measurements on 10 m ice cores from the Antarctic Peninsula. *J. Glaciol.*, **28** (98), 43–55.
- Piccioletto, E., G. Crozaz and W. de Breuck. 1971. Accumulation on the South Pole–Queen Maud Land traverse, 1964–1968. In Crary, A. P., ed. *Antarctic snow and ice studies II*. Washington, DC, American Geophysical Union, 257–315. (Antarctic Research Series 16.)
- Richardson, C., E. Aarholt, S.-E. Hamran, P. Holmlund and E. Isaksson. 1997. Spatial distribution of snow in western Dronning Maud Land, East Antarctica, mapped by a ground-based snow radar. *J. Geophys. Res.*, **102** (B9), 20,343–20,353.
- Robin, G. de Q. and S. J. Johnsen. 1983. Atmospheric processes. In Robin, G. de Q., ed. *The climatic record in polar ice sheets*. Cambridge, Cambridge University Press, 47–52.
- Rundle, A. S. 1971. Snow accumulation and firn stratigraphy on the East Antarctic plateau. In Crary, A. P., ed. *Antarctic snow and ice studies II*. Washington, DC, American Geophysical Union, 239–255. (Antarctic Research Series 16.)
- Steinhage, D., U. Nixdorf, U. Meyer and H. Miller. 1999. New maps of the ice thickness and subglacial topography in Dronning Maud Land, Antarctica, determined by means of airborne radio-echo sounding. *Ann. Glaciol.*, **29** (see paper in this volume).
- Stenberg, M. and 7 others. 1998. Spatial variability of snow chemistry in western Dronning Maud Land, Antarctica. *Ann. Glaciol.*, **27**, 378–384.
- Wilhelms, F., J. Kipfstuhl, H. Miller, K. Heinloth and J. Firestone. 1998. Precise dielectric profiling of ice cores: a new device with improved guarding and its theory. *J. Glaciol.*, **44** (146), 171–174.