

The Great Polarized Light Microscope and the Great Salt Lake

Walter C. McCrone, McCrone Research Institute

Teaching on-site courses for the McCrone Research Institute has enabled me to see a lot of the USA. The van and I have been to all of the states except Hawaii and Alaska besides all of the Canadian provinces except Newfoundland and the Northwest Territories. Some parts of the USA have become nearly as familiar to me (and van) as the Outer Drive in Chicago, Rte. 1 down the California coast, Rtes. 80 and 90 to New York and New England, 55 and 65 South, 40 Southeast to Los Angeles and 80 to Salt Lake City and San Francisco, in particular. The latter route across the Great Salt Lake Desert is one of my favorites. That route is always different because of the Great Salt Lake. It's a large lake under normal conditions but conditions are never normal.

Great Salt Lake is the largest brine lake in the Western hemisphere. Today, only the remnant of a much larger Pleistocene Epoch Lake, it is 25% salt (NaCl) just under the saturation level. There aren't many living things able to stomach that concentration, some algae, a few flagellates, protozoa and invertebrates, a brine shrimp, two flies and an occasional floating human. It is a major supplier of salt, thousands of tons so far with no sign of lowering the concentration of the remaining brine.

During the past 10 years, its area has varied from less than 2000 miles² to more than 6000 miles². About 3 years ago, it was actually lapping at both sides of the roadway and in many places you drove at least partly through a few inches of salt water. On one trip during 1956, they had built a 4-foot levee along the road and I drove dry but below sea-level by maybe a foot. On the last trip in September the lake had receded many miles, leaving a white snow-like crust of salt a few millimeters thick as far as you could see on either side of the road.

I couldn't resist adding to our sand sample collection, so I stopped and chipped out a few chunks of sand with the sand grains cemented together by the salt deposit.

On returning to Chicago, I took a stereo picture of the salt surface (Figure 1), then chipped off a bit of the salt deposit and recrystallized it from a drop of water (Figure 2). On evaporation to complete dryness there were no indications of any anisotropic crystals, hence the salt is very pure NaCl. Sodium sulfate is reported to be a constituent but, if present, I should have seen it since it is less soluble than NaCl and anisotropic (i.e., visible between crossed polars whereas NaCl is invisible). The salt deposit, crushed to small particle size, shows well-cleaved NaCl cubes (Figure 3).

Next, I leached a bit of the underlying sand with lots of H₂O and examined the sand (Figure 4). It is quartz (surprise) and lots of calcite. The latter are aggregates of mostly small particles. They show high birefringence and all very nearly disappear in Aroclor 5442 ($n_D=1.662$) during rotation of the stage while observing the field with one polar. The clear particles in Figure 4 are quartz; the dark ones, calcite.

There were a few mineral grains showing indices higher than Aroclor and these included hornblende, tourmaline, biotite, and an amphibole (kataphonte), others with indices lower than Aroclor included apatite, actinolite and muscovite. All of these minerals were much finer than the sand grains and present only as traces; altogether quite a bit less than one percent of the sand. I assume larger quantities of the heavy minerals have been washed deeper into the sand layer. I did try a one-drop density separation (Figure 5) using bromoform but got only one photogenic tourmaline crystal for my trouble. Figure 6 shows the same crystal at higher magnification after picking it out of the bromoform, drying and remounting in Aroclor to make sure its refractive indices were slightly less than 1.66, and therefore tourmaline. It is too thin, about 5 μm , to show significant pleochroism. At this point, fortunately, for you, I felt I knew as much as I wished to know about the Great Salt Lake.

The van and I have collected a lot of other samples so if our Editor, Thom Hopen, rattles my cage again I'm ready to dig out another one that might interest some of you (besides me). ■

Reprinted from Micronotes 1987, publication of the State Microscopical Society of Illinois.

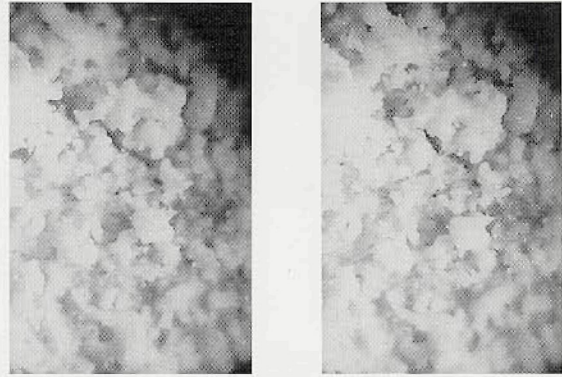


Figure 1. Stereo photomicrograph of the salt residue surface of the dry Great Salt Lake bed. 20X.

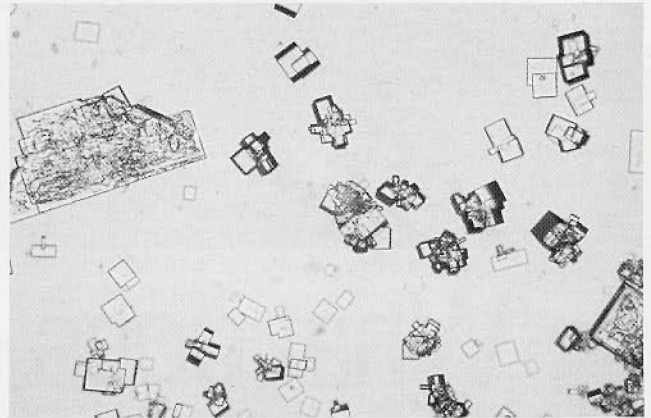


Figure 2. Cubes of sodium chloride crystallizing in an aqueous drop of salt solution from Great Salt Lake. 100X.

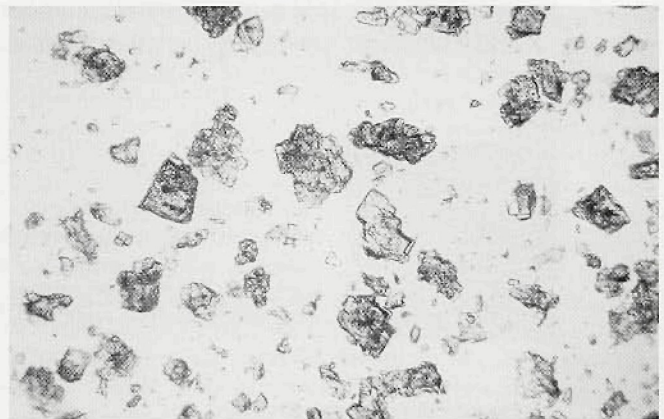


Figure 3. Crushed salt (NaCl) residue from Great Salt Lake dry-bed. 100X.

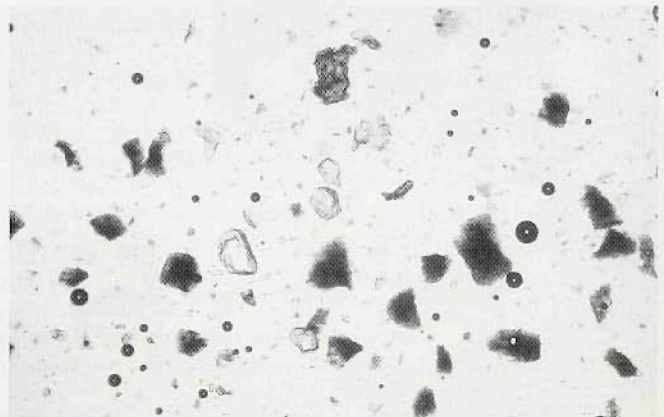


Figure 4. Sand sample for Great Salt Lake underlying deposited salt layer.

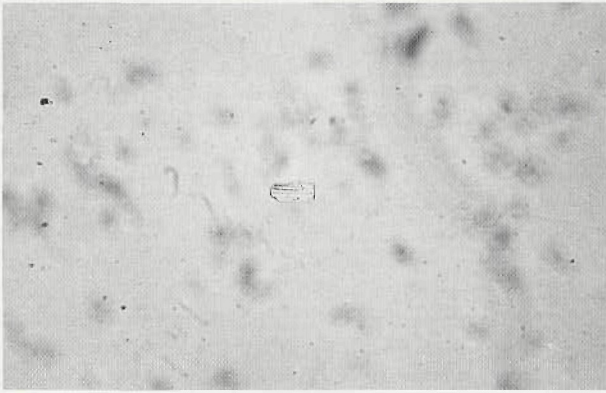


Figure 5. A crystal of tourmaline from Great Salt Lake sand lying on the bottom of a drop of bromoform (density about 2.9). Lighter minerals floating on the same drop are out of focus. 100X.

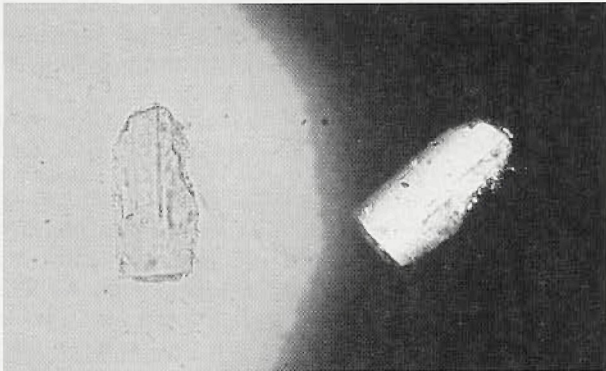


Figure 6. The same tourmaline crystal remounted in Aroclor shown (left) with ordinary transmitted light and (right) with crossed polars. 400X

Searching for a Truly Qualified EM Tech?

Take a closer look at MATC Graduates.

Our students receive four semesters of intensive, hands-on training using state-of-the-art equipment.

- All graduates are trained in every aspect of EM (32 credits):
- * TEM & SEM analysis of Biological and Materials samples
 - * Biological & Materials sample prep and morphology
 - * X-Ray microanalysis utilizing SEM & STEM
 - * Microscope maintenance and diagnostic electronics
 - * Computer use & image processing (8 credits)

For your current or future employment needs call, write, fax or e-mail

Glenn Boda or Michael Kostrna at
 (608) 246-6254 or 6762 fax (608) 246-6880
 e-mail msk5063@madison.tec.wi.us



Madison Area
 Technical College

Madison Area Technical College
 Electron Microscopy
 3550 Anderson St. reet
 Madison, WI. 53704

PAYING A LOT OF MONEY AND NOBODY'S PAYING ATTENTION?

Service Contracts are expensive. Are you getting the service you paid for?
 Call the Materials Analytical Services' EM SERVICE GROUP
 before you sign another Service Contract.

TEM'S/SEM'S

AMRAY
TOPCON
ISI
CAMBRIDGE
ZIESS

ULTRAMICROTOMES

DUPONT	RMC
MT-1	MT-5000
MT-2	MT-6000
MT-2B	MT-7000
MT-2C	CRYO

PREP EQUIPMENT

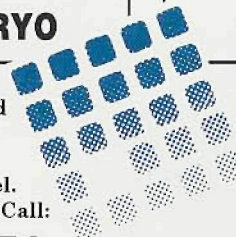
VACUUM COATERS
SPUTTER COATERS
MECHANICAL PUMPS
TURBO PUMPS
PLASMA ASHERS

WE SERVICE

COMPUTER CONTROLLERS
X-RAY SPECTROMETERS
BEAM BLANKERS
WATER CHILLERS

Contracts and On-Demand
 Emergency Service at
 Reasonable Rates from
 Factory Trained Personnel.
 In the Southeast Call:

1-800-421-8451



**MATERIALS
 ANALYTICAL
 SERVICES**

ADVANCED ANALYTICAL PRODUCTS AND SERVICES

3597 Parkway Lane • Suite 250 • Norcross, Georgia 30092 • 404-448-3200 • FAX 404-368-8256 or
 616 Hutton Street • Suite 101 • Raleigh, North Carolina 27606 • 919-829-7041 • FAX 919-829-5518