

THE
GEOLOGICAL MAGAZINE.

NEW SERIES.

DECADE IV. VOL. III.

JANUARY — DECEMBER, 1896.

THE
GEOLOGICAL MAGAZINE:

OR,

Monthly Journal of Geology:

WITH WHICH IS INCORPORATED

“THE GEOLOGIST.”

NOS. CCCLXXIX TO CCC.XC.

EDITED BY

HENRY WOODWARD, LL.D., F.R.S., F.G.S., F.Z.S., F.R.M.S.,

OF THE BRITISH MUSEUM OF NATURAL HISTORY;

PRESIDENT OF THE PALÆONTOGRAPHICAL SOCIETY,

AND VICE-PRESIDENT OF THE MALACOLOGICAL SOCIETY;

MEMBER OF THE LYCEUM OF NATURAL HISTORY, NEW YORK; AND OF THE AMERICAN PHILOSOPHICAL SOCIETY, PHILADELPHIA; HONORARY MEMBER OF THE YORKSHIRE PHILOSOPHICAL SOCIETY; OF THE GEOLOGISTS' ASSOCIATION, LONDON; OF THE INSTITUTION OF MINING AND METALLURGY, LONDON; OF THE GEOLOGICAL SOCIETIES OF EDINBURGH, GLASGOW, HALIFAX, LIVERPOOL, AND SOUTH AFRICA; CORRESPONDING MEMBER OF THE GEOLOGICAL SOCIETY OF BELGIUM; OF THE IMPERIAL SOCIETY OF NATURAL HISTORY OF MOSCOW; OF THE NATURAL HISTORY SOCIETY OF MONTREAL; AND OF THE MALACOLOGICAL SOCIETY OF BELGIUM.

ASSISTED BY

ROBERT ETHERIDGE, F.R.S. L. & E., F.G.S., F.C.S., &c.

WILFRID H. HUDLESTON, M.A., F.R.S., V.P.G.S., F.L.S., F.C.S.

GEORGE J. HINDE, PH.D., F.R.S., F.G.S., &c.

AND

HORACE BOLINGBROKE WOODWARD, F.R.S., F.G.S., &c.

NEW SERIES. DECADE IV. VOL. III.

JANUARY—DECEMBER, 1896.

LONDON:

MESSRS. DULAU & CO., 37, SOHO SQUARE.

F. SAVY, 77, BOULEVART ST.-GERMAIN, PARIS.

1896.

HERTFORD :
PRINTED BY STEPHEN AUSTIN AND SONS.

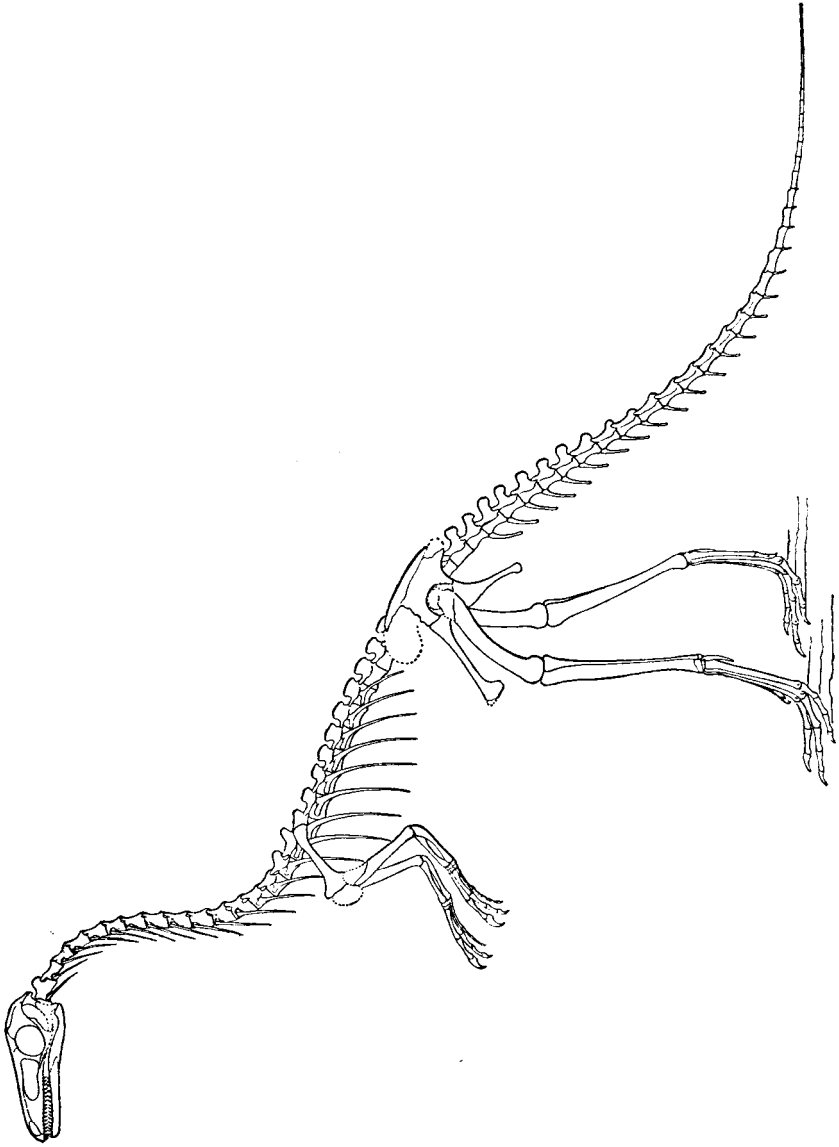
LIST OF PLATES.

PLATE	FACING PAGE
I. Restoration of <i>Compsognathus longipes</i> , Wagner	1
II. " " <i>Scelidosaurus Harrisonii</i> , Owen	5
III. " " <i>Hypsilophodon Foxii</i> , Huxley	6
IV. " " <i>Iguanodon Bernissartensis</i> , Boulenger	7
V. "Neptunic Dike" of Oligocene Sandstone cutting Neocomian Clays	49
VI. The Merjelen Lake and the Aletsch Glacier	97
VII. Scene of the Ice-Avalanche, Altels Glacier	103
VIII. Charles Wachsmuth	189
IX. <i>Triarthrus Beckii</i> , Green (Beecher)	193
X. Skeleton of <i>Aptornis defossor</i> (Owen)	241
XI. Two types of African Lake-Shores	324
XII. Skeleton of <i>Diaphorapteryx Hawkinsi</i> , Forbes	337
XIII. Some Original Members of the Palæontographical Society	385
XIV. <i>Cocconeuthis hastiformis</i> , Rüppell, sp.	439
XV. Slies of Nummulitic Limestone (Eocene)	487
XVI. Upper Chalk Belemnites	529

LIST OF ILLUSTRATIONS IN THE TEXT.

	PAGE
Sketch of <i>Compsognathus longipes</i> , Wagner	4
Restoration of <i>Hypsilophodon Foxii</i> , Huxley. (After Hulke.)	6
Table of British Strata, with North American Equivalents	9
<i>Etoblattina Deanensis</i> , sp. nov.	12
Section of Perlitic Rock from Jalisco, in Mexico	18
<i>Iocerinus</i> and <i>Meroerinus</i>	73
<i>Meroerinus Salopia</i> , sp. nov.	74
Diagram-map of the Comrie Earthquake	77
Diagram of Seismic Focus	78
Diagram of the Merjelen Lake	97
Diagram of old overflow level of the Merjelen Lake	99
Diagram of Ice-Avalanche on the Gemmi Pass	103
Cross-section of the Valley below the summit of Altels	104
Section from Ben Muich Dhui to Strathmore	110
Section from Lesmahagow to Caithness	111
Pelvis of <i>Cryptoelidus Oxoniensis</i> (Phillips)	146
Plan of the Baden District	149
Longitudinal Section of the Baden District	150
Transverse " " " "	150
Mineral Springs of Baden, Switzerland	151
Diagram showing Relationship of Subgenera of <i>Cheirurus</i>	166
General Range of Subgenera of <i>Cheirurus</i> in Europe	167
Pleistocene Beds of Malta	203
Section across Ben Lawers to Crieff	211
Section across Craig Na Challeich to Loch Earn	213
Section across the Pass of Leny	215
Two Sections through Eocene Beds at Bincombe	246
Section across Northern Somali-land	292
<i>Archæodiadema Thompsoni</i> , gen. et sp. nov.	318

	PAGE
Section along the base of the North Cliff, Southwold	355
<i>Anchisaurus colurus</i> , Marsh	391
<i>Compsognathus longipes</i> , Wagner	392
<i>Ceratosaurus nasicornis</i> , Marsh	392
<i>Brontosaurus excelsus</i> , Marsh	394
<i>Stegosaurus unguulatus</i> , Marsh	395
<i>Scelidosaurus Harrisoni</i> , Owen	396
<i>Triceratops prorsus</i> , Marsh	396
<i>Camptosaurus dispar</i> , Marsh	397
<i>Laosaurus consors</i> , Marsh	398
<i>Hypsilophodon Foxii</i> , Huxley	398
<i>Iguanodon Bernissartensis</i> , Boulenger	399
<i>Claosaurus annectens</i> , Marsh	399
<i>Subclymenia evoluta</i> , Phillips, sp.	417
<i>Listracanthus spinatus</i> , sp. n.	425
Profile of anterior part of Skull of <i>Nesopithecus Roberti</i> , gen. et sp. nov.	433
Palatal view of same Skull of <i>Nesopithecus Roberti</i>	434
Left Mandibular Ramus of <i>Nesopithecus Roberti</i>	435
Lenticle of Quartzite at Llansadwrn	552
Map of the Exmoor Earthquake, January 23, 1894	555



Restoration of *Compsognathus longipes*, Wagner. One-fourth natural size. Jurassic, Bavaria.