

IndustryNews

Molecular Devices Introduces MetaXpress 5.0

Molecular Devices, LLC, announced the launch of MetaXpress® 5.0 that has been designed to improve the ease and speed of custom analysis using the company's ImageXpress® Micro and Ultra Systems. The new software enables user-created analyses to be run on MetaXpress PowerCore™ Software, which harnesses the speed of parallel processing and instantly cuts analysis time from hours to minutes. The system includes 19 pre-designed analysis routines.

Molecular Devices, LLC
www.highthroughputimaging.com

Lowell Observatory Releases the First Images Using an E2V Imaging Sensor

The DCT is a 4.3 m aperture telescope built by Lowell Observatory and the Discovery Channel and is located in Coconino National Forest, Arizona. e2v supplied a state-of-the-art 4 k × 4 k high-performance imaging sensor that was used in the DCT to take these “first light” images. Following on from that, Lowell is developing the Large Monolithic Imager (LMI), which will be the telescope's primary optical imager and is equipped with e2v's 6 k × 6 k CCD231-C6 imaging sensor.

e2v
www.e2v.com

Olympus SCALEVIEW Microscope Objectives Earn Prestigious R&D 100 Award

Two Olympus microscope objectives that help scientists see far deeper into contiguous tissue than was ever before possible have been recognized as among the 100 most technologically significant products introduced last year. The Olympus SCALEVIEW 4 mm and 8 mm microscope objectives have earned the prestigious 2012 R&D 100 Award. Using the objectives and a special reagent together, brain tissue is literally cleared; scientists can now see the brain's interconnectedness as never before.

Olympus America Inc., Scientific Equipment Group
www.olympusamerica.com

Navitar Announces New Life Science and Biomedical Imaging Product Catalog



Navitar announced their new Optical Solutions for Life Science and Biomedical Imaging product catalog. This new 40-page catalog includes a wide variety of off-the-shelf and custom-designed optical components available for integration into larger research and OEM imaging systems. The extensive range of optics and illumination systems meet most live-cell imaging, inspection, and measurement needs that require high magnification. All Navitar products are backed by a lifetime guarantee.

Navitar, Inc.
http://navitar.com/digital_catalogs

FEI Buys 3D Visualization Software Company

FEI announced that it has acquired Visualization Sciences Group (VSG) of Bordeaux, France. VSG provides high-performance 3D visualization software products and tools to a range of markets, including oil and gas, geosciences, mining, life sciences, materials science, and industrial inspection. FEI expects the acquisition to have a neutral impact on GAAP earnings for the second half of 2012 and to be accretive in 2013.

FEI Company and VSG Avizo
www.fei.com and www.vsg3d.com

Early Access to the Latest LED Technology: Volpi and Luminus Cooperate

Volpi AG is a specialist in fiber-optic and optoelectronic lighting systems. The company relies not only on its own intensive and practically oriented development program in the area of photonics, but also on cooperation with competent partners. Volpi is thus now a certified solution partner of Luminus Devices in Billerica, Massachusetts, a company that is regarded as the industry leader in the development of the latest LED technology.

VOLPI USA
www.volpiusa.com

KJLC Launches Chamber Builder™ Program



The Kurt J. Lesker Company® introduces Chamber Builder™, a new advance in designing and ordering custom vacuum chambers. Combined with VacuCADSM, KJLC's online drawing service, the Chamber Builder program allows a customer to take a standard KJLC chamber, customize it to fit their application, and generate a 3D model in both PDF and STP formats. It is possible to add up to 20 ports per chamber with KF, ISO, and ConFlat vacuum flanges available.

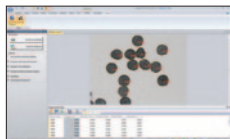
The Kurt J. Lesker Company
www.lesker.com/lc/?id=VAA9

Olympus Offers All-in-One CV1000 Medium-to-High Throughput Confocal Microscope Imaging System from Yokogawa

Olympus America Inc. has been named the sole North American distributor of the CV1000 Cell Voyager, an all-in-one, medium-to-high-throughput live cell imaging system from Yokogawa Electric Corporation, Tokyo, Japan. Olympus will offer the compact, easy-to-use, spinning-disk laser confocal microscope, which is designed for long-term time-lapse imaging, to scientists in the USA and Canada. Using the CV1000, researchers are free to focus on their science instead of their system.

Olympus America Inc., Scientific Equipment Group
www.olympusamerica.com/CV1000

Particle Counting and Analysis App for Image-Pro® Premier Software Offers Automatic Particle Detection and Sizing



Media Cybernetics announces the release of a new Particle Counting and Analysis App for their Image-Pro Premier software that provides automatic particle detection, particle sizing, and measurement functionality for industrial image analysis researchers. Using Image-Pro Premier's new Particle Counting and Analysis App, researchers can now automatically count and measure particles in live or static images with one mouse click.

Media Cybernetics Inc.
www.mediacy.com/index.aspx?page=App_ParticleAnalysis

Corrosion Analysis Network Partners Collaborate to Launch Major Site Update

ASM International and NACE are proud to announce the launch of the new and enhanced version of the Corrosion Analysis Network (CAN) website. The CAN is the most comprehensive and authoritative online source for researching, understanding, preventing, and solving corrosion-related problems and is now more user-friendly than ever before. The updated CAN addresses every aspect of corrosion that technical personnel would need to know.

ASM International and NACE
www.corrosionanalysisnetwork.org

End-Point Detection Module for Improved Electronic Package Decapsulation and Sample Preparation



ULTRA TEC Manufacturing, Inc. announces the availability of a new end-point detection module for the popular ASAP-1 IPS Selected Area Preparation System. The End-point Detection Module is a hardware and software enhancement for the ASAP-1 IPS that provides the capability to quantify and act on the capacitive and/or resistive properties of electronic device and packaging materials, in order to enhance the sample preparation process.

ULTRA TEC Manufacturing, Inc.
www.ultratecusa.com

ASPEX Earns ISO 9001:2001 Certification

ASPEX Corporation was awarded an ISO 9001:2008 management system certificate by SRI Quality System Registrar. ASPEX, located in Delmont, Pa., designs, manufactures, services, and sells scanning electron microscopes (SEMs) and provides analytical support for academic, industrial, and manufacturing applications. The ISO certification comes less than a month after the company's launch of EXpressX, the fastest automated bench-top microscopy system available. EXpressX combines a powerful SEM, ASPEX's proprietary OmegaMax™ energy-dispersive x-ray spectrometry (EDX) technology, and Perception 2 software.

ASPEX Corporation, an FEI Company
www.aspecorp.com

Non-Invasive Cytometric Technique Could Eliminate Need for Blood Samples



An Israeli team has demonstrated a non-invasive technique for imaging blood cells *in vivo* that could eliminate the need to extract blood from many patients. Powered by the Andor Newton Electron Multiplying EMCCD camera, their high-resolution Spectrally Encoded Flow Cytometry (SEFC) probe offers primary care physicians the capability to detect directly a wide range of common medical disorders, such as anaemia and bacterial infection, and potentially life-threatening conditions, including sepsis, thrombosis, and sickle cell crisis.

Andor Technology plc.
www.andor.com/spectroscopy_solutions

Now It is Even Easier to Upgrade Your Analog SEM to Digital



Quartz Imaging Corporation is proud to introduce its new Quartz PCI - Slow Scan USB Model. This is a compact external device that plugs in to a USB port on your PC and connects to the scan generator and video outputs of your SEM. The USB Model replaces our internal Slow Scan board first introduced in 1994. Compatible with Windows XP, Vista, and Windows 7 (32- and 64-bit).

Quartz Imaging Corporation
www.quartzimaging.com

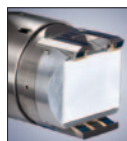
EDAX Introduces Octane Series SDDs for Fast, High-Quality EDS Microanalysis



The EDAX Octane SDD family delivers high-quality EDS data at previously unachievable speeds. The Octane Series includes four models—the Pro, Plus, Super, and Ultra—that are designed specifically to meet the demands of key microanalysis applications. At the core of the Octane family is an advanced spectrometer design and state-of-the-art electronics that enable energy resolution down to 121 eV with world-class efficiency in converting input counts into stored data.

AMETEK EDAX
www.edax.com

ARGUS FSE/BSE Imaging System



With the addition of the ARGUS foreshattered (FSE) / backscattered electron (BSE) imaging system, Bruker's CrystAlign EBSD system is able to provide valuable additional information for meaningful and efficient EBSD analysis. Three FSE detectors positioned below the screen are used for acquiring color-coded orientation contrast images, while two BSE detectors placed above the phosphor screen are used to acquire phase contrast images. The phase density contrast signal can then be either used individually or mixed with the FSE signal.

Bruker Nano
www.bruker-nano.com