

Research Article

Cite this article: Stanbrook-Buyer R, Jones M, and Wheeler CP (2025). Biotic and abiotic drivers of dung beetle assemblage structure in Kenyan Afromontane forest: trees and elephants matter. *Journal of Tropical Ecology*. 41(e11), 1–12. doi: <https://doi.org/10.1017/S0266467425000100>

Received: 10 August 2023
Revised: 11 February 2025
Accepted: 14 February 2025

Keywords:

Afromontane forest; defaunation; biodiversity; mammals; indicator species

Corresponding author:

Martin Jones; Email: m.jones@mmu.ac.uk

Biotic and abiotic drivers of dung beetle assemblage structure in Kenyan Afromontane forest: trees and elephants matter

Roisin Stanbrook-Buyer¹ , Martin Jones² and Charles Phillip Wheeler²

¹Department of Integrated Environmental Science, Bethune-Cookman University, Daytona Beach, FL 32114, USA and ²Department of Natural Sciences, Manchester Metropolitan University, Chester Street, Manchester, M1 5GD, UK

Abstract

Anthropogenic actions are likely to harm dung beetle populations directly through habitat loss and indirectly through the cascading effects of large mammal depletions. Despite the reliance of dung beetles on mammal dung, there are only a handful of studies that have directly assessed the impact of habitat degradation and associated mammalian loss on dung beetle populations in Africa. We evaluated whether patterns in dung beetle species abundance, richness, and body size can be associated with mammalian herbivore abundance and species richness, habitat structure, and the distance between sample sites. Additionally, we ascertained how the presence of elephants (*Loxodonta africana*) may affect a dung beetle assemblage by determining which species could be used as bioindicators of elephant presence. We found herbivore and overall mammal abundance explained 17% of dung beetle assemblage structure, 2% of dung beetle abundance, 10% of dung beetle species richness and, 15% of the variation in dung beetle body size. Habitat structure explained 27% of dung beetle assemblage structure, 11% of dung beetle abundance, and 14% of the variation in dung beetle body size. Spatial distance between trapping locations explained 13% of the dung beetle assemblage structure, 4% of species richness, 3% of abundance, and but had no effect on dung beetle body size. We also identified four dung beetle species that may be used in future management plans as bioindicators of elephant density Afromontane Forest in East Africa. This information may become especially important for future monitoring as it is predicted that the areas in which elephants occur in Afromontane Forest are set to decline due to deforestation, and the expansion and intensification of agriculture.

Introduction

Dung beetles play a crucial role as ecosystem service providers by efficiently recycling animal waste (Nichols *et al.* 2008; Noriega *et al.* 2021). They feed on and bury dung, which helps to break it down and return nutrients to the soil (Stanbrook and King 2022), benefiting plant growth (Badenhorst *et al.* 2018) and reducing greenhouse gas emissions (Piccini *et al.* 2017). However, these invaluable insects are facing multiple threats, namely habitat loss, primarily due to deforestation and urbanisation, and the widespread use of anti-parasitic medications that are considered toxic to dung beetles (Lumaret *et al.* 2020; Tovar *et al.* 2023). Climate change poses another challenge, as rising temperatures and altered precipitation patterns can disrupt the timing and availability of dung resources, affecting their reproductive success and overall survival (Kirkpatrick and Sheldon 2022). A recent review of the factors driving declines in tropical dung beetles has outlined how other human activities may alter dung beetle abundance, assemblage composition, and diversity (Fuzessy *et al.* 2021; Lopez-Bedoya *et al.* 2022). Importantly, Fuzessy *et al.* suggested that anthropogenic actions are likely to harm dung beetle populations directly through habitat loss and indirectly through the cascading effects of large mammal depletions.

Reductions in mammal diversity and habitat destruction often go hand in hand (Cassano *et al.* 2014; Quinn *et al.* 2017) and insects are particularly susceptible to habitat loss and are known to be affected by reductions in hospitable habitat necessary to support healthy populations (Cardoso and Leather 2019; Hallmann *et al.* 2017; Wagner 2020). One such insect group, dung beetles, also rely on access to mammal faeces in addition to natural intact habitats (Bogoni *et al.* 2016; Chiew *et al.* 2022; Correa-Cuadros *et al.* 2022; Raine and Slade 2019). Human-induced large-scale declines in wildlife populations are often particularly severe for animals with a large body size (Cardillo *et al.* 2008; Galetti and Dirzo 2013). Globally, large terrestrial mammals (bodyweight >3kg) are in drastic decline both within (Craigie *et al.* 2010) and outside protected areas (Harris *et al.* 2009). These declines are germane as many large mammal species provide important ecological functions such as arthropod suppression, seed dispersal, pollination, material, and nutrient distribution (Duffy *et al.* 2007), and their

© The Author(s), 2025. Published by Cambridge University Press. This is an Open Access article, distributed under the terms of the Creative Commons Attribution licence (<https://creativecommons.org/licenses/by/4.0/>), which permits unrestricted re-use, distribution and reproduction, provided the original article is properly cited.



extirpation can initiate cascading effects likely to instigate functional losses in the ecosystems which once harboured them (Brodie *et al.* 2021; Fleming *et al.* 2014). These losses may become particularly relevant in East Africa where most of the world's largest mammals now exist (Faurby and Svenning 2015) and form the backbone of ecosystem service provision (Dobson 2009). In Kenya, large mammals are at a third of their recorded abundance in the 1970s (Ogutu *et al.* 2011). These populations have undergone severe declines due to poaching, land use change, and livestock incursion, and pachyderms (elephants and rhinoceros), which once roamed freely over wide areas, are now often restricted to game reserves. These reserves are often fenced to combat poaching and prevent agricultural encroachment (Pekor *et al.* 2019).

To date, several studies have linked dung beetle species richness and abundance to declines in mammalian species richness (Bogoni *et al.* 2016; Coggan 2012; Culot *et al.* 2013; Correa-Cuadros *et al.* 2022; Fuzessy *et al.* 2021; Nichols *et al.* 2009; Raine and Slade 2019) with the majority of studies finding that dung beetle abundance is high when the surrounding habitat offers a high mammalian biomass (Andresen and Laurance 2007; Barlow *et al.* 2007; Krell and Krell-Westerwalbesloh 2024; Pryke *et al.* 2022). Dung beetles rely on mammalian dung as a both food source and a breeding substrate (Holter 2016), and while most dung beetles are generalist feeders of mammalian dung (Frank *et al.* 2018), many belonging to the subfamily Scarabaeinae are specialist feeders of mammal dung (Raine and Slade 2019), particularly that of large herbivores (Holter 2016).

Despite the reliance of dung beetles on mammal dung, there are only a handful of studies that have directly assessed the effects of habitat degradation and associated mammalian loss on dung beetle populations in Africa. Furthermore, a recent study found adult dung beetles to be physically smaller in areas where native wild mammal fauna is absent and replaced by domestic livestock, which indicates that a reduced body condition occurs when dung beetles do not have access to rich and diverse dung resources (Nependa *et al.* 2021), suggesting negative implications for dung beetle preservation in areas that are or will become faunally depauperate. Consequently, it is not unreasonable to assume that areas with low mammal diversity may also suffer from a decline in ecosystem functioning along with a corresponding decline in dung beetle functional diversity (Correa-Cuadros *et al.* 2022; López-Bedoya *et al.* 2022; Stanbrook *et al.* 2021a). For example, in areas of Africa where elephants have been poached to extirpation, large dung beetles, which as a functional group are responsible for most of the dung removal and nutrient cycling in soils, are largely absent due to lack of elephant dung (Cambefort 1982). However, while it is likely some large dung beetle species such as those in the *Heliocopris* genus may occasionally use a dung substitute when elephant dung is no longer available, this switch in dung type may have implications for larvae, as larval offspring display smaller body size in alternative dung types, compared to larvae provisioned with elephant dung (Hanski and Cambefort 1991) indicating possible directional selection in dung beetle body size in a locality where elephants are extirpated. In their meta-analysis of global deforestation and its impact on dung beetles, López-Bedoya *et al.*, (2022) show that large tunnelling dung beetles are the most sensitive to changes in vegetation cover and demonstrate a marked decrease in abundance when primary forests undergo disturbance. Furthermore, the authors link these changes in abundance to the loss of large mammals, which provide the large quantities of dung required by large tunnelling dung beetles, and also note the loss of larger species of dung beetle can intensify negative effects on

ecosystem functioning, as these are the species that make the greatest contribution to ecosystem services (Piccini *et al.* 2018, 2020).

Our study assesses the interactive effect of mammal diversity and habitat structure on Afromontane dung beetle richness, abundance, and body size, and attempts to provide a better understanding of how the distribution of elephant [*Loxodonta africana* (Cuvier, 1825)] may affect dung beetle communities which occur within Afromontane Forest. Our choice of dung beetles as a model taxon is based on previously described attributes of dung beetles as a cost-effective indicator of mammal–dung beetle interactions in a recent similar study in Bornean tropical forest (Chiew *et al.* 2022) and in South African woodlands (Pryke, Roets, and Samways 2022). We addressed the following questions (i) does habitat structure have a stronger effect on dung beetle diversity and species richness than mammal abundance in montane forests in Africa? And (ii) are dung beetles directly affected by the density of large mammals such as elephants in African forests? We hypothesised that habitats which contained a higher abundance of mammals, in general, would have a positive effect on dung beetle diversity, and in areas of high elephant density, the assemblage composition of dung beetles would shift towards dung beetles with a larger body size.

Methods

Study site

The Aberdare National Park (ANP), located in central Kenya, contains several Afromontane vegetation types which harbour a diverse assemblage of dung beetles (Stanbrook *et al.* 2021b), and is one of the best examples of preserved montane forest along the African equator (Kipkoech *et al.* 2020). The ANP lies to the east of the Gregory Rift Valley and is about 80 km north of Nairobi and 17 km from Nyeri town (0.4167° S, 36.9500° E). The altitude of the ANP ranges between 1888 m and 4001 m (Stanbrook *et al.* 2021). The climate is classed as Cwb: Dry-winter subtropical highland according to the Köppen-Geiger climate classification index. Topography and soil type modify the distribution of the six main vegetation types (Bushland, Juniperus-dominated forest, Podocarpus-dominated forest, Hagenia-dominated forest, Bamboo, and Ericaceous moorland) found within the park. The vegetation consists mainly of bamboo, high heath moorland at upper elevations with large areas of open, and closed canopy forest with Bushland prevalent at lower elevations.

The park also has a rich and diverse mammalian fauna that includes a large population of African elephant (*L. africana*) (Massey *et al.* 2014; Morrison *et al.* 2022) and a small number of black rhino [*Diceros bicornis* (Linnaeus, 1758)] that suffered a population crash, which began in the 1960s and reduced the estimated number from 450 individuals (Sillero-Zubiri and Gottelli 1991) to an estimated seven individuals in the mid-2000s (Patton and Jones 2007). The ANP is enclosed by an electric fence which surrounds the entire 400 km perimeter of the park (Morrison *et al.* 2018). Initially, the electric fence was constructed to protect the black rhino population within the ANP but poaching outstripped fence construction and rhino numbers within the park fell drastically between 1989 and 2009 when the fence was completed. However, the fence minimised other illegal activities such as firewood collection and illegal logging, which in the past drove habitat degradation (Lambrechts *et al.* 2003), and recent surveys indicate that the ANP may now house a dense elephant

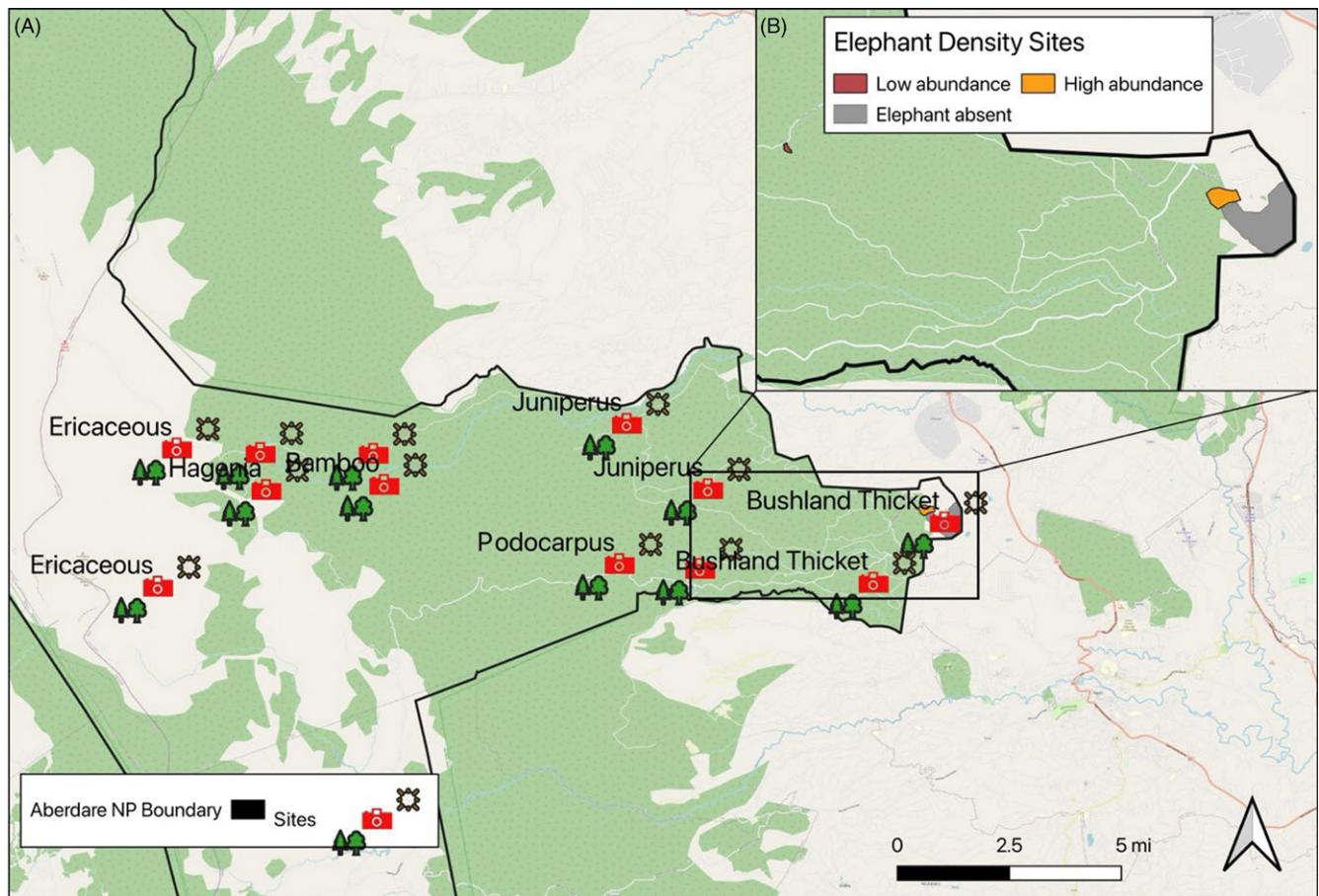


Figure 1. (A) The study area showing the distribution of the sampling points, vegetation measurements and camera traps within the Aberdare National Park; (B) The area contained within the rectangle shows the locations of sites describing variation in elephant density with the Aberdare National Park (black boundary). Elephant absent (grey polygon), and the highest abundance site (orange polygon) are adjacent to each other at Treetops Lodge in the East salient area. The low abundance site (brown polygon) is located in an open glade in the salient sector.

population, with elephant detected at various densities ranging from $6.27/\text{km}^2$ in scrub habitat at lower elevations to $0.44/\text{km}^2$ in moorland habitat at higher elevations within the ANP (Morrison *et al.* 2022).

Dung beetles

Twelve 1500 m transects were used to assess the effect of spatial variation and habitat structure on dung beetle assemblage composition. Twelve pitfall traps were placed at 125 m intervals along each transect (Figure 1). Each trap consisted of a one-litre bowl quarter-filled with a detergent and water solution and buried in the ground with the lip of the bowl level with the soil surface. Traps were baited with 50 g of elephant dung, which was collected each morning prior to being used as bait. The dung was wrapped in fine gauge mesh netting and suspended directly over each one-litre bowl. Traps were emptied and re-baited every 24 hours for four days to provide a total sample of 48 samples per transect and total of 576 samples for the whole study.

In addition to the twelve transects and pitfall traps mentioned above, which were used to assess the effect of habitat structure on dung beetles, we also set up a smaller subset of four pitfall traps located in each of three areas where we observed high, low, or no elephant presence (Figure 1). These traps were also baited with elephant dung and used the same trapping protocol as described

above. These traps were not located along a linear transect but within a 200 m^2 grid with each trap located on each corner of the square. In total, 50 g of dung was used as a standardised bait amount to avoid attraction bias between the pitfall traps.

Once collected, the dung beetles were transferred into a 70% ethanol solution for preservation and identification. To measure body length, measurements from the external edge of the clypeus to the bottom of the pygidium were taken using the line toolbar found in the AxioVision software package and recorded in micrometres (μm) per individual dung beetle. We measured thirty individuals of each species, and in instances where fewer than thirty individuals were caught, we measured all of the specimens that were captured. Where more than 30 individuals were caught, a random sample of 30 individuals was taken from the sample to be measured by assigning each beetle a number between zero and the maximum sample size. A random drawing for each specimen was then performed using the random number generator on www.random.org.

Camera traps and mammal data

To assess mammal occurrence and species richness, two Bushnell™ NatureView camera traps were set up within 20 m of each pitfall trap along each transect (Figure 1) during 2015 (6th July–13rd August) and 2016 (12th–29th February), yielding a total sample

effort of 15840 trapping hours (55_{NIGHT}X12_{TRANSECT}X24_{CTRAP}). The camera traps recorded 61,230 images overall, 56,578 of which contained no mammal record, and 4,652 images which contained animals which could be identified. Cameras were set at 140 cm above the ground to accommodate the height of most mammals suspected of being present within the sampling sites and to avoid camera loss by hyaena [*Crocuta crocuta* (Erxleben, 1777)], Cameras were set to record for 24 hours per day with a time delay for activation set at 30 seconds. Traps were checked and reset every four days, with data downloaded onto Secure Digital (SD) cards at the end of the fourth day. The images from SD cards were loaded into Camelot open-source camera trapping software (www.camelotproject.org) for sorting and analysis. Unidentifiable incomplete captures such as tails and hind legs were not considered for further analysis. For this study, photographs of an animal captured by a camera at a particular location in sequence with 5s intervals were considered as a single capture event. We first identified, and then categorised all mammal species into feeding guilds using information found within Kingdon (2015).

Camera traps to record elephant occurrence

Three additional camera trap locations were established around Treetops Lodge in the Salient sector of the ANP (Figure 1). Two camera traps were installed in the centre of each pitfall trap grid in each of the two locations known to be occupied by elephant herds at either high or low abundances, and a further two camera traps were installed inside the fenced-off area adjacent to treetops lodge, which is inaccessible to elephants and was used as a control. The camera trapping locations were established with the guidance of the Kenya Wildlife Service who regularly conduct anti-poaching patrols in areas known to be frequented by elephant herds. At the beginning of the long rains (mid-March), the elephants began to migrate from the higher areas of the ANP to the Salient sector where our sampling site was located. They are stopped by the electric fence and are funnelled to the area around Treetops Lodge, where a large population of elephants congregate (Schmitt 1992). In 1998, a section of the National Park adjacent to the Treetops Lodge was completely enclosed by another electric fence located inside the existing electrified boundary. The fence was constructed to exclude elephants and buffalo (*Syncerus caffer*) with the aim of protecting the vegetation surrounding a nearby water hole from increasing elephant-induced damage. The camera traps collected a total of 66 independent occurrences of elephant within the two unfenced sites. Eight occurrences of elephant were recorded at the low abundance site, and 58 occurrences of elephant were recorded at the high abundance site, with no elephant occurrence recorded within the fenced site, which was expected. As such, these three sites were chosen to represent areas where elephants were absent, in low abundance and in high abundance.

Assessment of habitat structure

We recorded the following vegetation characteristics within 30 m of each pitfall trap; tree species richness, the number and species of tree, tree diameter at breast height (dbh), percentage ground cover, and percentage canopy cover around and above each trap. Two concentric circles (1 m and 30 m radius) were established around each trap to record the data. Tree seedlings and saplings (2.5–10 cm diameter) were counted in the 1 m radius circle, and mature trees (>10 cm diam.) in the 30 m radius circle. Tree diameter at breast height (dbh) was measured at the standard 1.3 m height. Ground

vegetation and canopy cover were determined in the 1 m radius circles. Estimates of percentage ground cover were taken for herbs when individuals were impractical to count. For each trap, the ground vegetation cover was visually scored on a five-point scale within the 1 m radius circle as follows: (1) 0–5 per cent of the total area of the circle; (2) 6–25 per cent of the total area of the circle; (3) 26–50 per cent of the total area of the circle; (4) 51–75 per cent of the total area of the circle; and (5) >75 per cent of the total area of the circle. Canopy cover was measured at three points within the 1 m radius of every trap using a spherical densiometer.

Statistical analysis

We first assigned variables to one of three matrices (Table 1), which were used to construct a global model that included all explanatory variables. We then conducted transformation-based RDA ordination with forward selection on each matrix, then used variation partitioning to evaluate the per cent contribution (both individual and combined) of each group of predictor variables containing variables related to mammal occurrence, habitat structure, and linear distance to explain the variation in dung beetle assemblage composition, abundance, and body size (Borcard and Legendre 2002; Legendre and Legendre 1998, 2012). The variation was partitioned by selecting a subset of (significant) predictor variables based on the complete mammal data set and non-multi-collinear habitat data and using the forward selection method proposed by Blanchet *et al.* (2008) to reduce the likelihood of type-I errors. Variation partitioning is a type of analysis that combines RDA and partial RDA to divide the variation of a response variable among two, three, or four explanatory data sets. Variation partitioning performs ordinations for all predictors, then one-by-one for each set of predictors individually, removing the effects of other predictors *e.g.*, RDA for mammals removes the effects of habitat and distance; RDA for habitat removes the effects of mammals and distance (Dray *et al.* 2006). The proportions of variation explained by the predictors are represented by adjusted r^2 (adj. r^2) in accordance with Ezekiel's correction, where values are expressed as percentages.

Using the spatial variables, we created Principal Coordinate Analysis of Neighbourhood matrices (PCNM) to determine the spatial heterogeneity of the dung beetle assemblage data between sample sites (Borcard and Legendre 2002). The PCNM functions were constructed using the 'pcnm' function from the R software 'vegan' library. We selected the positive PCNM vectors according to spatial autocorrelation acquired by the Moran index (Dray *et al.* 2006) using the 'moran' function in the R software 'spdep' library. PCNM represents spectral decomposition of the spatial relationships among the study sites. Multivariate partitioning (Blanchet *et al.* 2008) can be applied using PCNM variables as spatial or temporal descriptors and, for this reason, were employed as predictors of spatial variation among sample sites to avoid autocorrelation.

We used variation partitioning via Redundancy Analysis (RDA) to assess the percentage contribution for each group of predictor variables. Group one contained predictors relating to habitat structure, group two contained mammal community predictors, and group three contained the linear spatial distance obtained from the PCNMs (Table 1). These groups were subsequently used to describe the variation in dung beetle assemblage composition, abundance, and body size within the ANP.

Table 1. Mammal, environmental, and spatial variables used to partition the variation in dung beetle species richness, abundance, assemblage structure, and body size

Mammal Variables	
MSR	Mammal Species Richness
MOcc	Mammal Occurrence
MInst	Occurrence of Insectivores
MHerb	Occurrence of Herbivores
MOmni	Occurrence of Omnivores
MCarn	Occurrence of Carnivores
Environmental Variables	
TDensity	Tree Density m ²
TreeSR	Tree species richness
Mean DBH	Mean diameter at breast height
GC_bare	% Bare ground
GC_herb	% herb cover
GC_shrubs	% shrub cover
GC_grass	% grass cover
GC_tree	% small tree/bush cover
GC_bamboo	% bamboo cover
Can. Cover	% Canopy cover
Mid.layer density	Leaf density mid tree
Canopy.height	Canopy height (m)
Spatial variables	
Latitude	Mean Latitude
Longitude	Mean Longitude

To examine if elephant abundance was associated with dung beetle assemblage composition, we used non-metric multidimensional scaling (NMDS) based on the Bray-Curtis distance metric to characterise species composition. NMDS is an unconstrained ordination method used for exploratory analyses of the relationships between species occurrences and environmental variables (Legendre and Legendre 2012). NMDS places sites in ordination space in such a way that ordination distances correspond to differences in similarity (sites placed closer together) or dissimilarity (sites placed further apart) in species composition (Lee-Yaw *et al.* 2022). Ordination analysis was conducted in the package ‘vegan’ and implemented in version 3.1.1 of R (Development Core Team, 2021). To verify statistical differences between groups formed by the NMDS, an analysis of similarity (ANOSIM) was performed.

Indicator species analysis

To identify which dung beetle species were associated with elephant presence, we used indicator species analyses using the Multinomial Species Classification Method, CLAM (Chazdon *et al.* 2011). Specifically, the method was applied to identify any dung beetle species closely associated with elephant presence at high density (EP) versus elephant absent (EA) sites. CLAM is a multinomial model that uses pooled species abundance data from two distinct groups to classify species into four categories: (1)

‘Group A specialist’; (2) ‘Group B specialist’; (3) ‘Generalist’, and (4) ‘Too rare to classify’. Species are considered specialists if $\geq 66\%$ of their occurrences are within a specified group. The analysis was conducted using the function ‘clamtest’ located in the vegan package in R. An important parameter of the multinomial model is K, which refers to the threshold for classifying species according to their indicator preference. We used a super-majority specialisation threshold of $K = 0.667$, and $p = 0.05$ to classify which species were specialists or generalists in areas with and without the presence of elephants. The alpha value was set at $p = 0.05$, which is the probability suggested when the aim is to classify individual species instead of all species.

Results

Dung beetles

We collected 8020 individual dung beetles from 34 different species (Supp. Table 1). The number of dung beetle species per transect varied between nine and twenty-nine species and ranged in abundance between 149 and 1511 individuals. Mean body length ranged between 2.72 ± 1.14 mm to 18.2 ± 3.17 mm (Supp. Table 2).

Mammal data

We recorded 2592 mammal occurrences from 26 species. Species richness among the eleven sites ranged from three to 26 species. Total species richness included five carnivores including leopard [*Panthera pardus* (Linnaeus, 1758)], serval [*Leptailurus serval* (Schreber, 1776)], and spotted gennet [*Genetta maculata*, (Gray, 1830)] ranging from 1–4 per site, 14 omnivores such as olive baboon [*Papio anubis*, (Lesson, 1827)], slender mongoose [*Galerella sanguinea*, (Rüppell, 1835)], and Zorilla [*Ictonyx striatus*, (Perry, 1810) (0–13 per site), and eleven herbivores including African elephant (*L. africana*), black rhino (*Diceros bicornis*), Harvey’s duiker [*Cephalophus harveyi*, (Thomas, 1893)], and suni (*Neotragus moschatus*, (Von Dueben, 1846)], (1–11 per site) (Supp. Figure 1). Occurrences varied from 19 individuals observed in high-elevation Ericaceous grassland habitat to 903 individuals in lower elevation Bushland thickets.

Variation partitioning

Tree density and percentage of ground cover and spatial vectors derived from PCNMs were the significant predictors of habitat and spatial variables (Supp. Table 3), and abundance of herbivores and overall mammal abundance were the significant predictors of mammal assemblage attributes (Supp. Table 4). Variation partitioning using these significant predictors indicated that 17% of the variation in dung beetle richness and abundance was explained by overall mammal abundance and herbivore abundance whereas less than 1 per cent was explained by the variation in these attributes and habitat structure combined (Figure 2). Habitat structure and mammal abundance explained 22% of dung beetle abundance but less than 1% of dung beetle species richness. Spatial distance between sites explained 13% of the assemblage composition (richness and abundance combined), 4% of dung beetle species richness, and 3% of abundance. Half of the variation in dung beetle species richness was explained by mammal composition and spatial distance. Mammals explained 15% of the variation in dung beetle body size, whereas spatial distance explained less than 1%, and both mammals and habitat complexity explained 19%.

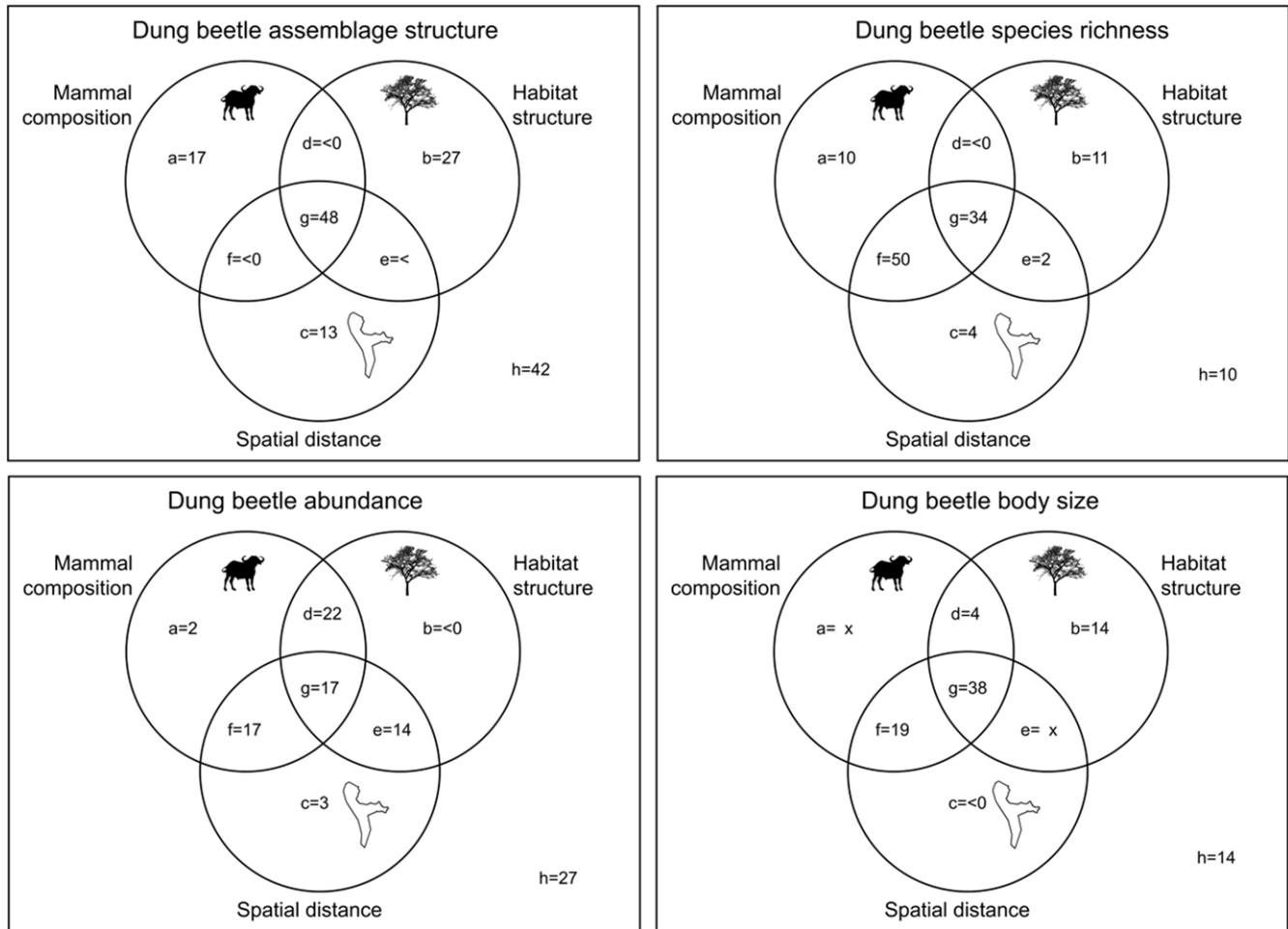


Figure 2. Variation partitioning for eleven sites within Aberdare National Park. Dung beetle assemblage structure, species richness, abundance, and average body size were analysed in relation to the percentage explained by biotic and abiotic predictors. (a) mammals; (b) habitat structure; (c) spatial distance; (d) mammals and habitat complexity; (e) habitat complexity and spatial distance; (f) mammals and habitat complexity; (g) all factors; (h) residuals.

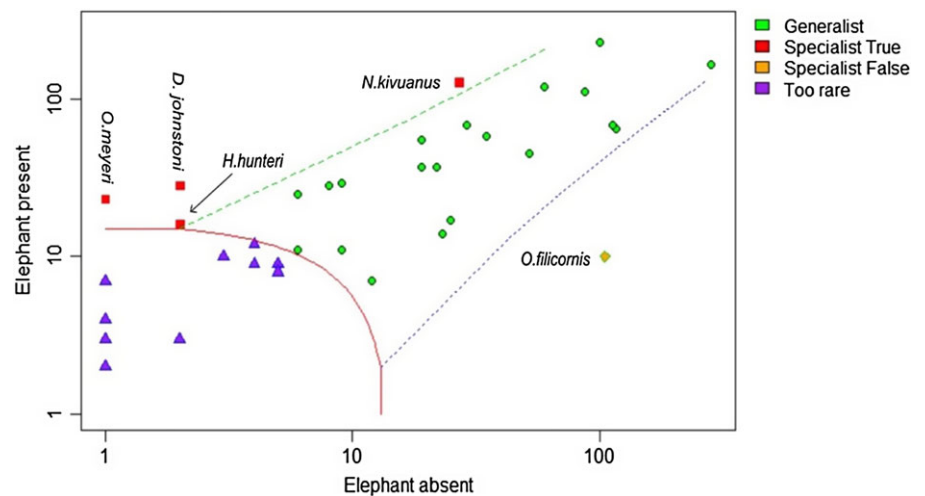


Figure 3. The classification of dung beetle generalists and specialists found where there is high elephant density and where elephant are absent based on Multinomial Species Classification Method (CLAM) analysis. The x and y axes represent the log abundance of dung beetle species in the elephant present and absent samples respectively.

Does elephant abundance affect Afromontane dung beetle assemblages?

A total of 1435 (34 species) of dung beetles were observed in the elephant present (EP) sites compared with 1165 (30 species) in the EA site; 20 out of 34 (58%) of species were shared between the two sites.

Four species, [*Neocolobopterus kivuanus* (Endrödi, 1956)], [*Onitis meyeri* (Kolbe, 1891)], [*Diastelopalpus johnstoni* (Waterhouse, 1885)], and [*Heliocoprion hunteri* (Waterhouse, 1891)], were classified as specific to the sites where elephants were present (Figure 3). Twelve species (35%) were too rare to classify as they did not meet the

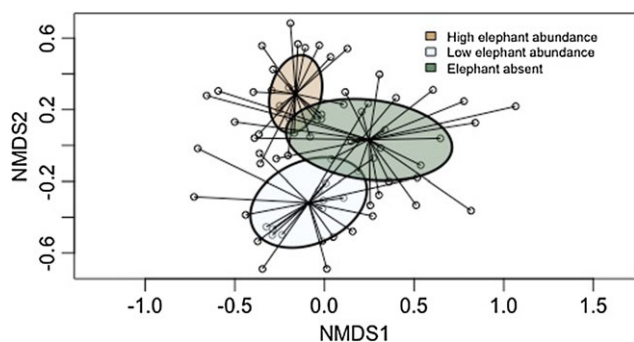


Figure 4. Non-metric multidimensional scaling (NMDS) ordination (stress = 0.19) using the Bray-Curtis distance metric based on dung beetle assemblage composition for the sites with high, low and absent elephant occurrence. Ellipses represent 95% Confidence Interval around the centroid and depict groupings. Circles are the ordinated data points representing individual species and are linked to the centroid of each respective site.

minimum abundance requirements for CLAM analysis. NMDS analysis revealed clear differences in dung beetle assemblage composition (both richness and abundance) between the three sample sites (Figure 4). Stress was low (0.19) indicating a high degree of fit. The distribution pattern of species composition was different for each sample site (ANOSIM $R = 0.38$, $p < 0.01$), revealing a high turnover of species between areas. Twenty-five species were classified as generalists and demonstrated no preference for elephant presence or absence, and a single species [*Onthophagus filicornis* (Harold, 1873)] was considered as a habitat specialist in areas where elephants were absent.

Discussion

Our findings demonstrate that for Afromontane dung beetle species at high elevation, habitat structure is more important than mammal composition in shaping dung beetle assemblages, while species richness is driven by the interactive effect between the spatial distance between sites and mammal composition. Furthermore, we found that mammal composition had a smaller than expected effect on Afromontane dung beetle communities when compared to results from similar studies in the Neotropics (Culot *et al.* 2013). Large mammals are undergoing a heightened risk of extinction that has been brought about by human-associated activities such as poaching, illegal logging, climate change, and habitat fragmentation (Fa and Brown 2009). Large mammals in Africa have lost 59% of their populations in the past 40 years including from within Protected Areas (Craigie *et al.* 2010) and they often singularly represent the apex predator or largest herbivore in an ecosystem a role that is often crucial in structuring communities in ecosystems, which, in many cases, may lack an alternate functional equivalent (Brocardo *et al.* 2013; Jorge *et al.* 2013; Young *et al.* 2015). Therefore, large mammal extirpation or extinction can cause dramatic changes that induce cascading ‘top down’ effects that drive alterations at multiple trophic levels (Eklöf and Ebenman 2006).

Elephant abundance and dung beetle assemblage structure

The results of this study also emphasise the role of large herbivores such as elephants, whose occurrence, even at low densities, has the capacity to shape the structure of dung beetle assemblages. One limitation of using elephant presence and absence data from a

small sample size is the lack of replication between sites, and there are several other factors which may have also influenced the dung beetle assemblage composition such as other soil types (Daniel *et al.* 2021) and the presence or absence of other mammal species. Nevertheless, we found elephant presence had a strong effect on the assemblage composition of dung beetles (Figure 4). Overall, dung beetles were more abundant where elephants were present compared with when elephants were absent. Four dung beetles were indicated as specialists in the site where elephants were in high abundance (Figure 3). Three of the four dung beetle species (*Onitis meyeri*, *Diastellopalpus johnstoni*, and *Heliocopriss hunteri*) are large paracoprids (32 – 48 mm in length), which are capable of constructing nests up to 1 m below the earth surface (Klemperer and Boulton 1976). *Onitis meyeri* is categorised as ‘data deficient’ by the International Union for Conservation of Nature (IUCN) and is described as having a disjunct and restricted distribution limited to the ANP and Mt Kilimanjaro in Tanzania (Davis 2013). The assessment also noted ‘some category of extinction risk would be justified’ if data including ‘dung type... and specialisations’ become available. Our data indicate that *O. meyeri* is an African elephant dung specialist and therefore will be only present in sufficient numbers within East African high-altitude areas where sufficient elephant dung resources remain available. Currently, those areas are limited to four forested locations that have an elevation greater than 2000 m asl and are within the range for elephant as defined by the IUCN; Mount Meru National Park, Tanzania; Mount Elgon National Park, Uganda; the ANP and Mount Kenya NP, Republic of Kenya, and Mt Kilimanjaro National Park, Tanzania. *Diastellopalpus johnstoni* has a distribution which is centred in high-altitude Afromontane vegetation with records from upland locations in both east (Kenya, Tanzania, Rwanda, Burundi), and west Africa (Cameroon, Republic Democratic Congo) (Davis and Scholtz 2020). Its dung preferences are unknown but most other species belonging to the genus are specialists of elephant dung. In the case of large-bodied tunnellers, particularly *Heliocopriss* dung beetle species, the majority of whom rely on elephant dung for breeding (Hanski and Cambefort 1991), the quantity of dung resources required is very large (Gregory *et al.* 2015; Kingston and Coe 1977; Pokorný *et al.* 2009; Stanbrook 2020). *Heliocopriss* dung beetles belong to a genus which had a much larger historic distribution compared to current records. For example, there are recent records for *Heliocopriss* dung beetles in Borneo and Sumatra where remnant populations of elephant still exist, but only fossil evidence of the genus occurs in Japan and South America both regions where megafauna most likely went extinct in the Pleistocene (Davis *et al.* 2002).

Biotic and abiotic drivers of Afromontane dung beetle assemblages

In forests, the biological processes that maintain ecosystem functioning (such as nutrient recycling, pollination, and secondary seed dispersal) are largely driven by insects (Wagner *et al.* 2021). The effects of species loss on the functioning of ecosystems have only recently begun to be widely discussed in the context of functional trait loss *e.g.*, Hillebrand *et al.* (2017), and to date, the effects of functional trait loss in populations have been explored in dung beetle ecology mostly in the context of body size, dung burial, and seed dispersal capability (Nervo *et al.* 2014; Piccini *et al.* 2020; Slade *et al.* 2011). Forest fragmentation-induced changes in abundance and species richness have been shown in many insect

groups, and the modification, fragmentation, and loss of tropical forest habitat are known to lead to high local extinction rates across forest-restricted dung beetle communities (Nichols *et al.* 2007; Noriega *et al.* 2021b).

An abundance of interconnected high-quality habitat is essential for the maintenance of functioning ecosystems and the preservation of the mammals contained within them. Habitat quality directly affects mammal composition and abundance (Burkpile *et al.* 2013; Di Marco *et al.* 2014) in addition to dung beetle assemblage structure (Campos and Hernández 2013; França *et al.* 2017; Nichols *et al.* 2013). Synthesis of species' distribution across elevational gradients has shown that it is difficult to attribute diversity to any one ecological variable (Brown 2001; Gebert *et al.* 2019, 2022). However, a few environmental variables such as decreasing environmental temperature, atmospheric pressure, and biologically relevant gases are closely associated with elevation of all mountains (Lomolino 2001). Body size is an important morphological and functional trait of species (deCastro-Arrazola *et al.* 2023; Nervo *et al.* 2014) as the variation in an organisms' body size can have pivotal consequences for the relationship between biodiversity and ecosystem functioning (Dangles *et al.* 2012; Noriega *et al.* 2023). There are numerous reasons for this; (1) an individual's role reflects its weight-dependent metabolic requirements, so size can be a useful proxy of the impact of a given species (or assemblage) on ecosystem functioning (Reiss *et al.* 2009); (2) species with similar body sizes should overlap in niche use (Kleynhans *et al.* 2011); and (3) large species (Cardillo *et al.* 2005) are particularly vulnerable to many types of environmental alteration; including climate change (Kleynhans *et al.* 2011), habitat fragmentation (Crooks *et al.* 2017), land use changes (Karanth *et al.* 2010; Kiffner *et al.* 2015), or exploitation (Fa and Brown 2009b; Scholte 2011).

The physical structure of habitats can be an important determining factor in the composition and distribution of dung beetle assemblages (Davis and Sutton 1998) with a complete species turnover observed across a natural ecotone spanning as little as 100 m (Spector and Ayzama 2003). Our results align with those of Halfpeter and Arellano (2002) who asserted that it is vegetation cover rather than dung supply that is more important for determining the structure and diversity of a forested dung beetle communities. In Neotropical dung beetle populations, the structure and integrity of forested habitats have been found to be the most important factor in dung beetle species richness (Batilani-Filho and Hernandez 2017; Campos and Hernández 2013; Carpio *et al.* 2009; Gardner *et al.* 2008; Lopes *et al.* 2011) as the structural loss of biomass and reductions in canopy cover negatively affects forest-dependent species (França *et al.* 2017; Slade *et al.* 2011). Illegal logging is one of many factors that drives forest degradation and defaunation in many Afrotropical forests (Poulsen *et al.* 2018) and is responsible for the loss of large-bodied dung beetle species (Edwards *et al.* 2014). Functional loss has already been demonstrated to lead to lower dung removal and seed dispersal rates in Neotropical forests (Braga *et al.* 2013; Noriega *et al.* 2021; Santos-Heredia *et al.*, 2010) but the effects on Afrotropical forests remain largely less well understood. Historically, the ANP has suffered from illegal logging and from livestock incursion (Schmitt 1992). However, since the recent completion of the electric fence, which surrounds the park, only a small fraction of illegal timber extraction now occurs (Butynski 1999; Lambrechts *et al.* 2003; Mungai *et al.* 2011). It is predicted that areas in which Afromontane Forest currently occurs in Kenya are set to decline due to expansion and intensification of agriculture and

deforestation (Eckert *et al.* 2017). Heavily modified habitats with little or no tree canopy cover have been shown to support species-poor dung beetle communities with high species turnover, dramatically reduced abundance and smaller body size compared to species found in intact forest types (Lumaret *et al.* 2020; Nichols *et al.* 2007).

Nichols *et al.* (2013) report that they found no consistent pattern of association between beetle nesting strategy (tunnellers, rollers or dwellers), responses to human presence, or mammal abundance. However, the same study suggests that Neotropical small-bodied beetle species are disproportionately more sensitive to human presence in upland forests; this is supported by (Culot *et al.* 2013) who also reported that negative relationships between mammal abundance and dung beetle species richness were stronger for smaller-bodied beetles in Brazilian Atlantic rainforest. Our results are one of the first to outline the possible effects of mammal decline on Afrotropical montane dung beetles and strongly support the importance of having an abundant and species-rich mammal fauna to provide abundant and diverse dung types. Our results indicate that mammal abundance and the number of herbivores present at each sample site accounted for 15% of the variation in dung beetle body size, compared to the results of a similar study undertaken by Bogoni *et al.* (2016) who found that mammals explained 26% of the variation in dung beetle body size in Atlantic Forest. The difference in variation may be attributable to the higher level of resource specialisation found in African dung beetles (Holter 2016; Tshikae *et al.* 2008) relative to those from the Neotropics (Bogoni *et al.* 2014) with a greater proportion relying on large mammal dung, which is absent from Neotropical forests. This study also described four species of dung beetle that could be considered specialists of elephant dung as they were more abundant in areas with greater elephant presence. Three of the four dung species (*O. meyeri*, *D. johnstoni*, *H. hunteri*) exhibit congruent traits; they are all large-bodied (>30 mm in length), tunnelling dung beetles, and are thought to be nocturnal.

This study is one of very few studies to have assessed the biotic drivers of dung beetle communities in Africa and is one of just three known studies originating from the forested ecosystems found on the continent. Currently, dung beetles in the ANP appear to be abundant but fragile as they depend on a high tree density and a species-rich mammalian fauna, plus the synergy between these parameters acting in concert to ensure continuing dung beetle persistence. Functionally rich dung beetle populations will only continue to persist in upland protected areas in Africa if they contain a mixture of suitable habitat types complete with an abundant and species-rich mammalian fauna. We highlight the importance of protecting suitable forest habitat and a species-rich and abundant mammal community to preserve healthy, speciose, and functionally viable future dung beetle populations.

Supplementary material. The supplementary material for this article can be found at <https://doi.org/10.1017/S0266467425000100>

Data availability statement. The authors confirm that the data supporting the findings of this study are available within the article and/or its supplementary materials.

Acknowledgements. Data were collected with the authorisation of the Kenya Wildlife Service, and we are grateful for the help and protection they provided during our time in the Aberdare National Park. We also thank Laban Njoroge at the National Museums Kenya for the use of their facilities for storage and identification. This research received no specific grant from any funding agency, or commercial or not-for-profit sectors.

Author contributions. Conceptualisation: RS, PW; Analysis: RS; Investigation: RS, MJ, PW; Writing: RS, MJ, PW Supervision: MJ, PW; Project Administration: RS; Revision: all authors.

Competing interests. None.

Ethical standards. All of the work conducted in this article adhered to the standards outlined by the Kenyan National Commission for Science, Technology & Innovation under Research Permit Number NACOSTI/P/15/0573/3206.

References

- Andresen E and Laurance SGW (2007) Possible indirect effects of mammal hunting on dung beetle assemblages in Panama. *Biotropica* **39**(1), 141–146. <https://doi.org/10.1111/j.1744-7429.2006.00239.x>.
- Badenhorst J, Dabrowski J, Scholtz CH and Truter WF (2018) Dung beetle activity improves herbaceous plant growth and soil properties on confinements simulating reclaimed mined land in South Africa. *Applied Soil Ecology* **132**(October 2017), 53–59. <https://doi.org/10.1016/j.apsoil.2018.08.011>.
- Barlow J, Gardner TA, Araujo IS, Ávila-Pires TC, Bonaldo AB, Costa JE, Esposito MC, Ferreira LV, Hawes J, Hernandez MIM, Hoogmoed MS, Leite RN, Lo-Man-Hung NF, Malcolm JR, Martins MB, Mestre LAM, Miranda-Santos R, Nunes-Gutjahr AL, Overal WL, Parry L, Peters SL, Ribeiro MA, Da Silva MNF, Da Silva Motta C and Peres CA (2007) Quantifying the biodiversity value of tropical primary, secondary, and plantation forests. *Proceedings of the National Academy of Sciences of the United States of America* **104**(47), 18555–18560. <https://doi.org/10.1073/pnas.0703333104>.
- Batilani-Filho M and Hernandez MIM (2017) Decline of ecological functions performed by dung beetles in areas of atlantic forest and contribution of rollers and tunnellers in organic matter removal. *Environmental Entomology* **46**(4), 784–793. <https://doi.org/10.1093/ee/nvx091>.
- Blanchet FG, Legendre P and Borcard D (2008) Modelling directional spatial processes in ecological data. *Ecological Modelling* **215**(4), 325–336. <https://doi.org/10.1016/j.ecolmodel.2008.04.001>.
- Bogoni JA, Graipel ME, de Castilho PV, Fantacini FM, Kuhn VV, Luiz MR, Maccarini TB, Marcon CB, de Souza Pimentel Teixeira C, Tortato MA, Vaz-de-Mello FZ and Hernández MIM (2016) Contributions of the mammal assemblage, habitat structure, and spatial distance to dung beetle assemblage structure. *Biodiversity and Conservation* **25**(9), 1661–1675. <https://doi.org/10.1007/s10531-016-1147-1>.
- Bogoni JA, Hernandez MIM and Preisser E (2014) Attractiveness of Native Mammal's feces of different trophic guilds to dung beetles (Coleoptera: Scarabaeinae). *Journal of Insect Science* **14**(1), 299. <https://doi.org/10.1093/ji/esa161>.
- Borcard D and Legendre P (2002) All-scale spatial analysis of ecological data by means of principal coordinates of neighbour matrices. *Ecological Modelling* **153**(1–2), 51–68. [https://doi.org/10.1016/S0304-3800\(01\)00501-4](https://doi.org/10.1016/S0304-3800(01)00501-4).
- Braga RF, Korasaki V, Andresen E and Louzada J (2013) Dung beetle assemblage and functions along a habitat-disturbance gradient in the amazon: a rapid assessment of ecological functions associated to biodiversity. *PLoS ONE* **8**(2), e57786. <https://doi.org/10.1371/journal.pone.0057786>.
- Brocardo CR, Zipparro VB, de Lima R a F, Guevara R and Galetti M (2013) No changes in seedling recruitment when terrestrial mammals are excluded in a partially defaunated Atlantic rainforest. *Biological Conservation* **163**, 107–114. <https://doi.org/10.1016/j.biocon.2013.04.024>.
- Brodie JF, Williams S and Garner B (2021) The decline of mammal functional and evolutionary diversity worldwide. *Proceedings of the National Academy of Sciences of the United States of America* **118**(3), 1921849118. <https://doi.org/10.1073/PNAS.1921849118/-DCSUPPLEMENTAL>.
- Brown JH (2001) Mammals on mountainsides: Elevational patterns of diversity. *Global Ecology and Biogeography* **10**(1), 101–109. <https://doi.org/10.1046/j.1466-822x.2001.00228.x>.
- Burkepile DE, Burns CE, Tambling CJ, Amendola E, Buis GM, Govender N, Nelken V, Thompson DL, Zinn AD and Smith MD (2013) Habitat selection by large herbivores in a southern African savanna: The relative roles of bottom-up and top-down forces. *Ecosphere* **4**(11), 1–19. <https://doi.org/10.1890/ES13-00078.1>.
- Butynski TM (1999) Aberdares National Park and Aberdares Forest Reserves wildlife fence placement study and recommendations. *Unpublished report*.
- Cambefort Y (1982) Les coleopteres Scarabaeidae S. Str. de Lamto (Cote - d'Ivoire): Structure des peuplements et role dans l'écosystem. *Annales de La Societe Entomologique de France* **18**, 433–459.
- Campos RC and Hernández MIM (2013) Dung beetle assemblages (Coleoptera, Scarabaeinae) in Atlantic forest fragments in southern Brazil. *57*(March), 47–54.
- Cardillo M, Mace GM, Gittleman JL, Jones KE, Bielby J and Purvis A (2008) The predictability of extinction: biological and external correlates of decline in mammals. *Proceedings of the Royal Society of London B: Biological Sciences* **275**(1641), 1441–1448.
- Cardillo M, Mace GM, Jones KE, Bielby J, Bininda-Emonds ORP, Sechrest W, Orme CDL and Purvis A (2005) Multiple causes of high extinction risk in large mammal species. *Science (New York, N.Y.)* **309**(5738), 1239–1241. <https://doi.org/10.1126/science.1116030>.
- Cardoso P and Leather SR (2019) Predicting a global insect apocalypse. *Insect Conservation and Diversity* **12**(4), 263–267. <https://doi.org/10.1111/icad.12367>.
- Carpio C, Donoso DA, Ramón G and Dangles O (2009) Short term response of dung beetle communities to disturbance by road construction in the ecuadorian amazon. *Annales de La Societe Entomologique de France* **45**(4), 455–469. <https://doi.org/10.1080/00379271.2009.10697629>.
- Cassano CR, Barlow J and Pardini R (2014) Forest loss or management intensification? Identifying causes of mammal decline in cacao agroforests. *Biological Conservation* **169**, 14–22. <https://doi.org/10.1016/j.biocon.2013.10.006>.
- Chazdon RL, Chao A, Colwell RK, Lin SY, Norden N, Letcher SG, Clark DB, Finegan B and Arroyo JP (2011) A novel statistical method for classifying habitat generalists and specialists. *Ecology* **92**(6), 1332–1343. <https://doi.org/10.1890/1013-1345.1>.
- Chiew LY, Hackett TD, Brodie JF, Teoh SW, Burslem DFRP, Reynolds G, Deere NJ, Vairappan CS and Slade EM (2022) Tropical forest dung beetle–mammal dung interaction networks remain similar across an environmental disturbance gradient. *Journal of Animal Ecology* (June), 1–14. <https://doi.org/10.1111/1365-2656.13655>.
- Coggan N (2012) Are Native Dung Beetle Species Following Mammals in the Critical Weight Range towards Extinction ? *Proceedings of the Linnean Society of New South Wales* **134**(August), 5–9.
- Correa-Cuadros JP, Gómez-Cifuentes A and Noriega JA (2022) Comparative effect of forest cutting and mammal hunting on dung beetle assemblages in Chocó Biogeographic forests in Colombia. *International Journal of Tropical Insect Science* **42**(4), 3045–3055. <https://doi.org/10.1007/s42690-022-00839-x>.
- Craigie ID, Baillie JEM, Balmford A, Carbone C, Collen B, Green RE and Hutton JM (2010) Large mammal population declines in Africa's protected areas. *Biological Conservation* **143**(9), 2221–2228. <https://doi.org/10.1016/j.biocon.2010.06.007>.
- Crooks KR, Burdett CL, Theobald DM, King SRB, Di Marco M, Rondinini C and Boitani L (2017) Quantification of habitat fragmentation reveals extinction risk in terrestrial mammals. *Proceedings of the National Academy of Sciences* **114**(29), 7635–7640. <https://doi.org/10.1073/pnas.1705769114>.
- Culot L, Bovy E, Zagury Vaz-de-Mello F, Guevara R and Galetti M (2013) Selective defaunation affects dung beetle communities in continuous Atlantic rainforest. *Biological Conservation* **163**, 79–89. <https://doi.org/10.1016/j.biocon.2013.04.004>.
- Dangles O, Carpio C and Woodward G (2012) Size-dependent species removal impairs ecosystem functioning in a large-scale tropical field experiment. *Ecology* **93**(12), 2615–2625. <https://doi.org/10.1890/12-0510.1>.
- Daniel GM, Noriega JA, da Silva PG, Deschodt CM, Sole CL, Scholtz CH and Davis ALV (2021) Soil type, vegetation cover and temperature determinants of the diversity and structure of dung beetle assemblages in a South African open woodland and closed canopy mosaic. *Austral Ecology* **47**, 79–91. <https://doi.org/10.1111/aec.13138>.
- Davis AJ and Sutton SL (1998) The effects of rainforest canopy loss on arboreal; dung beetles in Borneo: implications for the measurement of biodiversity in derived tropical ecosystems. *Diversity and Distributions* **4**, 167–173.

- Davis ALV (2013) *Onitis meyeri*. The IUCN Red List of Threatened Species 2013: e.T137608A527833. <https://doi.org/10.2305/IUCN.UK.2013-2.RLTS.T137608A527833.en>. Accessed on 03 April 2024.
- Davis ALV and Scholtz CH (2020) Dung beetle conservation biogeography in southern Africa: current challenges and potential effects of climatic change. *Biodiversity and Conservation* 29(3), 667–693. <https://doi.org/10.1007/s10531-019-01904-7>.
- Davis ALV, Scholtz CH and Philips TK (2002) Historical biogeography of scarabaeine dung beetles. *Journal of Biogeography* 29(9), 1217–1256. <https://doi.org/10.1046/j.1365-2699.2002.00776.x>.
- deCastro-Arrazola I, Andrew NR, Berg MP, Curtsdotter A, Lumaret J-P, Menéndez R, Moretti M, Nervo B, Nichols ES, Sánchez-Piñero F, Santos AMC, Sheldon KS, Slade EM and Hortal J (2023) A trait-based framework for dung beetle functional ecology. *Journal of Animal Ecology* 92(1), 44–65. <https://doi.org/10.1111/1365-2656.13829>.
- Di Marco M, Buchanan GM, Szantoi Z, Holmgren M, Grottolo Marasini G, Gross D, Tranquilli S, Boitani L and Rondinini C (2014) Drivers of extinction risk in African mammals: the interplay of distribution state, human pressure, conservation response and species biology. *Philosophical Transactions of the Royal Society B: Biological Sciences* 369(1643), 20130198–20130198. <https://doi.org/10.1098/rstb.2013.0198>.
- Dobson A (2009) Food-web structure and ecosystem services: insights from the Serengeti. *Philosophical Transactions of the Royal Society B: Biological Sciences* 364(1524), 1665–1682. <https://doi.org/10.1098/rstb.2008.0287>.
- Dray S, Legendre P and Peres-Neto PR (2006) Spatial modelling: a comprehensive framework for principal coordinate analysis of neighbour matrices (PCNM). *Ecological Modelling* 196(3–4), 483–493. <https://doi.org/10.1016/j.ecolmodel.2006.02.015>.
- Duffy JE, Cardinale BJ, France KE, McIntyre PB, Thébault E and Loreau M (2007) The functional role of biodiversity in ecosystems: Incorporating trophic complexity. *Ecology Letters* 10(6), 522–538. <https://doi.org/10.1111/j.1461-0248.2007.01037.x>.
- Eckert S, Kiteme B, Njuguna E and Zaehring JG (2017) Agricultural expansion and intensification in the foothills of Mount Kenya: a landscape perspective. *Remote Sensing* 9(8), 1–20. <https://doi.org/10.3390/rs9080784>.
- Edwards F, Edwards DP, Sloan S and Hamer KC (2014) Sustainable management in crop monocultures: the impact of retaining forest on oil palm yield. *PloS One* 9(3), e91695. <https://doi.org/10.1371/journal.pone.0091695>.
- Eklöf A and Ebenman B (2006) Species loss and secondary extinctions in simple and complex model communities. *Journal of Animal Ecology* 75(1), 239–246. <https://doi.org/10.1111/j.1365-2656.2006.01041.x>.
- Fa J and Brown D (2009) Impacts of hunting on mammals in African tropical moist forests: a review and synthesis. *Mammal Review* 39(4), 231–264. <https://doi.org/10.1111/j.1365-2907.2009.00149.x>.
- Faurby S and Svenning JC (2015) Historic and prehistoric human-driven extinctions have reshaped global mammal diversity patterns. *Diversity and Distributions* 21(10), 1155–1166. <https://doi.org/10.1111/ddi.12369>.
- Fleming PA, Anderson H, Prendergast AS, Bretz MR, Valentine LE and Hardy GESTJ (2014) Is the loss of Australian digging mammals contributing to a deterioration in ecosystem function? *Mammal Review* 44(2), 94–108. <https://doi.org/10.1111/mam.12014>.
- França FM, Frazão FS, Korasaki V, Louzada J and Barlow J (2017) Identifying thresholds of logging intensity on dung beetle communities to improve the sustainable management of Amazonian tropical forests. *Biological Conservation* 216, 115–122. <https://doi.org/10.1016/j.biocon.2017.10.014>.
- Frank K, Krell FT, Slade EM, Raine EH, Chiew LY, Schmitt T, Vairappan CS, Walter P and Blüthgen N (2018) Global dung webs: high trophic generalism of dung beetles along the latitudinal diversity gradient. *Ecology Letters* 21(8), 1229–1236. <https://doi.org/10.1111/ele.13095>.
- Fuzessy LF, Benítez-López A, Slade EM, Bufalo FS, Magro-de-Souza GC, Pereira LA and Culot L (2021) Identifying the anthropogenic drivers of declines in tropical dung beetle communities and functions. *Biological Conservation* 256, 109063. <https://doi.org/10.1016/j.biocon.2021.109063>.
- Galetti M and Dirzo R (2013) Ecological and evolutionary consequences of living in a defaunated world. *Biological Conservation* 163, 1–6. <https://doi.org/10.1016/j.biocon.2013.04.020>.
- Gardner TA, Hernández MIM, Barlow J and Peres CA (2008) Understanding the biodiversity consequences of habitat change: The value of secondary and plantation forests for neotropical dung beetles. *Journal of Applied Ecology* 45(3), 883–893. <https://doi.org/10.1111/j.1365-2664.2008.01454.x>.
- Gebert F, Njovu HK, Treydte AC, Steffan-Dewenter I and Peters MK (2019) Primary productivity and habitat protection predict elevational species richness and assemblage biomass of large mammals on Mt. Kilimanjaro. *Journal of Animal Ecology* 88(12), 1860–1872. <https://doi.org/10.1111/1365-2656.13074>.
- Gebert F, Steffan-Dewenter I, Kronbach P and Peters MK (2022) The role of diversity, body size and climate in dung removal: a correlative and experimental approach. *Journal of Animal Ecology* 91(11), 2181–2191. <https://doi.org/10.1111/1365-2656.13798>.
- Gregory N, Gómez A, Oliveira TMF de S and Nichols E (2015) Big dung beetles dig deeper: Trait-based consequences for faecal parasite transmission. *International Journal for Parasitology* 45(2–3), 101–105. <https://doi.org/10.1016/j.ijpara.2014.10.006>.
- Halffter G and Arellano L (2002) Response of dung beetle diversity to human-induced changes in a tropical landscape. *Biotropica* 34(1), 144–154. <https://doi.org/10.1111/j.1744-7429.2002.tb00250.x>.
- Hallmann CA, Sorg M, Jongejans E, Siepel H, Hofland N, Schwan H, Stenmans W, Müller A, Sumser H, Hörner T, Goulson D and De Kroon H (2017) More than 75 percent decline over 27 years in total flying insect biomass in protected areas. *PLoS ONE* 12(10), e0185809. <https://doi.org/10.1371/journal.pone.0185809>.
- Hanski I and Cambefort Y (1991) *Dung Beetle Ecology*. Princeton University Press.
- Harris G, Thirgood S, Hopcraft JGC, Crooms JPM and Berger J (2009) Global decline in aggregated migrations of large terrestrial mammals. *Endangered Species Research* 7(1), 55–76. <https://doi.org/10.3354/esr00173>.
- Hillebrand H, Blasius B, Borer ET, Chase JM, Downing JA, Eriksson BK, Filstrup CT, Harpole WS, Hodapp D, Larsen S, Lewandowska AM, Seabloom EW, Van de Waal DB and Ryabov AB (2017) Biodiversity change is uncoupled from species richness trends: Consequences for conservation and monitoring. *Journal of Applied Ecology* 55, 169–184. <https://doi.org/10.1111/1365-2664.12959>.
- Holter P (2016) Herbivore dung as food for dung beetles: elementary coprology for entomologists. *Ecological Entomology* 41(4), 367–377. <https://doi.org/10.1111/een.12316>.
- Jorge MLSP, Galetti M, Ribeiro MC and Ferraz KMPMB (2013) Mammal defaunation as surrogate of trophic cascades in a biodiversity hotspot. *Biological Conservation* 163, 49–57. <https://doi.org/10.1016/j.biocon.2013.04.018>.
- Karanth KK, Nichols JD, Karanth KU, Hines JE and Christensen NL (2010) The shrinking ark: patterns of large mammal extinctions in India. *Proceedings of the Royal Society B: Biological Sciences* 277(1690), 1971–1979. <https://doi.org/10.1098/rspb.2010.0171>.
- Kiffner C, Wenner C, Laviolet A, Yeh K and Kioko J (2015) From savannah to farmland: Effects of land-use on mammal communities in the Tarangire-Manyara ecosystem, Tanzania. *African Journal of Ecology* 53(2), 156–166. <https://doi.org/10.1111/aje.12160>.
- Kingdon J (2015) *The Kingdon Field Guide to African Mammals*, Second Edition. Princeton University Press.
- Kingston TJ and Coe M (1977) The biology of a giant dungbeetle (*Heliocopris dilloni*) (Coleoptera: Scarabaeidae). *Journal of Zoology* 181(2), 243–263. <https://doi.org/10.1111/j.1469-7998.1977.tb03239.x>.
- Kipkoeh S, Melly DK, Muema BW, Wei N, Kamau P, Kirika PM, Wang Q and Hu G (2020) An annotated checklist of the vascular plants of Aberdare Ranges forest, a part of Eastern Afrotropical biodiversity hotspot. *PhytoKeys* 149, 1–88. <https://doi.org/10.3897/PHYTOKEYS.149.48042>.
- Kirkpatrick WH and Sheldon KS (2022) Experimental increases in temperature mean and variance alter reproductive behaviours in the dung beetle *Phanaeus vindex*. *Biological Letters* 18(7), 20220109. <https://doi.org/10.1098/rsbl.2022.0109>.
- Klemperer HG and Boulton R (1976) Brood burrow construction and brood care by *Heliocopris japeus* (Klug) and *Heliocopris hamadryas* (Fabricius) (Coleoptera, Scarabaeidae). *Ecological Entomology* 1(1), 19–29. <https://doi.org/10.1111/j.1365-2311.1976.tb01201.x>.
- Kleynhans EJ, Jolles AE, Bos MRE and Olff H (2011) Resource partitioning along multiple niche dimensions in differently sized African savanna grazers. *Oikos* 120(4), 591–600. <https://doi.org/10.1111/j.1600-0706.2010.18712.x>.

- Krell FT and Krell-Westerwalbesloh S (2024) One elephant may sustain 2 million dung beetles in East African savannas on any given day. *The Science of Nature* 111:5, 1–8. <https://doi.org/10.1007/s00114-024-01894-9>.
- Lambrechts C, Woodley B, Church C and Gachanja M (2003) Aerial survey of the destruction of the Aberdare Range forests.
- Lee-Yaw J, L. McCune J, Pironon S and N. Sheth S (2022) Species distribution models rarely predict the biology of real populations. *Ecography* 2022(6), e05877. <https://doi.org/10.1111/ecog.05877>.
- Legendre P and Legendre L (1998) *Numerical Ecology*. Elsevier.
- Legendre P and Legendre L (2012) Multiscale analysis: Spatial eigenfunctions. *Developments in Environmental Modelling* 24(C), 859–906. <https://doi.org/10.1016/B978-0-444-53868-0.50014-9>.
- Lomolino MV (2001) Elevation gradients of species-density: historical and prospective views. *Global Ecology and Biogeography* 10(1), 3–13.
- Lopes J, Korasaki V, Catelli LL, Marçal VVM and Nunes MPBP (2011) A comparison of dung beetle assemblage structure (Coleoptera: Scarabaeidae: Scarabaeinae) between an Atlantic forest fragment and adjacent abandoned pasture in Paraná, Brazil. *Zoologia* 28(1), 72–79. <https://doi.org/10.1590/S1984-46702011000100011>.
- López-Bedoya PA, Bohada-Murillo M, Ángel-Vallejo MC, Audino LD, Davis ALV, Gurr G and Noriega JA (2022) Primary forest loss and degradation reduces biodiversity and ecosystem functioning: A global meta-analysis using dung beetles as an indicator taxon. *Journal of Applied Ecology* 59(6), 1572–1585. <https://doi.org/10.1111/1365-2664.14167>.
- Lumaret J-P, Kadiri N and Martínez-M I (2020) The Global Decline of Dung Beetles. Reference Module in Earth Systems and Environmental Sciences 1–10. <https://doi.org/10.1016/b978-0-12-821139-7.00018-0>.
- Massey AL, King AA and Foufopoulos J (2014) Fencing protected areas: a long-term assessment of the effects of reserve establishment and fencing on African mammalian diversity. *Biological Conservation* 176, 162–171. <https://doi.org/10.1016/j.biocon.2014.05.023>.
- Morrison J, Higginbottom TP, Symeonakis E, Jones MJ, Omengo F, Walker SL and Cain B (2018) Detecting vegetation change in response to confining elephants in forests using MODIS time-series and BFAST. *Remote Sensing* 10(7), 1075. <https://doi.org/10.3390/rs10071075>.
- Morrison J, Omengo F, Jones M, Symeonakis E, Walker SL and Cain B (2022) Estimating elephant density using motion-sensitive cameras: challenges, opportunities, and parameters for consideration. *Journal of Wildlife Management* 86(4), 1–14. <https://doi.org/10.1002/jwmg.22203>.
- Mungai D, Thuita T and Alfred M (2011) *Environmental, social and economic assessment of the fencing of the Aberdare Conservation Area*.
- Nependa HUJ, Pryke JS and Roets F (2021) Replacing native mammal assemblages with livestock in African savannahs, impacts dung beetle diversity and reduces body size. *Biological Conservation* 260(May), 109211. <https://doi.org/10.1016/j.biocon.2021.109211>.
- Nervo B, Tocco C, Caprio E, Palestini C and Rolando A (2014) The effects of body mass on dung removal efficiency in dung beetles. *PLoS ONE* 9(9), e107699. <https://doi.org/10.1371/journal.pone.0107699>.
- Nichols E, Gardner TA, Peres CA and Spector S (2009) Co-declining mammals and dung beetles: an impending ecological cascade. *Oikos* 118(4), 481–487. <https://doi.org/10.1111/j.1600-0706.2008.17268.x>.
- Nichols E, Larsen T, Spector S, Davis AL, Escobar F, Favila M and Vulinec K (2007) Global dung beetle response to tropical forest modification and fragmentation: a quantitative literature review and meta-analysis. *Biological Conservation* 137(1), 1–19. <https://doi.org/10.1016/j.biocon.2007.01.023>.
- Nichols E, Spector S, Louzada J, Larsen T, Amezcua S and Favila ME (2008) Ecological functions and ecosystem services provided by Scarabaeinae dung beetles. *Biological Conservation* 141(6), 1461–1474. <https://doi.org/10.1016/j.biocon.2008.04.011>.
- Nichols E, Uriarte M, Peres C a., Louzada J, Braga RF, Schiffler G, Endo W and Spector SH (2013) Human-Induced Trophic Cascades along the Fecal Detritus Pathway. *PLoS ONE* 8(10), e75819. <https://doi.org/10.1371/journal.pone.0075819>.
- Noriega JA, Santos AMC, Calatayud J, Chozas S and Hortal J (2021) Short- and long-term temporal changes in the assemblage structure of Amazonian dung beetles. *Oecologia* 195(3), 719–736. <https://doi.org/10.1007/s00442-020-04831-5>.
- Noriega JA, Hortal J, deCastro-Arrazola I, Alves-Martins F, Ortega JCG, Bini LM, Andrew NR, Arellano L, Beynon S, Davis ALV, Favila ME, Floate KD, Horgan FG, Menéndez R, Milotic T, Nervo B, Palestini C, Rolando A, Scholtz CH, Senyüz Y, Wassmer T, Adam R, Araújo CDO, Barragan-Ramírez JL, Boros G, Camero-Rubio E, Cruz M, Cuesta E, Damborsky MP, Deschodt CM, Rajan PD, D'hondt B, Díaz Rojas A, Dindar K, Escobar F, Espinoza VR, Ferrer-Paris JR, Gutiérrez Rojas PE, Hemmings Z, Hernández B, Hill SJ, Hoffmann M, Jay-Robert P, Lewis K, Lewis M, Lozano C, Marín-Armijos D, De Farias PM, Murcia-Ordoñez B, Karimbumkara SN, Navarrete-Heredia JL, Ortega-Echeverría C, Pablo-Cea JD, Perrin W, Pessoa MB, Radhakrishnan A, Rahimi I, Raimundo AT, Ramos DC, Rebolledo RE, Roggero A, Sánchez-Mercado A, Somay L, Stadler J, Tahmasebi P, Triana Céspedes JD and Santos AMC (2023) Dung removal increases under higher dung beetle functional diversity regardless of grazing intensification. *Nature Communications* 14(1), 8070. <https://doi.org/10.1038/s41467-023-43760-8>.
- Ogutu JO, Owen-Smith N, Piepho HP and Said MY (2011) Continuing wildlife population declines and range contraction in the Mara region of Kenya during 1977–2009. *Journal of Zoology* 285(2), 99–109. <https://doi.org/10.1111/j.1469-7998.2011.00818.x>.
- Patton F and Jones M (2007) Determining minimum population size and demographics of black rhinos in the Salient of Aberdare National Park, Kenya. *Pachyderm* 43(43), 63–72.
- Pekor A, Miller JRB, Flyman MV, Kasiki S, Kesch MK, Miller SM, Uiseb K, van der Merve V and Lindsey PA (2019) Fencing Africa's protected areas: Costs, benefits, and management issues. *Biological Conservation* 229(October 2018), 67–75. <https://doi.org/10.1016/j.biocon.2018.10.030>.
- Piccini I, Armeri F, Caprio E, Nervo B, Pelissetti S, Palestini C, Roslin T and Rolando A (2017) Greenhouse gas emissions from dung pats vary with dung beetle species and with assemblage composition. *PLoS ONE* 12(7), 1–15. <https://doi.org/10.1371/journal.pone.0178077>.
- Piccini I, Caprio E, Palestini C and Rolando A (2020) Ecosystem functioning in relation to species identity, density, and biomass in two tunneller dung beetles. *Ecological Entomology* 45(2), 311–320. <https://doi.org/10.1111/een.12802>.
- Piccini I, Nervo B, Forshage M, Celi L, Palestini C, Rolando A and Roslin T (2018) Dung beetles as drivers of ecosystem multifunctionality: Are response and effect traits interwoven? *Science of the Total Environment* 616–617, 1440–1448. <https://doi.org/10.1016/j.scitotenv.2017.10.171>.
- Pokorný S, Zidek J and Werner K (2009) *Giant Dung Beetles of the Genus Heliocopris*. Hradec Králové, Czech Republic: Taita Publishers.
- Poulsen JR, Rosin C, Meier A, Mills E, Nuñez CL, Koerner SE, Blanchard E, Callejas J, Moore S and Sowers M (2018) Ecological consequences of forest elephant declines for Afrotropical forests. *Conservation Biology* 32(3), 559–567. <https://doi.org/10.1111/cobi.13035>.
- Pryke JS, Roets Francois and Samways MJ (2022) Large African herbivore diversity is essential in transformed landscapes for conserving dung beetle diversity. *Journal of Applied Ecology* 59(5), 1372–1382. <https://doi.org/10.1111/1365-2664.14152>.
- Quinn JE, Awada T, Trindade F, Fulginiti L and Perrin R (2017) Combining habitat loss and agricultural intensification improves our understanding of drivers of change in avian abundance in a North American cropland anthrome. *Ecology and Evolution* 7(3), 803–814. <https://doi.org/10.1002/ece3.2670>.
- Raine EH and Slade EM (2019) Dung beetle-mammal associations: Methods, research trends and future directions. *Proceedings of the Royal Society B: Biological Sciences* 286, 20182002. <https://doi.org/10.1098/rspb.2018.2002>.
- Reiss J, Bridle JR, Montoya JM and Woodward G (2009) Emerging horizons in biodiversity and ecosystem functioning research. *Trends in Ecology and Evolution* 24(9), 505–514. <https://doi.org/10.1016/j.tree.2009.03.018>.
- Santos-Heredia C, Andresen E and Zrate DA (2010) Secondary seed dispersal by dung beetles in a Colombian rain forest: Effects of dung type and defecation pattern on seed fate. *Journal of Tropical Ecology* 26(4), 355–364. <https://doi.org/10.1017/S0266467410000192>.

- Schmitt K** (1992) *Anthropo-Zoogenic Impact on the Structure and Regeneration of a Submontane Forest in Kenya BT In Tropical Forests in Transition: Ecology of Natural and Anthropogenic Disturbance Processes*. Goldammer JG (ed). Basel: Birkhäuser Basel, 105–126. https://doi.org/10.1007/978-3-0348-7256-0_7.
- Sillero-Zubiri C and Gottelli D** (1991) Threats to Aberdare Rhinos: Predation versus Poaching. *Pachyderm* (14). (accessed 24 January 2022)
- Slade EM, Mann DJ and Lewis OT** (2011) Biodiversity and ecosystem function of tropical forest dung beetles under contrasting logging regimes. *Biological Conservation* **144**(1), 166–174. <https://doi.org/10.1016/j.biocon.2010.08.011>.
- Spector S and Ayzama S** (2003) Rapid turnover and edge effects in dung beetle assemblages (Scarabaeidae) at a Bolivian neotropical forest-savanna ecotone. *Biotropica* **35**(3), 394–404. <https://doi.org/10.1111/j.1744-7429.2003.tb00593.x>.
- Stanbrook R** (2020) Dung relocation behavior in three sympatric African *Heliocopris* dung beetle species (Coleoptera: Scarabaeidae: Scarabaeinae). *The Coleopterists Bulletin* **74**(4), 1–3.
- Stanbrook R and King JR** (2022) Dung beetle community composition affects dung turnover in subtropical US grasslands. *Ecology and Evolution* **12**(2), e8660. <https://doi.org/10.1002/ece3.8660>.
- Stanbrook R, Norrey J, Kisingo AW and Jones M** (2021a) Dung beetle diversity and community composition along a land use gradient in a Savannah Ecosystem of Northwestern Tanzania. *Tropical Conservation Science* **0**, 1–15. <https://doi.org/10.1177/19400829211008756>.
- Stanbrook R, Wheeler CP, Harris WE and Jones M** (2021b) Habitat type and altitude work in tandem to drive the community structure of dung beetles in Afromontane Forest. *Journal of Insect Conservation* **25**(1), 159–173. <https://doi.org/10.1007/s10841-020-00289-1>.
- Stanbrook RA, Harris WE, Wheeler CP and Jones M** (2021) Evidence of phenotypic plasticity along an altitudinal gradient in the dung beetle *Onthophagus proteus*. *Peer J* 1–15. <https://doi.org/10.7717/peerj.10798>.
- Tovar HL, Correa CMA, Lumaret J-P, López-Bedoya PA, Navarro B, Tovar V and Noriega JA** (2023) Effect of antiparasitic management of cattle on the diversity and functional structure of dung beetle (Coleoptera: Scarabaeidae) Assemblages in the Colombian Caribbean. *Diversity* **15**(4), 555. <https://doi.org/10.3390/d15040555>.
- Tshikae BP, Davis ALV and Scholtz CH** (2008) Trophic associations of a dung beetle assemblage (Scarabaeidae: Scarabaeinae) in a woodland savanna of Botswana. *Environmental Entomology* **37**(2), 431–441. [https://doi.org/10.1603/0046-225X\(2008\)37\[431:TAOADB\]2.0.CO;2](https://doi.org/10.1603/0046-225X(2008)37[431:TAOADB]2.0.CO;2).
- Wagner DL** (2020) Insect declines in the anthropocene. *Annual Review of Entomology* **65**, 457–480. <https://doi.org/10.1146/annurev-ento-011019-025151>.
- Wagner DL, Grames EM, Forister ML, Berenbaum MR and Stopak D** (2021) Insect decline in the Anthropocene: Death by a thousand cuts. *Proceedings of the National Academy of Sciences of the United States of America* **118**(2), 1–10. <https://doi.org/10.1073/PNAS.2023989118>.
- Young HS, Mccauley DJ, Dirzo R and Goheen JR** (2015) Context-dependent effects of large wildlife declines on small mammal communities in central Kenya. *Ecological Society of America* **25**(2), 348–360.